







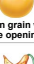
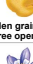
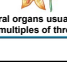
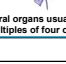
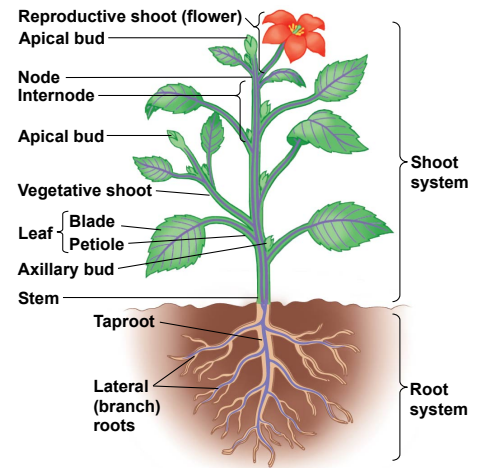


	Monocots	Eudicots
Embryos	 One cotyledon	 Two cotyledons
Leaf venation	 Veins usually parallel	 Veins usually netlike
Stems	 Vascular tissue scattered	 Vascular tissue usually arranged in ring
Roots	 Root system usually fibrous (no main root)	 Taproot (main root) usually present
Pollen	 Pollen grain with one opening	 Pollen grain with three openings
Flowers	 Floral organs usually in multiples of three	 Floral organs usually in multiples of four or five

© 2014 Pearson Education, Inc.

1



© 2014 Pearson Education, Inc.

2

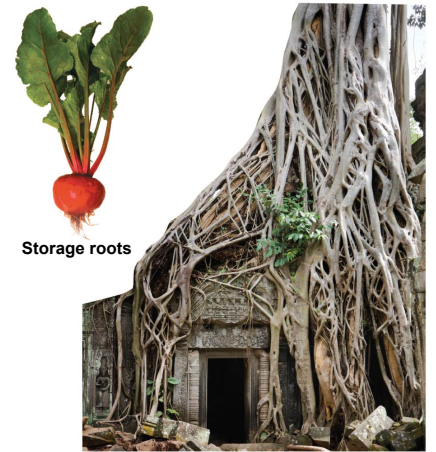


© 2014 Pearson Education, Inc.

3



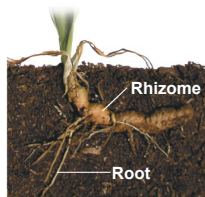
Pneumatophores



"Strangling" aerial roots

© 2014 Pearson Education, Inc.

4



Rhizomes



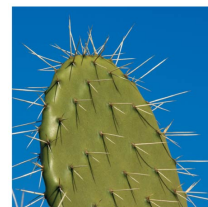
Stolons



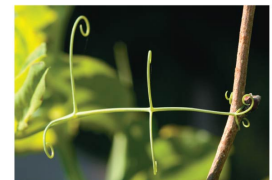
Tubers

© 2014 Pearson Education, Inc.

5



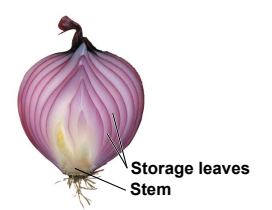
Spines



Tendrils



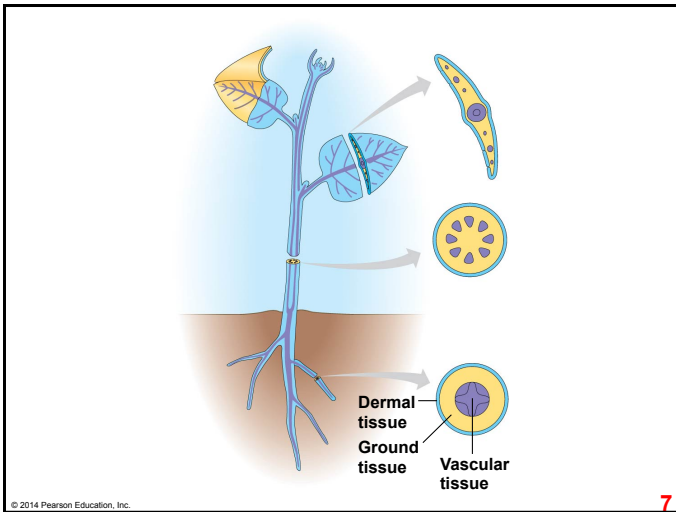
Reproductive leaves



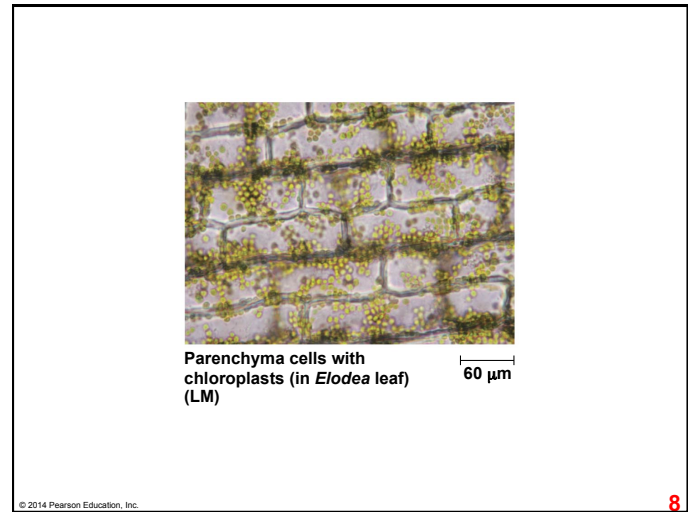
Storage leaves

© 2014 Pearson Education, Inc.

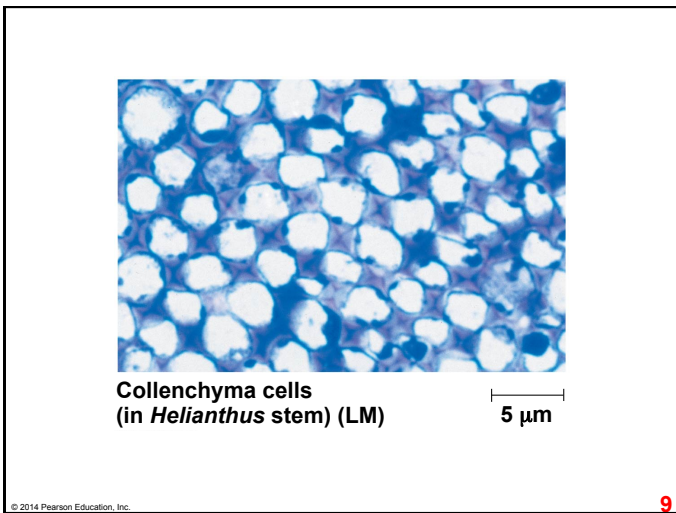
6



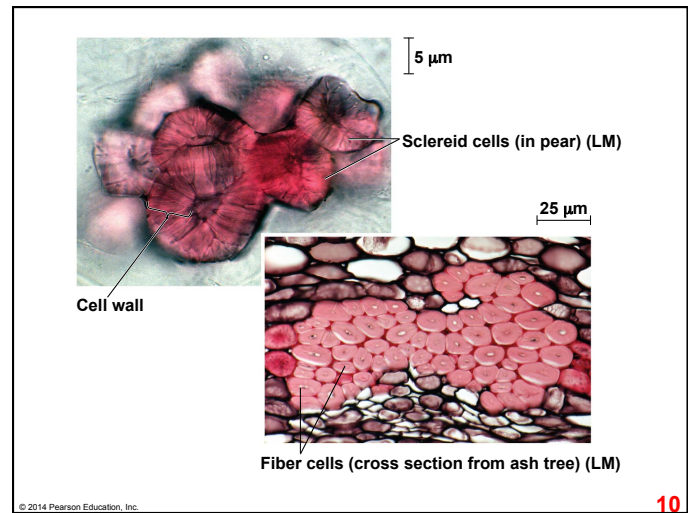
7



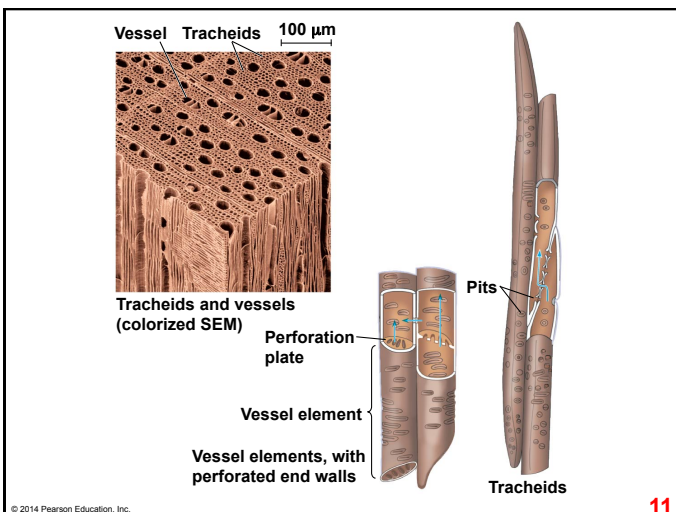
8



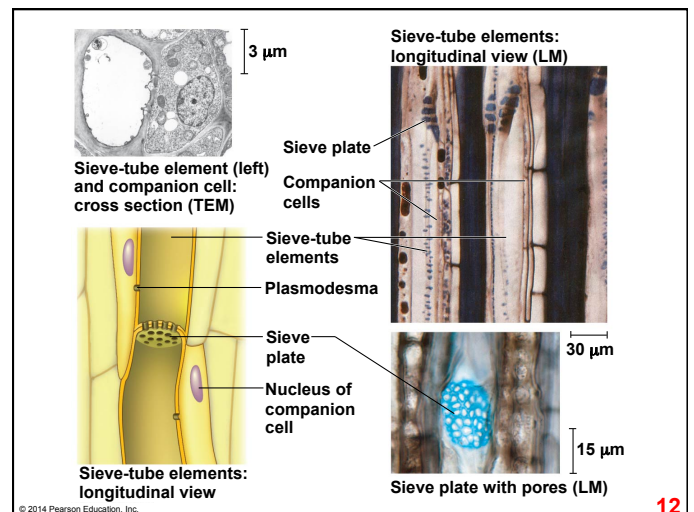
9



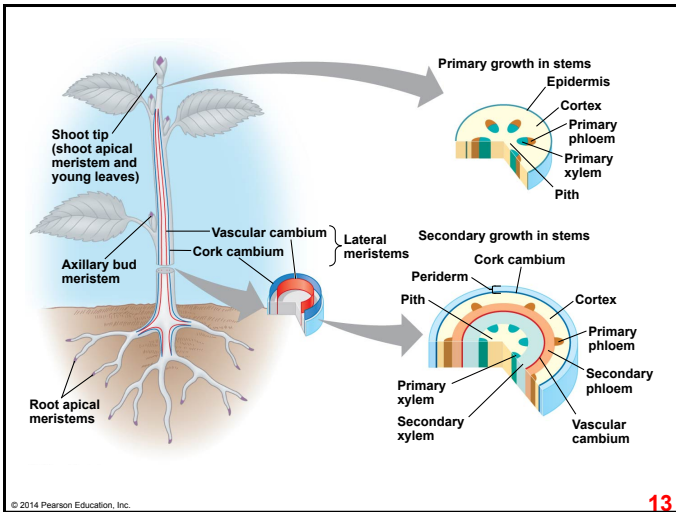
10



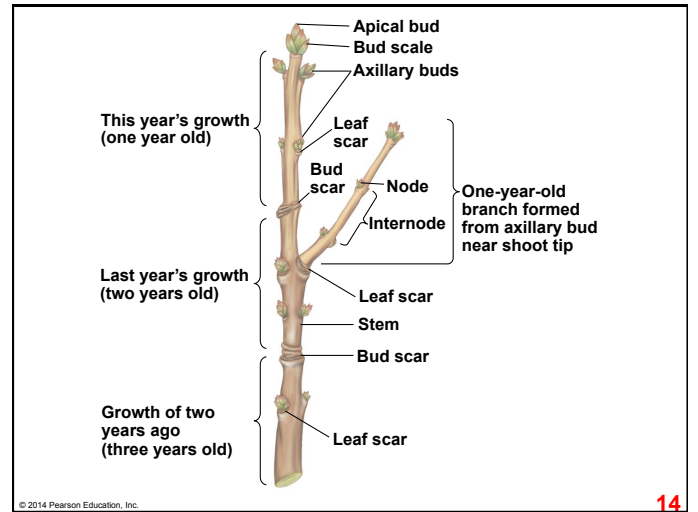
11



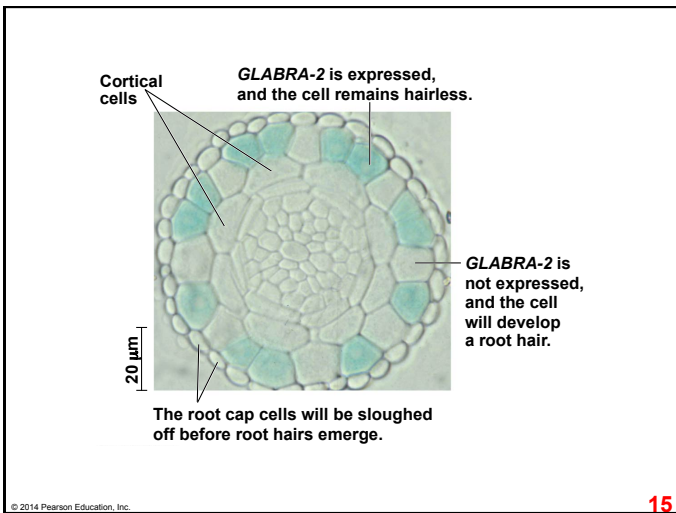
12



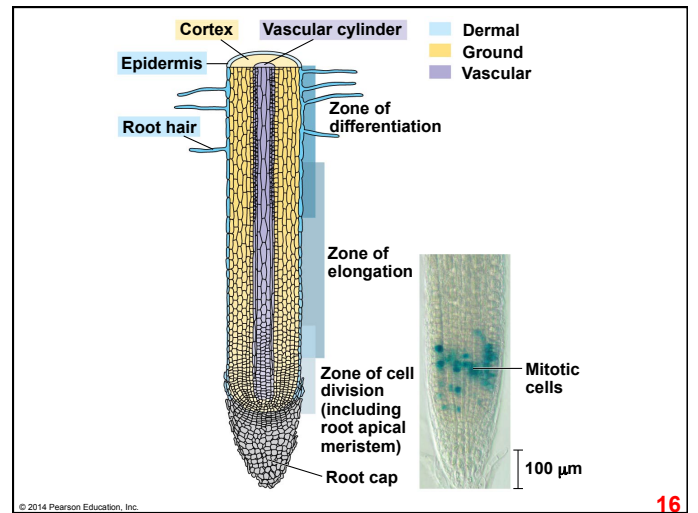
13



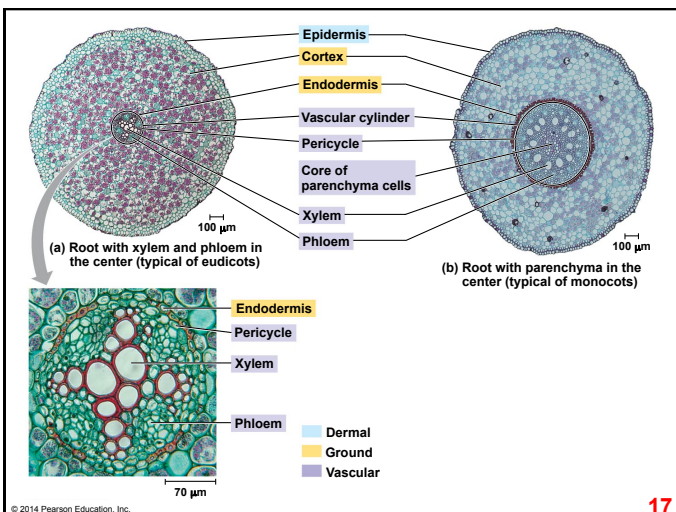
14



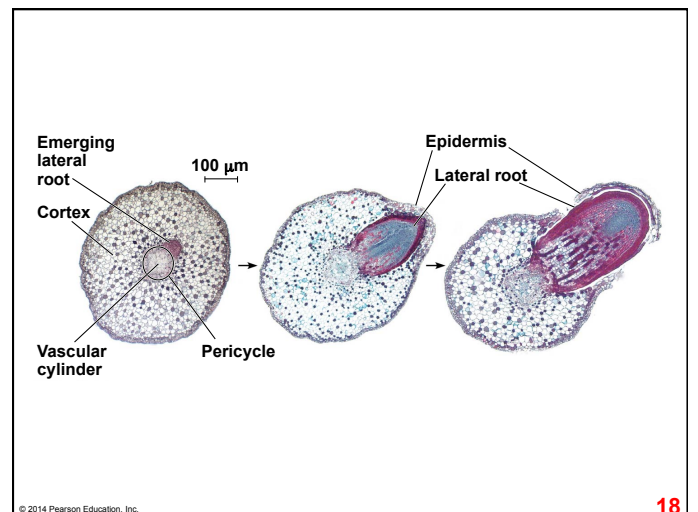
15



16



17



18

