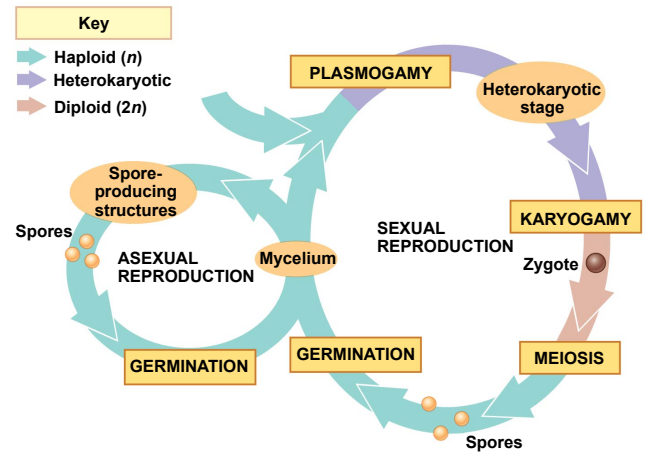


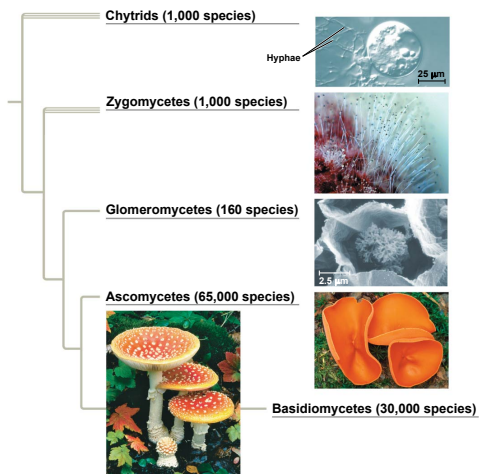
© 2014 Pearson Education, Inc.

7



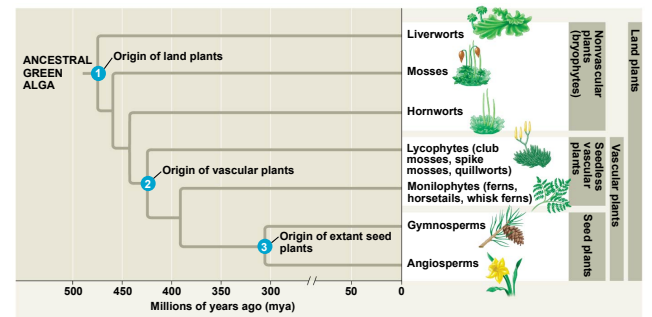
© 2014 Pearson Education, Inc.

8



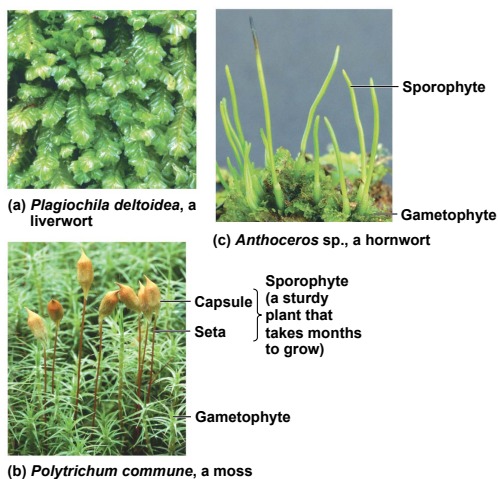
© 2014 Pearson Education, Inc.

9



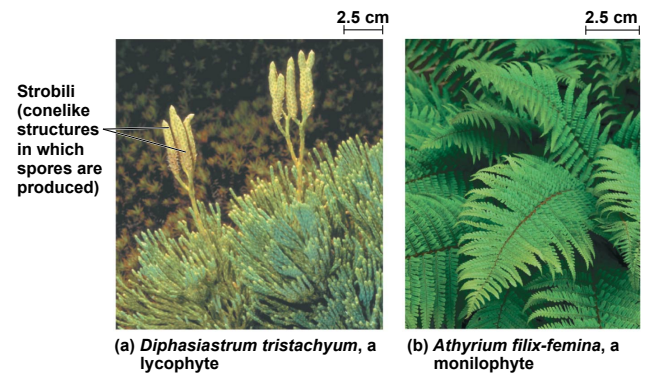
© 2014 Pearson Education, Inc.

10



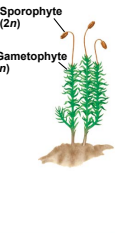

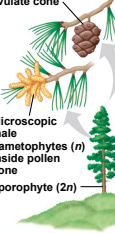
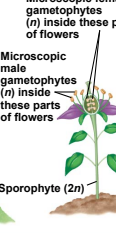
© 2014 Pearson Education, Inc.

11



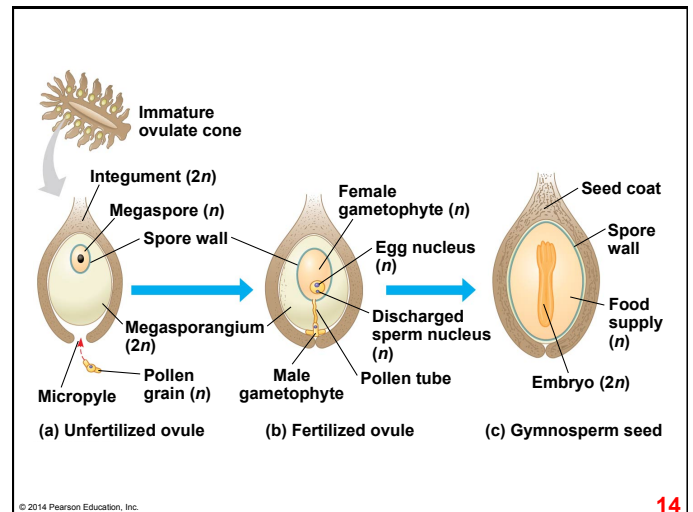
© 2014 Pearson Education, Inc.

12

	PLANT GROUP		
	Mosses and other nonvascular plants	Ferns and other seedless vascular plants	Seed plants (gymnosperms and angiosperms)
Gametophyte	Dominant	Reduced, independent (photosynthetic and free-living)	Reduced (usually microscopic), dependent on surrounding sporophyte tissue for nutrition
Sporophyte	Reduced, dependent on gametophyte for nutrition	Dominant	Dominant
Example			<div style="display: flex; justify-content: space-around;"> <div style="text-align: center;"> <p>Gymnosperm</p>  </div> <div style="text-align: center;"> <p>Angiosperm</p>  </div> </div>

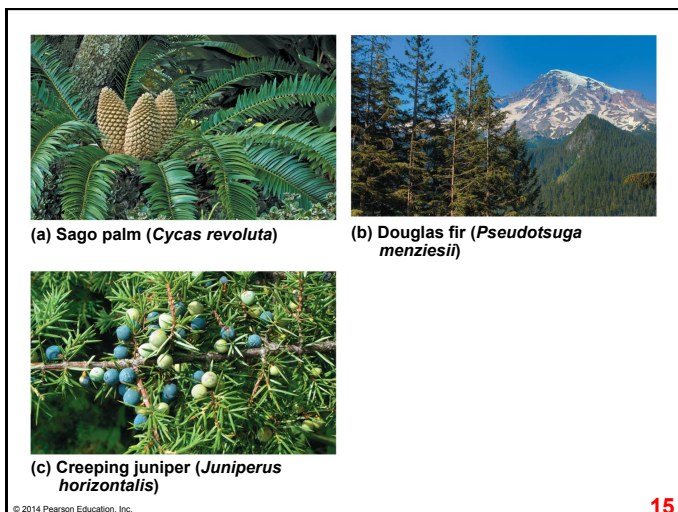
© 2014 Pearson Education, Inc.

13



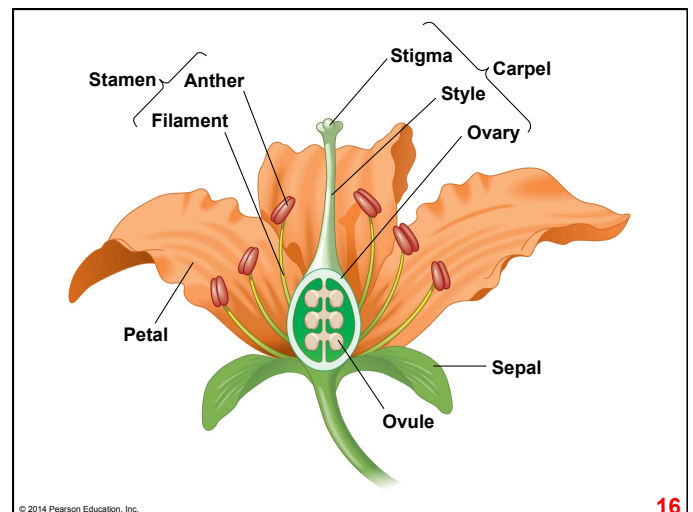
© 2014 Pearson Education, Inc.

14



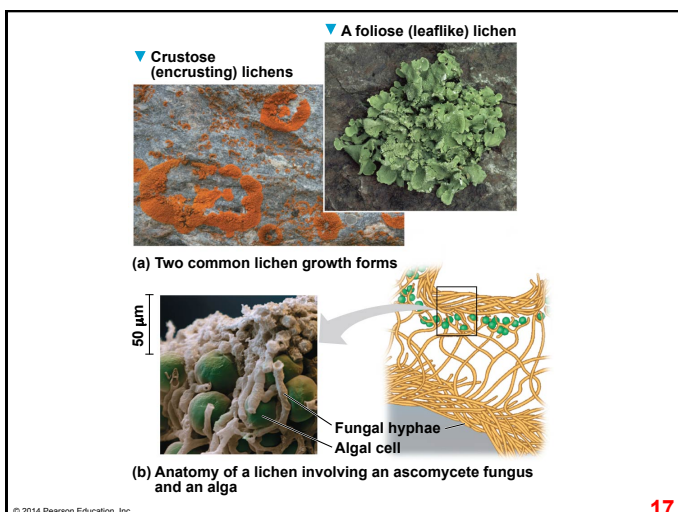
© 2014 Pearson Education, Inc.

15



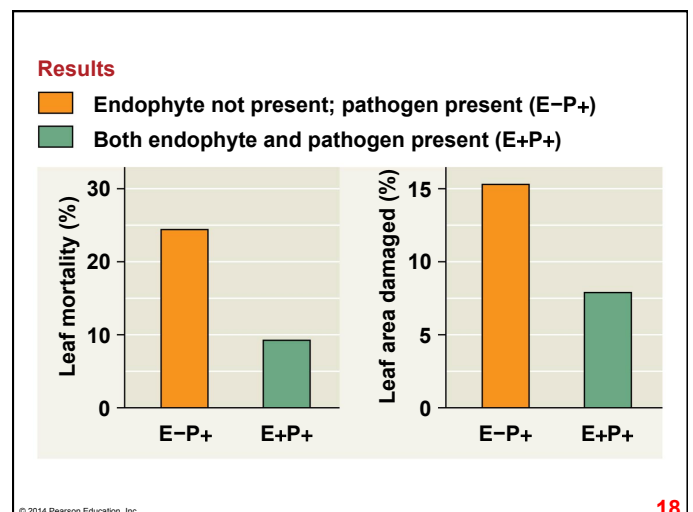
© 2014 Pearson Education, Inc.

16



© 2014 Pearson Education, Inc.

17

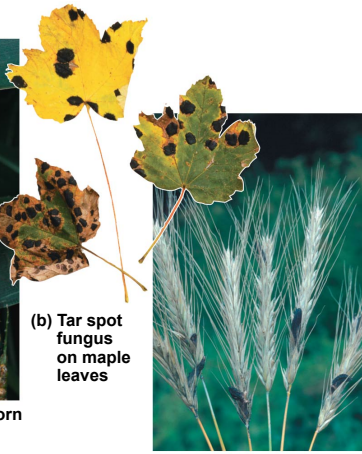


© 2014 Pearson Education, Inc.

18



(a) Corn smut on corn



(b) Tar spot fungus on maple leaves



(c) Ergots on rye



(a) A satellite image from 2000 shows clear-cut areas in Brazil (brown) surrounded by dense tropical forest (green).



(b) By 2009, much more of this same tropical forest had been cut down.

4 km



Bilateral symmetry



Radial symmetry

