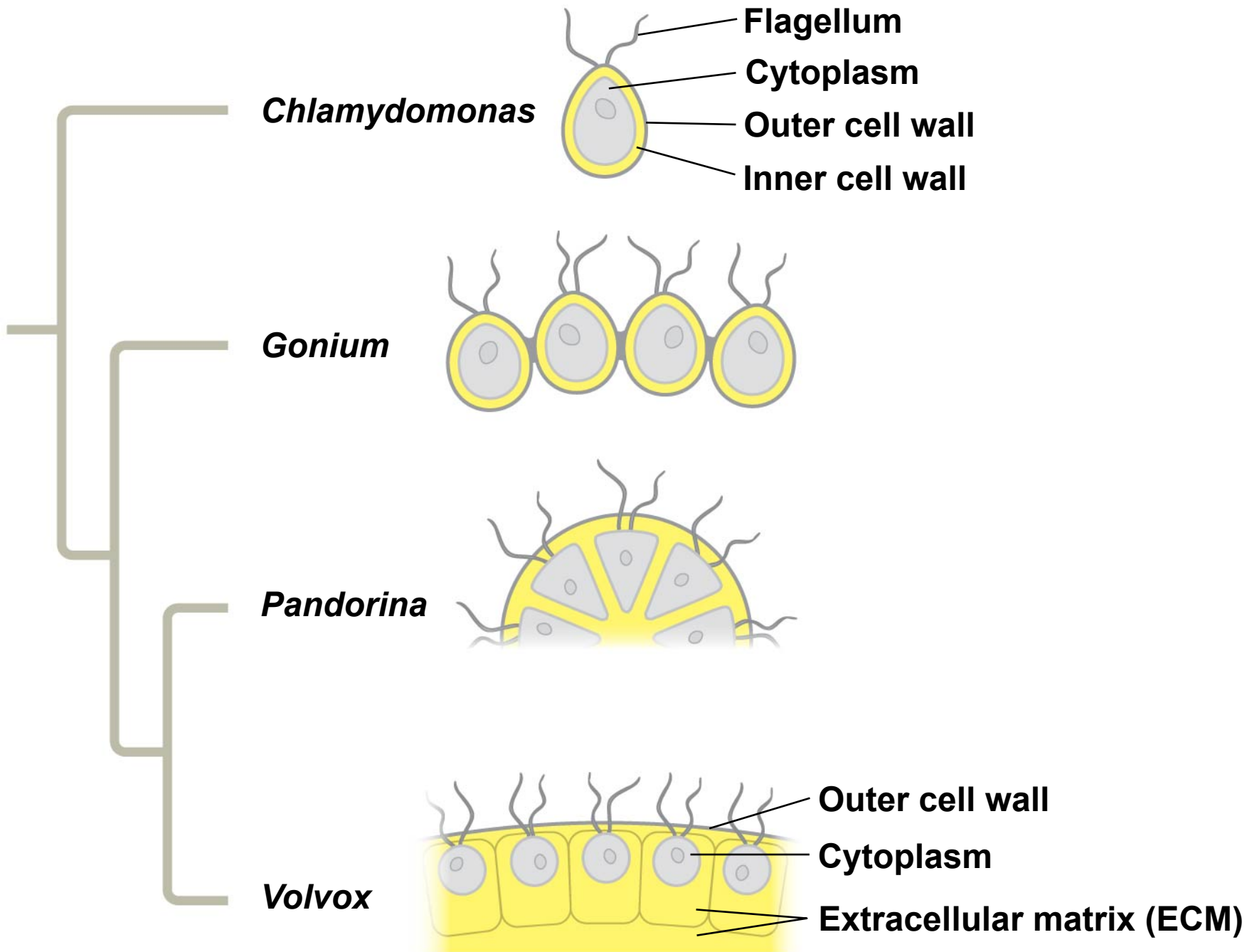
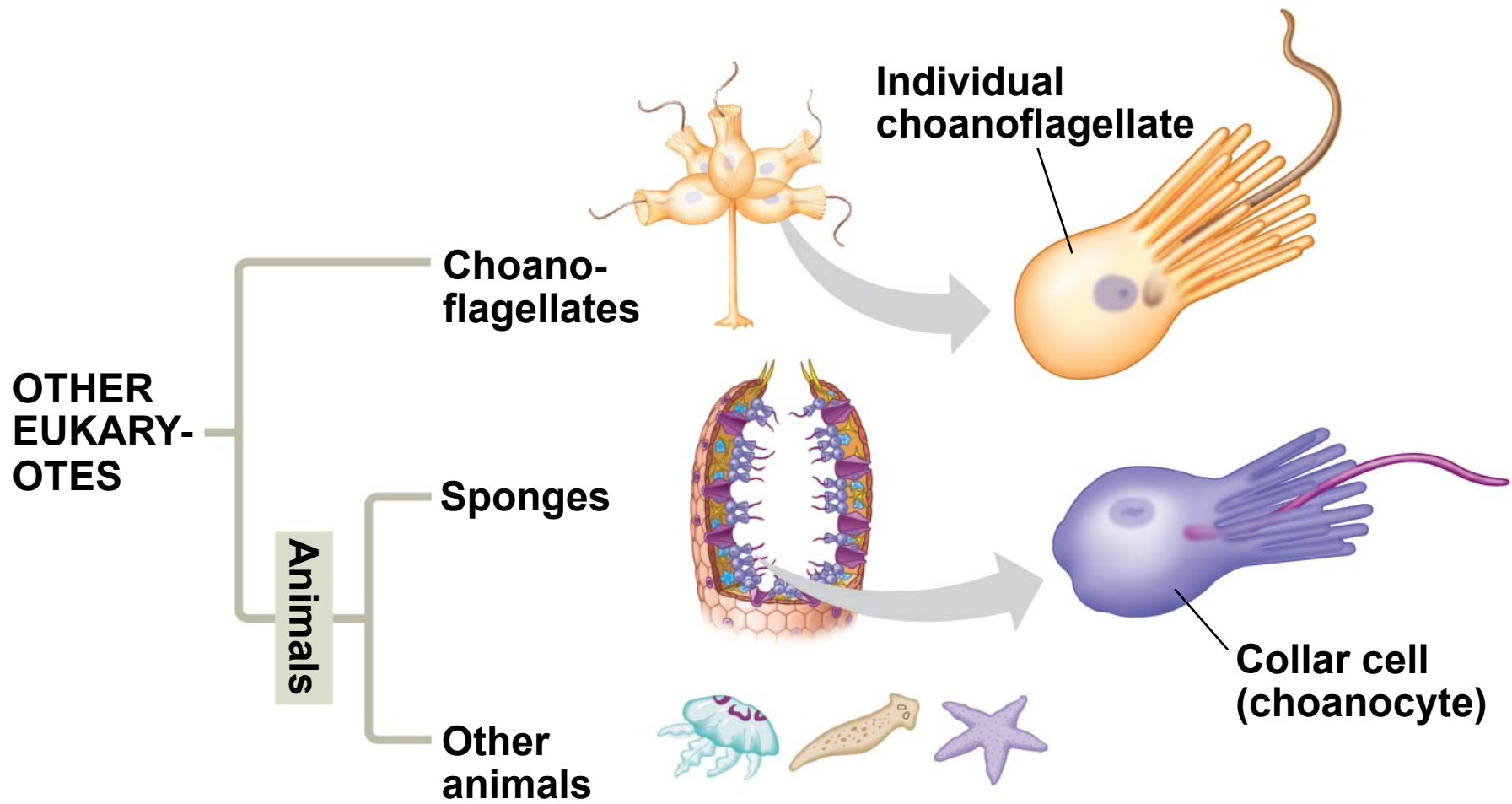
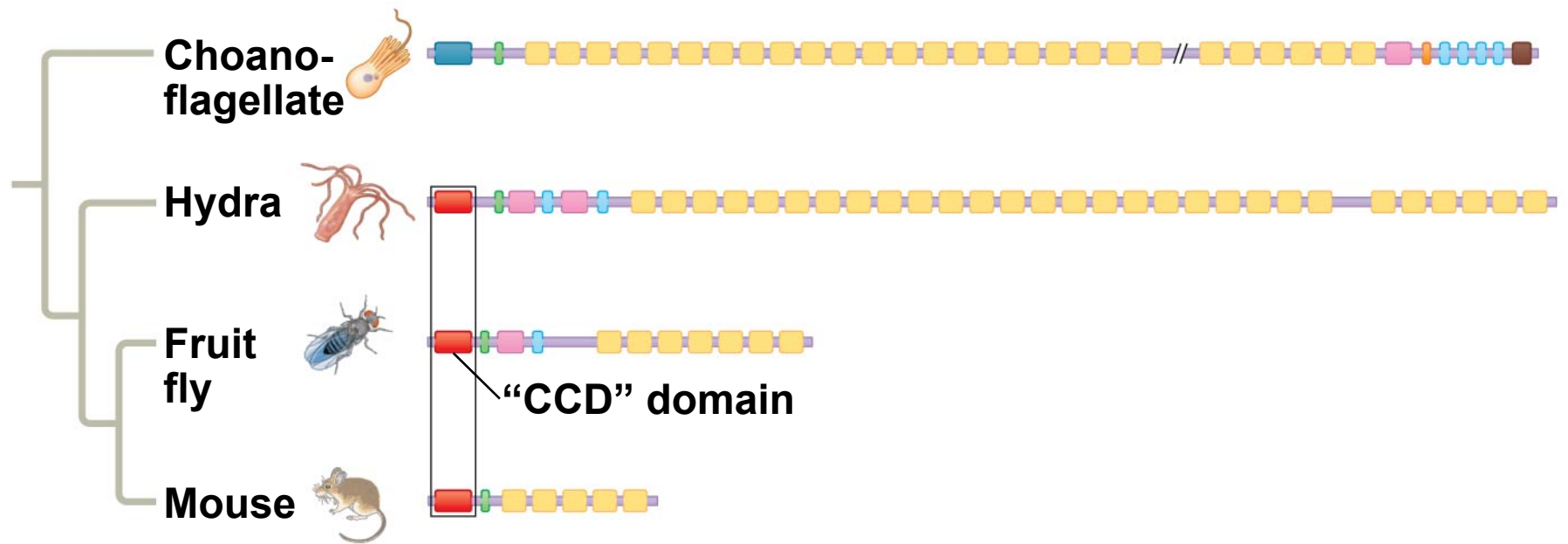
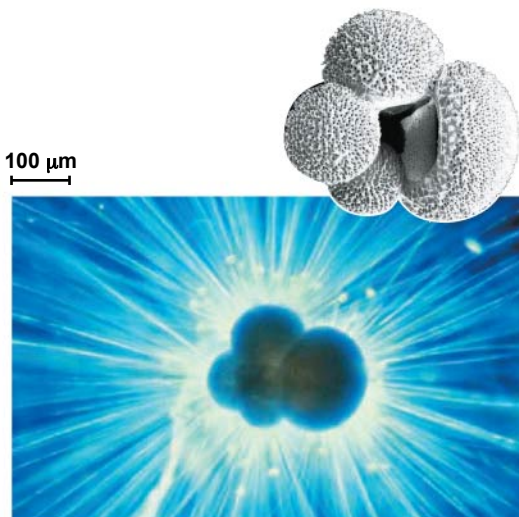
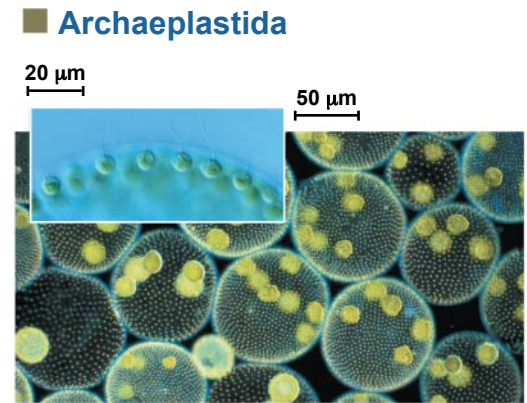
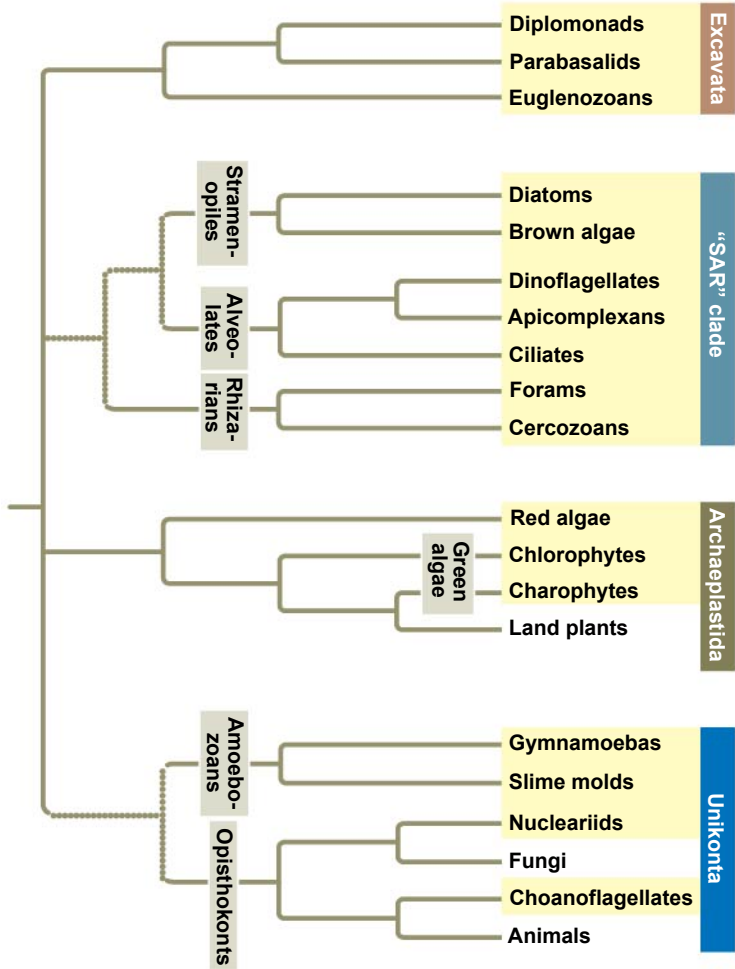


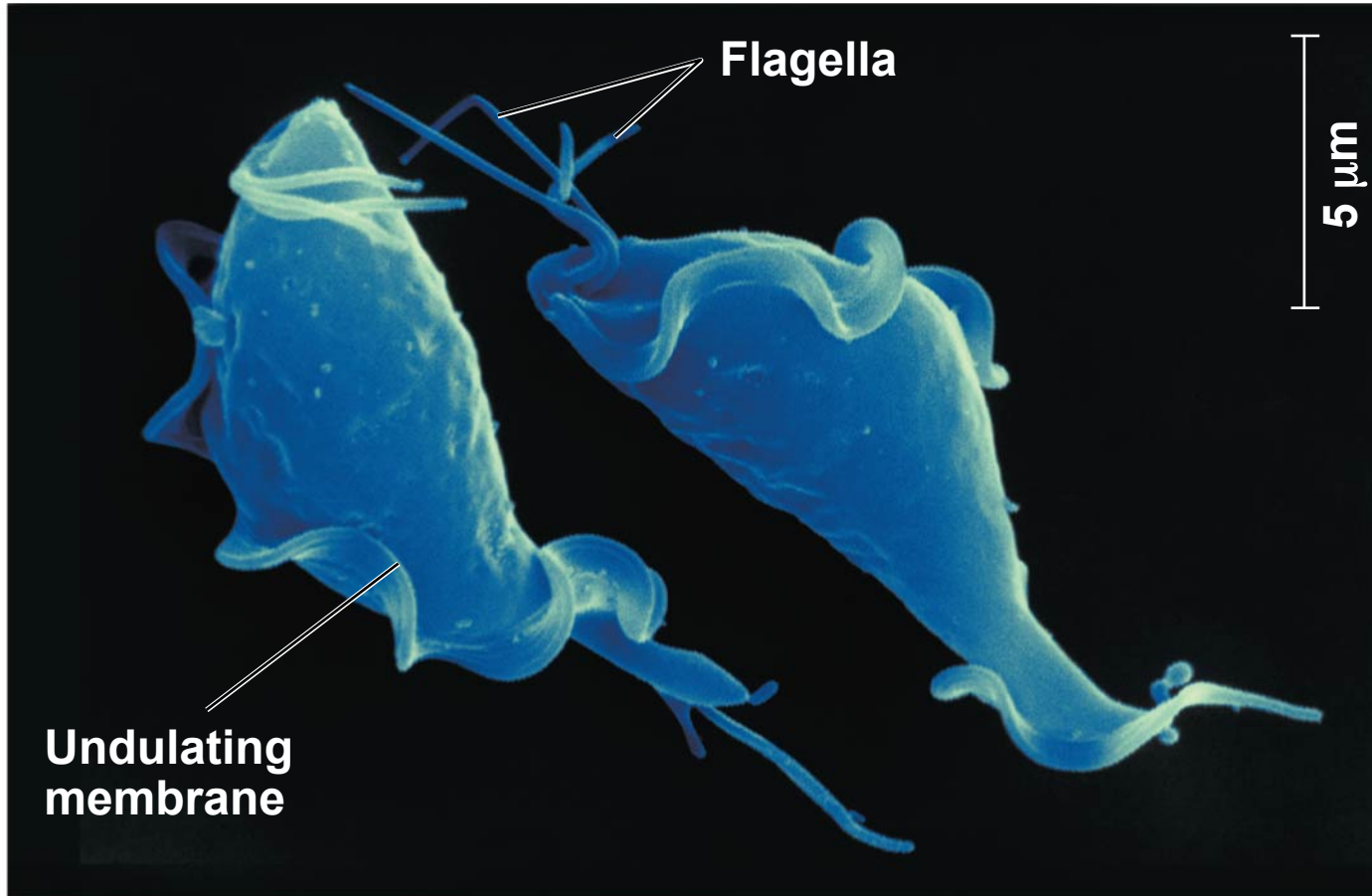
Pediastrum



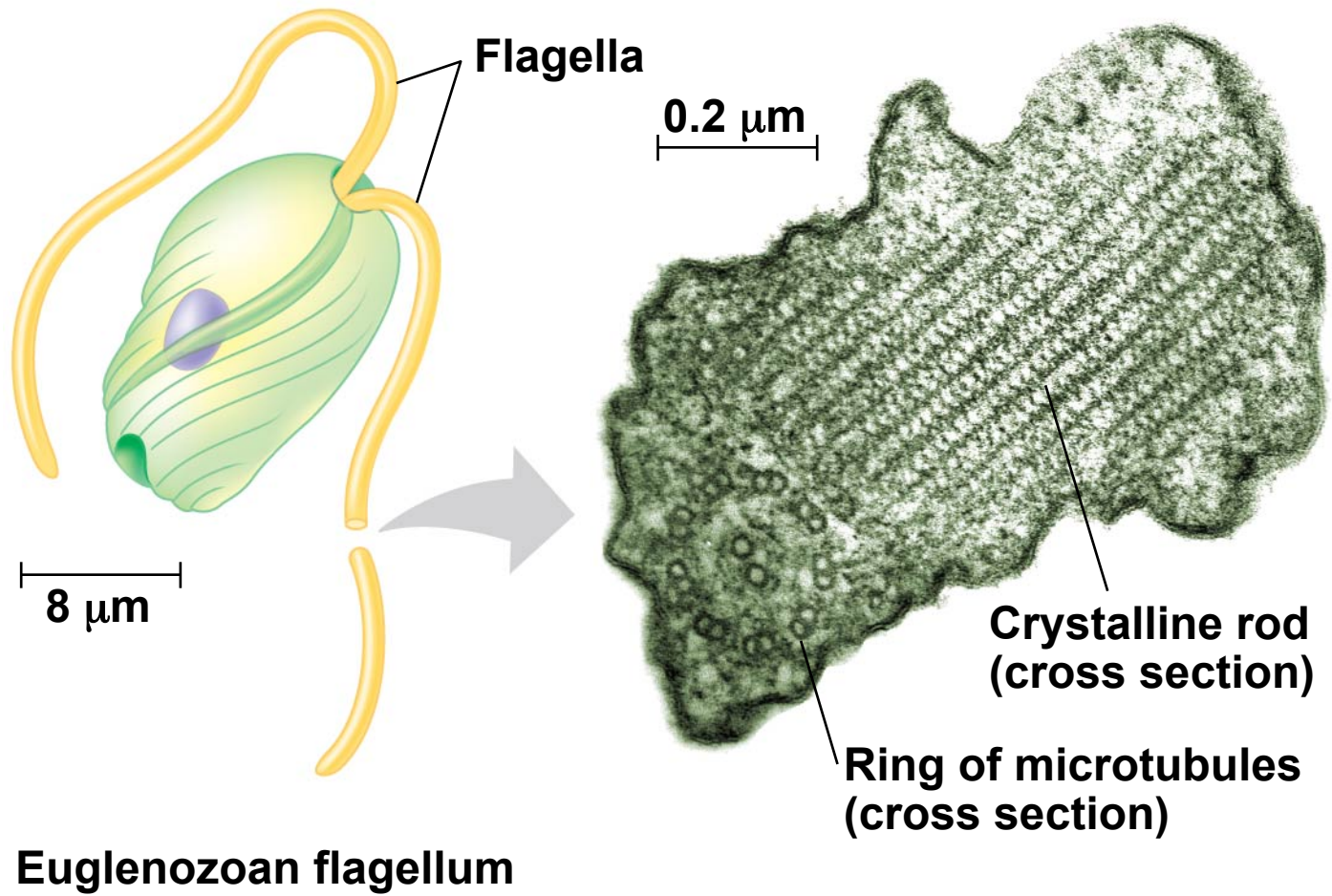


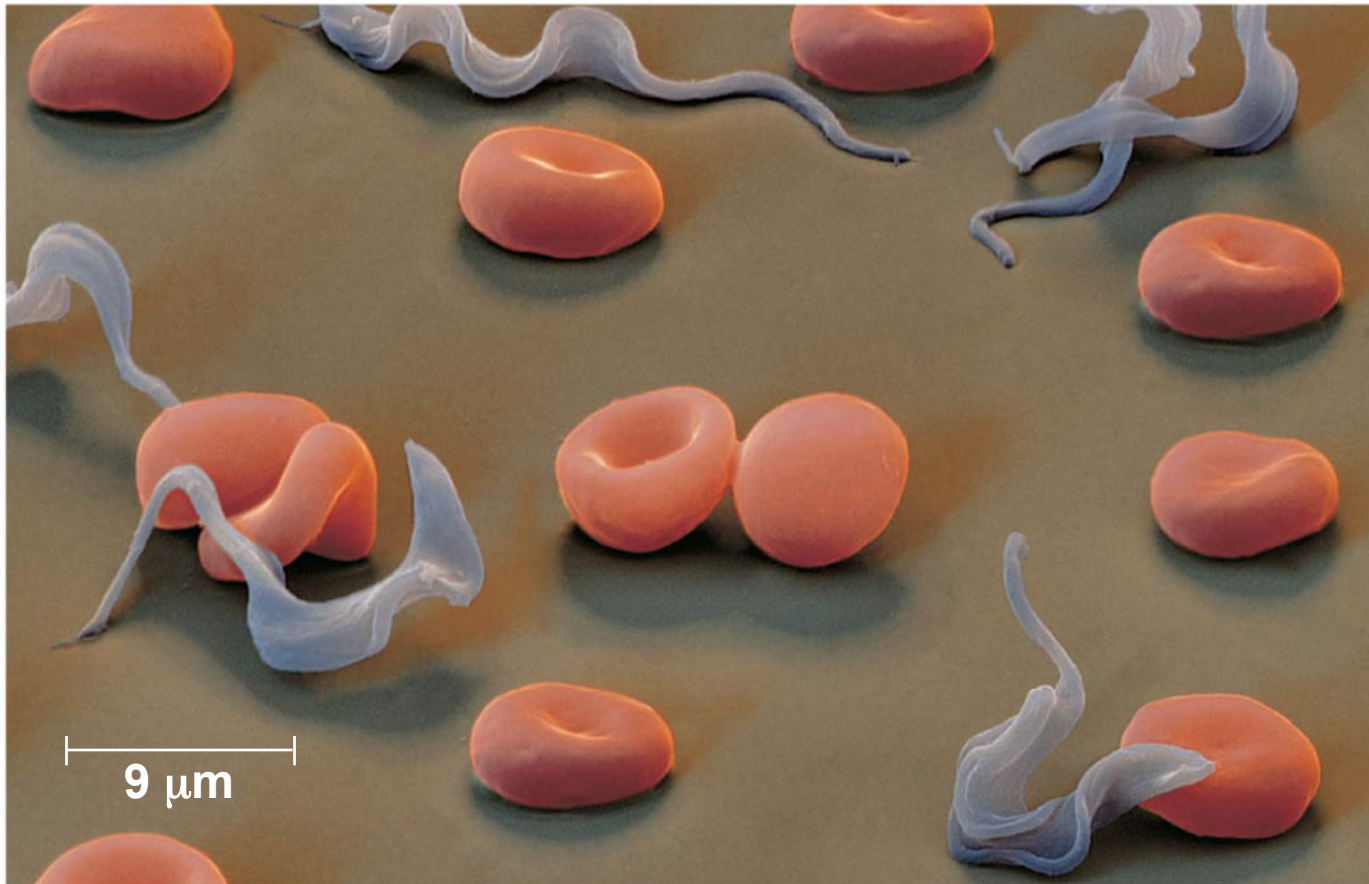




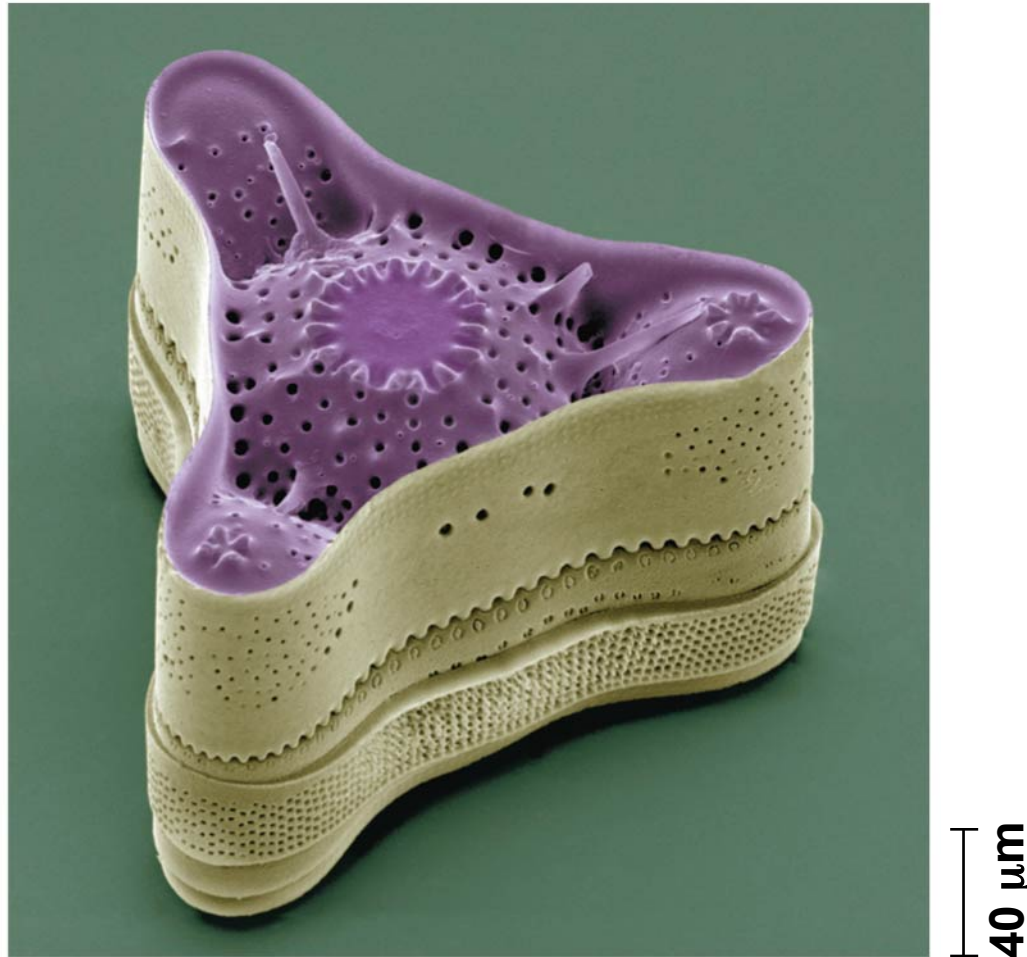


The parabasalid parasite, *Trichomonas vaginalis*
(colorized SEM)

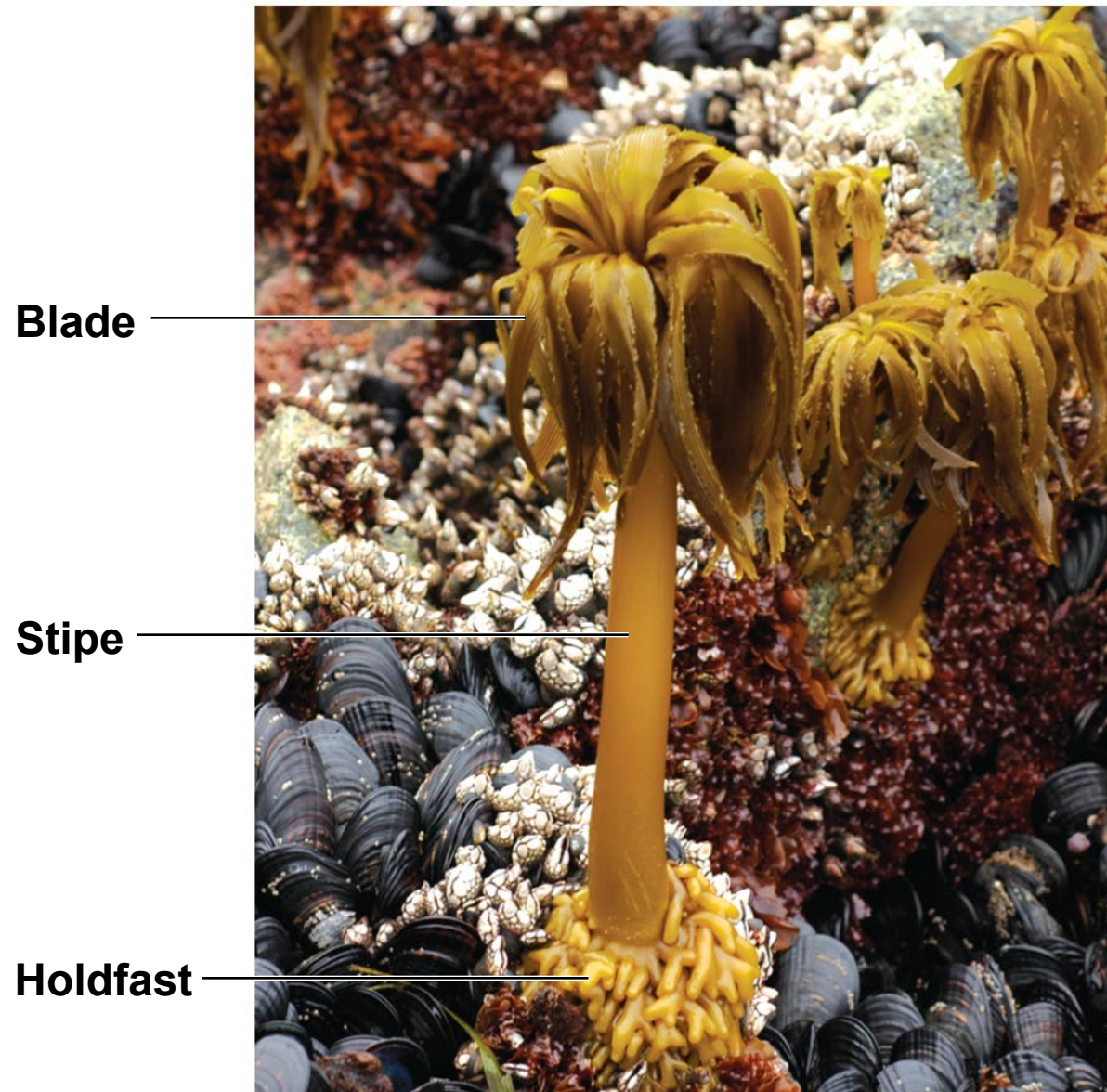




***Trypanosoma*, the kinetoplastid that causes sleeping sickness**



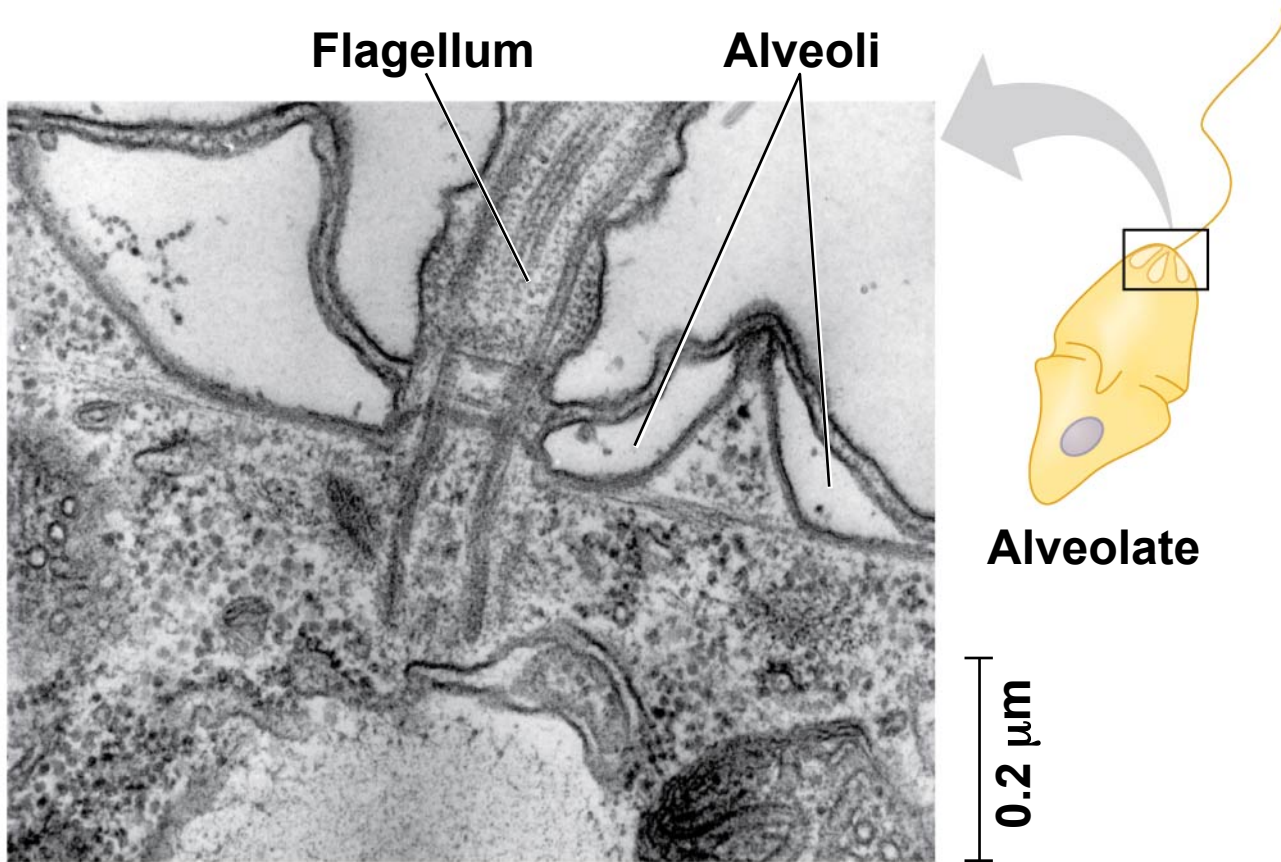
The diatom *Triceratium morlandii*
(colorized SEM)

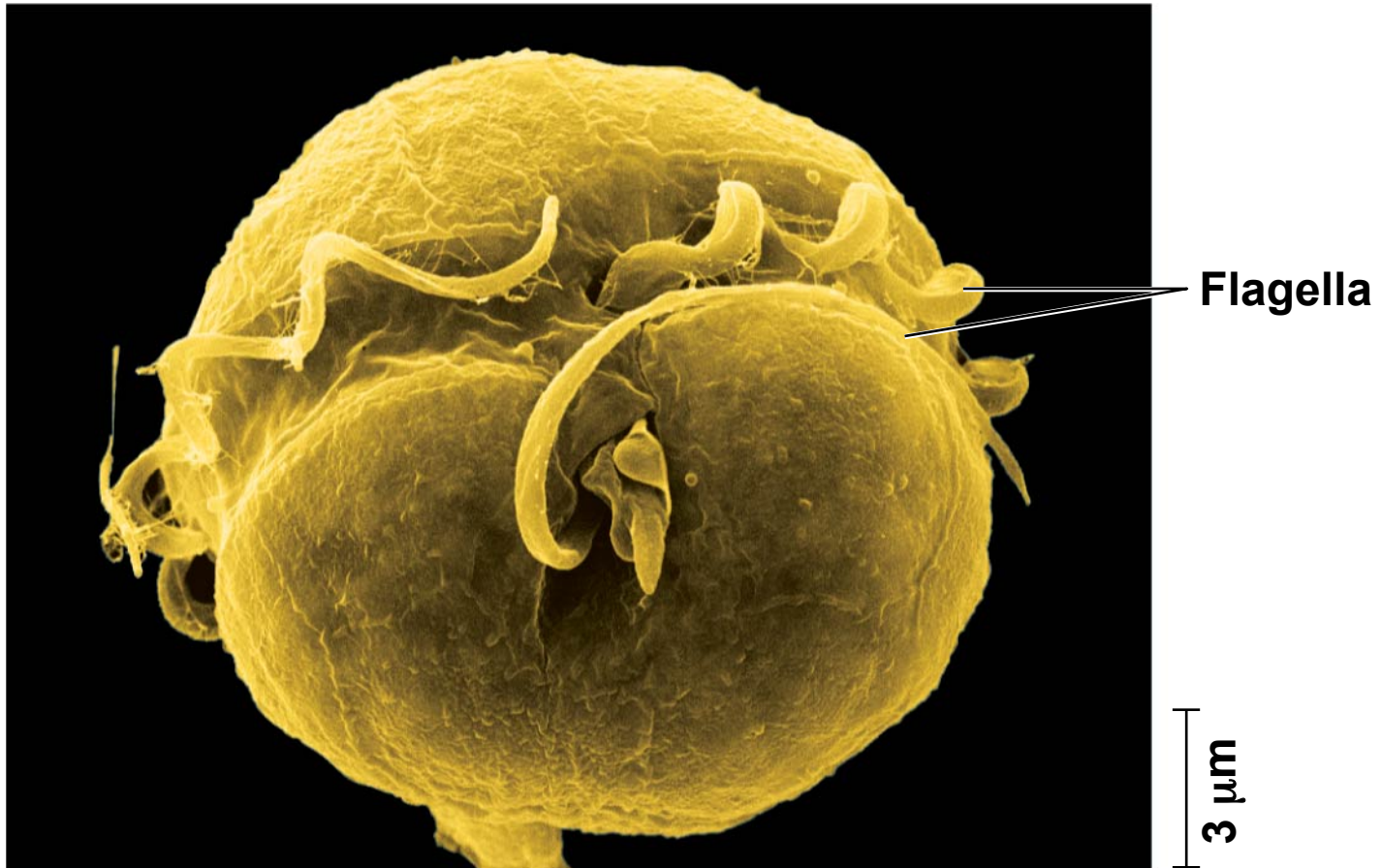


Blade

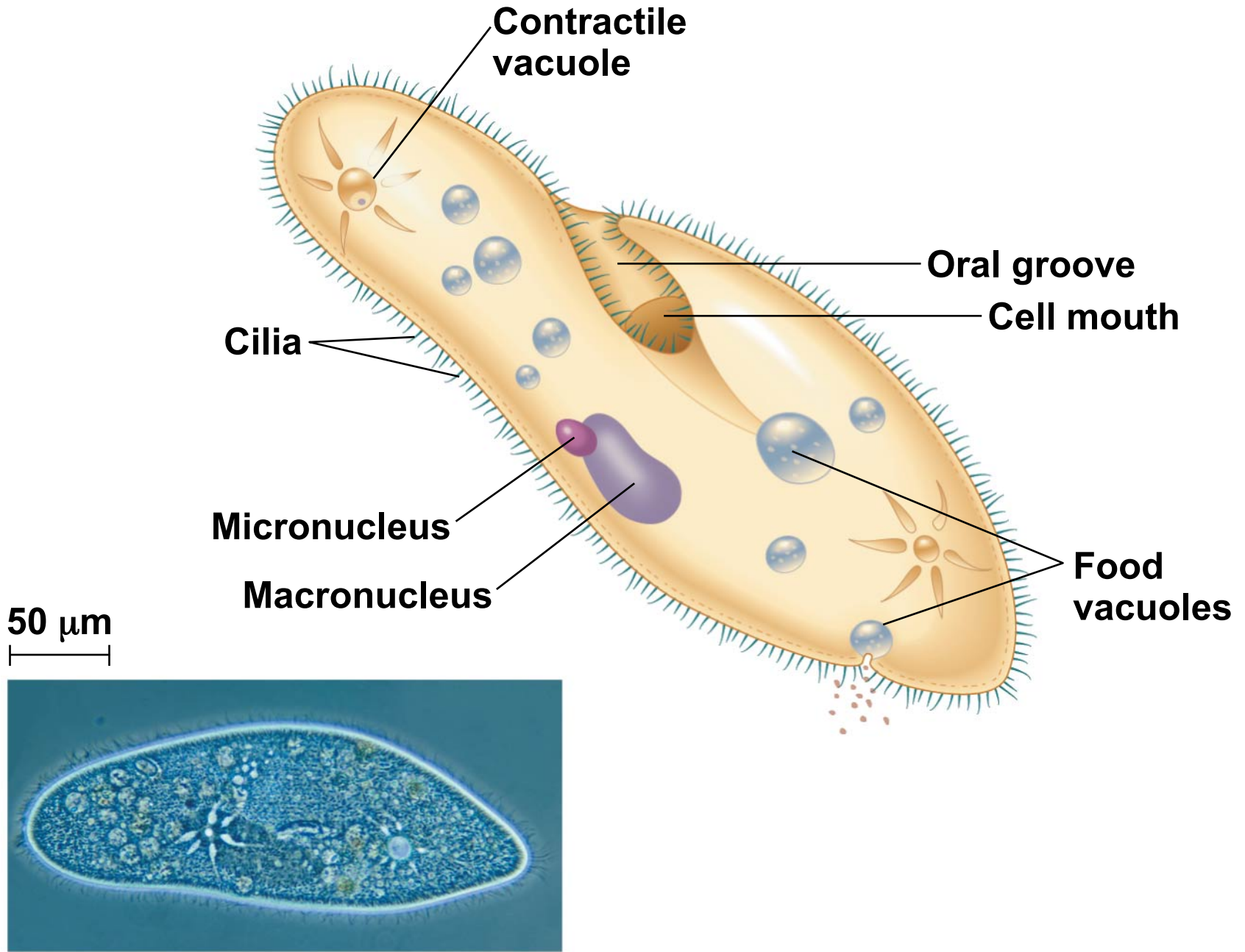
Stipe

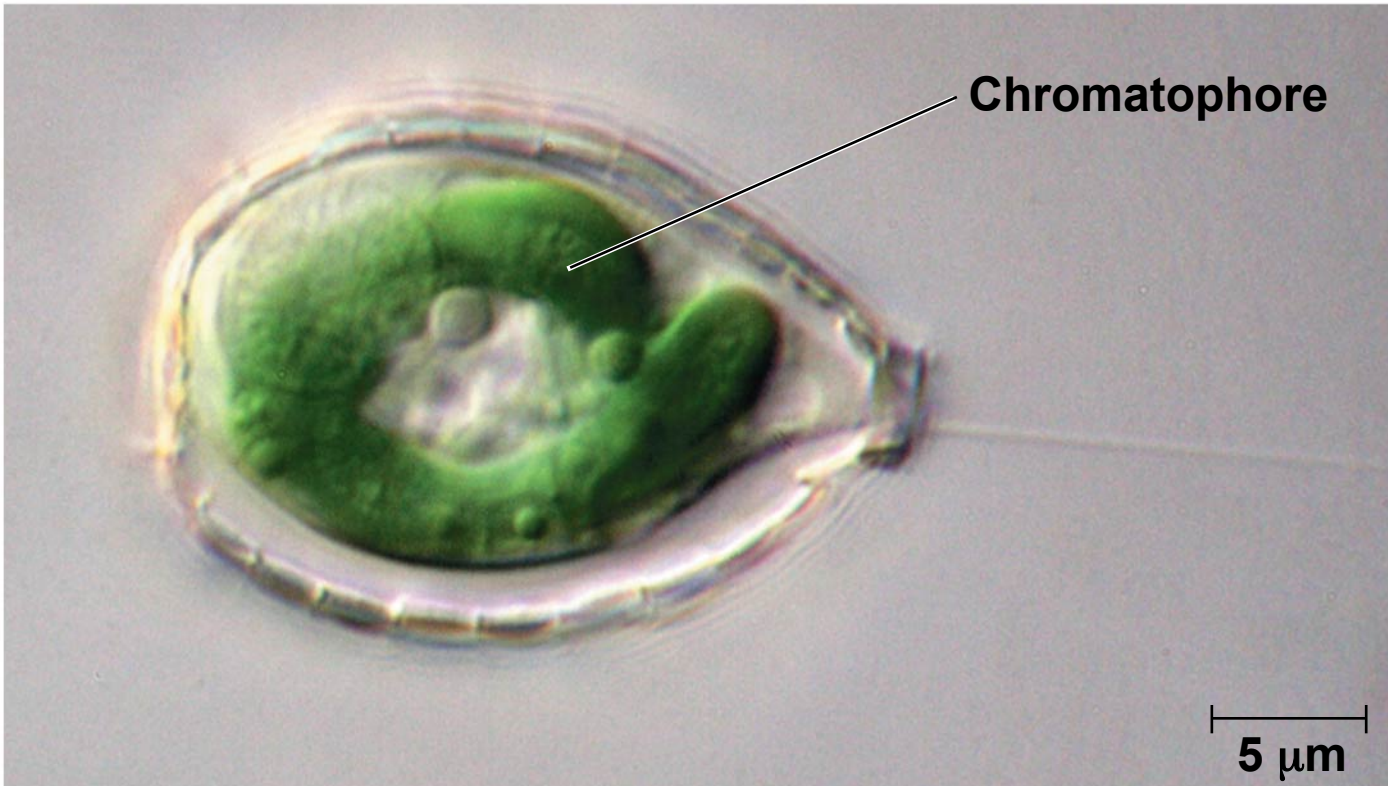
Holdfast





***Pfiesteria shumwayae*, a dinoflagellate**





Bonnemaisonia hamifera



8 mm

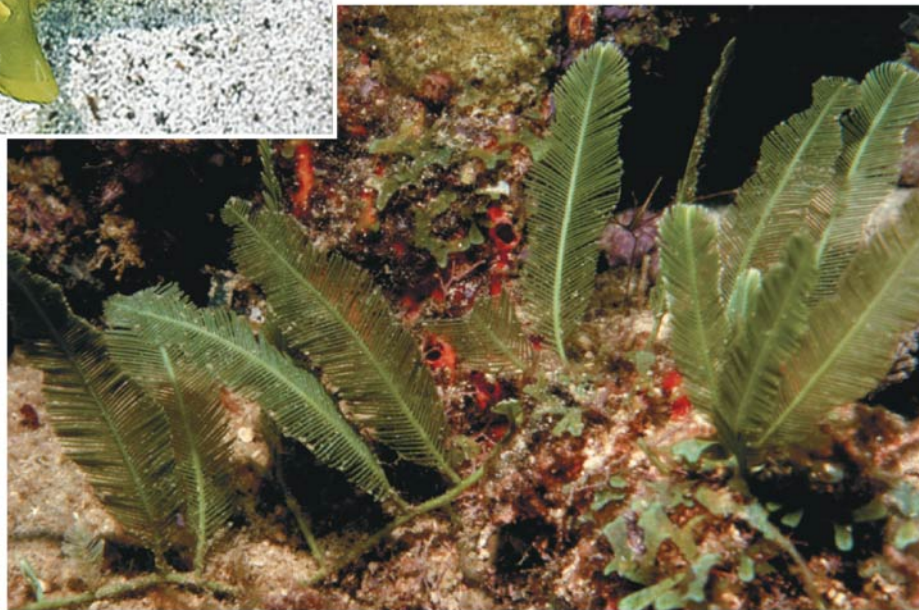
Nori



Red algae

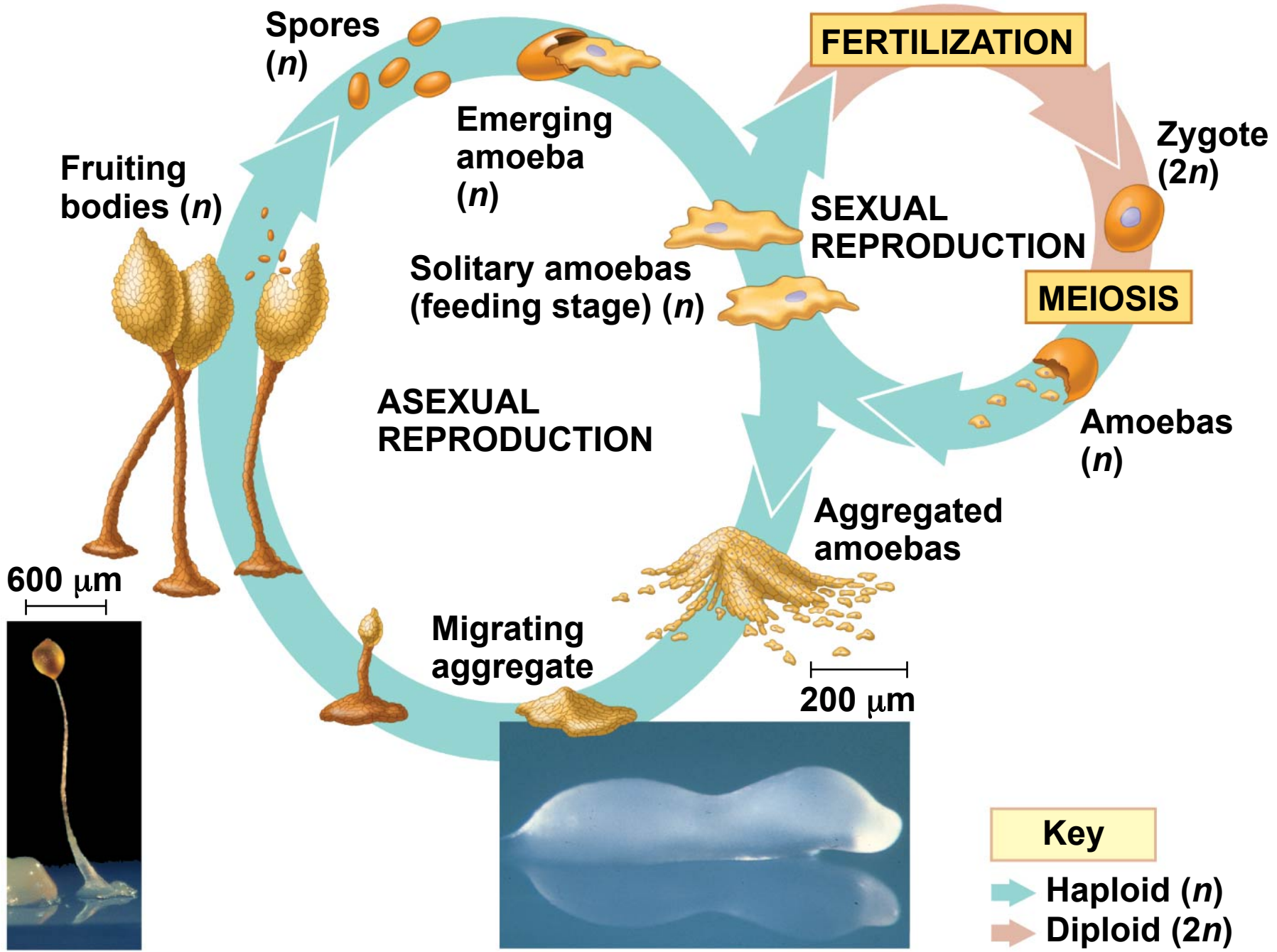


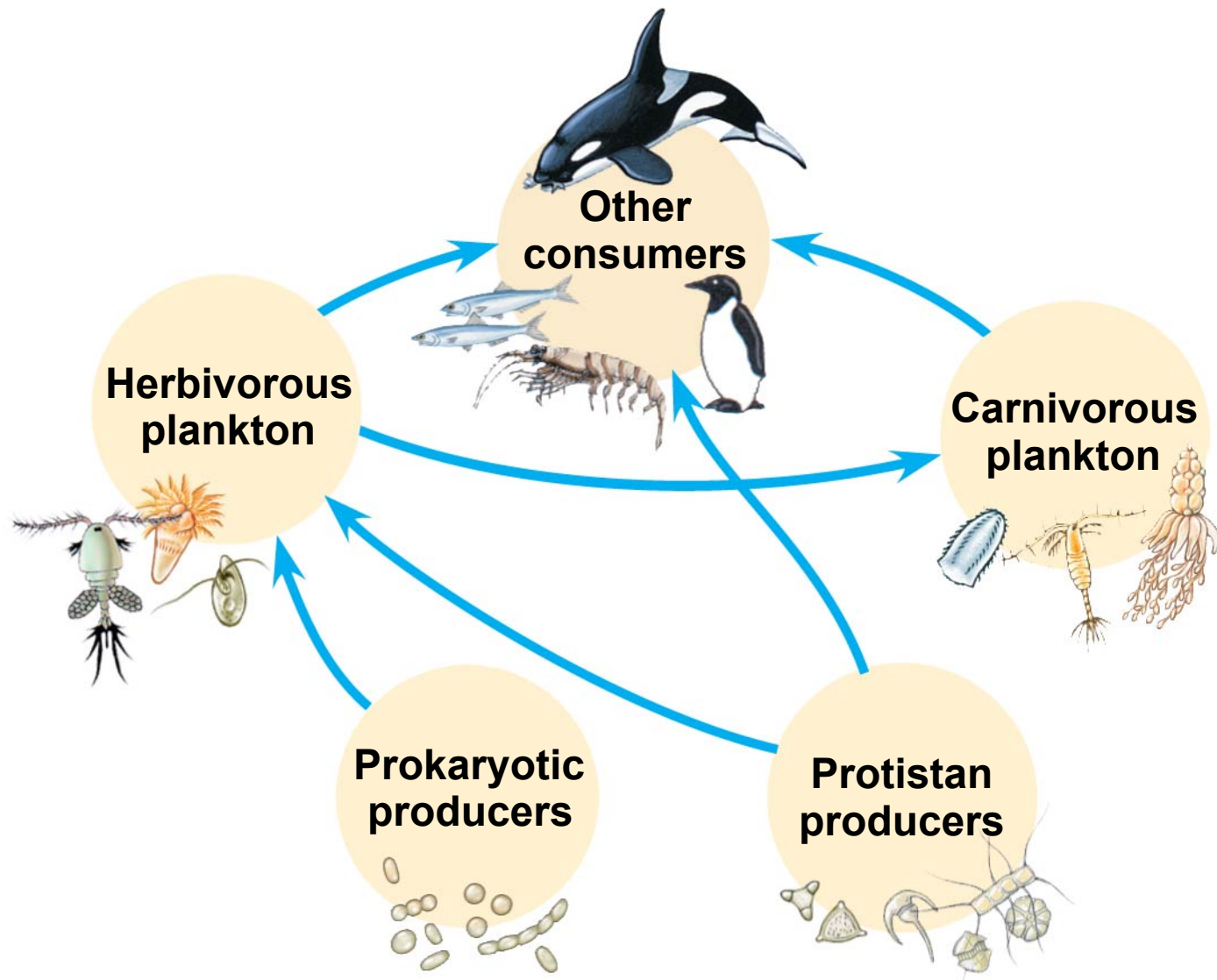
(a) *Ulva*, or sea lettuce

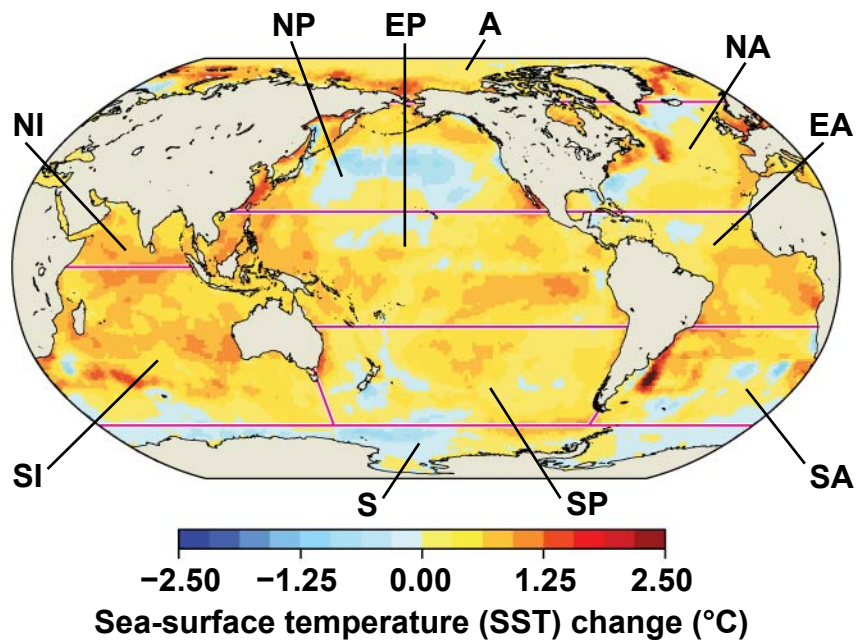


(b) *Caulerpa*, an intertidal chlorophyte

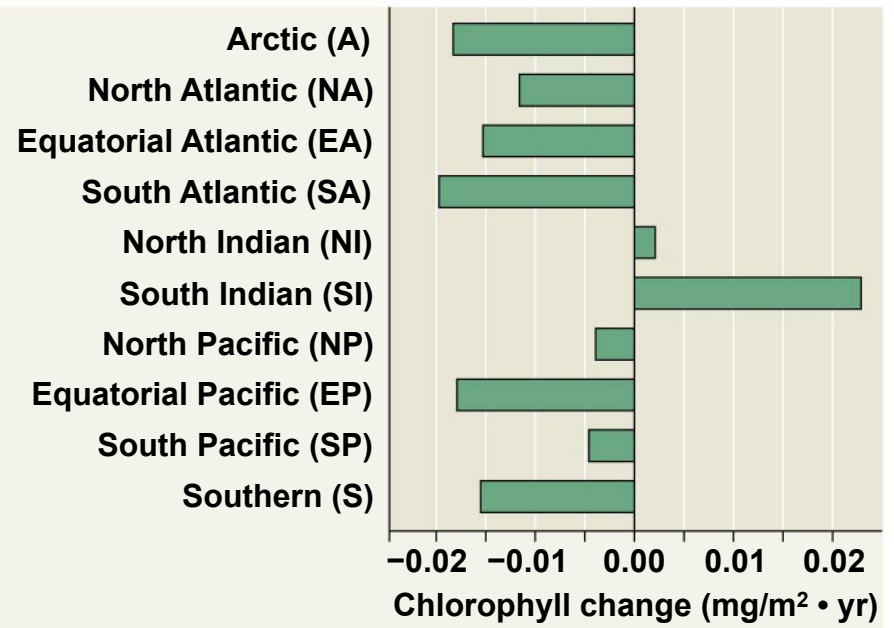
Multicellular chlorophytes







(a)



(b)

10 μm

