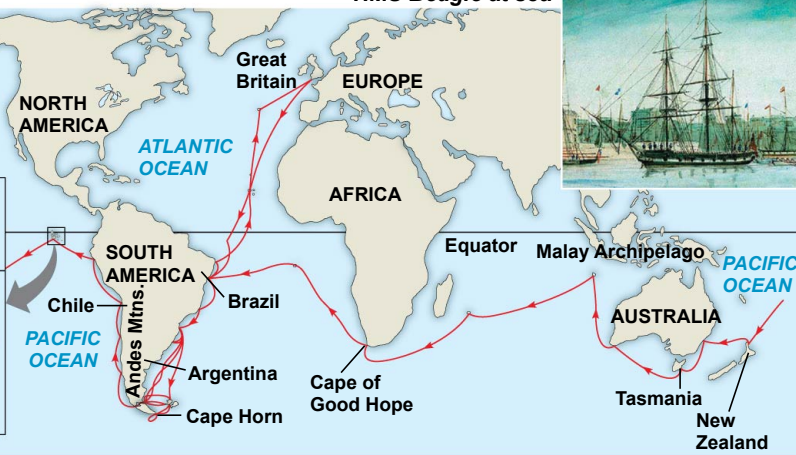


Darwin in 1840, after his return from the voyage



HMS Beagle at sea



(a) Cactus-eater

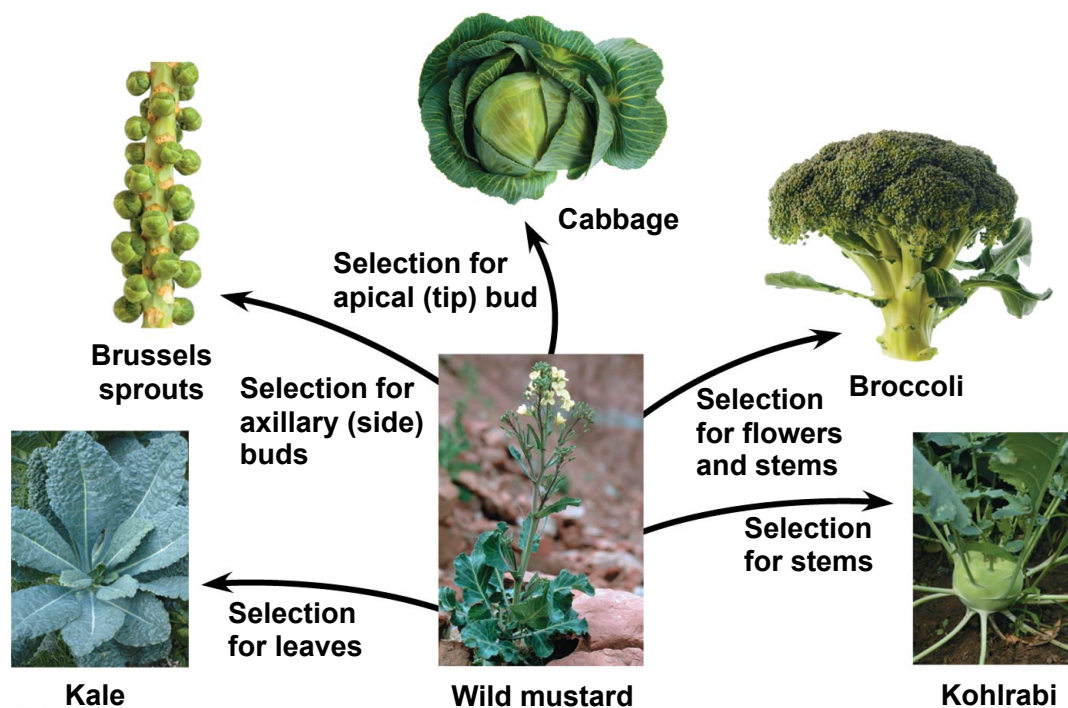
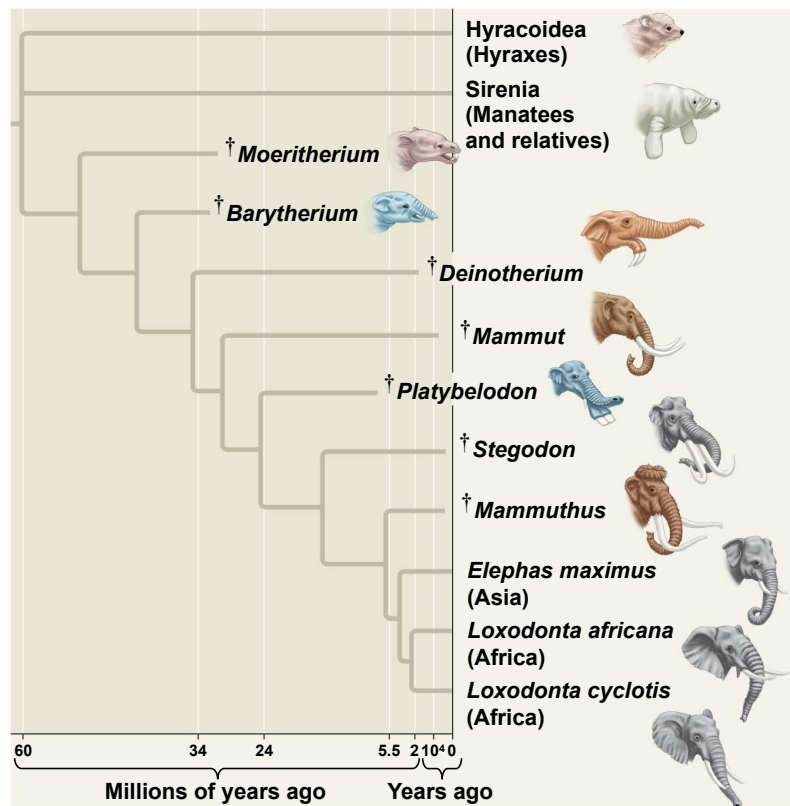


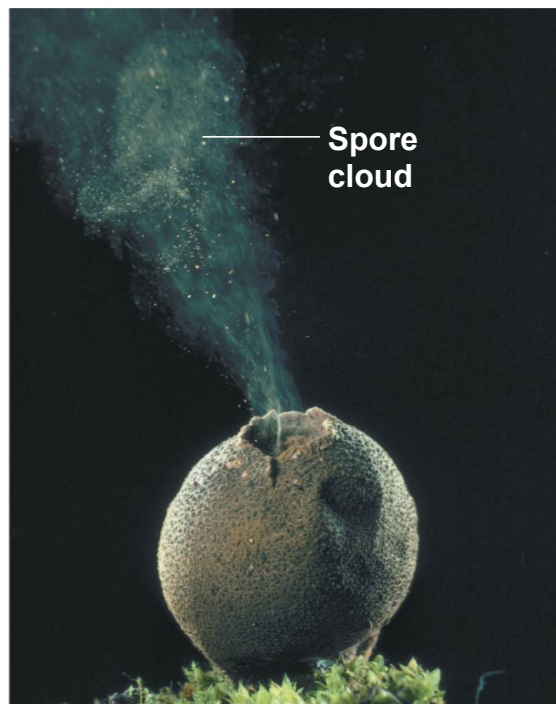
(c) Insect-eater



(b) Seed-eater







Observations

Individuals in a population
vary in their heritable
characteristics.

Organisms produce more
offspring than the
environment can support.

Inferences

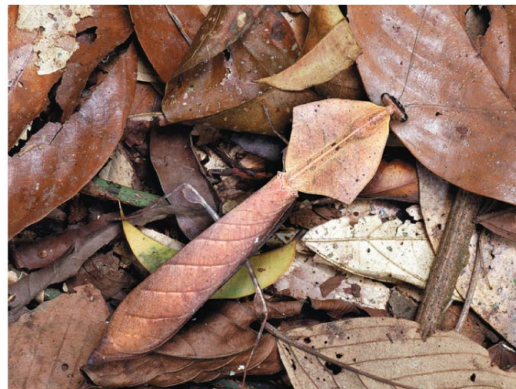
Individuals that are well suited
to their environment tend to leave more
offspring than other individuals.

and

Over time, favorable traits
accumulate in the population.



(a) A flower mantid in Malaysia



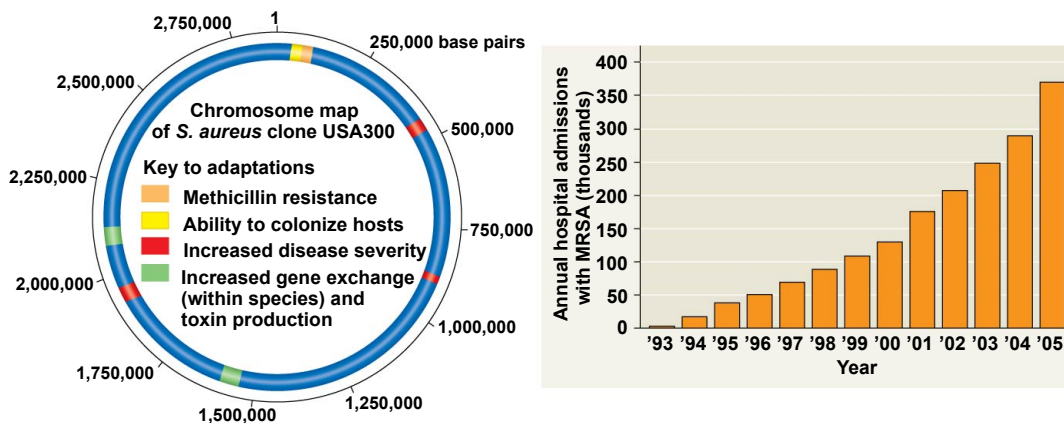
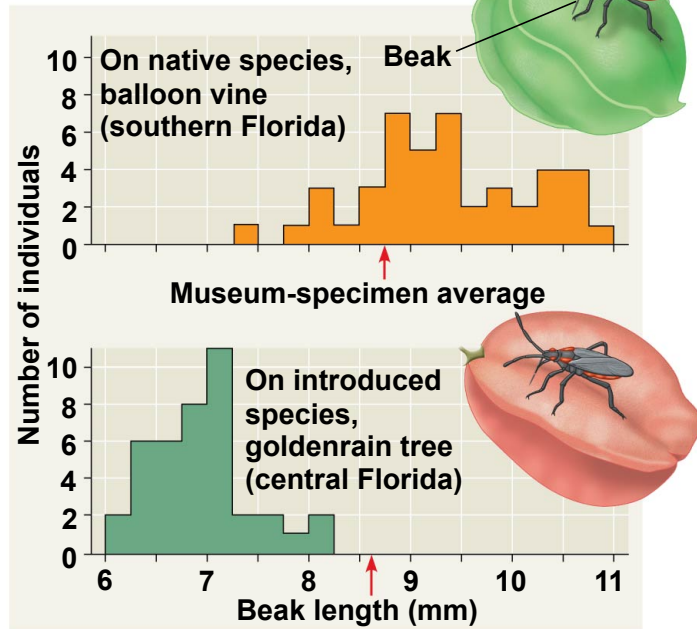
(b) A leaf mantid in Borneo

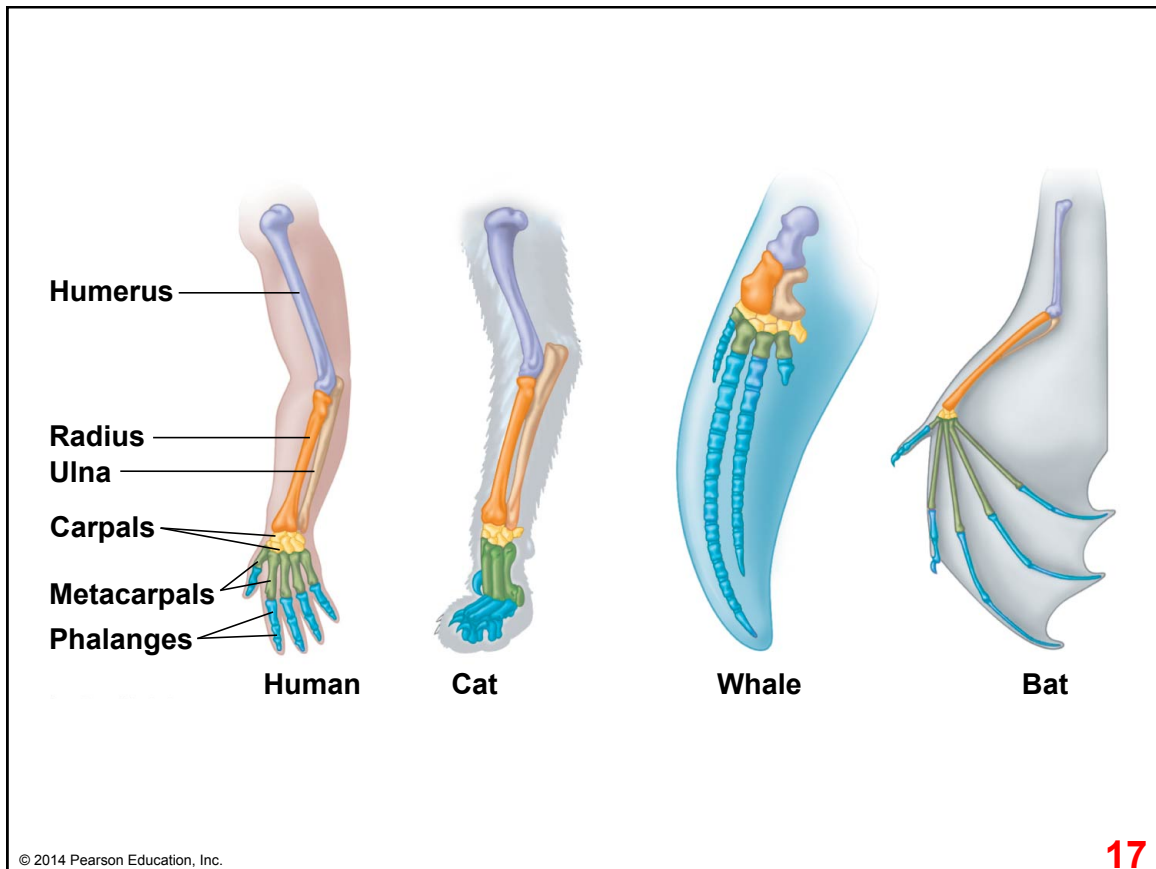
Field Study



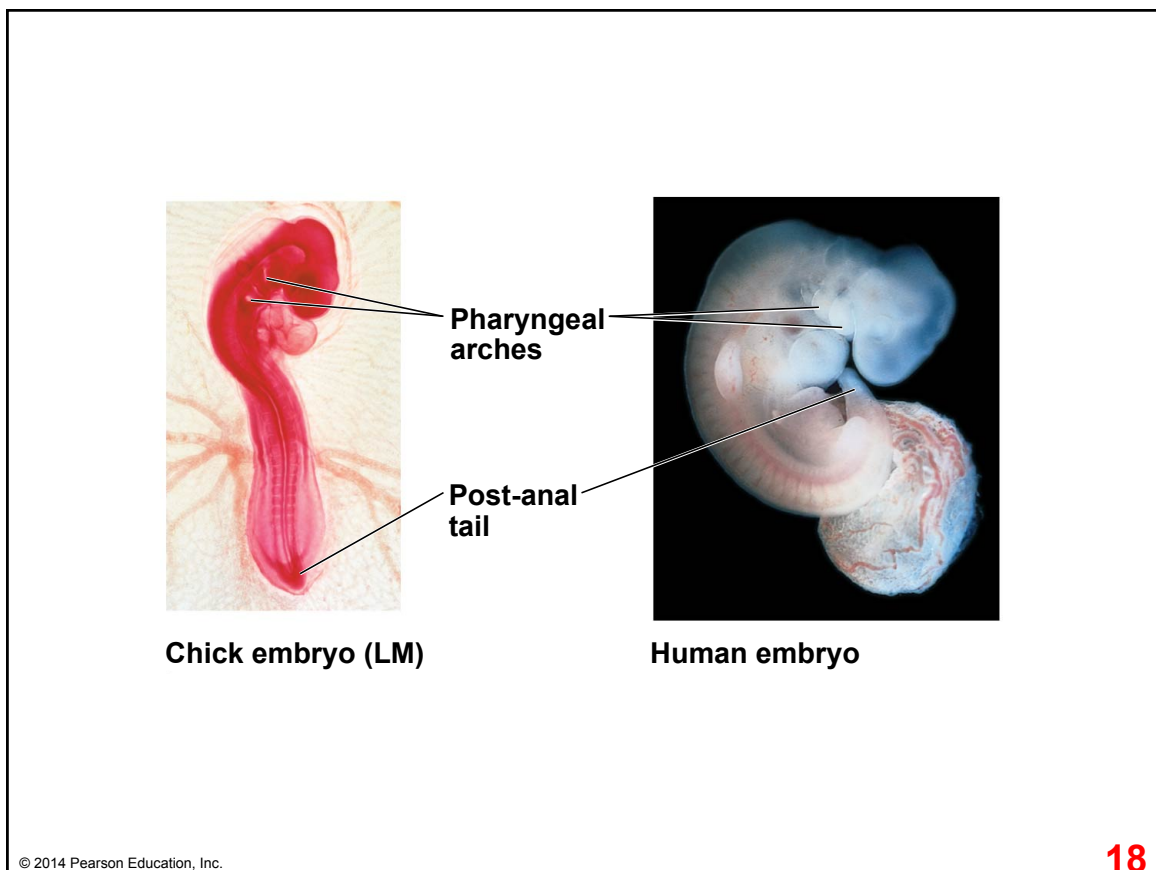
Soapberry bug with beak inserted in balloon vine fruit

Results





17



18

