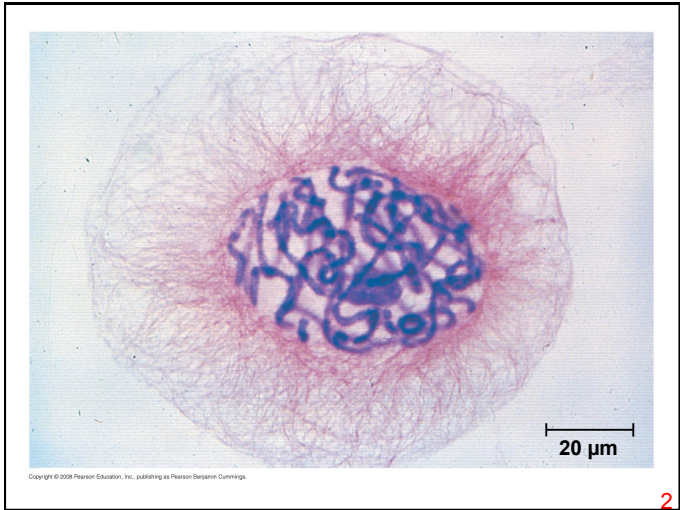
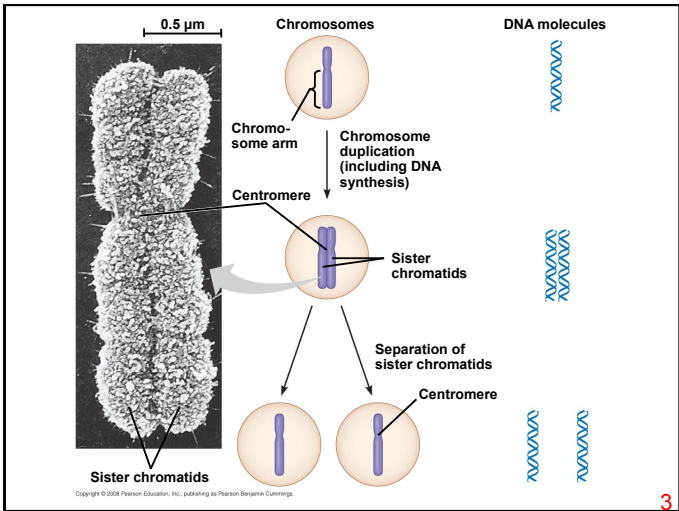


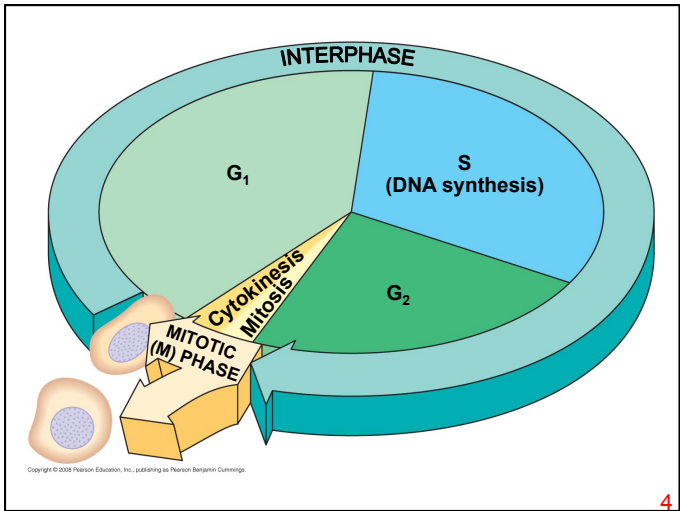
1



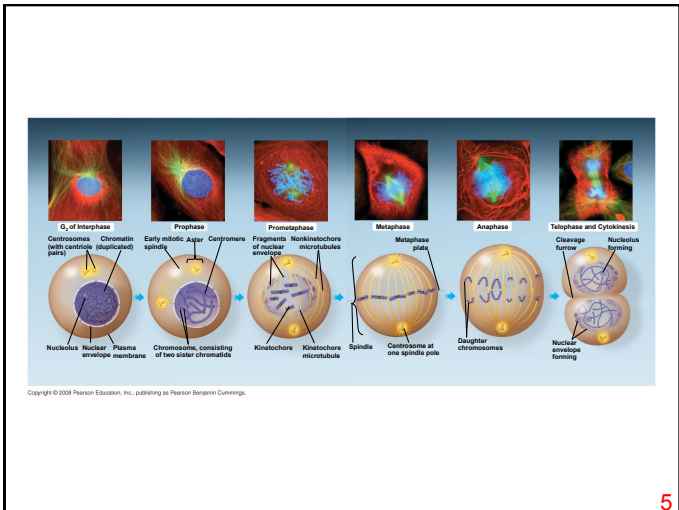
2



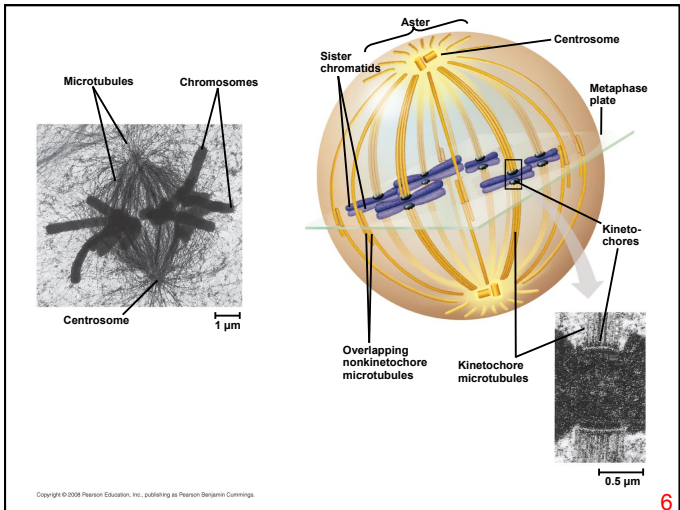
3



4

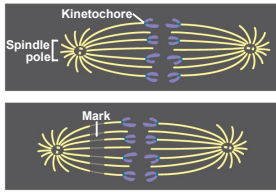


5

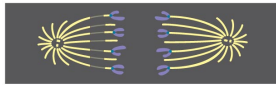


6

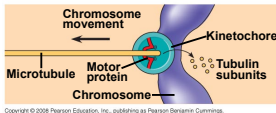
EXPERIMENT



RESULTS

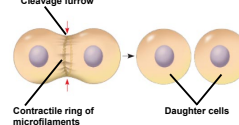
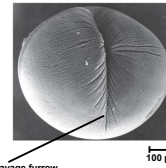


CONCLUSION

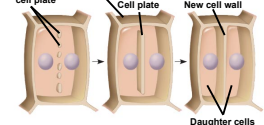
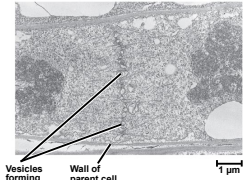


Copyright © 2008 Pearson Education, Inc., publishing as Pearson Benjamin Cummings.

7

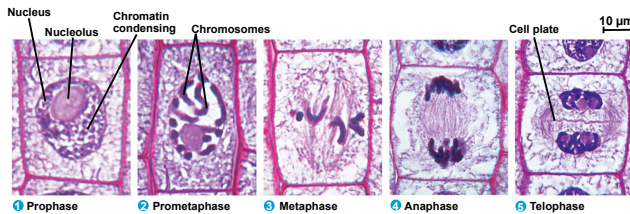


(a) Cleavage of an animal cell (SEM)
Copyright © 2008 Pearson Education, Inc., publishing as Pearson Benjamin Cummings.



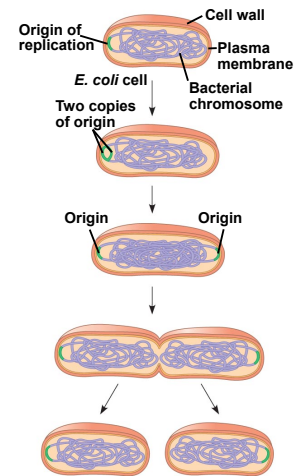
(b) Cell plate formation in a plant cell (TEM)

8



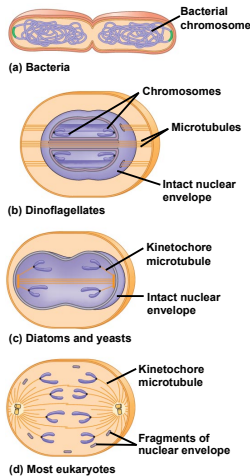
Copyright © 2008 Pearson Education, Inc., publishing as Pearson Benjamin Cummings.

9



Copyright © 2008 Pearson Education, Inc., publishing as Pearson Benjamin Cummings.

10

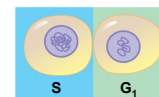


Copyright © 2008 Pearson Education, Inc., publishing as Pearson Benjamin Cummings.

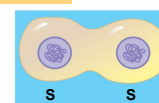
11

EXPERIMENT

Experiment 1

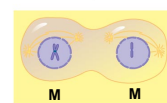
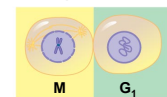


RESULTS



When a cell in the S phase was fused with a cell in G₁, the G₁ nucleus immediately entered the S phase—DNA was synthesized.

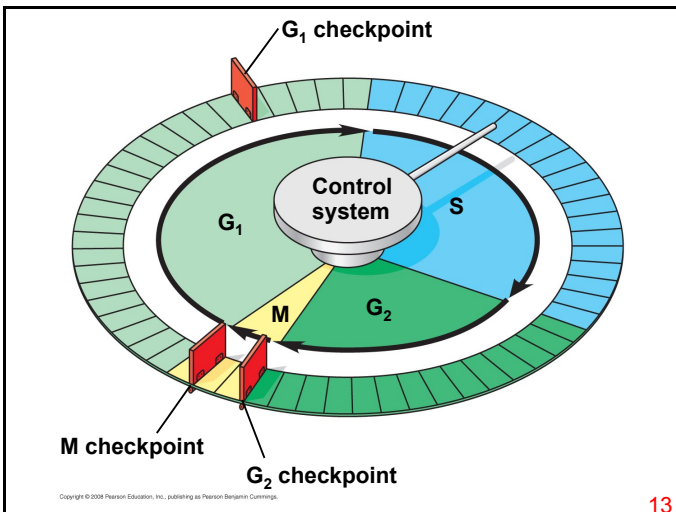
Experiment 2



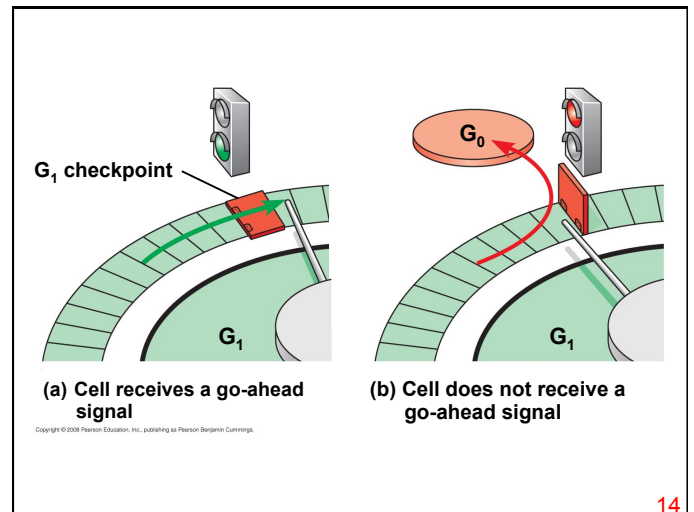
When a cell in the M phase was fused with a cell in G₁, the G₁ nucleus immediately began mitosis—a spindle formed and chromatin condensed, even though the chromosome had not been duplicated.

Copyright © 2008 Pearson Education, Inc., publishing as Pearson Benjamin Cummings.

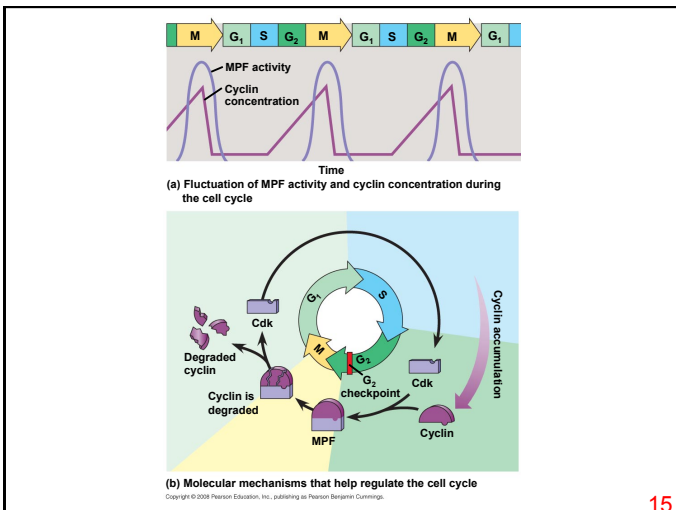
12



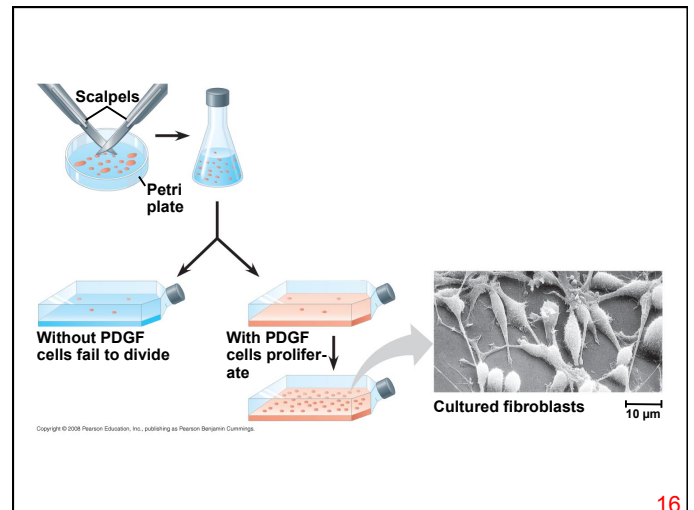
13



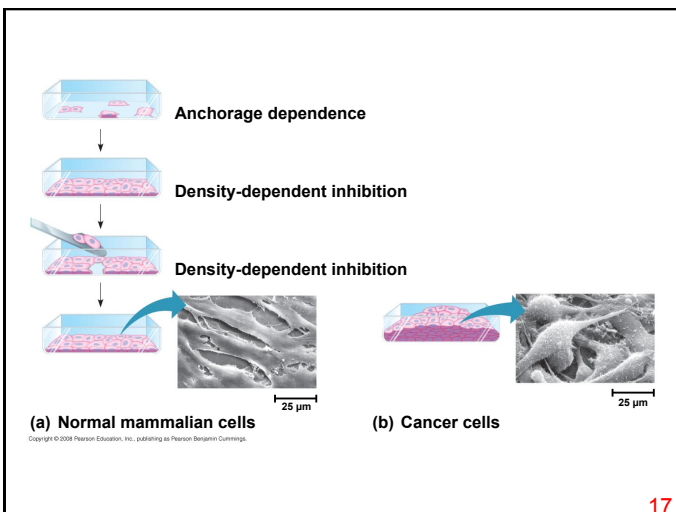
14



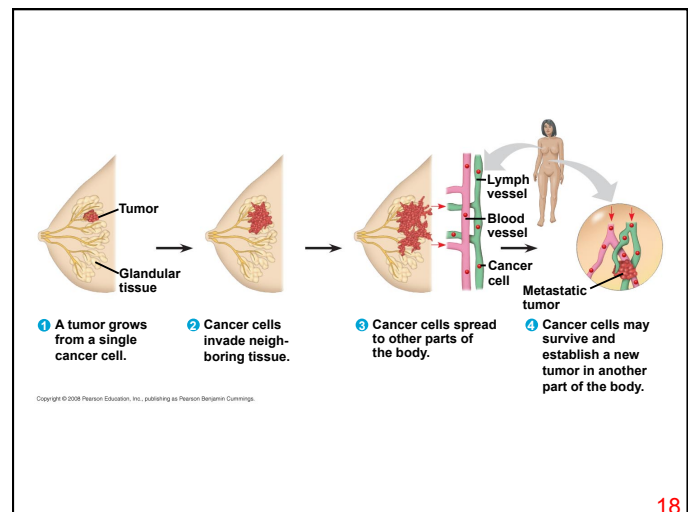
15



16



17



18