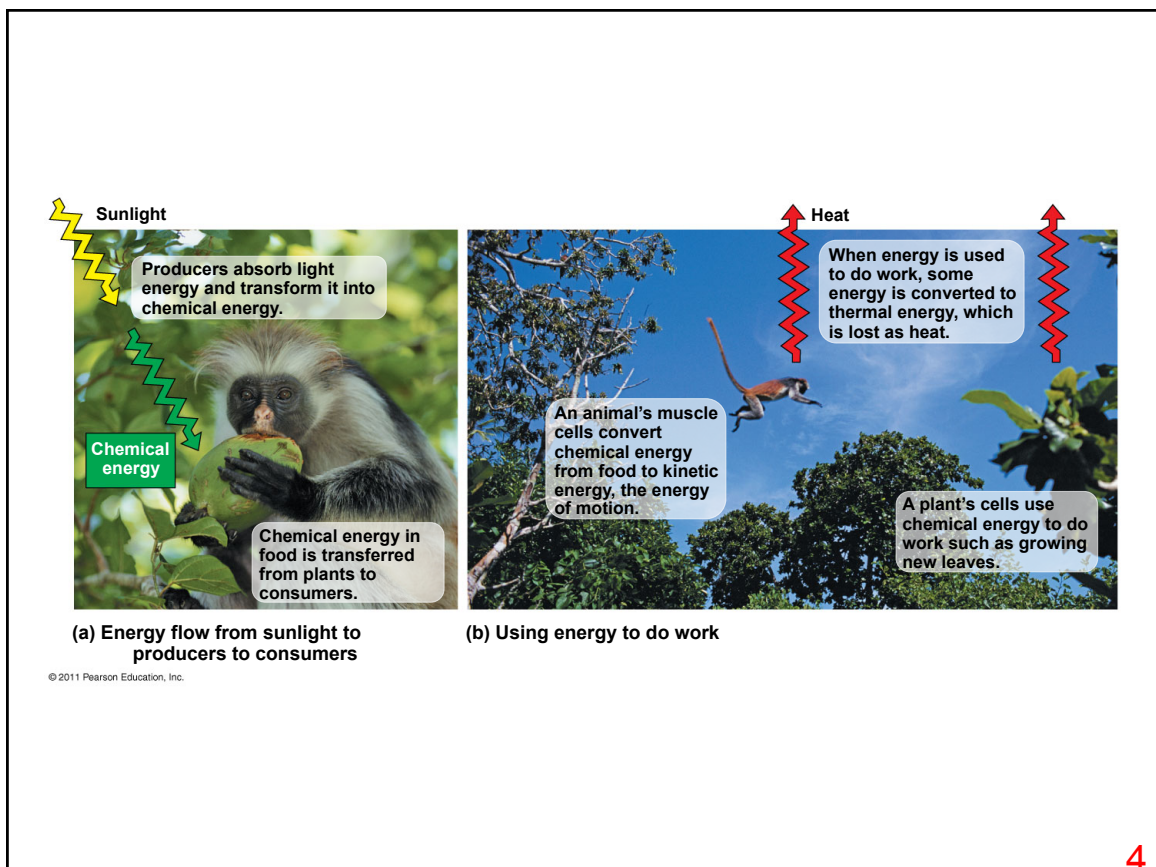
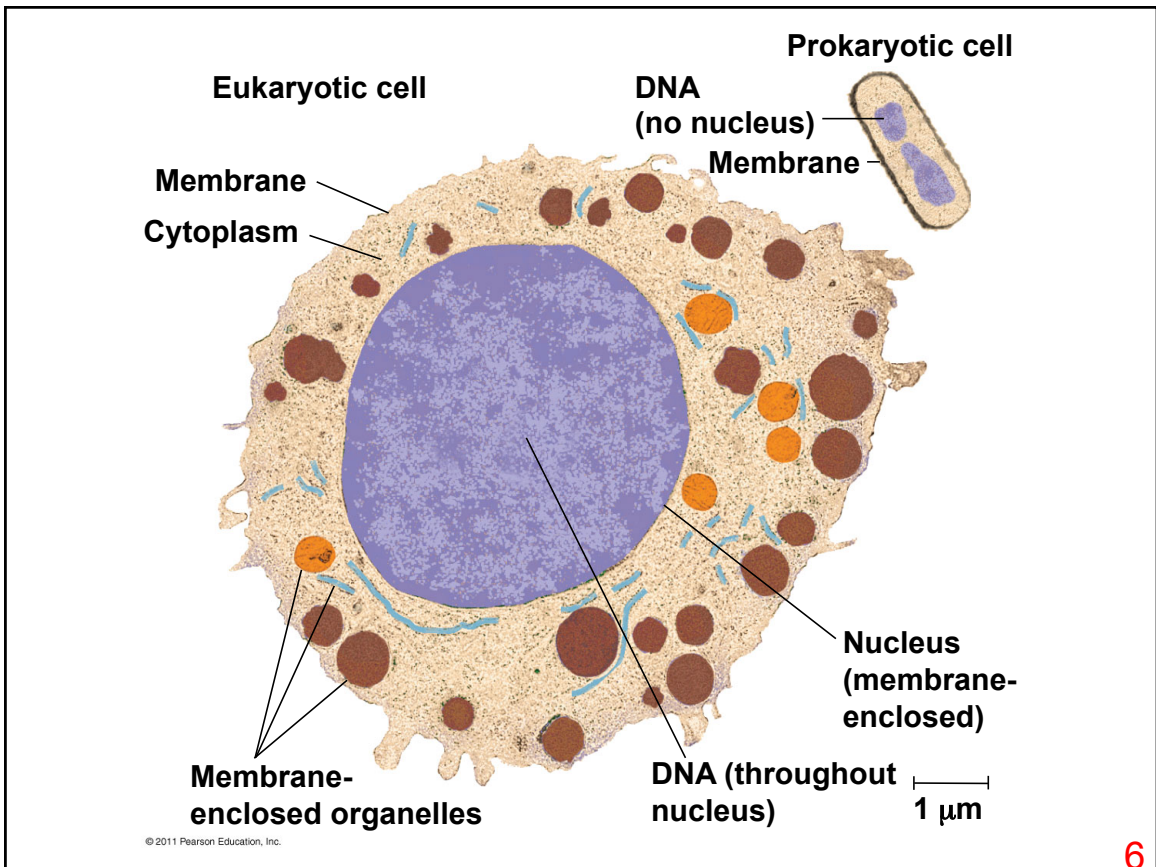
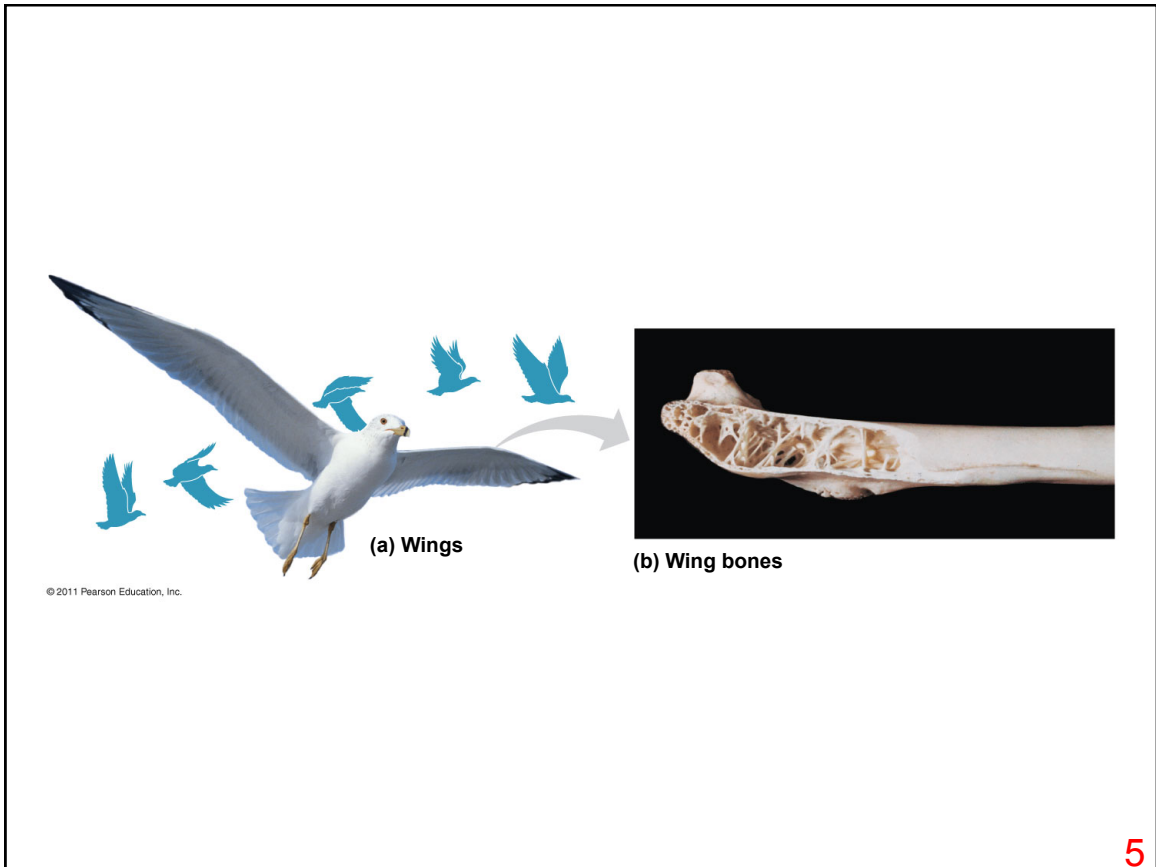
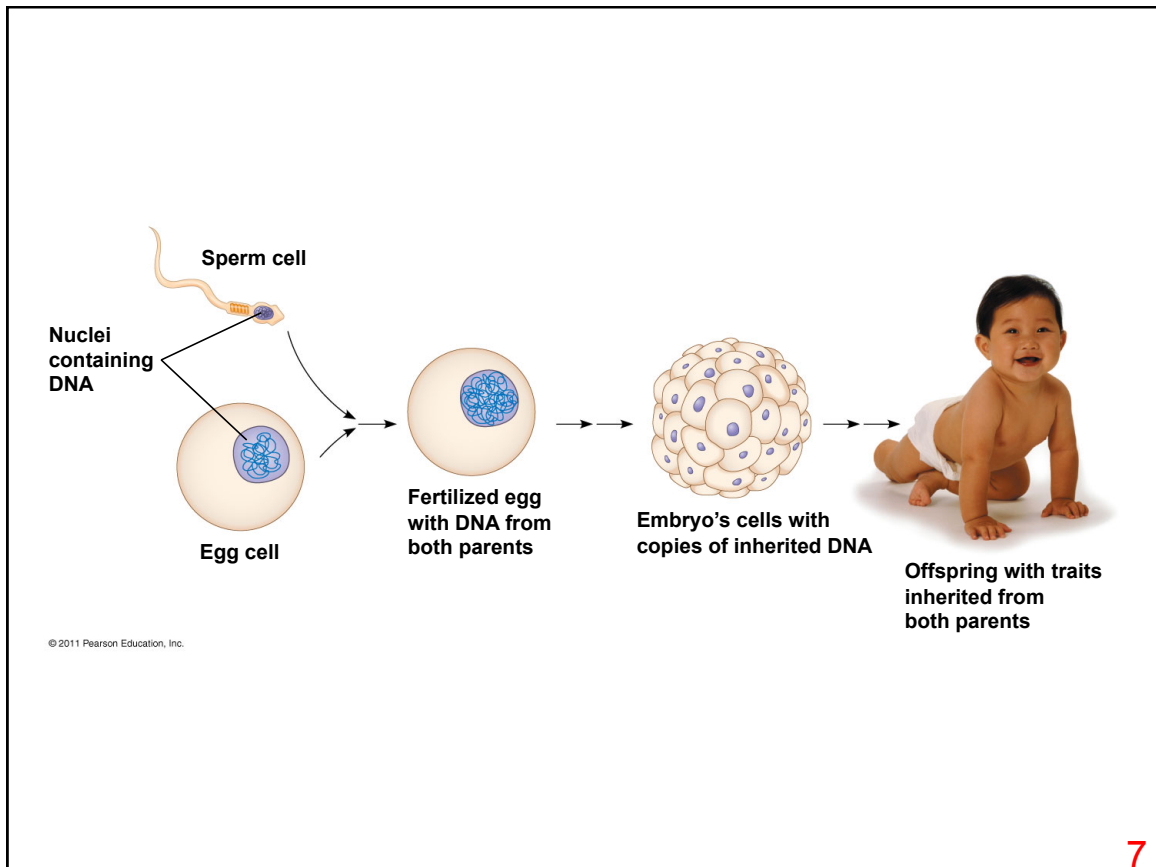


3

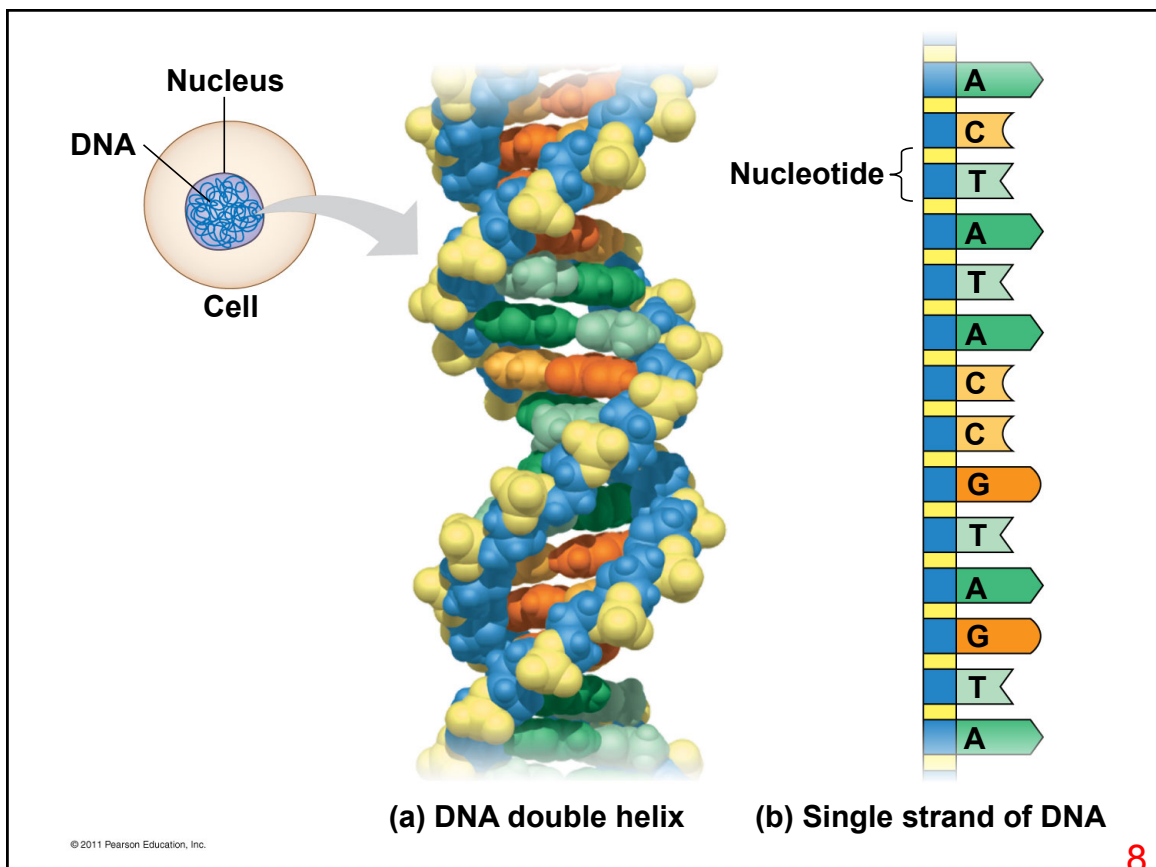


4

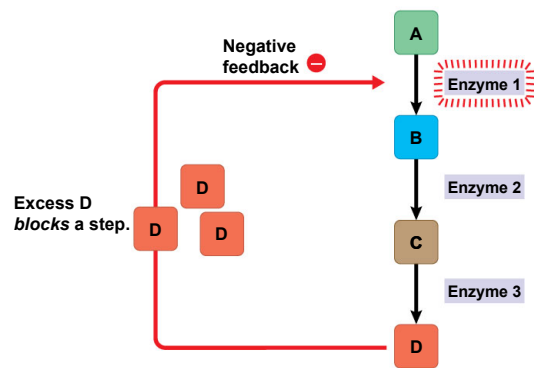




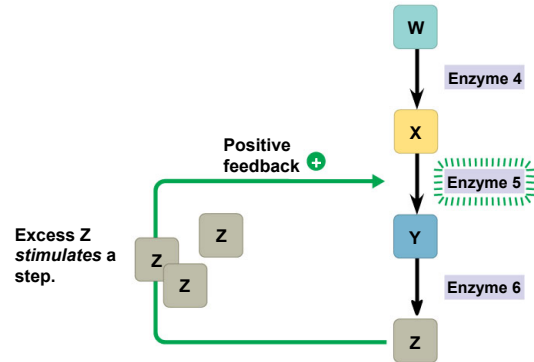
7



8

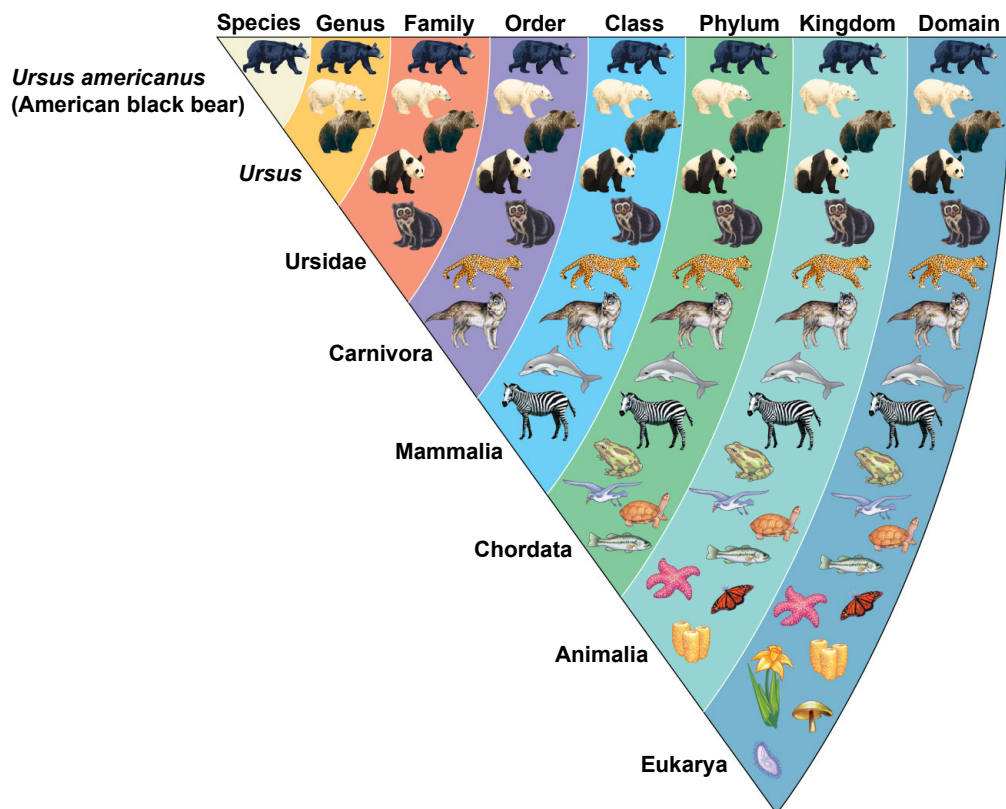


(a) Negative feedback



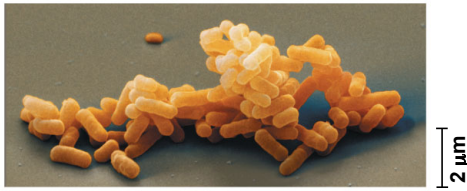
(b) Positive feedback

© 2011 Pearson Education, Inc.



© 2011 Pearson Education, Inc.

(a) Domain Bacteria



(b) Domain Archaea



(c) Domain Eukarya



▶ Kingdom Plantae



▶ Kingdom Fungi



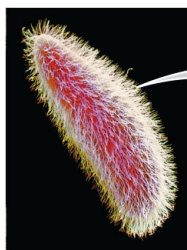
▶ Kingdom Animalia

▶ Protists



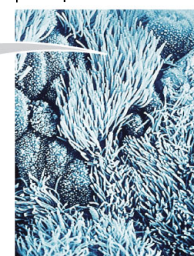
© 2011 Pearson Education, Inc.

15 μm



Cilia of *Paramecium*

5 μm



Cilia of windpipe cells

0.1 μm

Cross section of a cilium, as viewed with an electron microscope

© 2011 Pearson Education, Inc.



1 Population with varied inherited traits



2 Elimination of individuals with certain traits

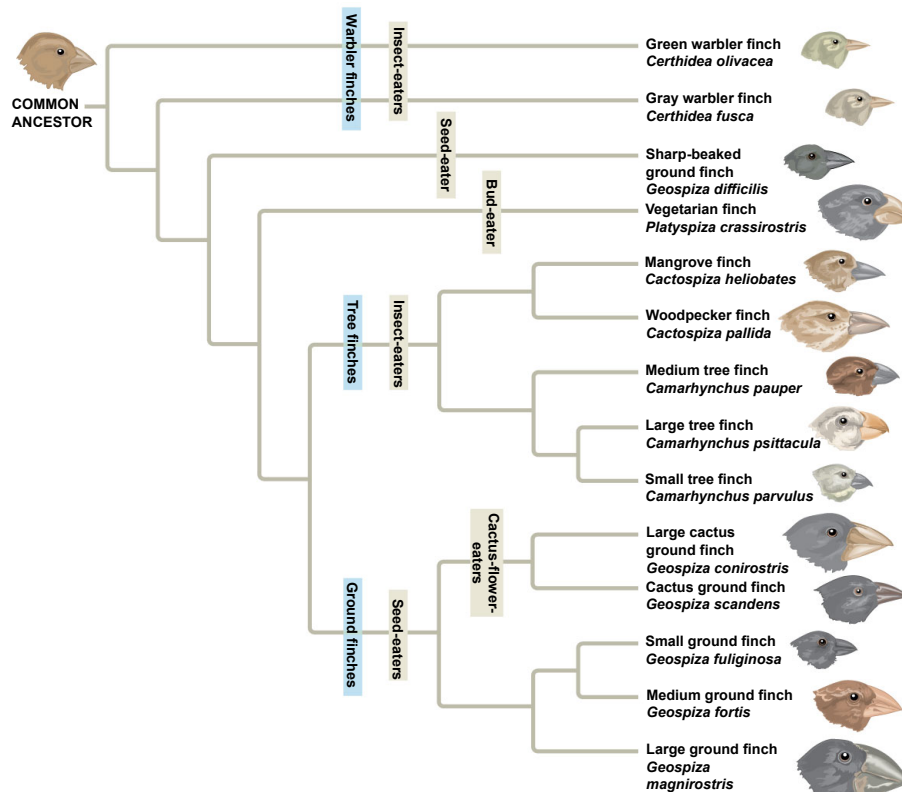


3 Reproduction of survivors

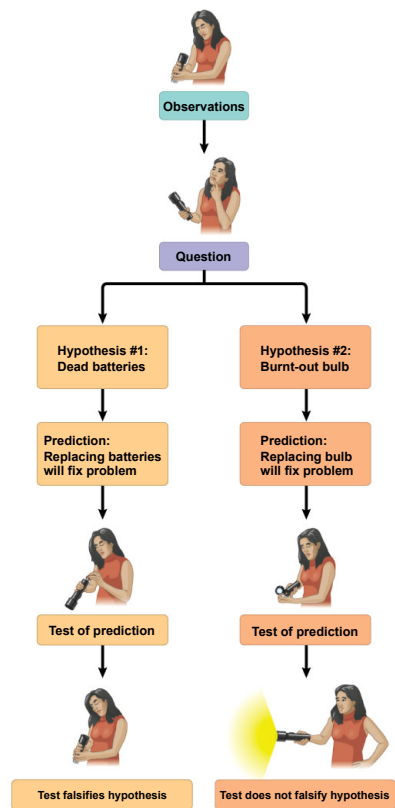


4 Increasing frequency of traits that enhance survival and reproductive success

© 2011 Pearson Education, Inc.



© 2011 Pearson Education, Inc.



© 2011 Pearson Education, Inc.