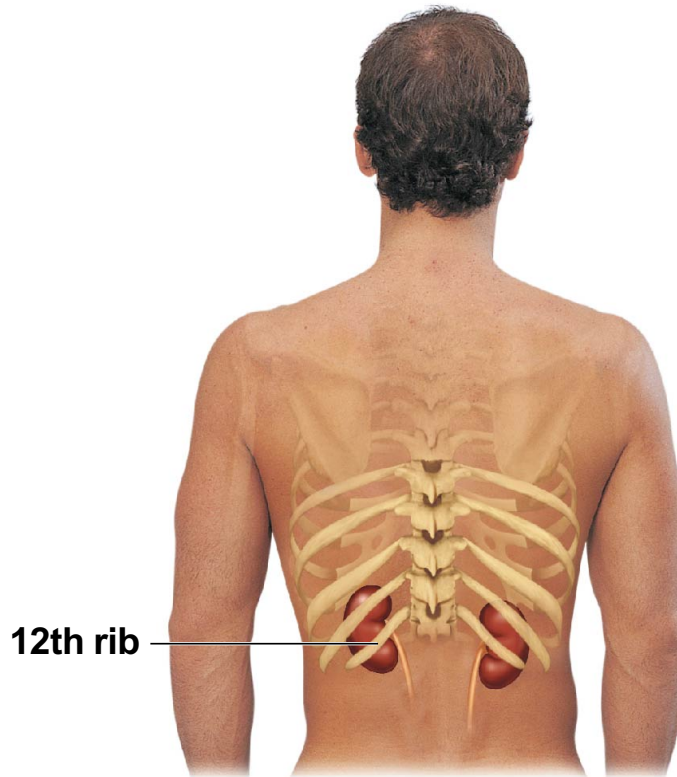
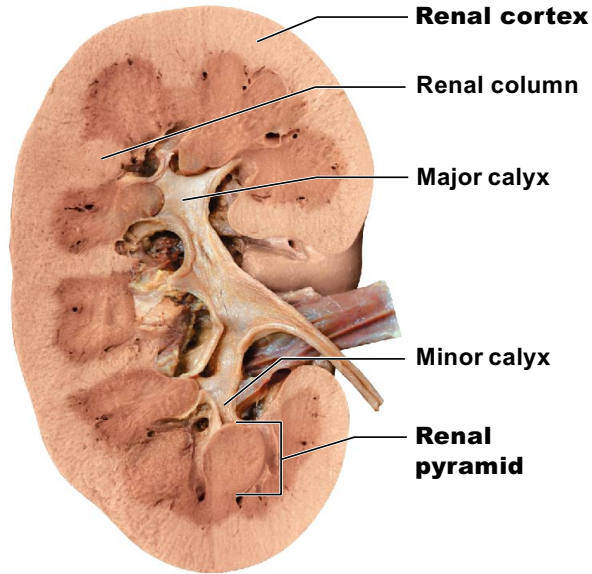
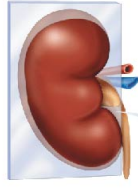


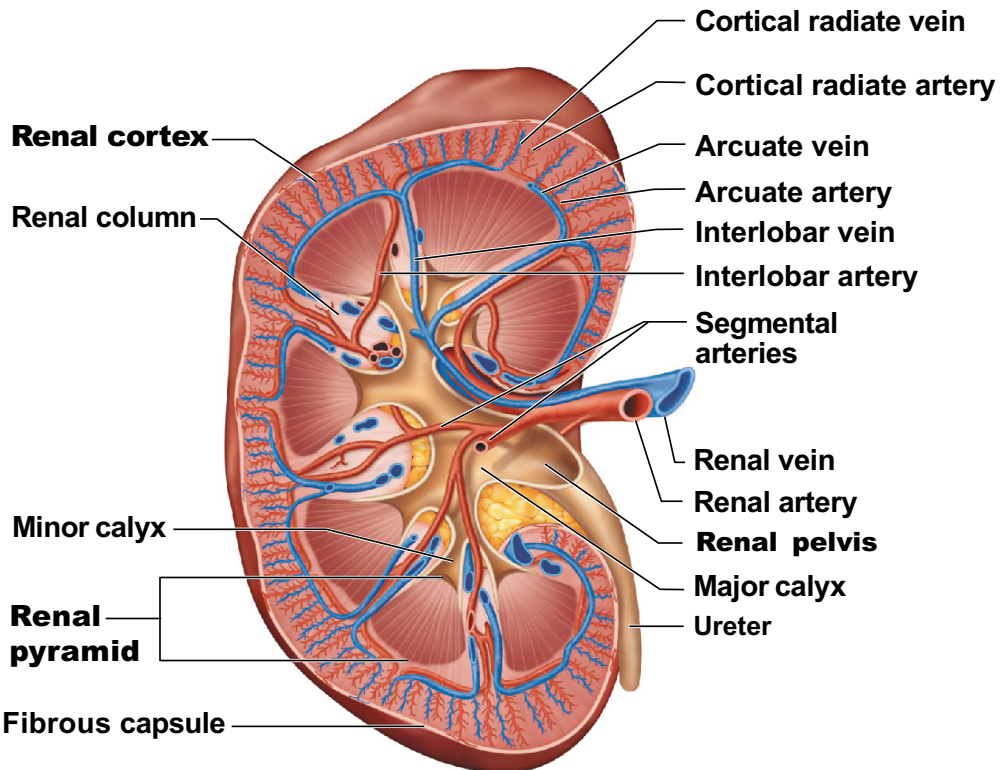
(a)



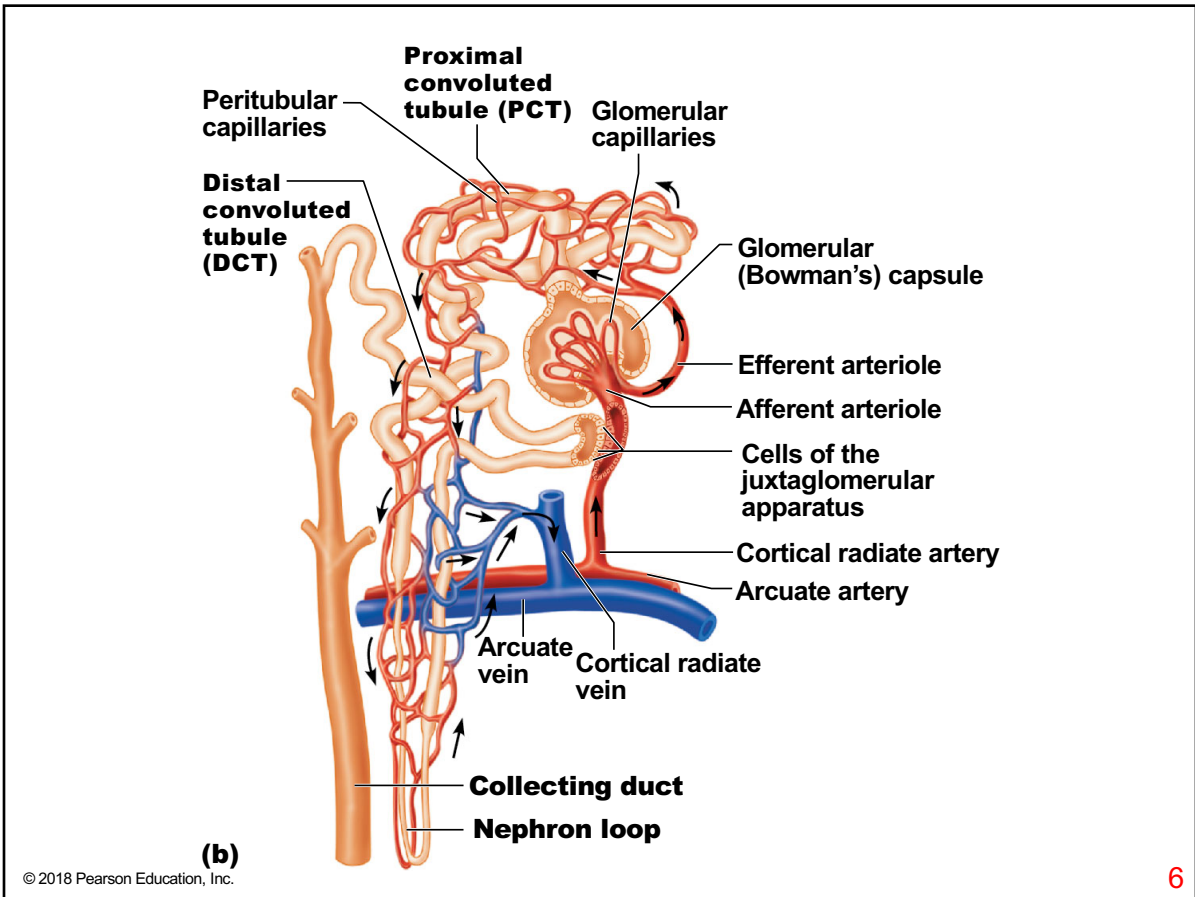
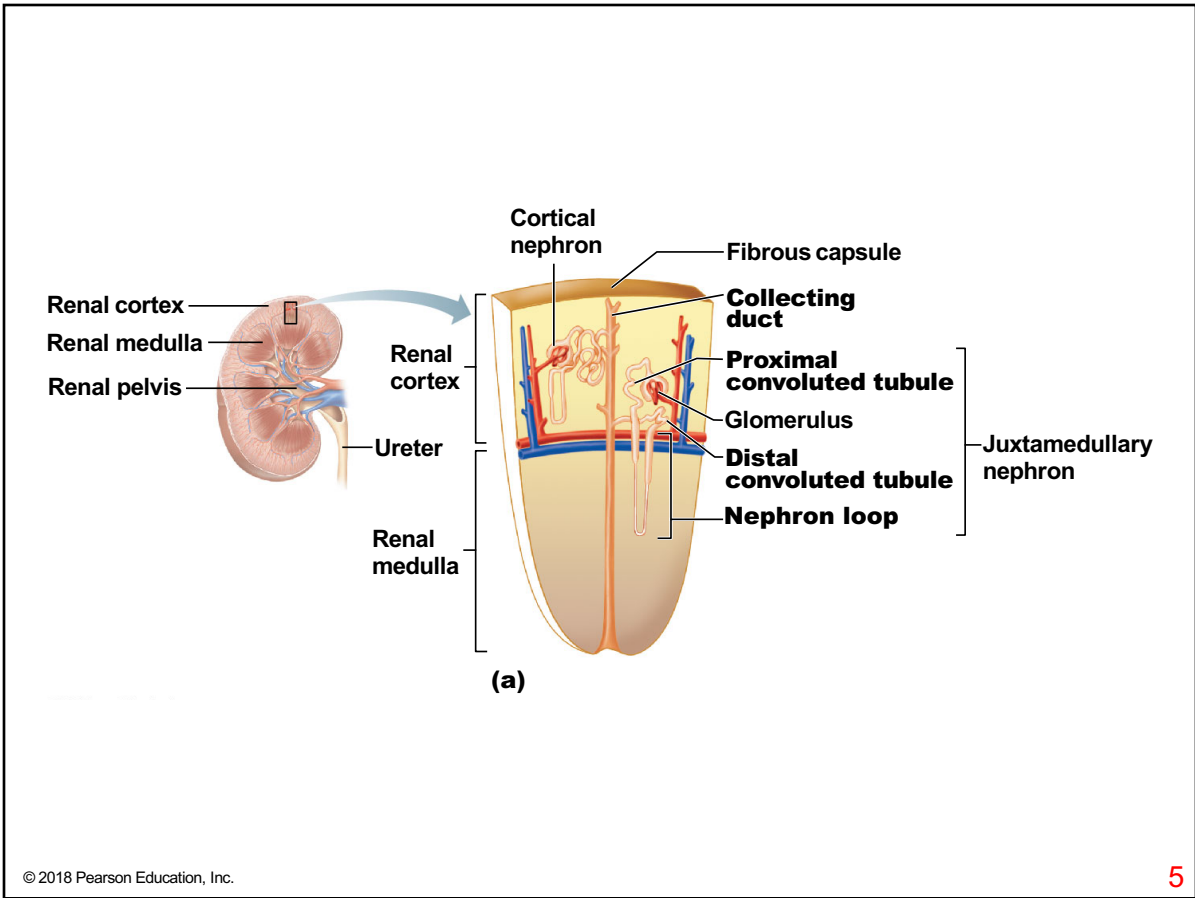
(b)

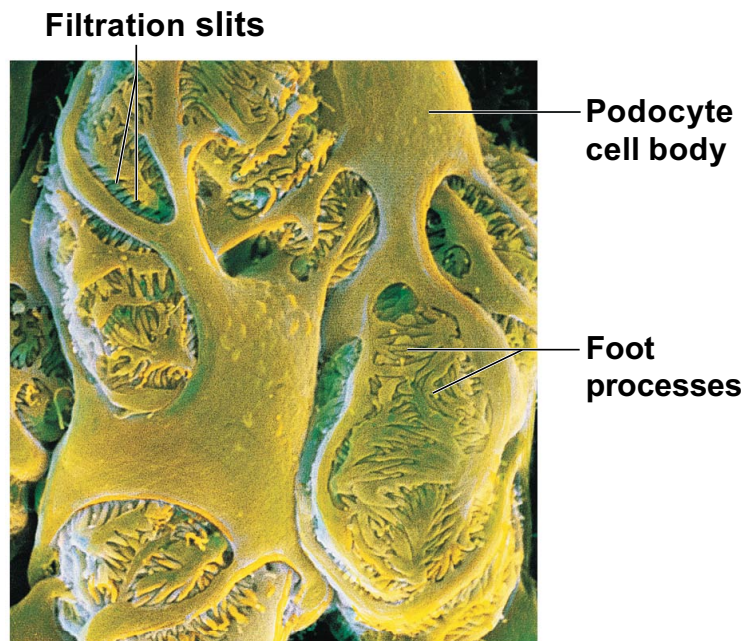
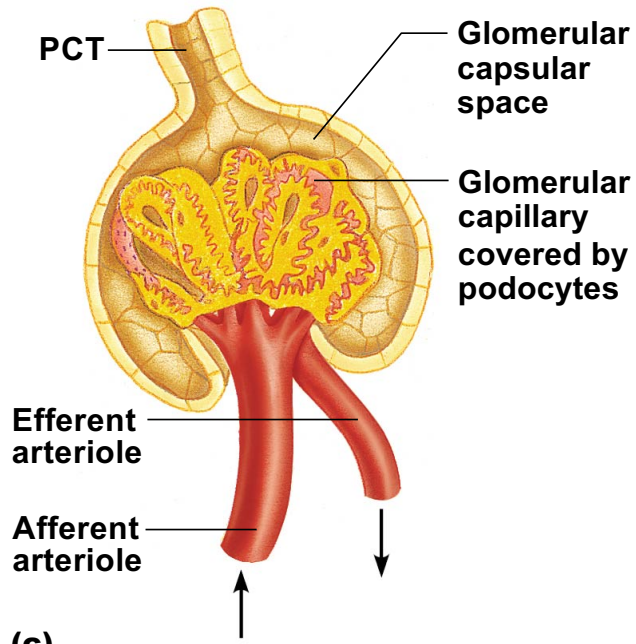


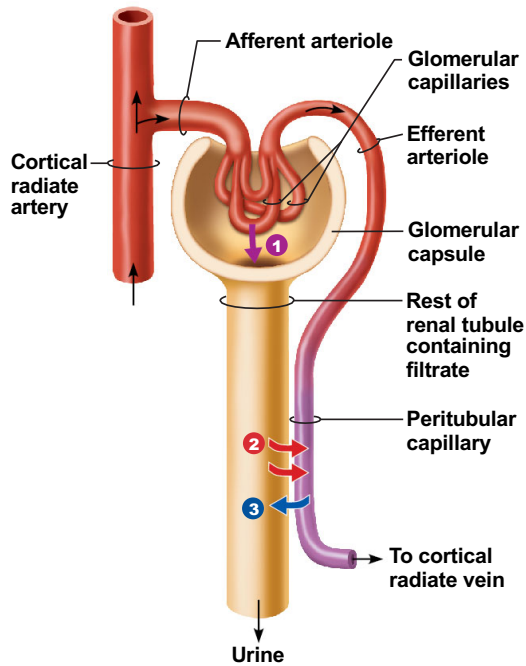
(a)



(b)

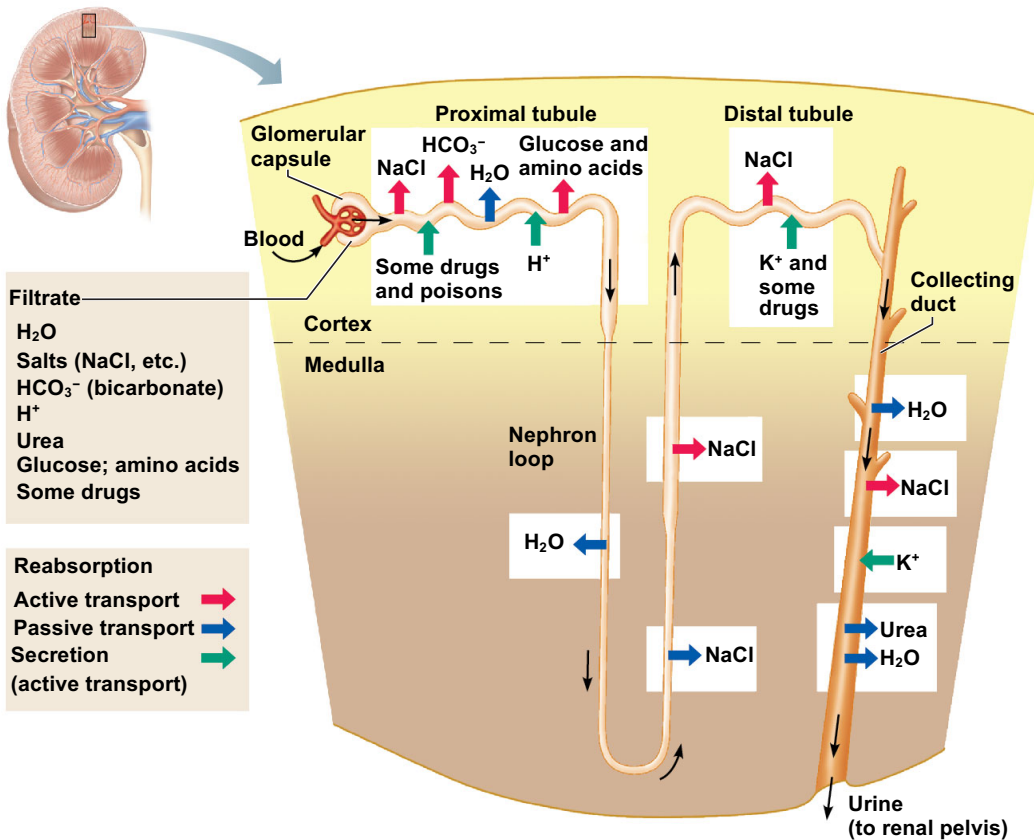


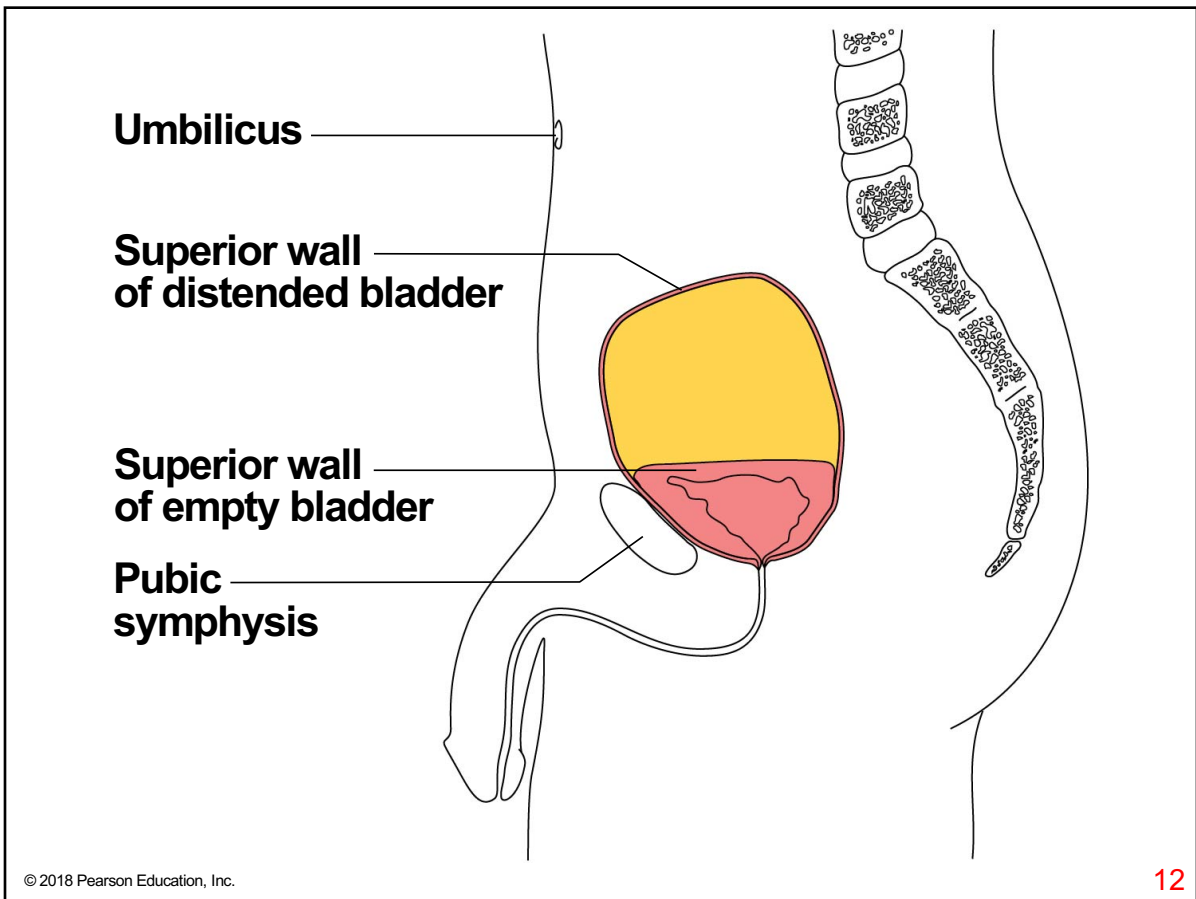
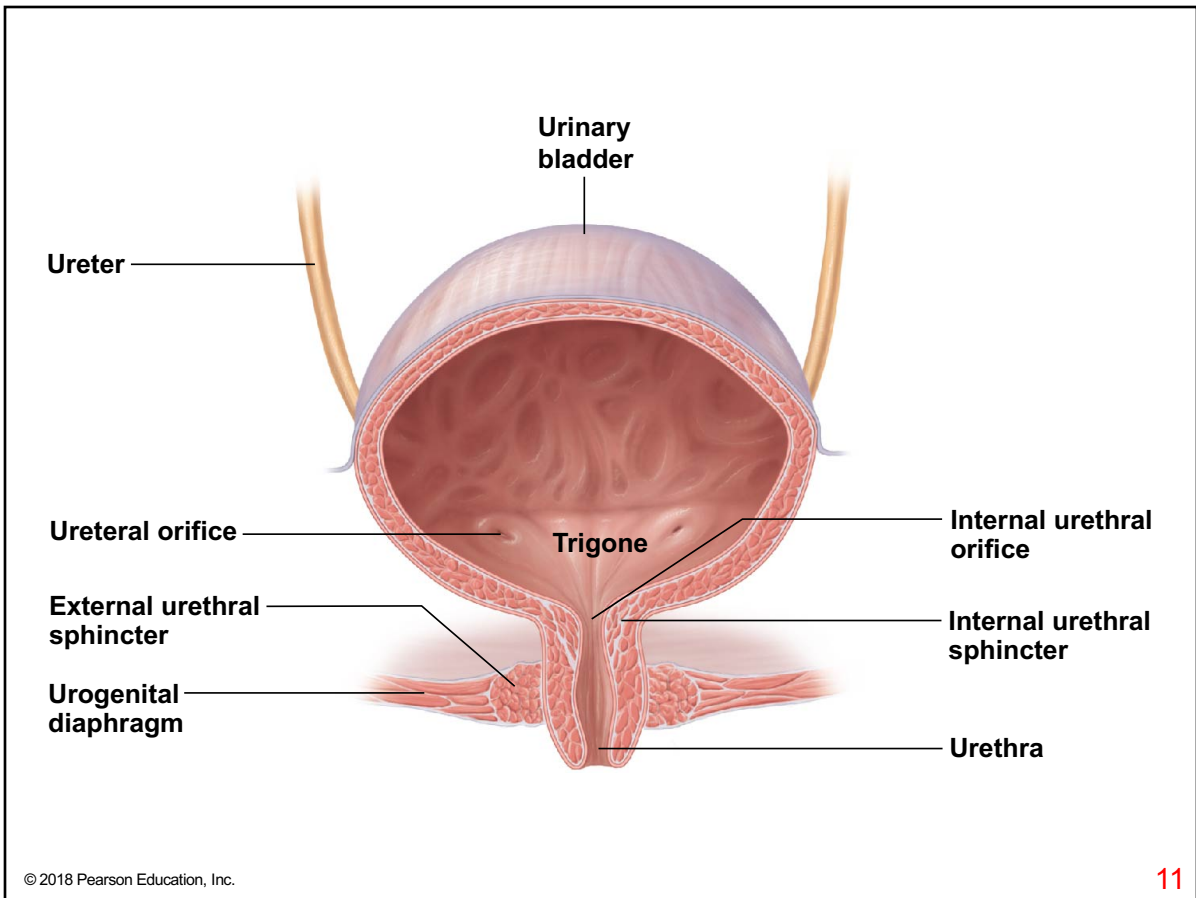




Three major renal processes:

- 1 → **Glomerular filtration:** Water and solutes smaller than proteins are forced through the capillary walls and pores of the glomerular capsule into the renal tubule.
- 2 → **Tubular reabsorption:** Water, glucose, amino acids, and needed ions are transported out of the filtrate into the tubule cells and then enter the capillary blood.
- 3 → **Tubular secretion:** H^+ , K^+ , creatinine, and drugs are removed from the peritubular blood and secreted by the tubule cells into the filtrate.

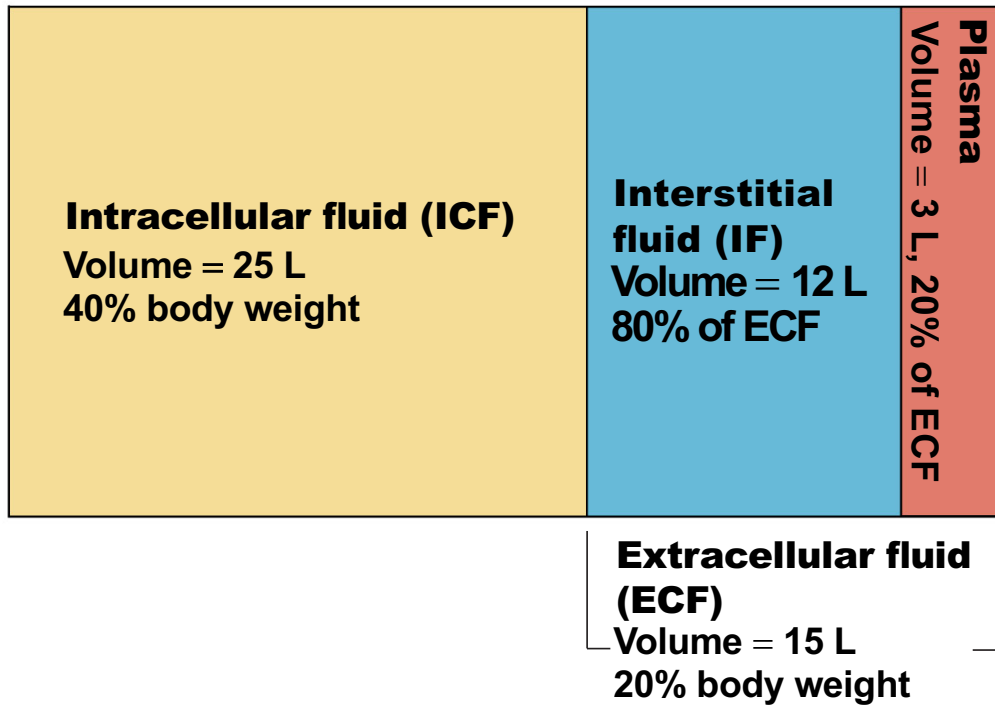




Total body water

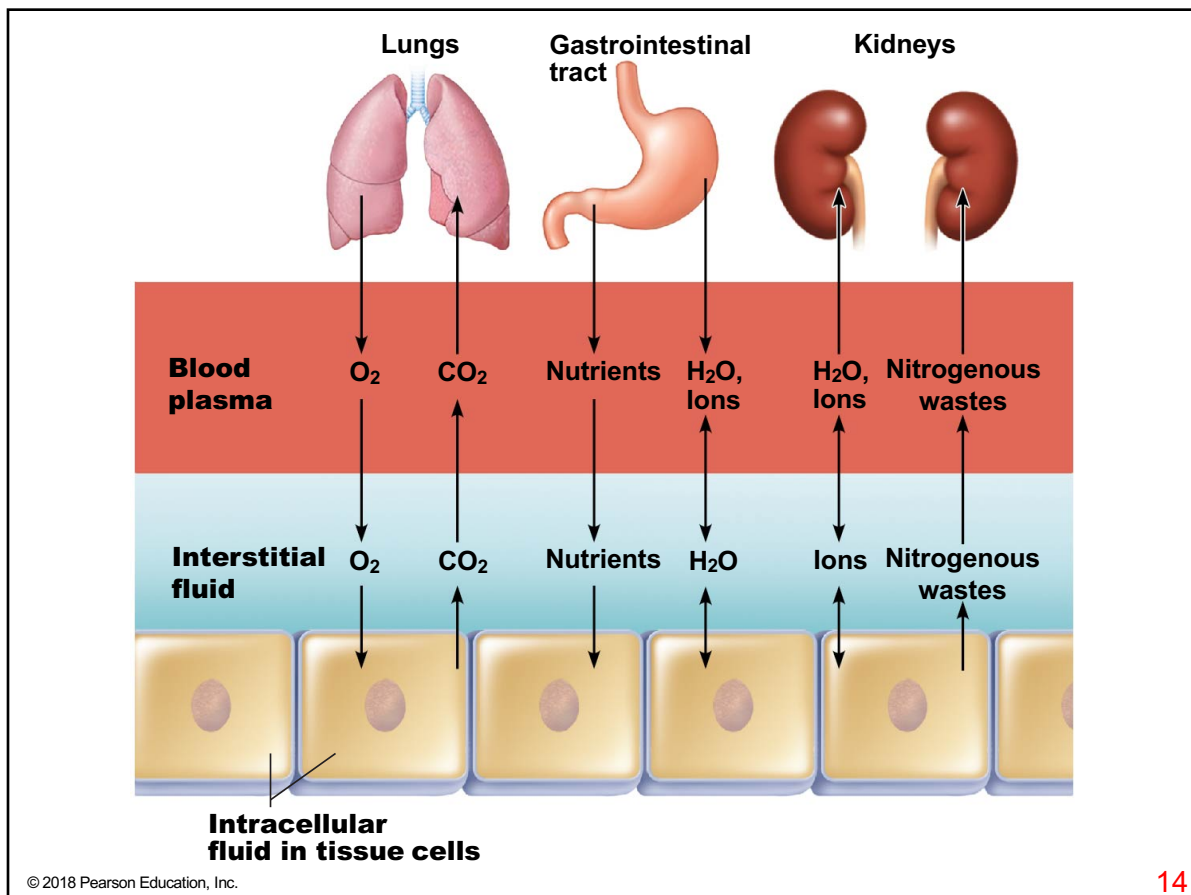
Volume = 40 L

60% body weight



© 2018 Pearson Education, Inc.

13



© 2018 Pearson Education, Inc.

14

