

**Site where  
conjunctiva  
merges with  
cornea**

**Palpebral  
fissure**

**Lateral  
commissure  
(canthus)**

**Iris**

**Eyelid**

**Eyebrow**

**Eyelid**

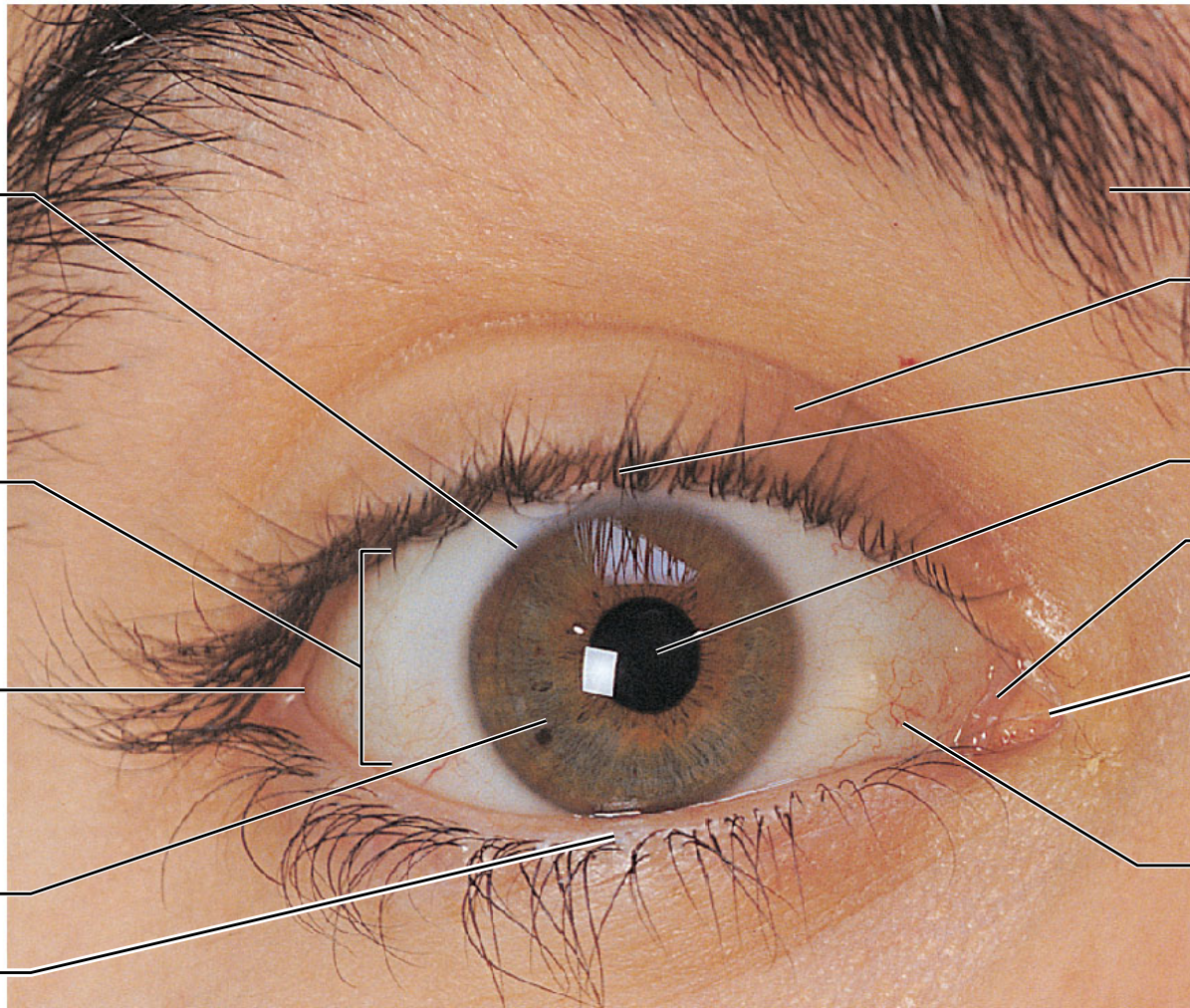
**Eyelashes**

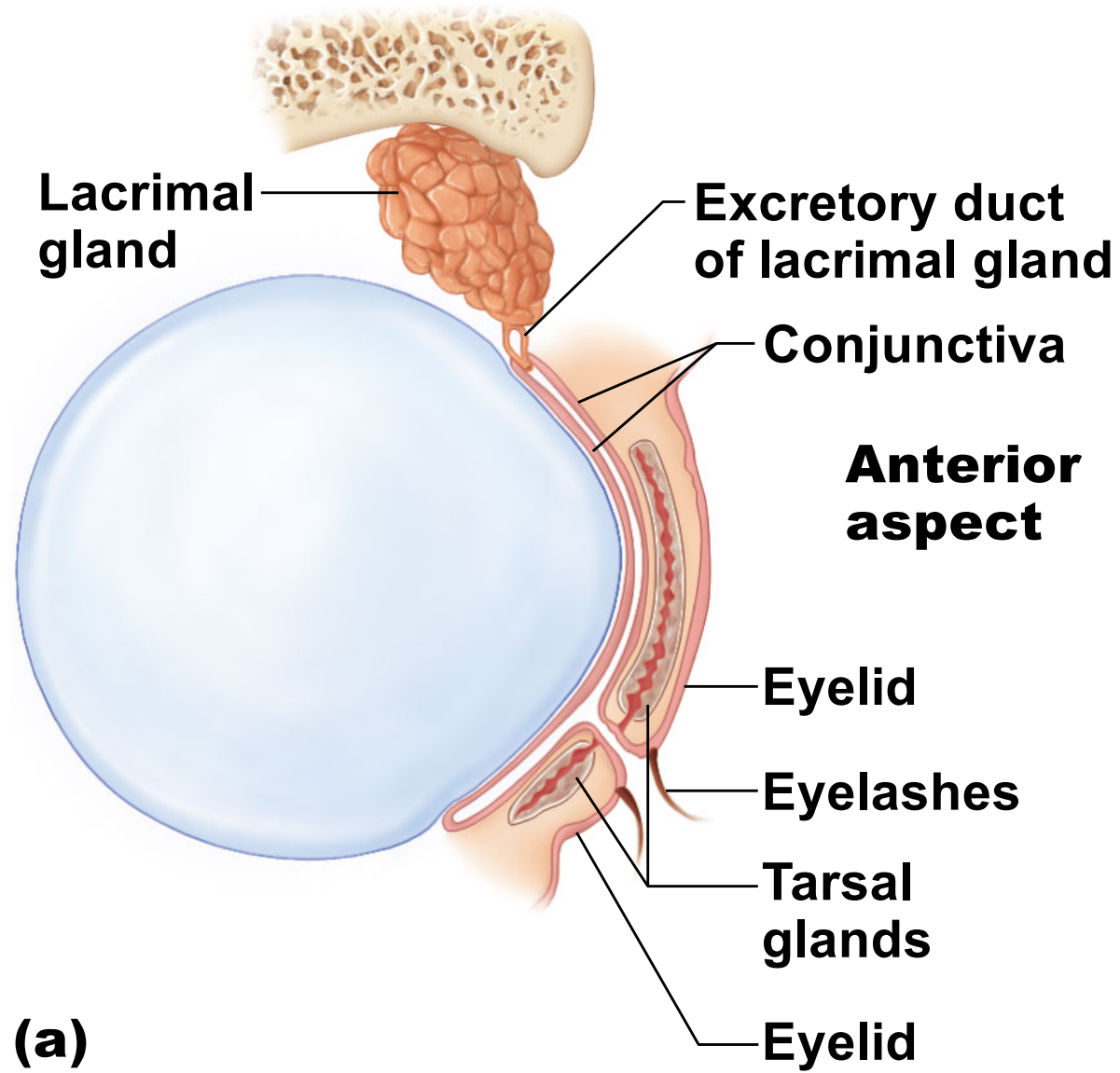
**Pupil**

**Lacrimal  
caruncle**

**Medial  
commissure  
(canthus)**

**Sclera  
(covered by  
conjunctiva)**





**Lacrimal gland**

**Excretory ducts of lacrimal gland**

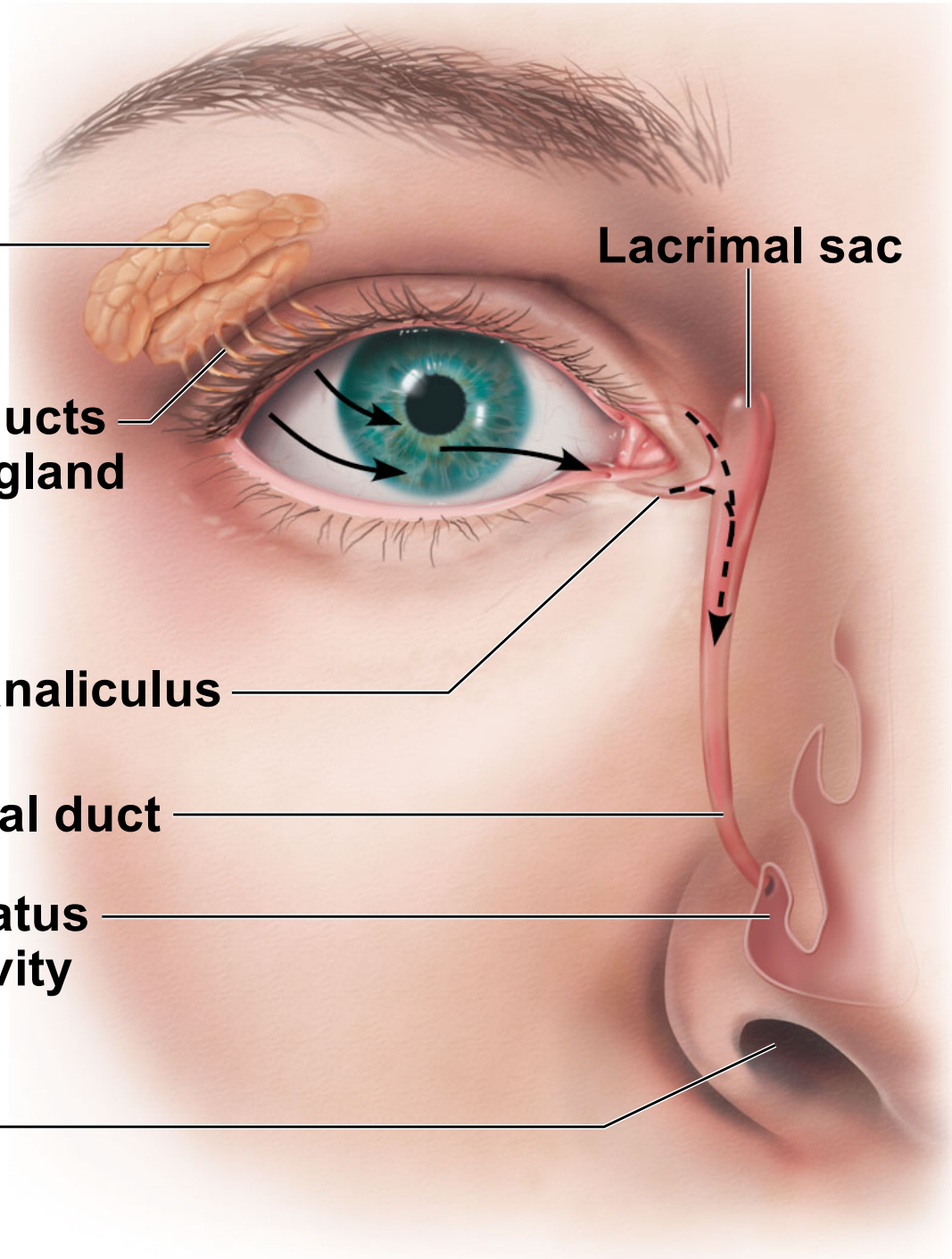
**Lacrimal canaliculus**

**Nasolacrimal duct**

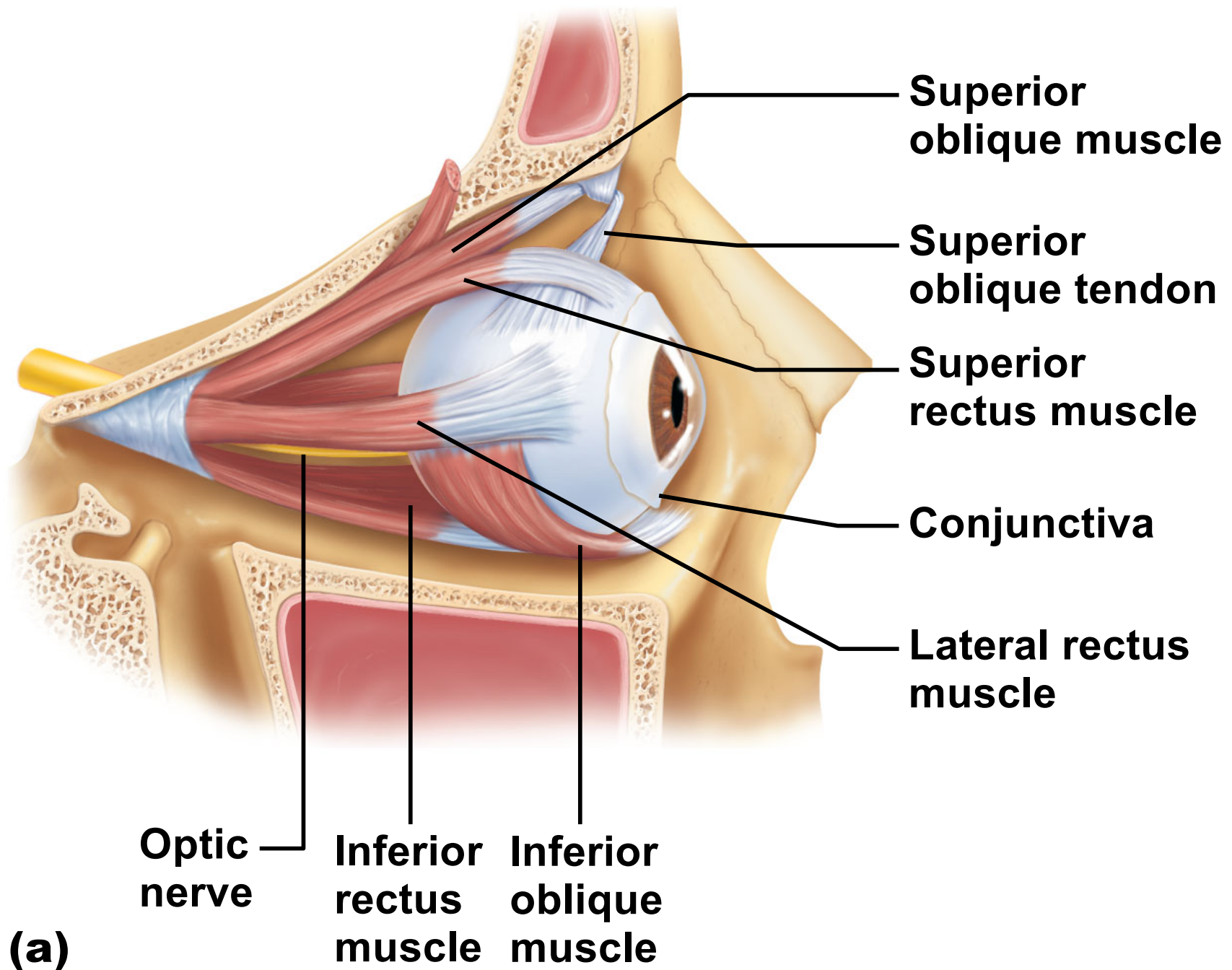
**Inferior meatus of nasal cavity**

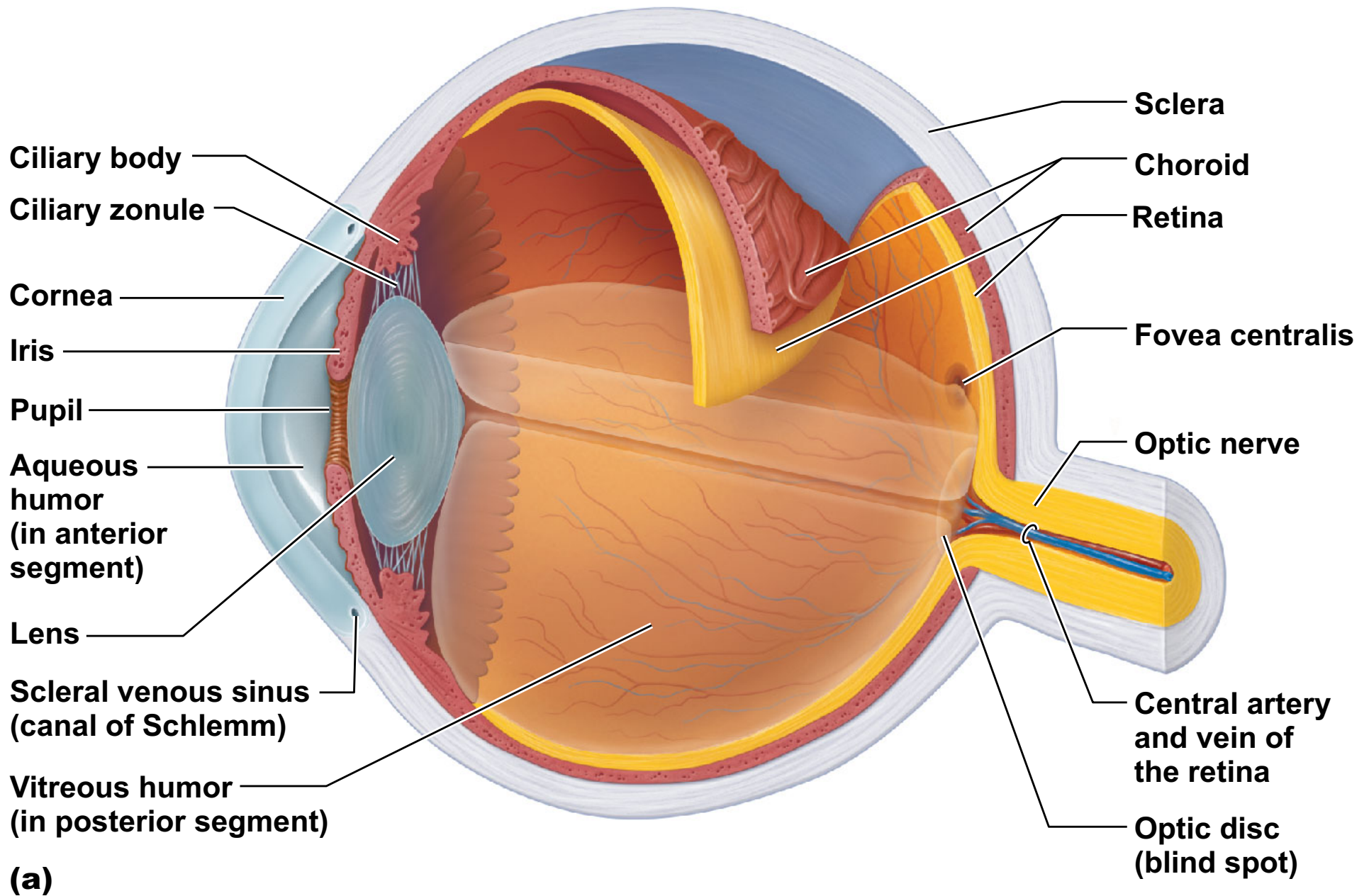
**Nostril**

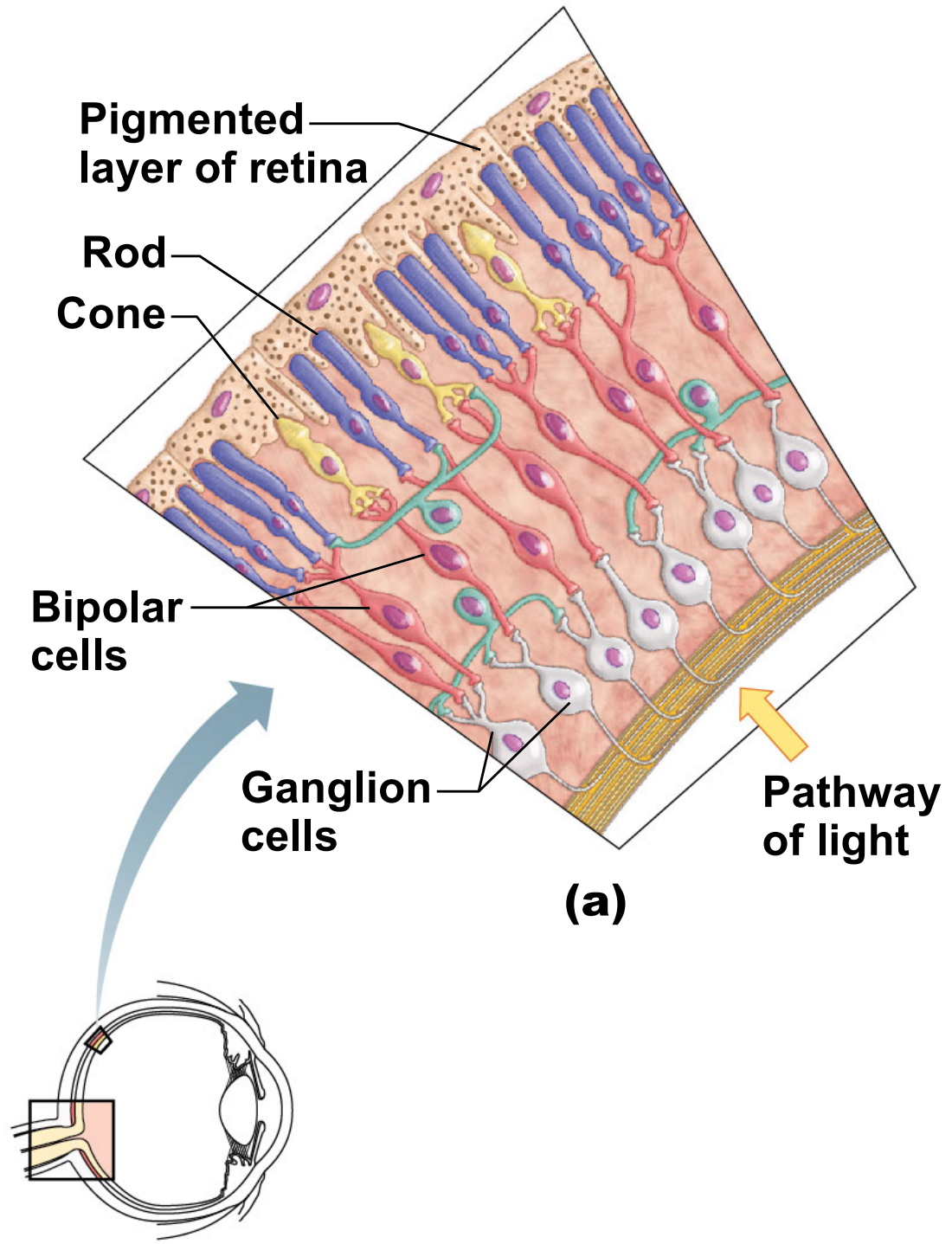
**Lacrimal sac**

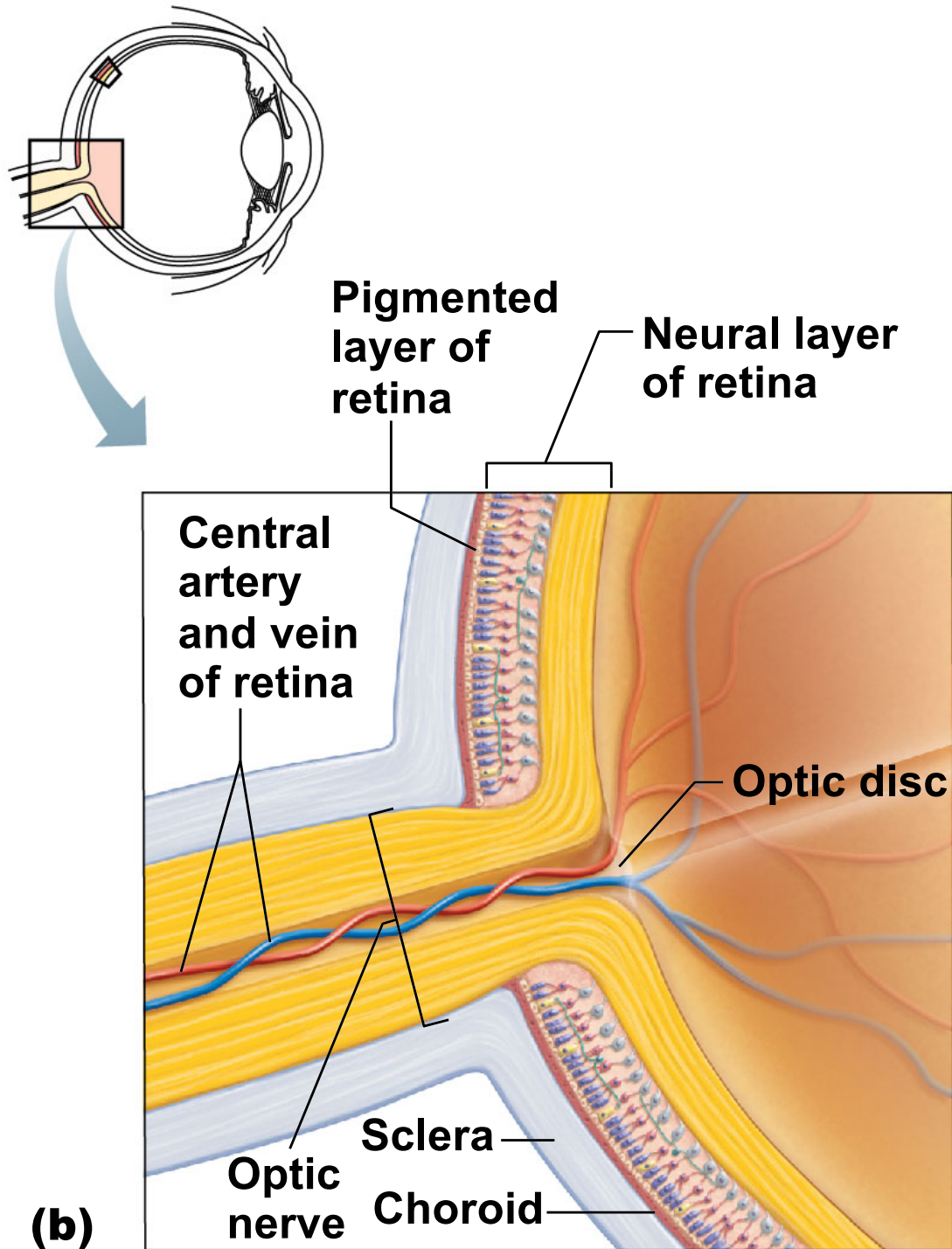


**(b)**

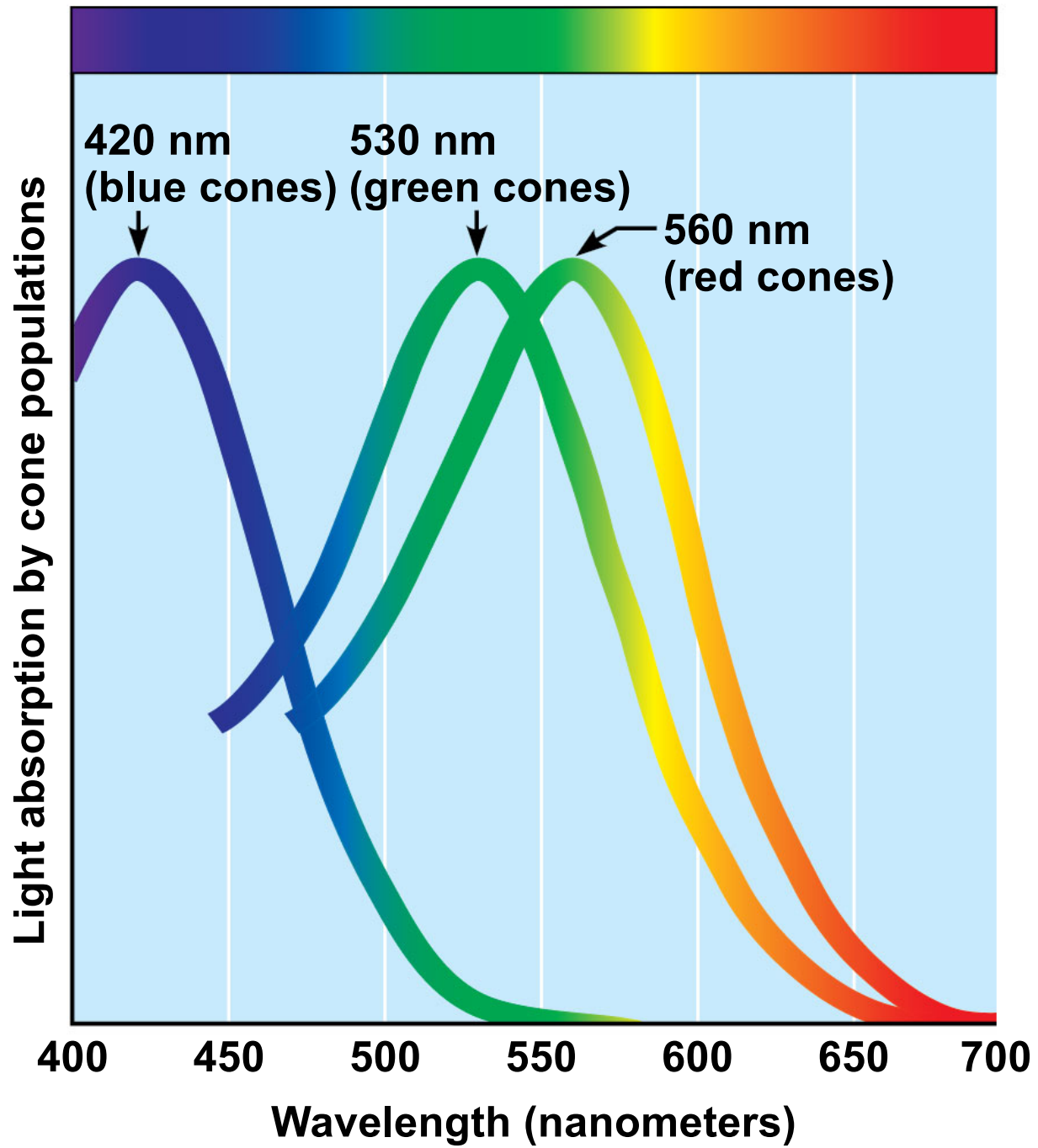




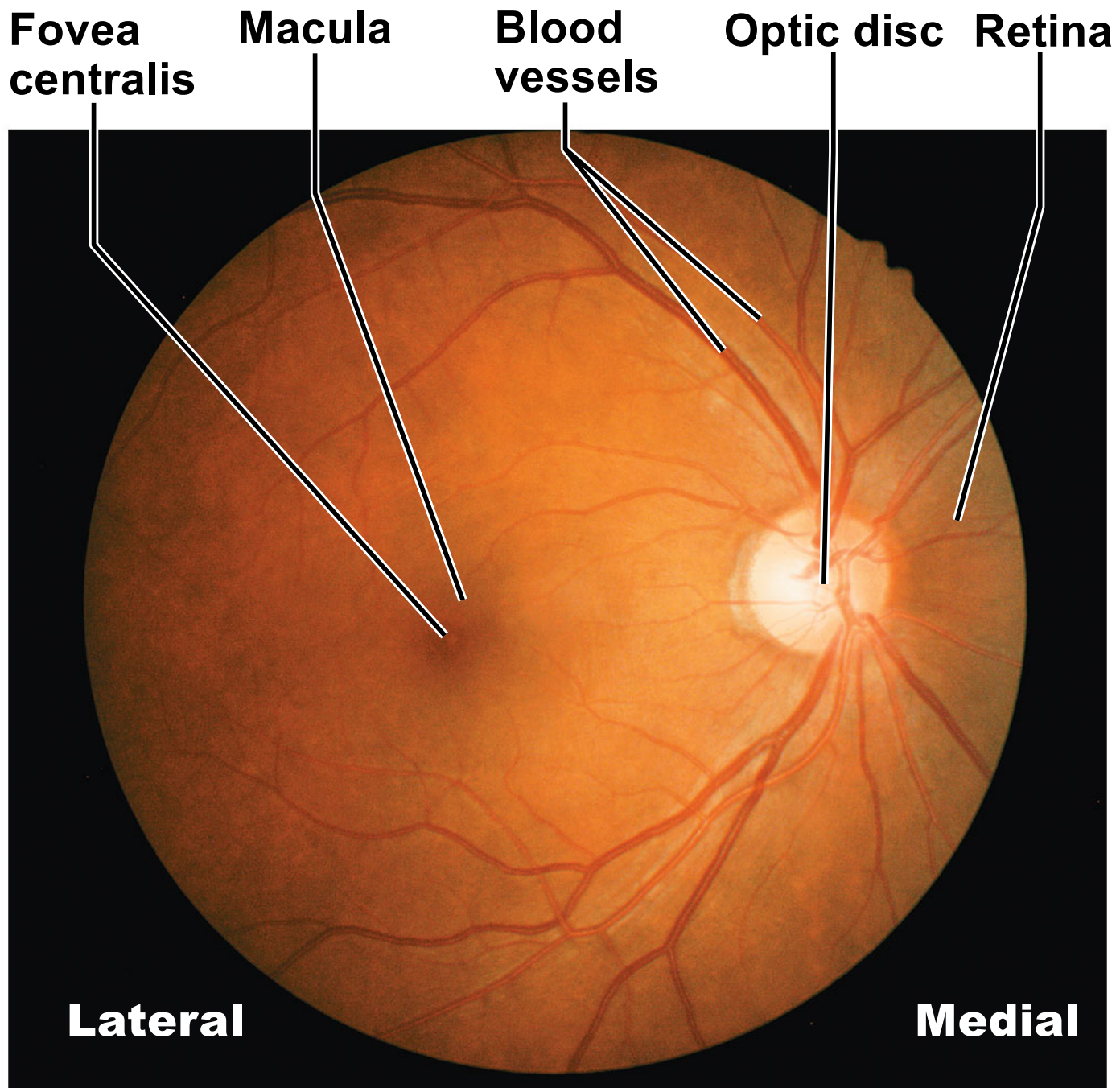


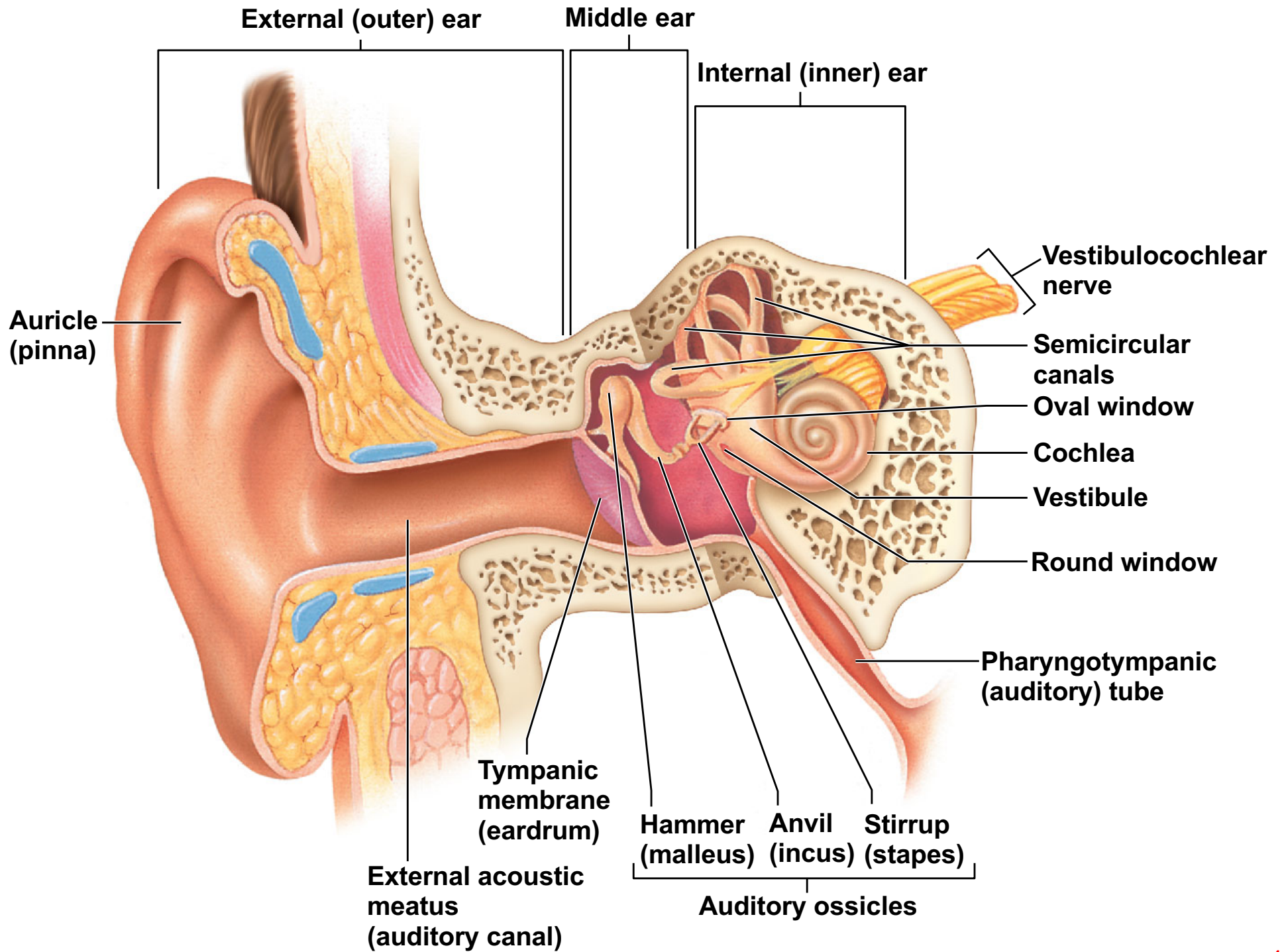


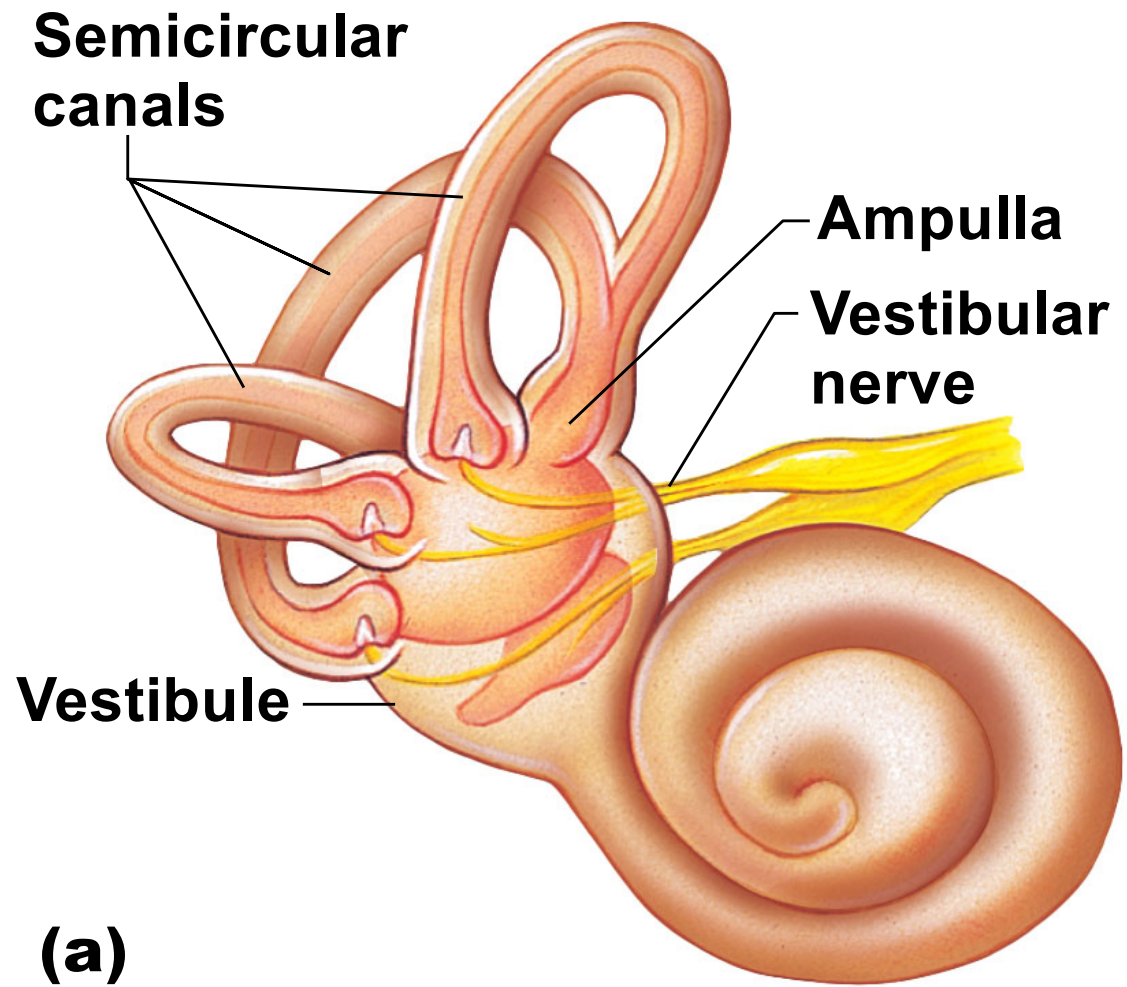
# Visible light

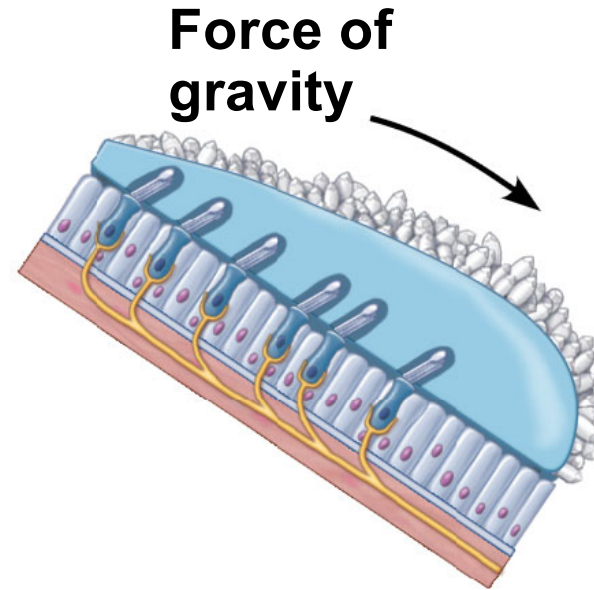
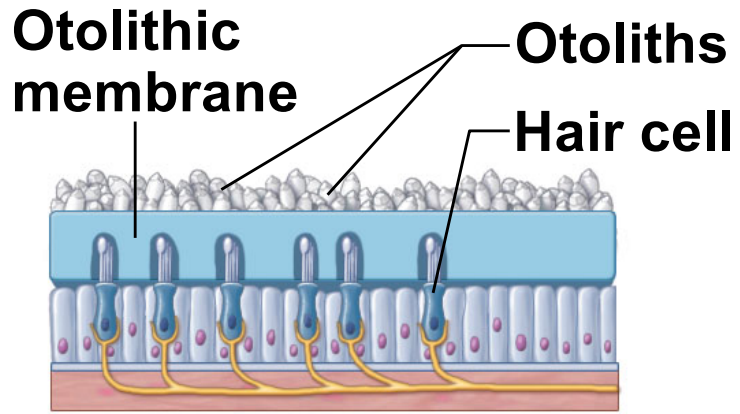










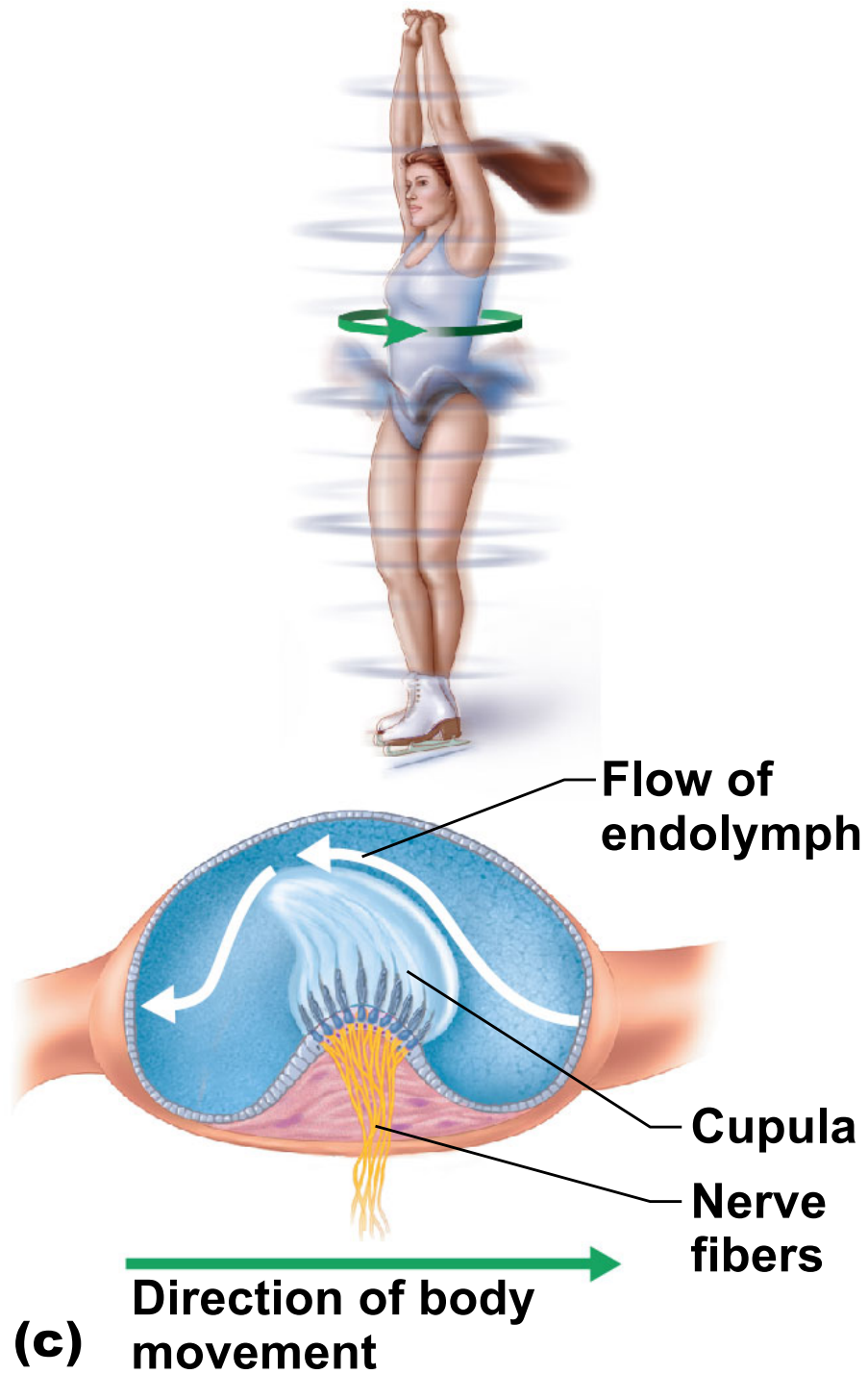


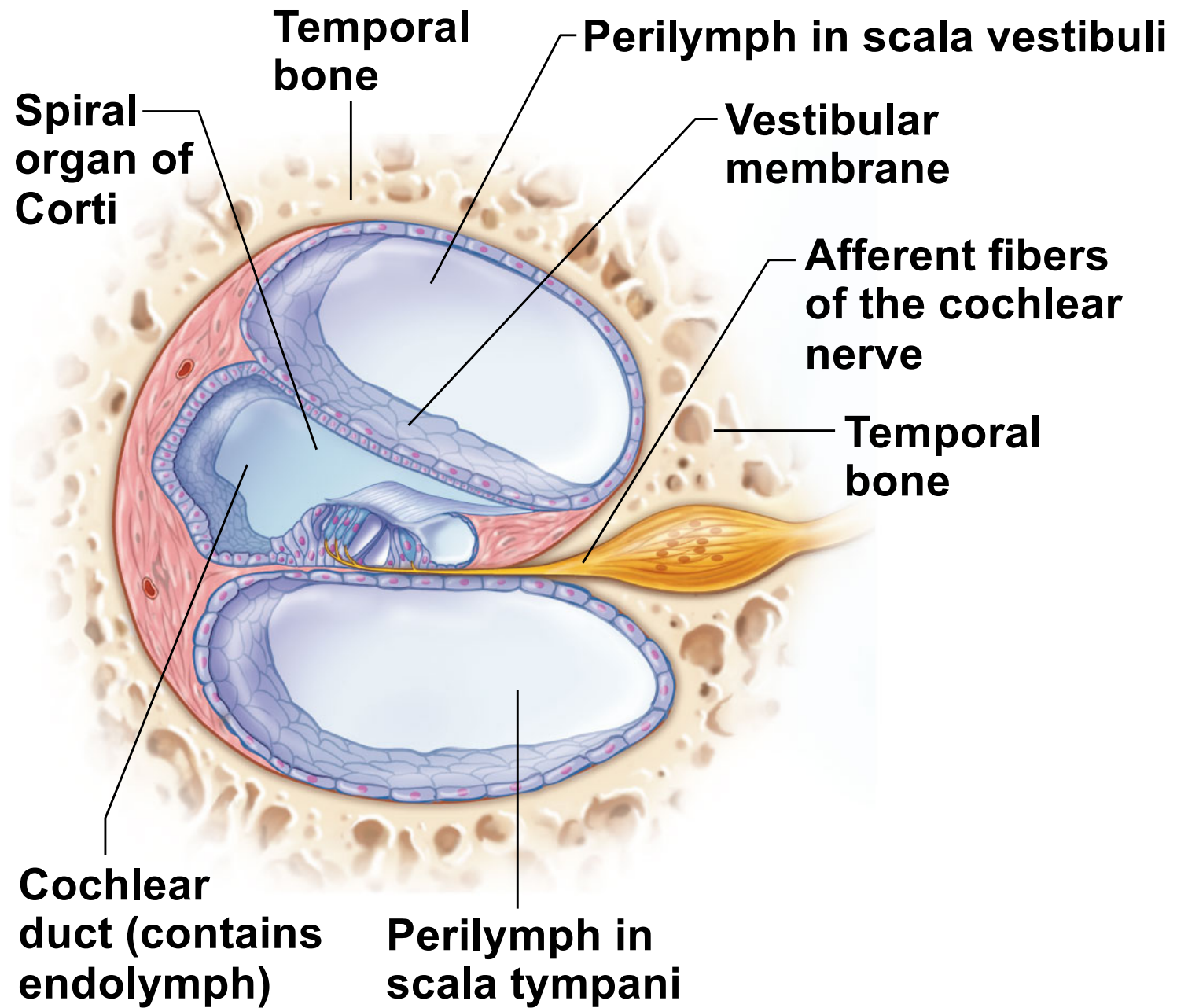
**Head upright**



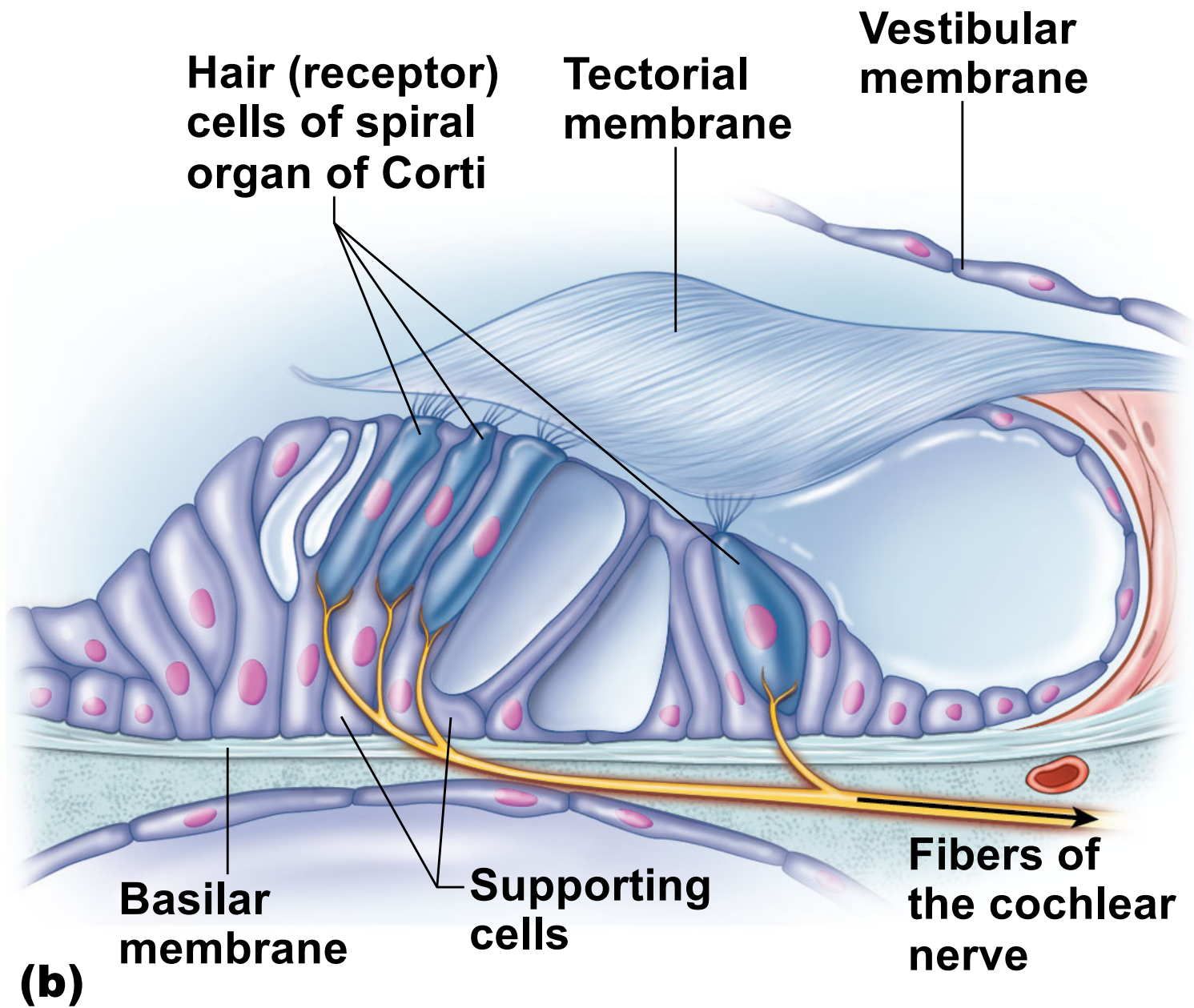
**Head tilted**

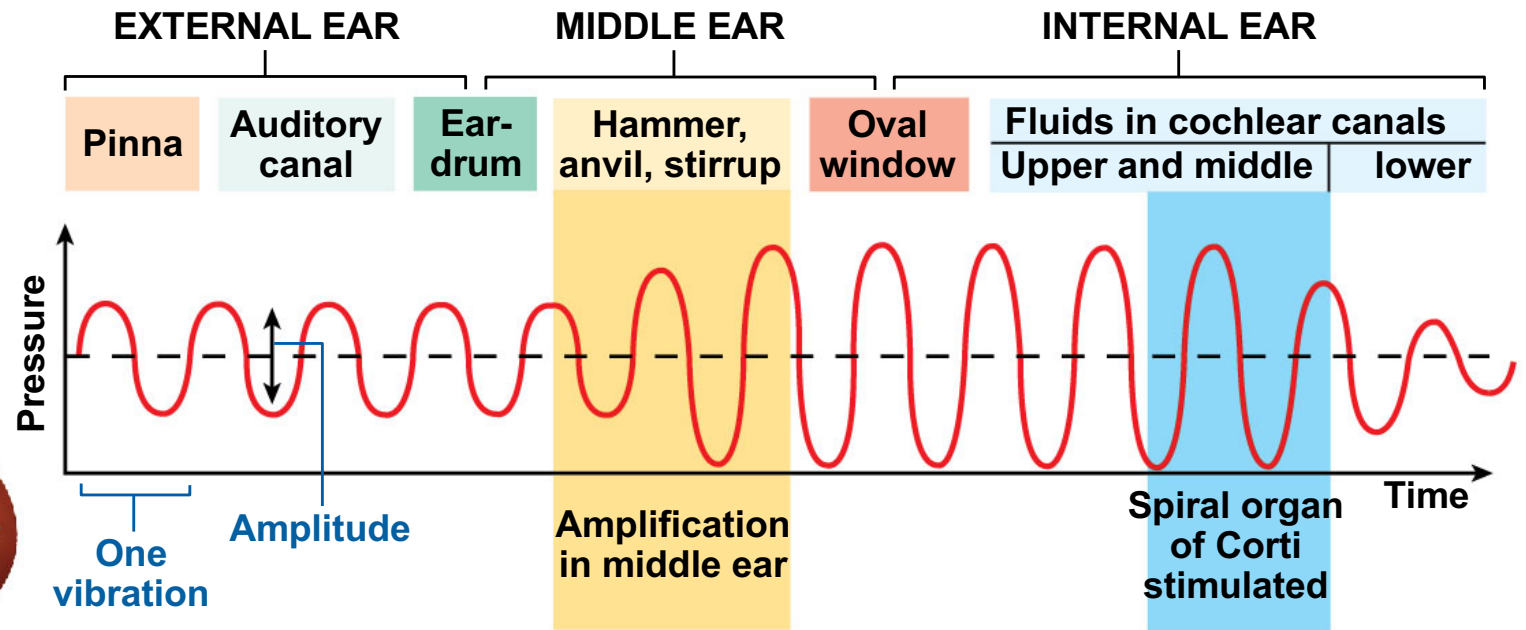
**(b)**



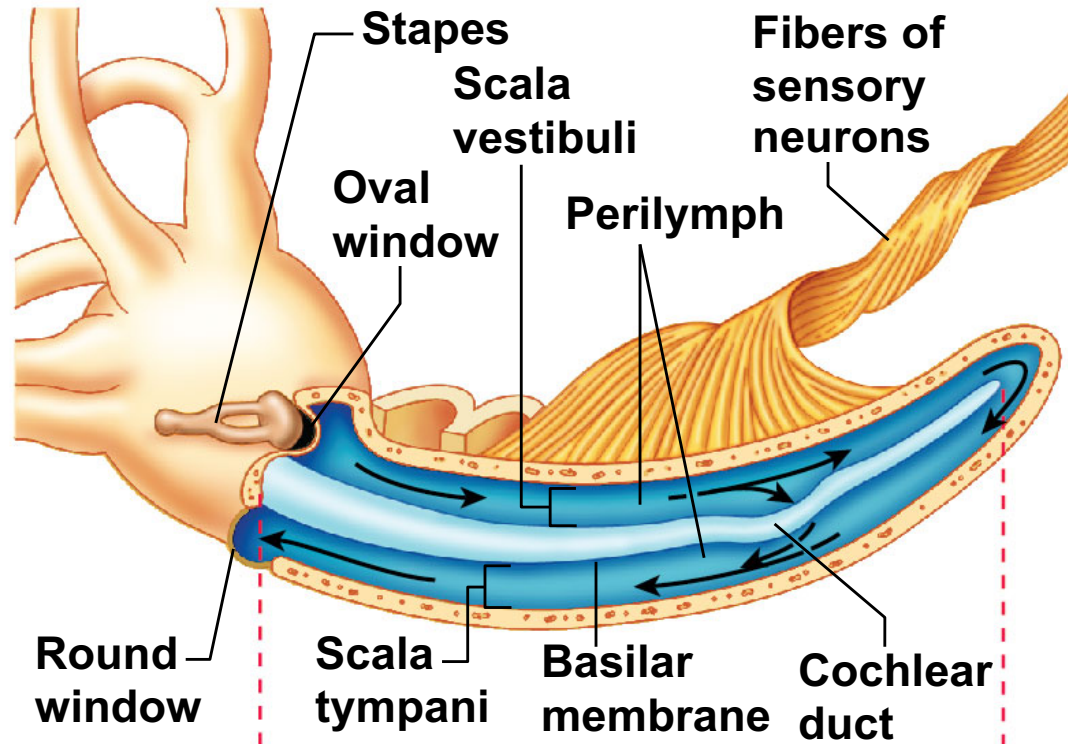


**(a)**

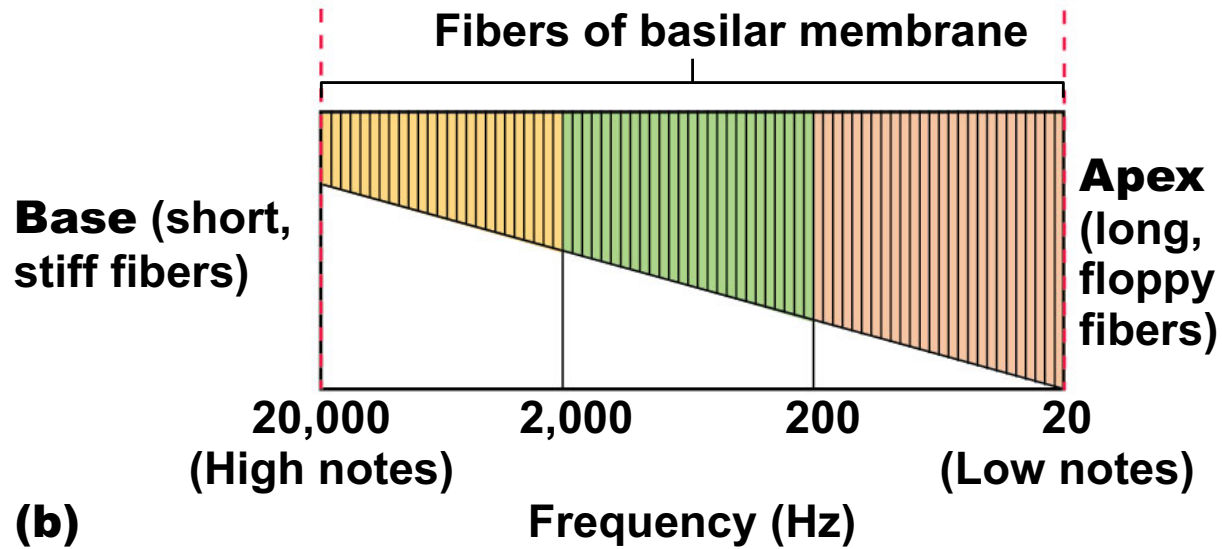




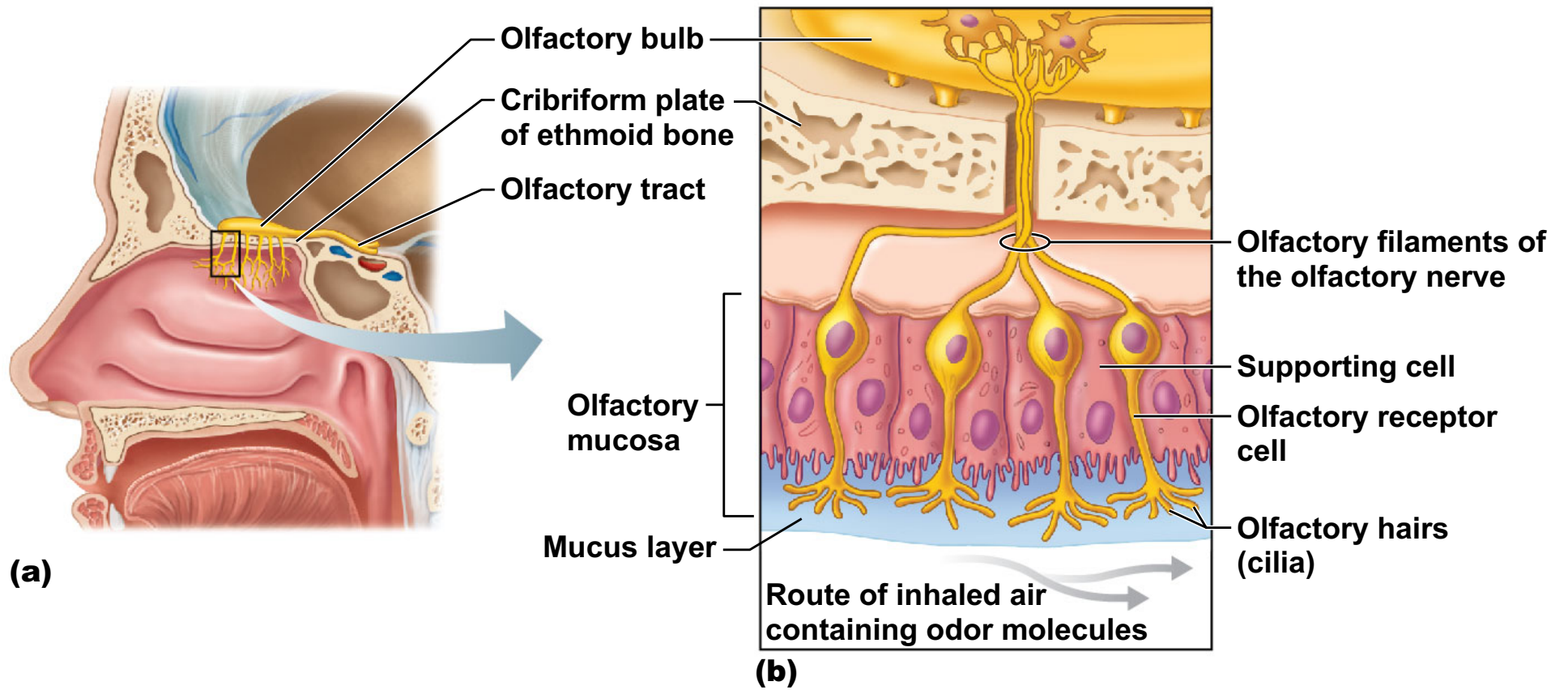


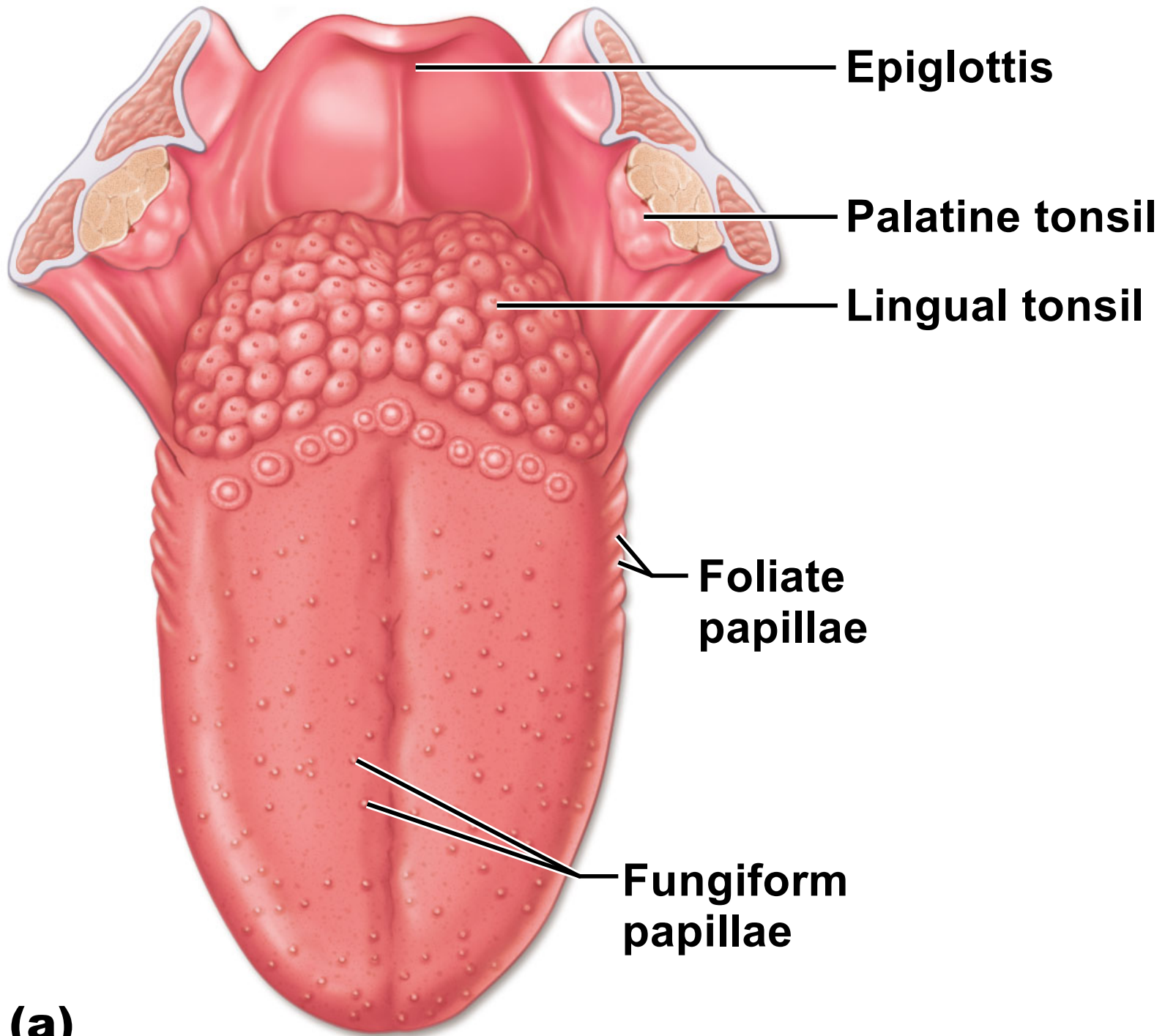


(a)



(b)





**(a)**

