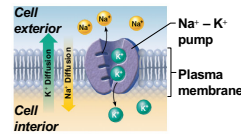
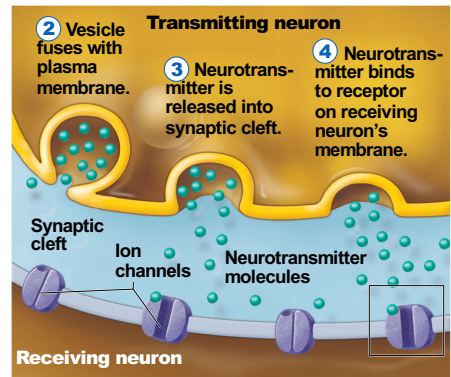
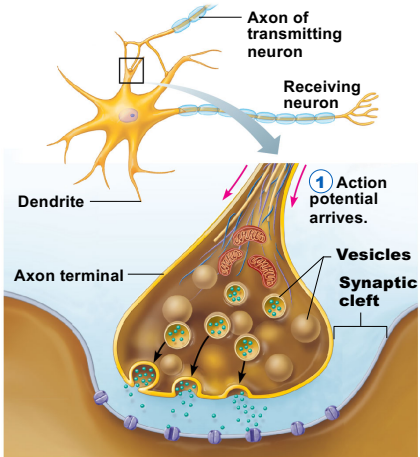


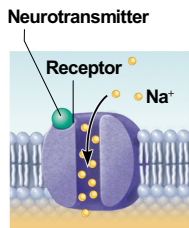
5 **Repolarization.** Potassium ions diffuse out of the cell as the membrane permeability changes again, restoring the negative charge on the inside of the membrane and the positive charge on the outside surface. Repolarization occurs in the same direction as depolarization.



6 **Initial ionic conditions restored.** The ionic conditions of the resting state are restored later by the activity of the sodium-potassium pump. Three sodium ions are ejected for every two potassium ions carried back into the cell.



5 **Ion channel opens.**



6 **Ion channel closes.**

Neurotransmitter is broken down and released.

