

Gel Electrophoresis

- Gel is made from agarose
- Agarose is a polysaccharide found in seaweed
- TAE is a buffer
- TAE is also used to conduct electricity
- Wells are made to accept samples
- Charged sample particles migrate through the gel
- Dye is added for viewing samples

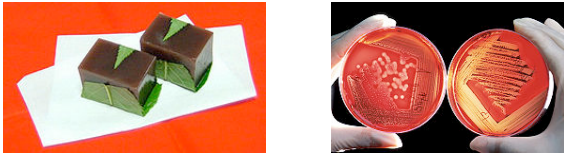
1

Factors Affecting Mobility

- Concentration of agarose in gel
- Size of particles
- Conformation of particles
- Charge of particles
- Voltage applied
- Time

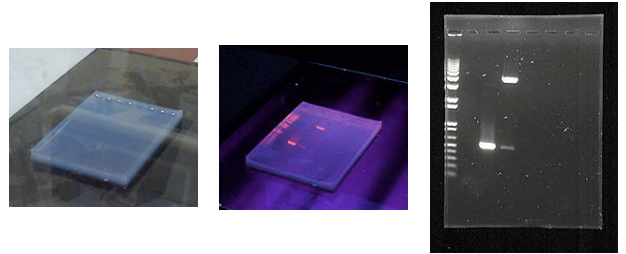
2

Agar Containing Agarose



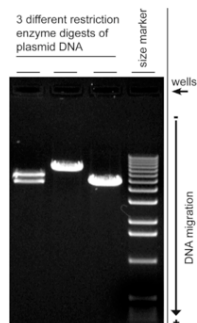
3

Agarose Gels



4

Comparison to a DNA Ladder



5