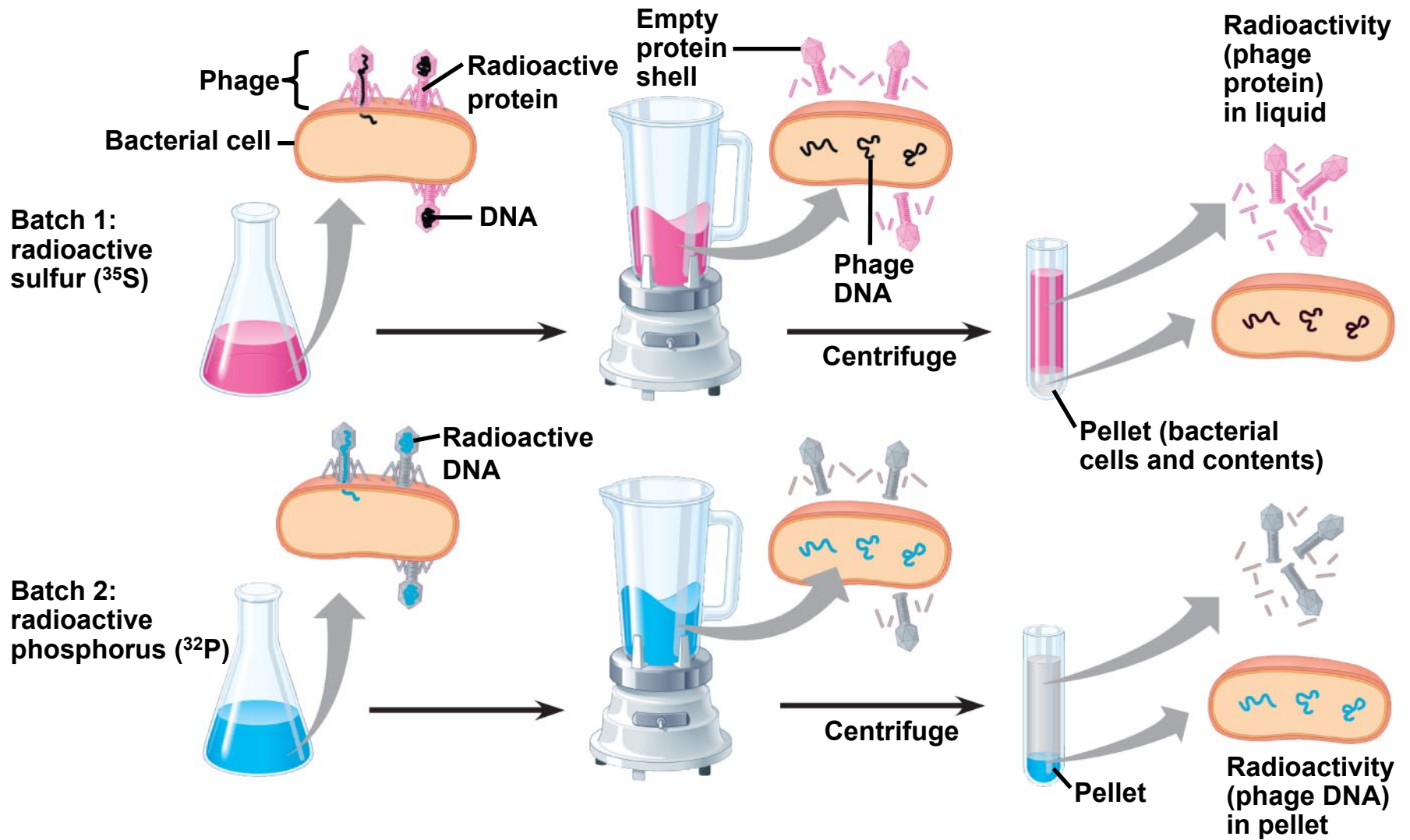
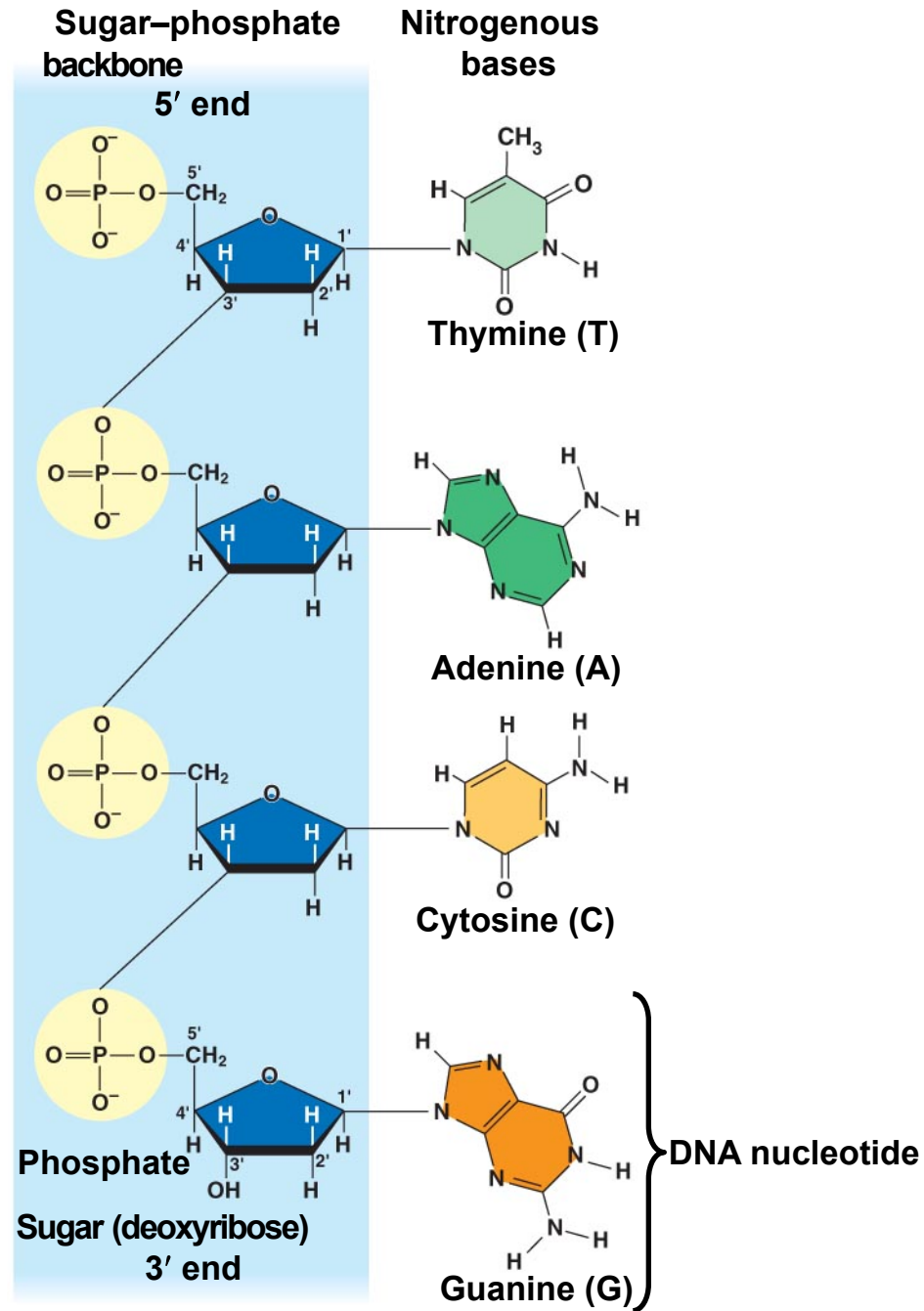


Copyright © 2008 Pearson Education, Inc., publishing as Pearson Benjamin Cummings.

EXPERIMENT

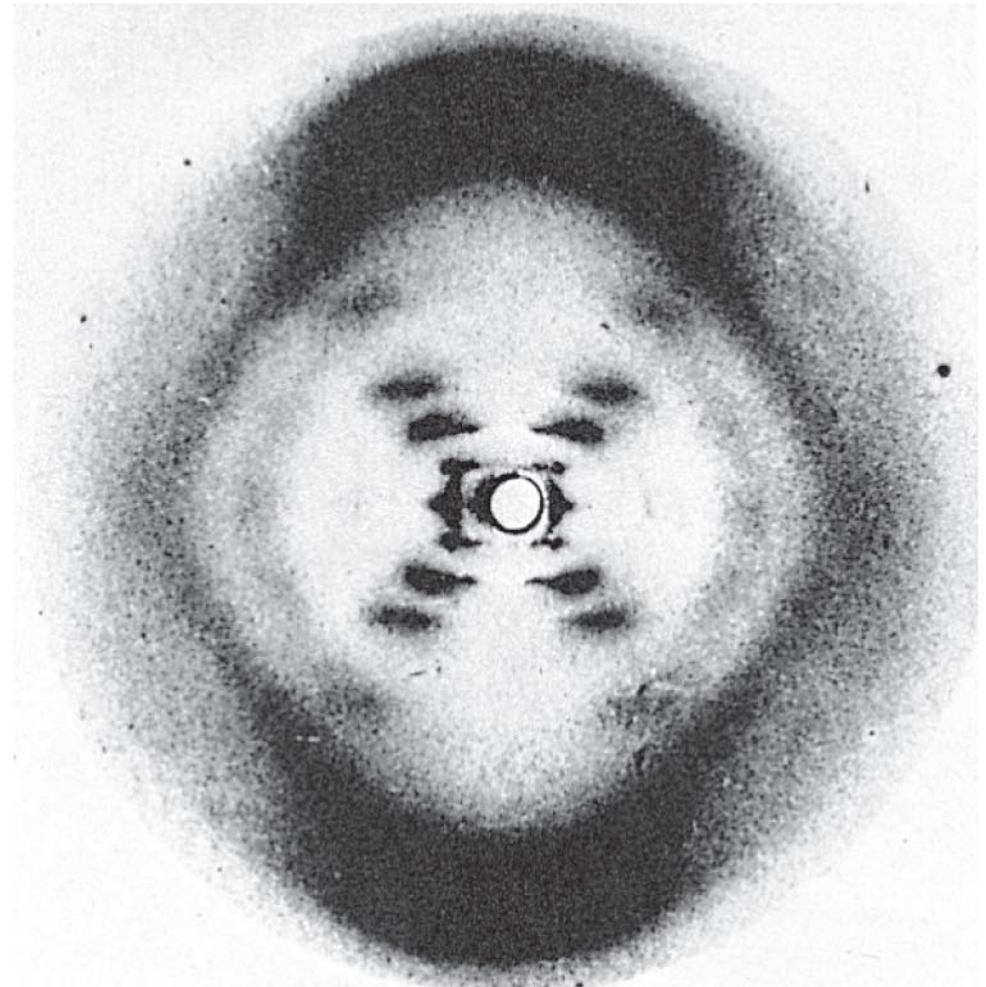




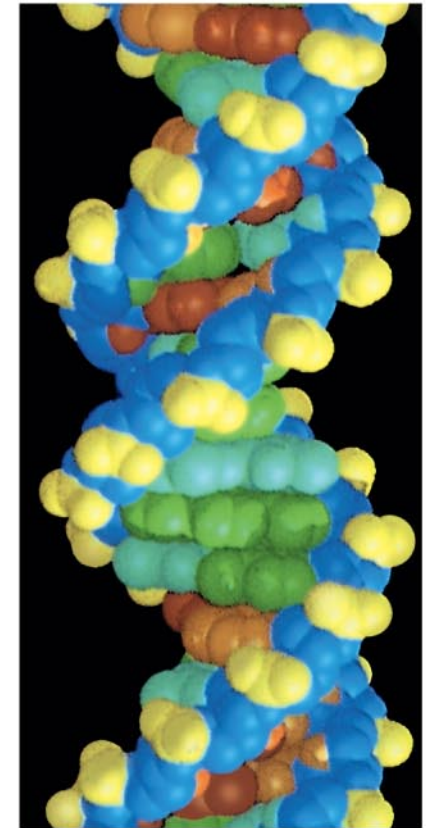
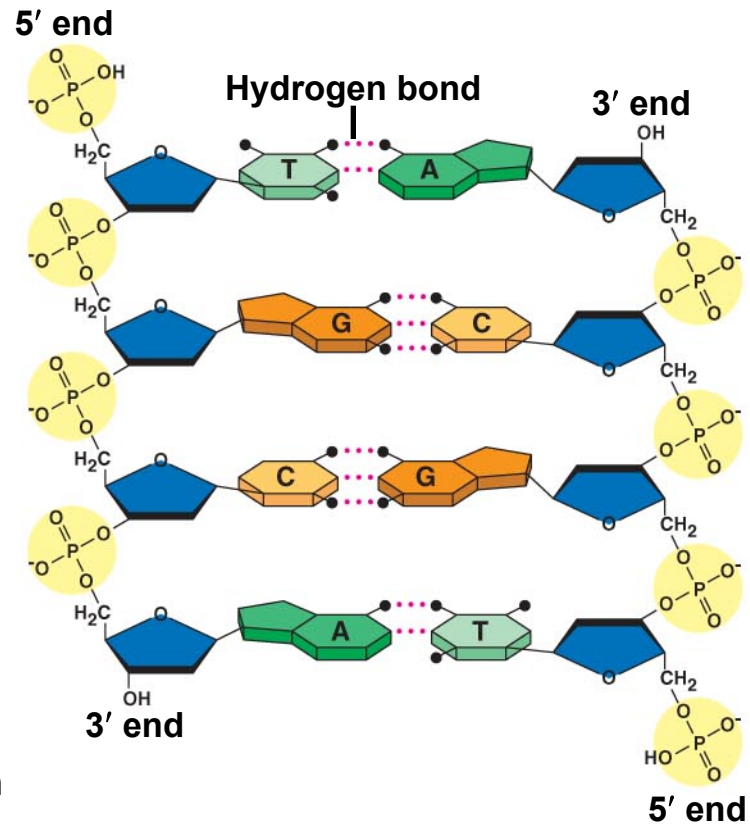
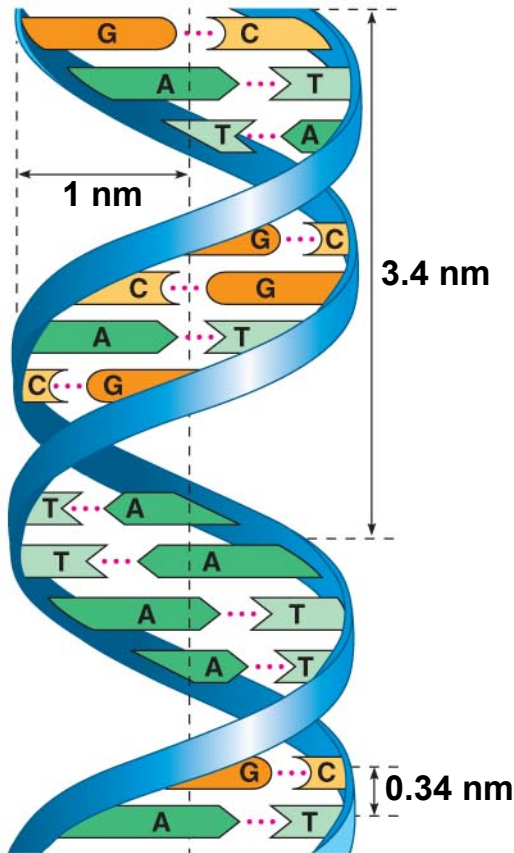
Copyright © 2008 Pearson Education, Inc., publishing as Pearson Benjamin Cummings.



(a) Rosalind Franklin



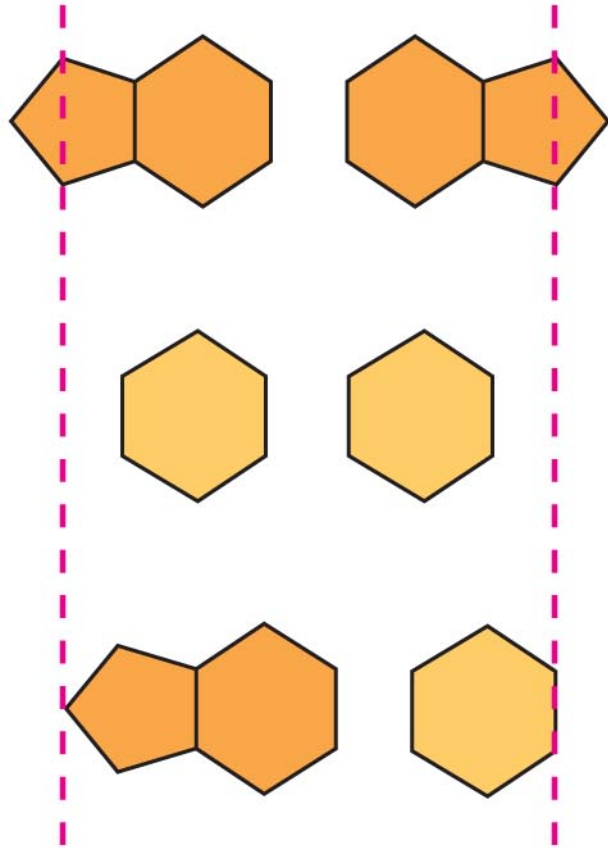
(b) Franklin's X-ray diffraction photograph of DNA



(a) Key features of DNA structure (b) Partial chemical structure

(c) Space-filling model

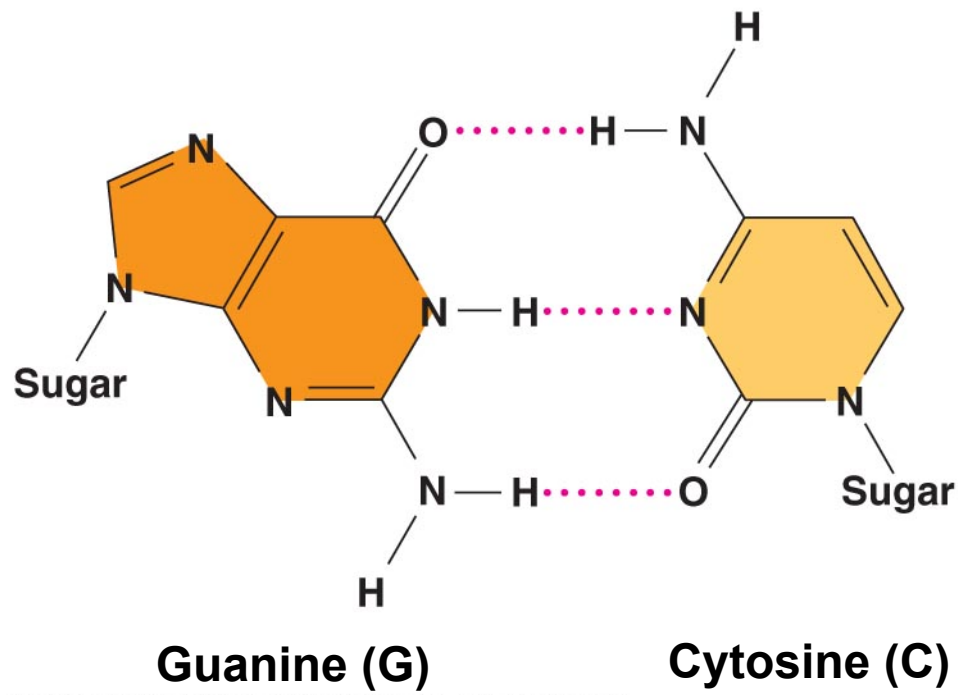
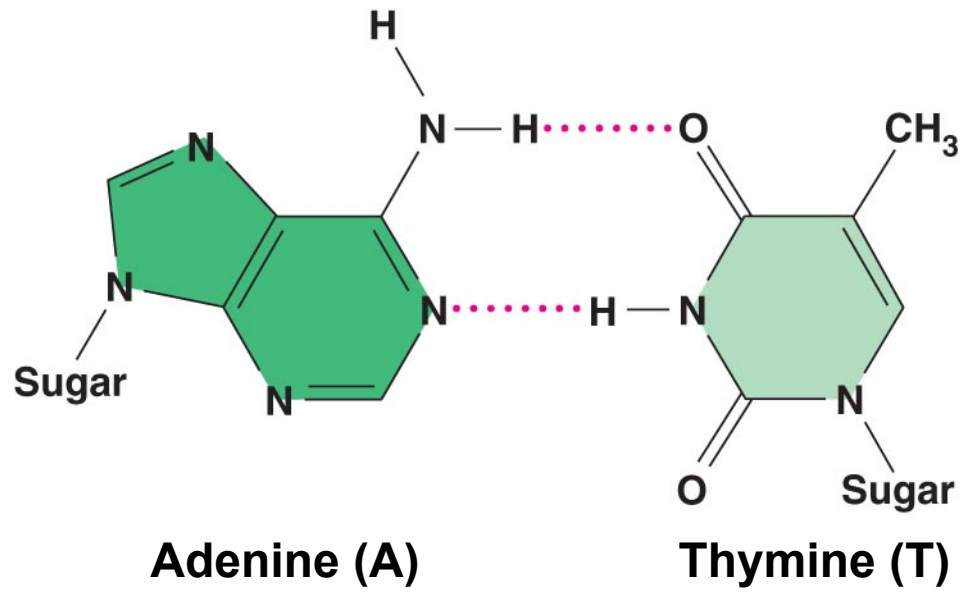
Copyright © 2008 Pearson Education, Inc., publishing as Pearson Benjamin Cummings.



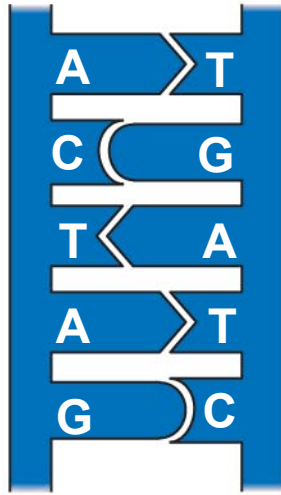
Purine + purine: too wide

Pyrimidine + pyrimidine: too narrow

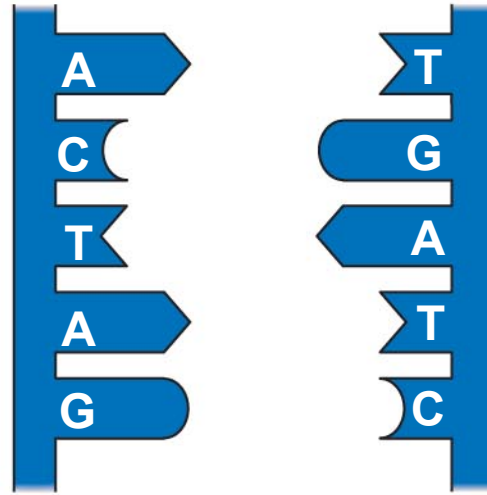
Purine + pyrimidine: width consistent with X-ray data



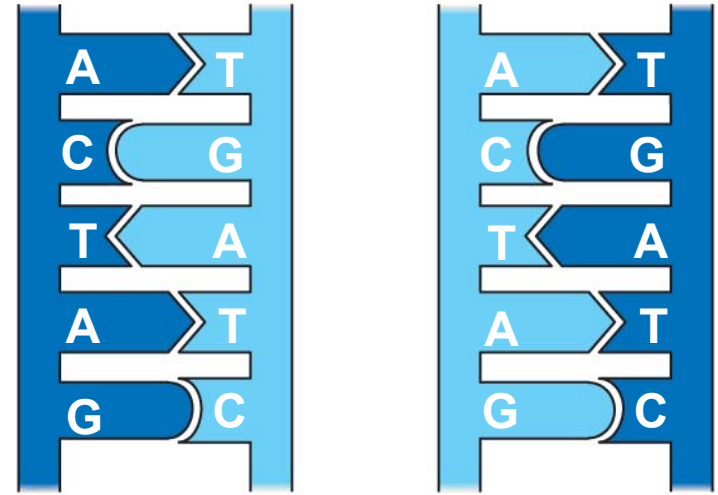
Copyright © 2008 Pearson Education, Inc., publishing as Pearson Benjamin Cummings.



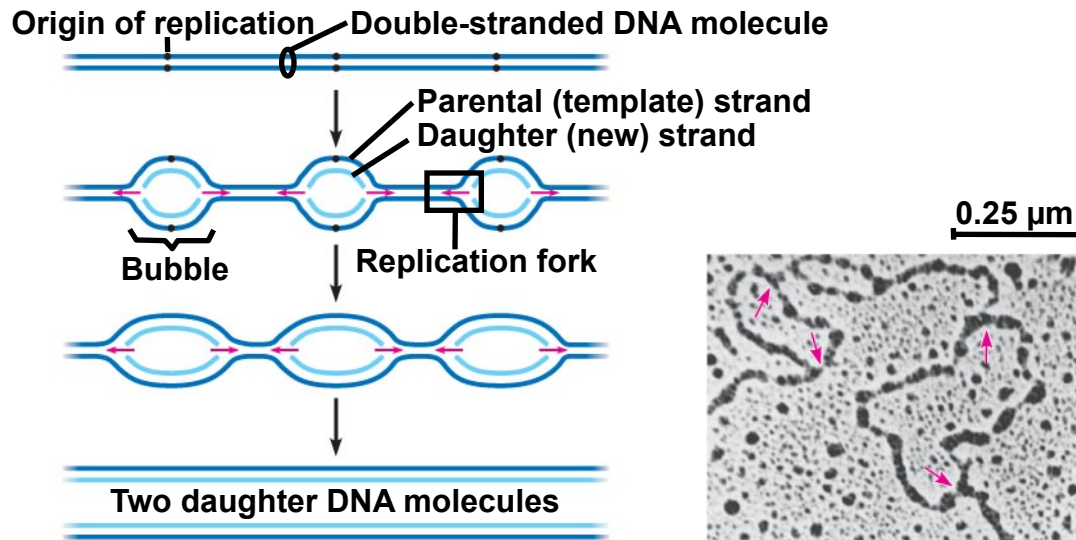
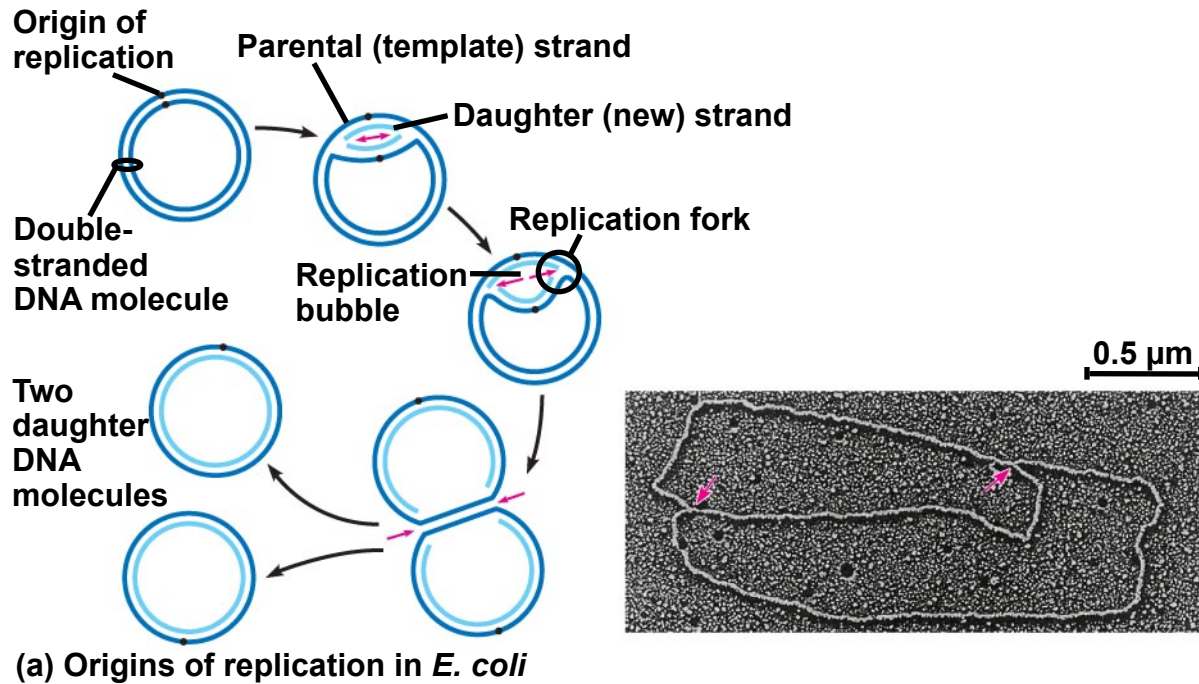
(a) Parent molecule

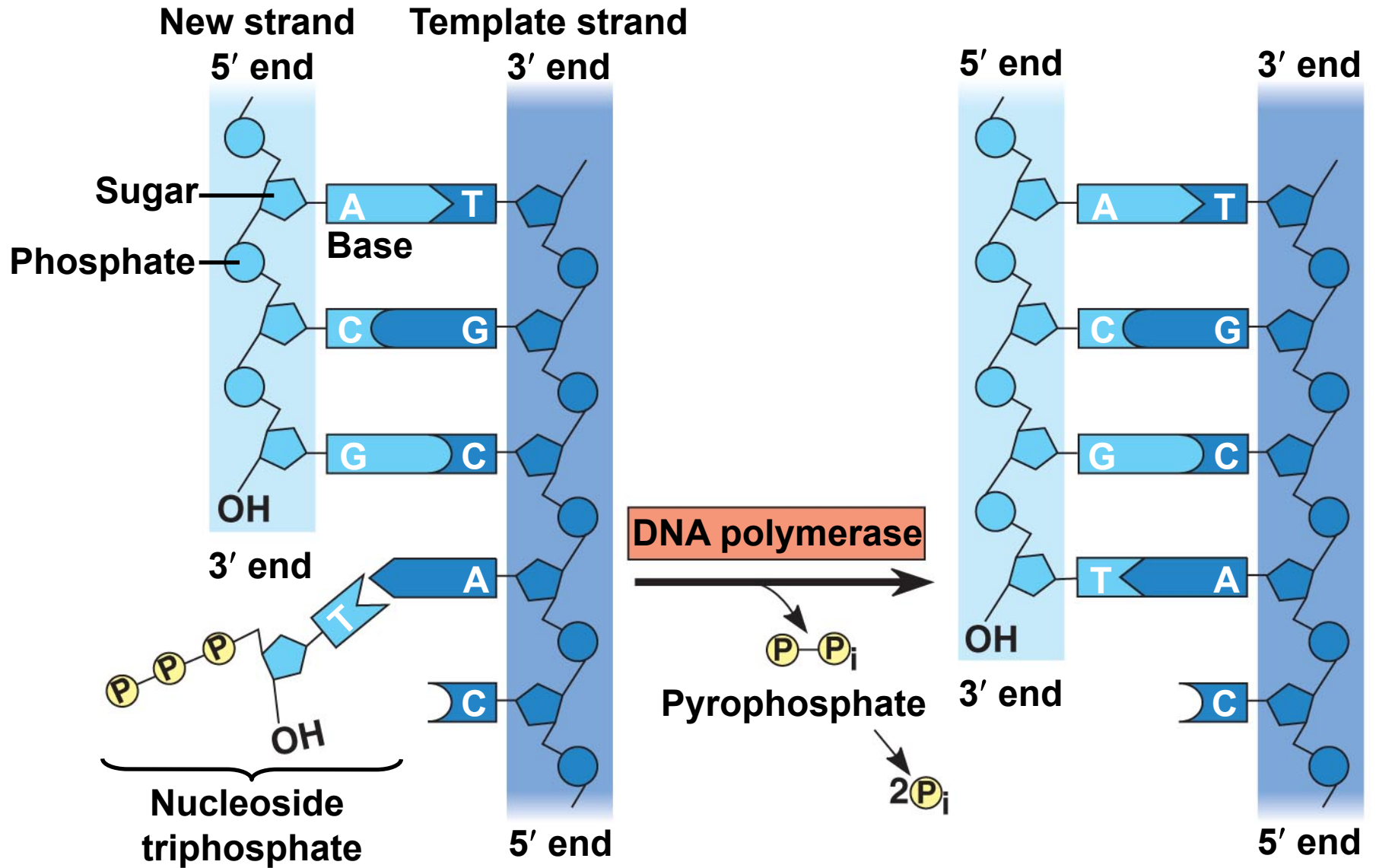


(b) Separation of strands

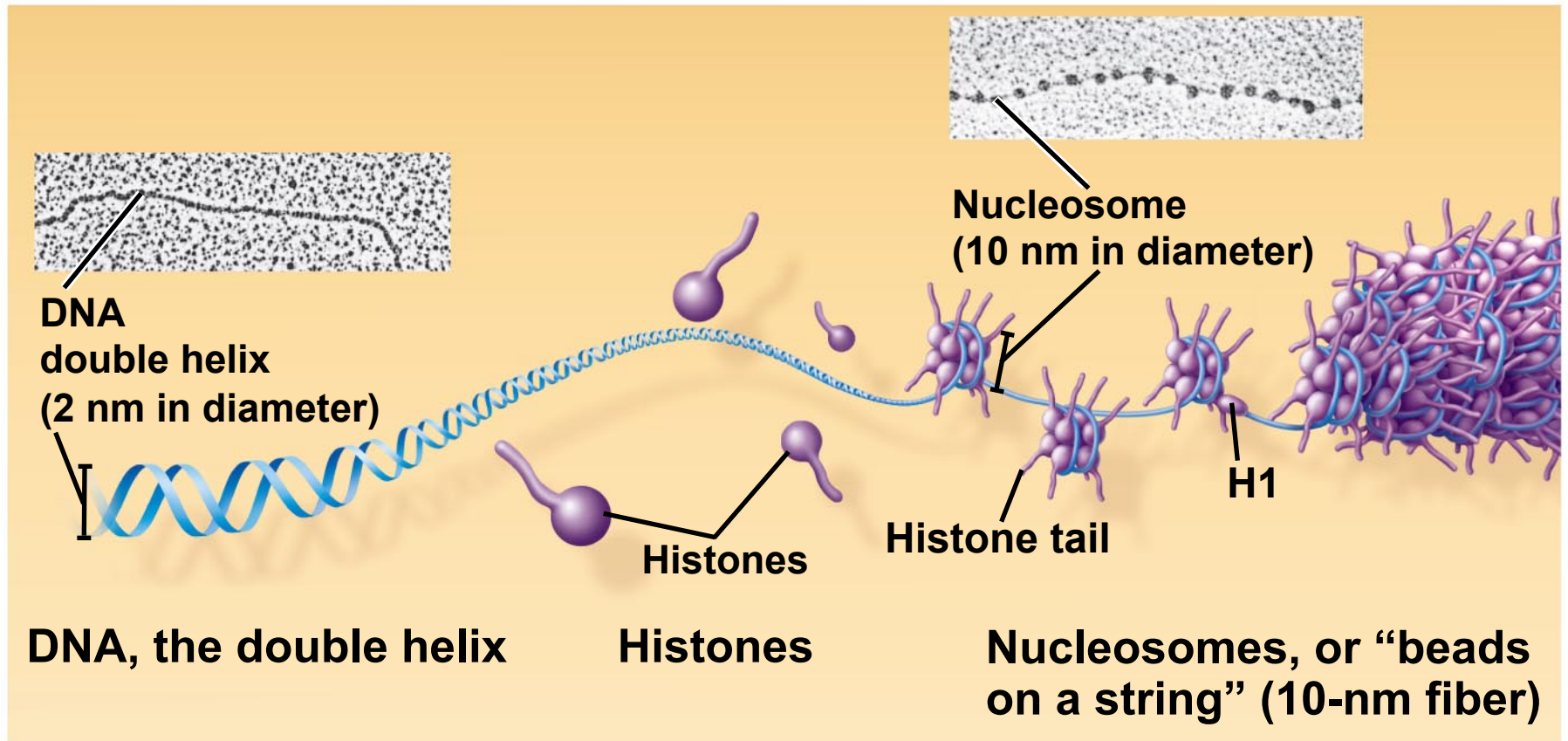


(c) “Daughter” DNA molecules, each consisting of one parental strand and one new strand





Copyright © 2008 Pearson Education, Inc., publishing as Pearson Benjamin Cummings.



Copyright © 2008 Pearson Education, Inc., publishing as Pearson Benjamin Cummings.

