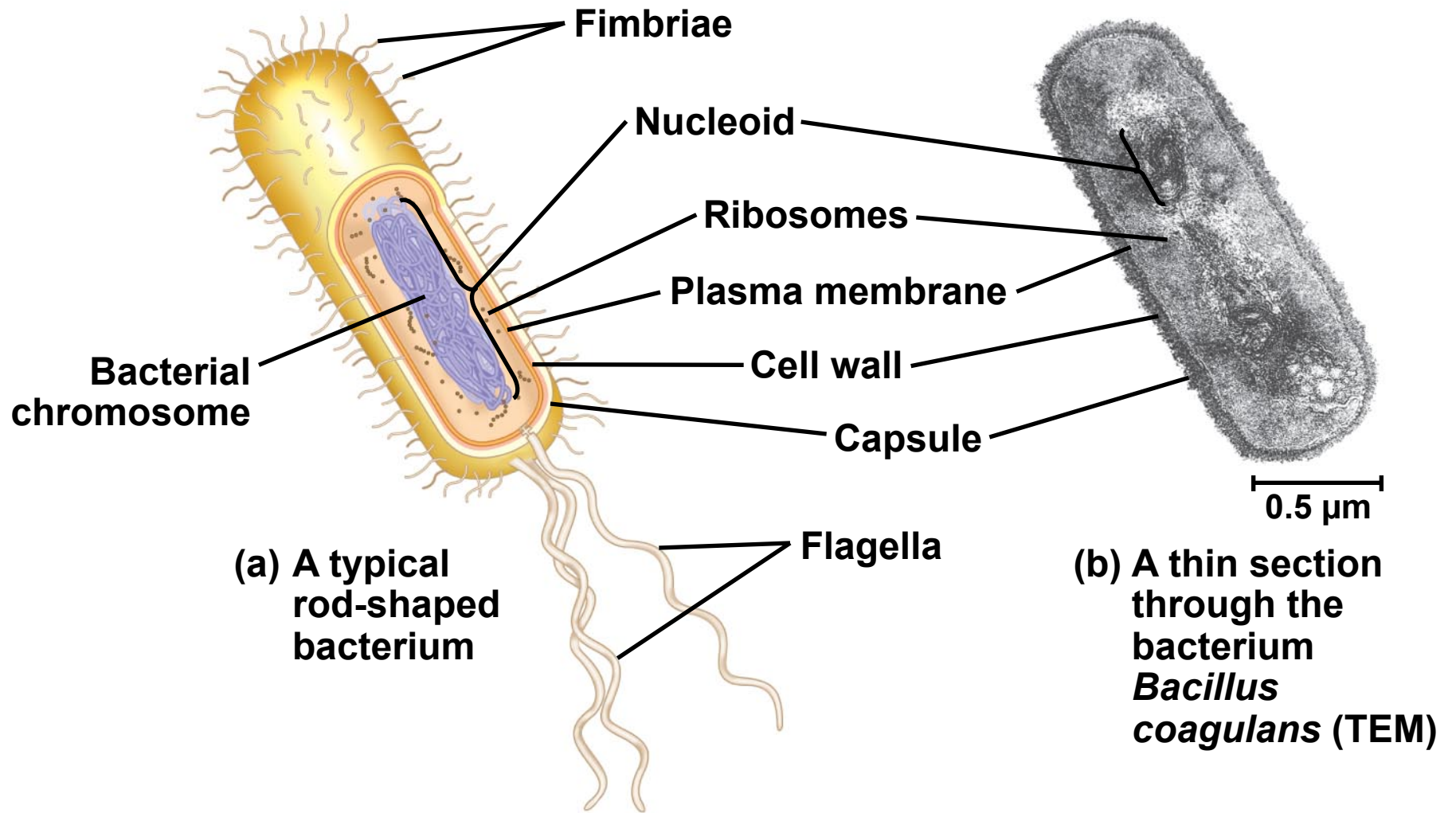
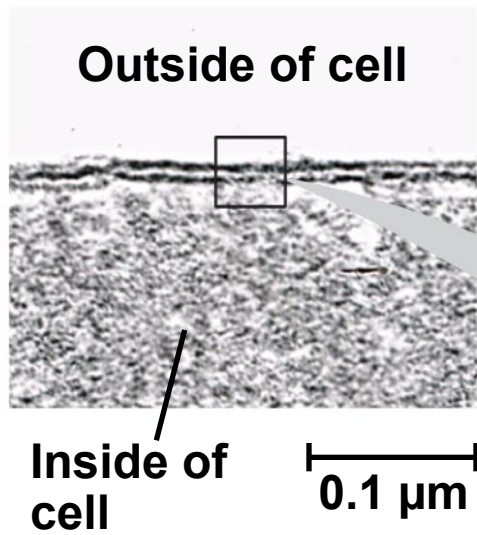


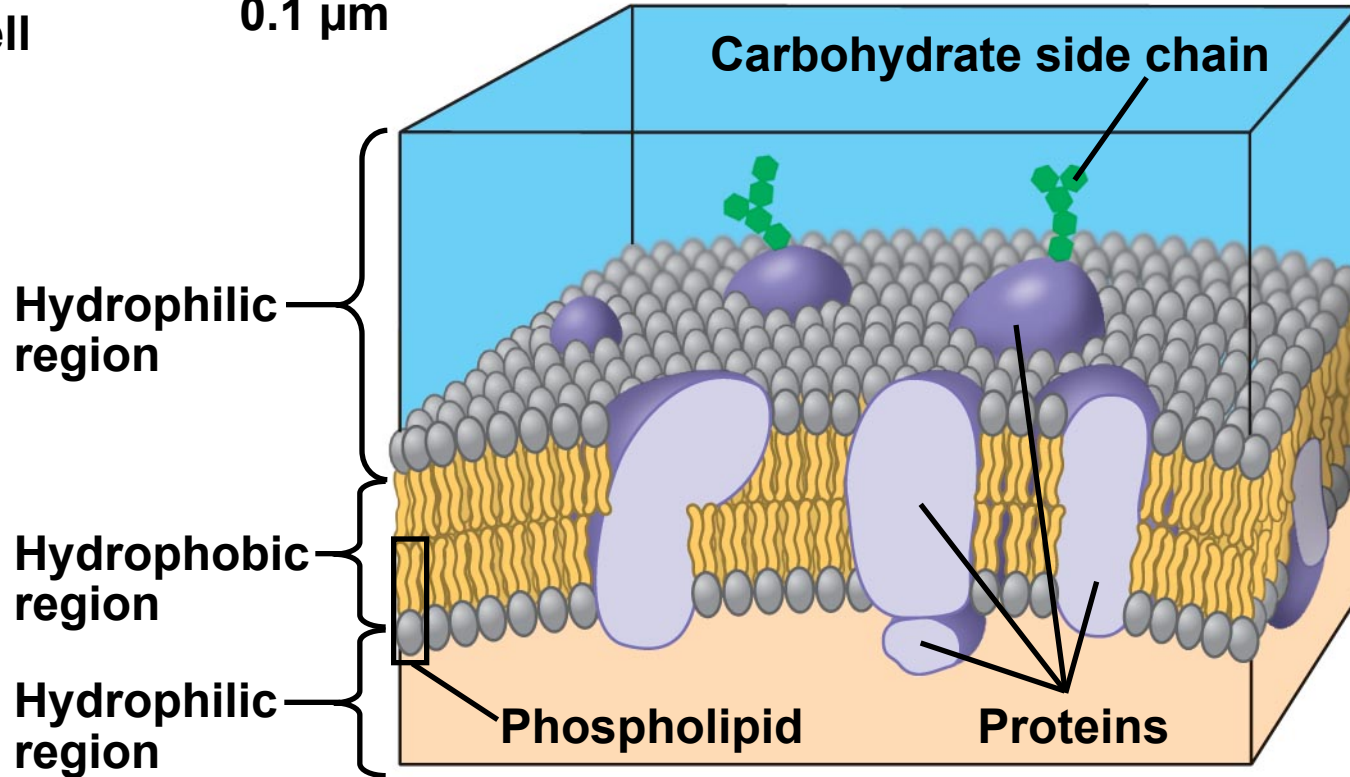
Copyright © 2008 Pearson Education, Inc., publishing as Pearson Benjamin Cummings.



Copyright © 2008 Pearson Education, Inc., publishing as Pearson Benjamin Cummings.

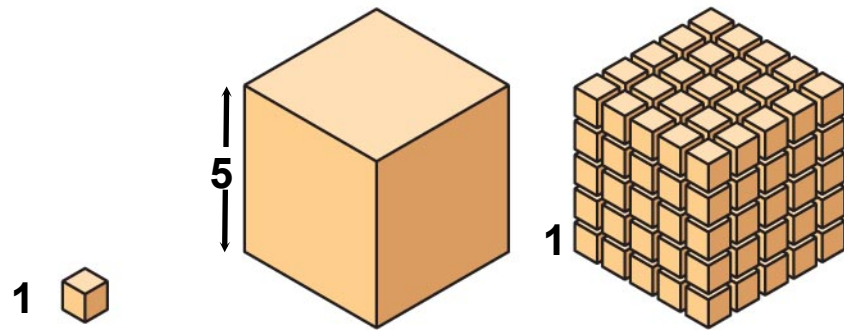


(a) TEM of a plasma membrane

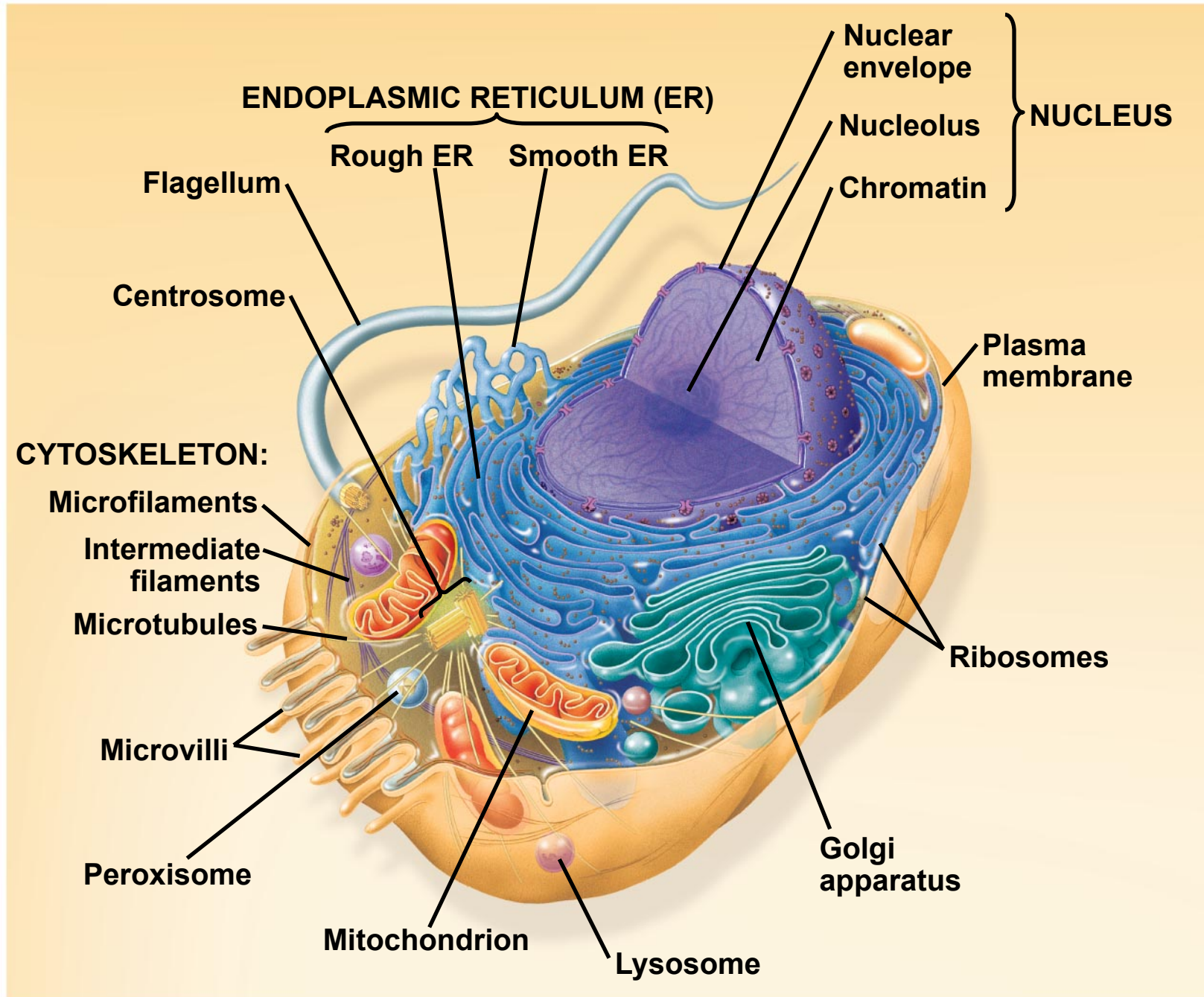


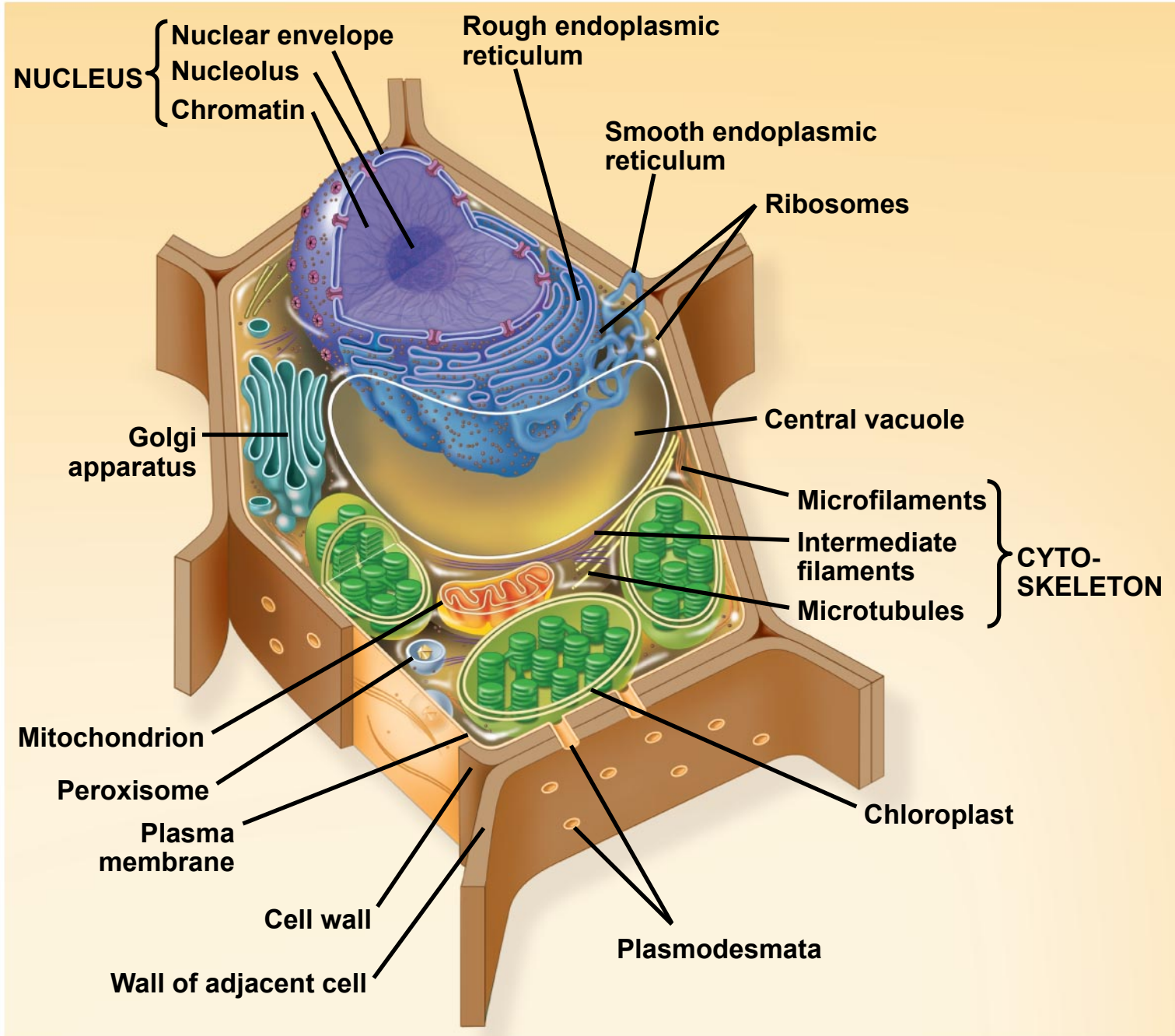
(b) Structure of the plasma membrane

Surface area increases while total volume remains constant

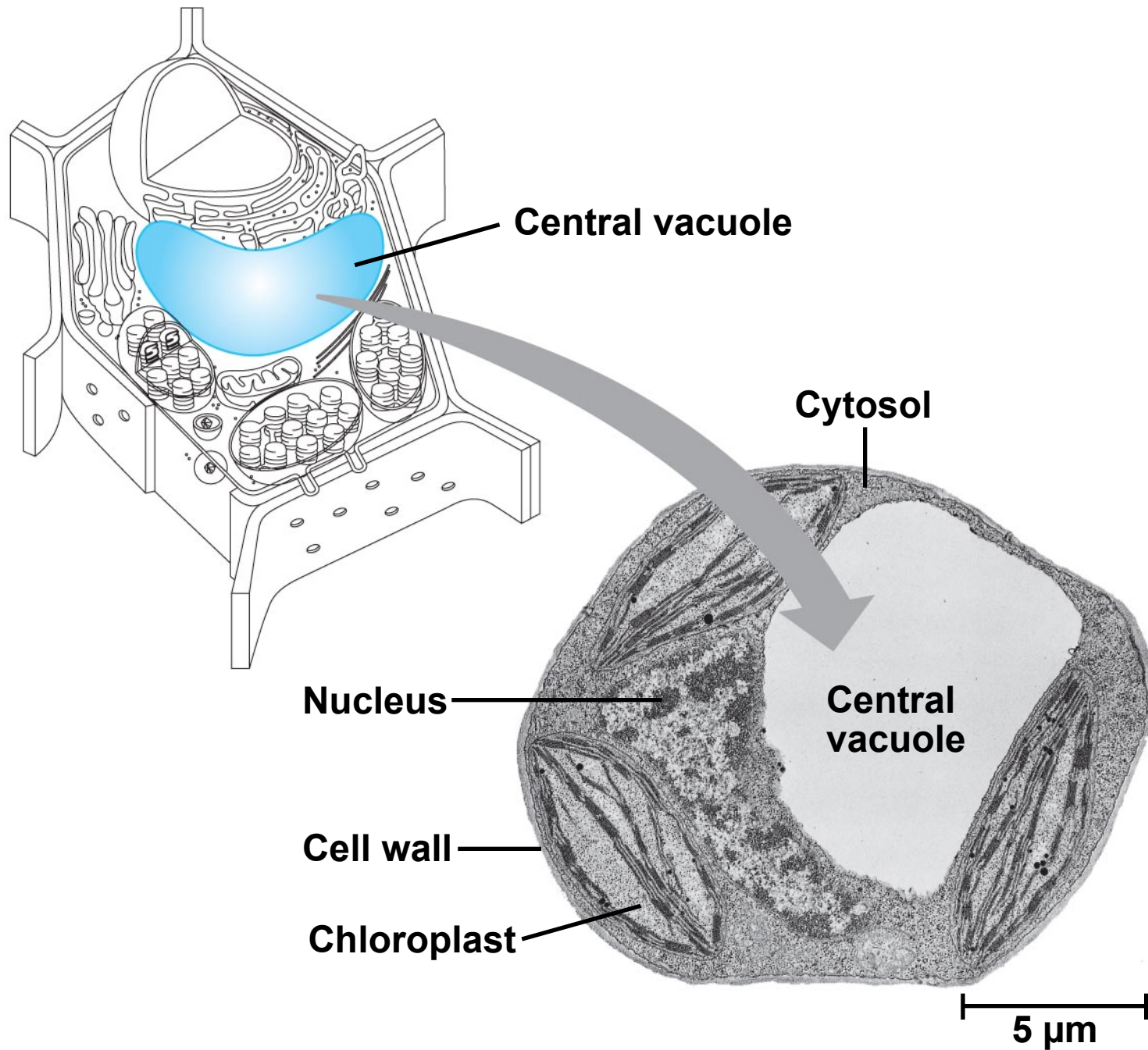


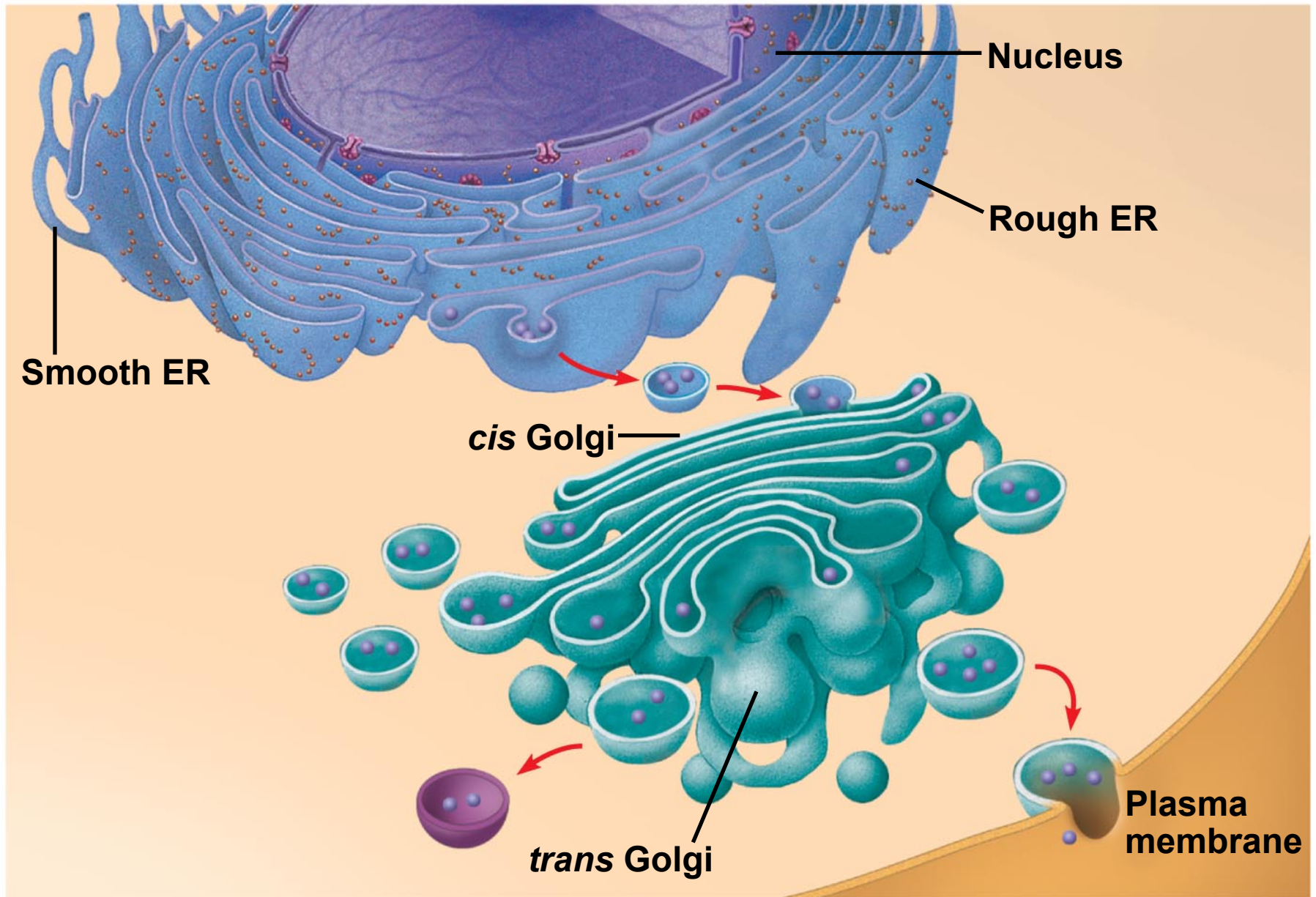
<b>Total surface area</b> [Sum of the surface areas (height × width) of all boxes sides × number of boxes]	6	150	750
<b>Total volume</b> [height × width × length × number of boxes]	1	125	125
<b>Surface-to-volume</b> (S-to-V) ratio [surface area ÷ volume]	6	1.2	6



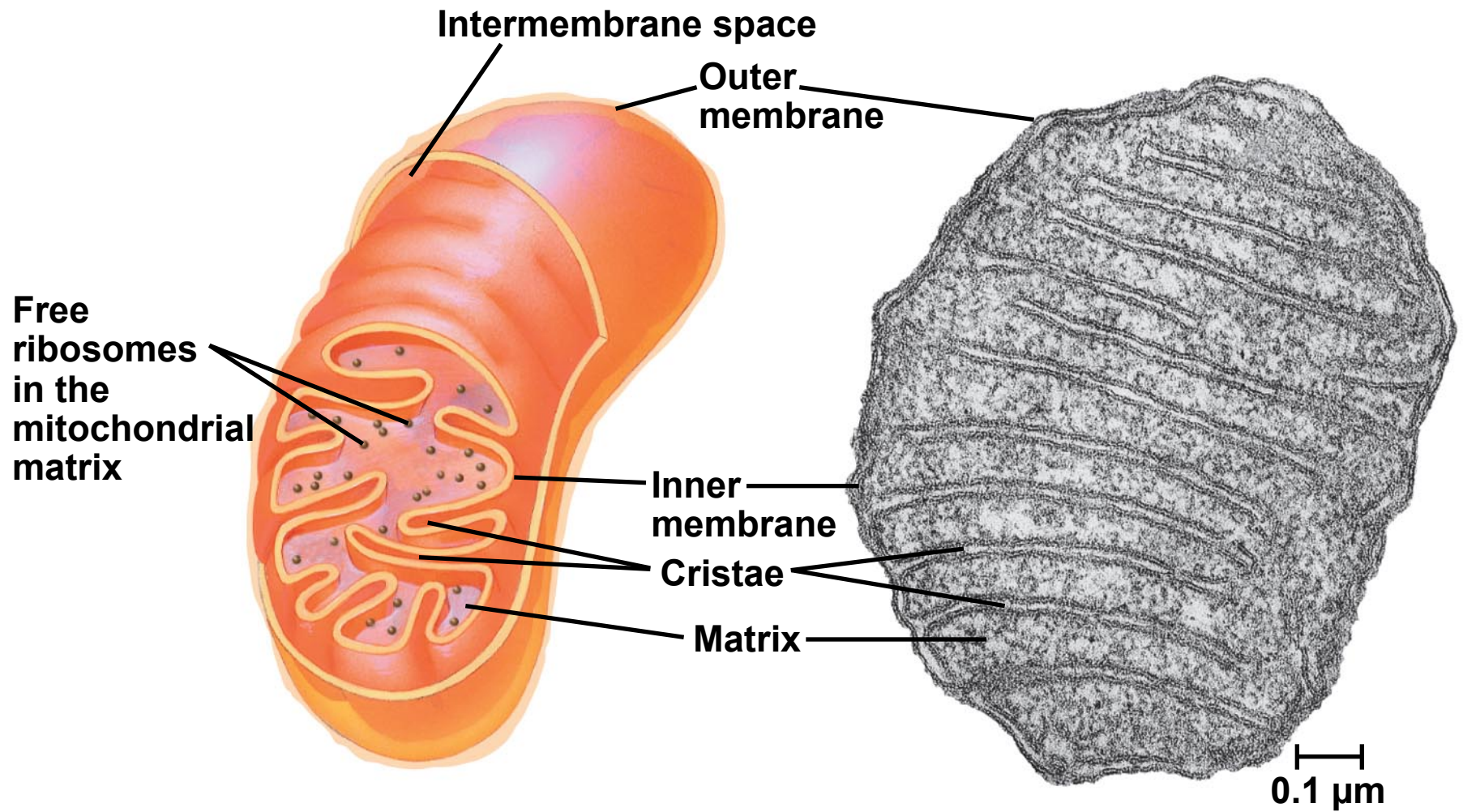


Copyright © 2008 Pearson Education, Inc., publishing as Pearson Benjamin Cummings.

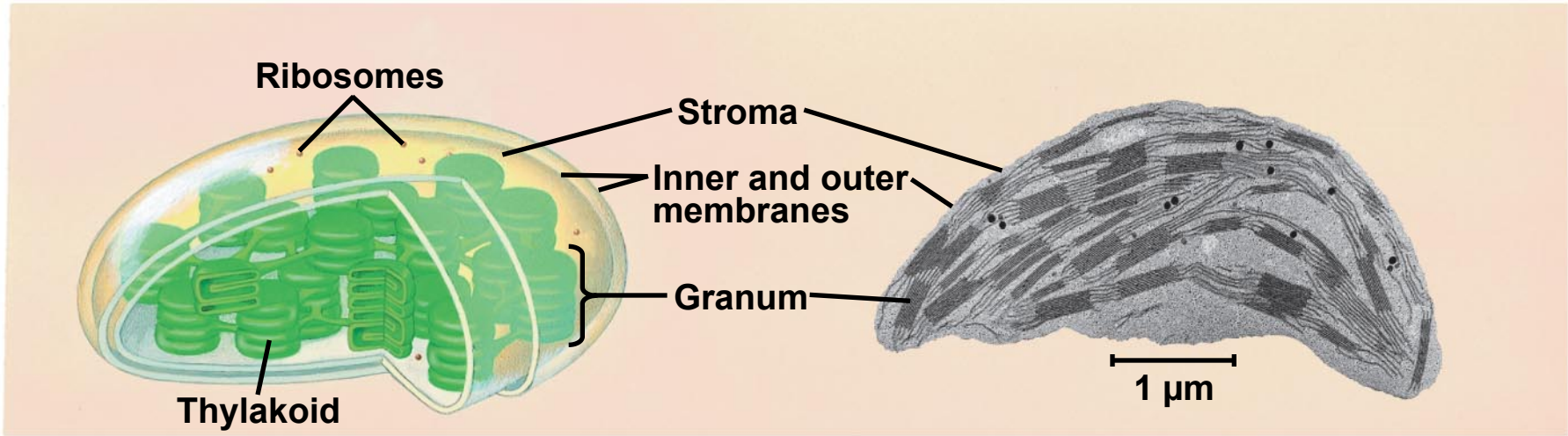




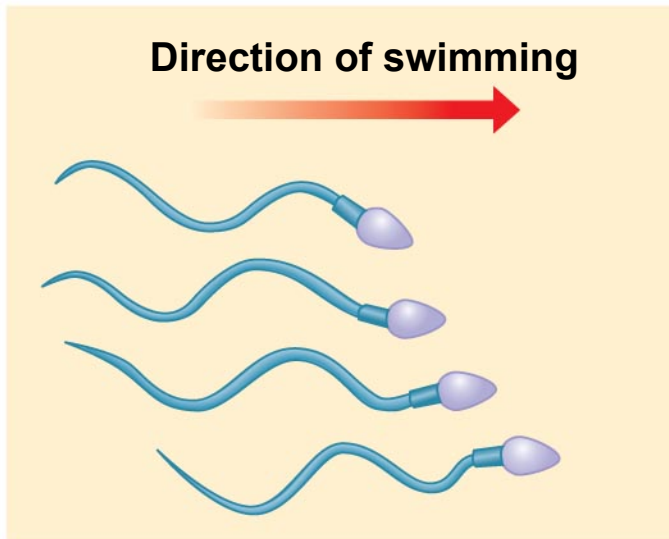




Copyright © 2008 Pearson Education, Inc., publishing as Pearson Benjamin Cummings.



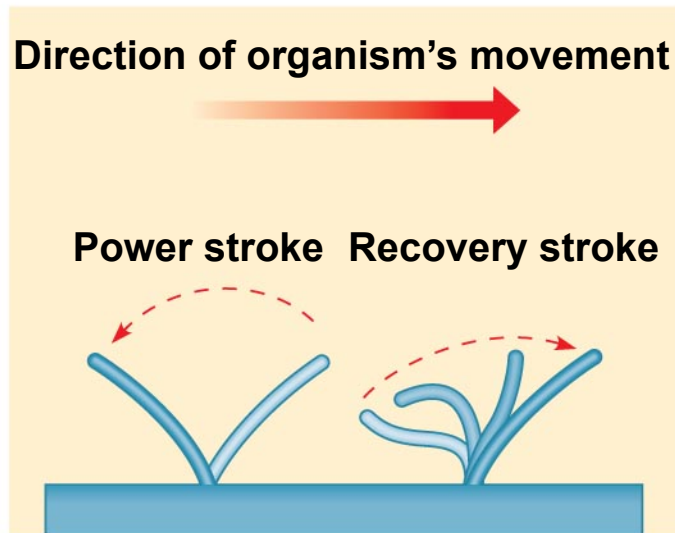
Copyright © 2008 Pearson Education, Inc., publishing as Pearson Benjamin Cummings.



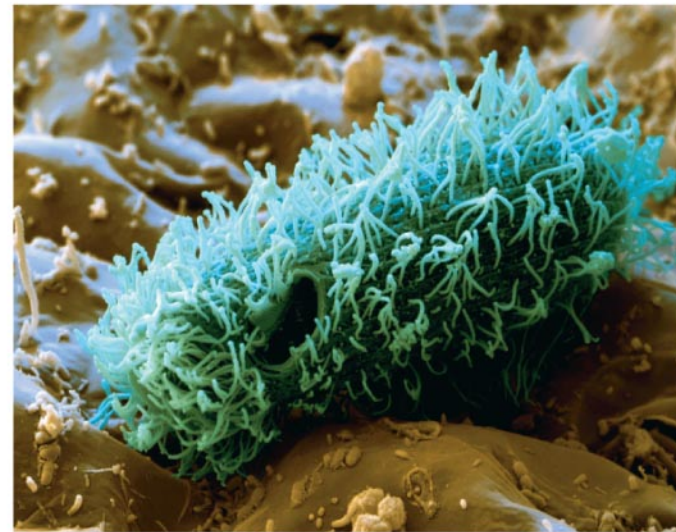
**(a) Motion of flagella**



5  $\mu\text{m}$



**(b) Motion of cilia**



15  $\mu\text{m}$