

Fig. 21.1

Copyright © McGraw-Hill Education. Permission required for reproduction or display.

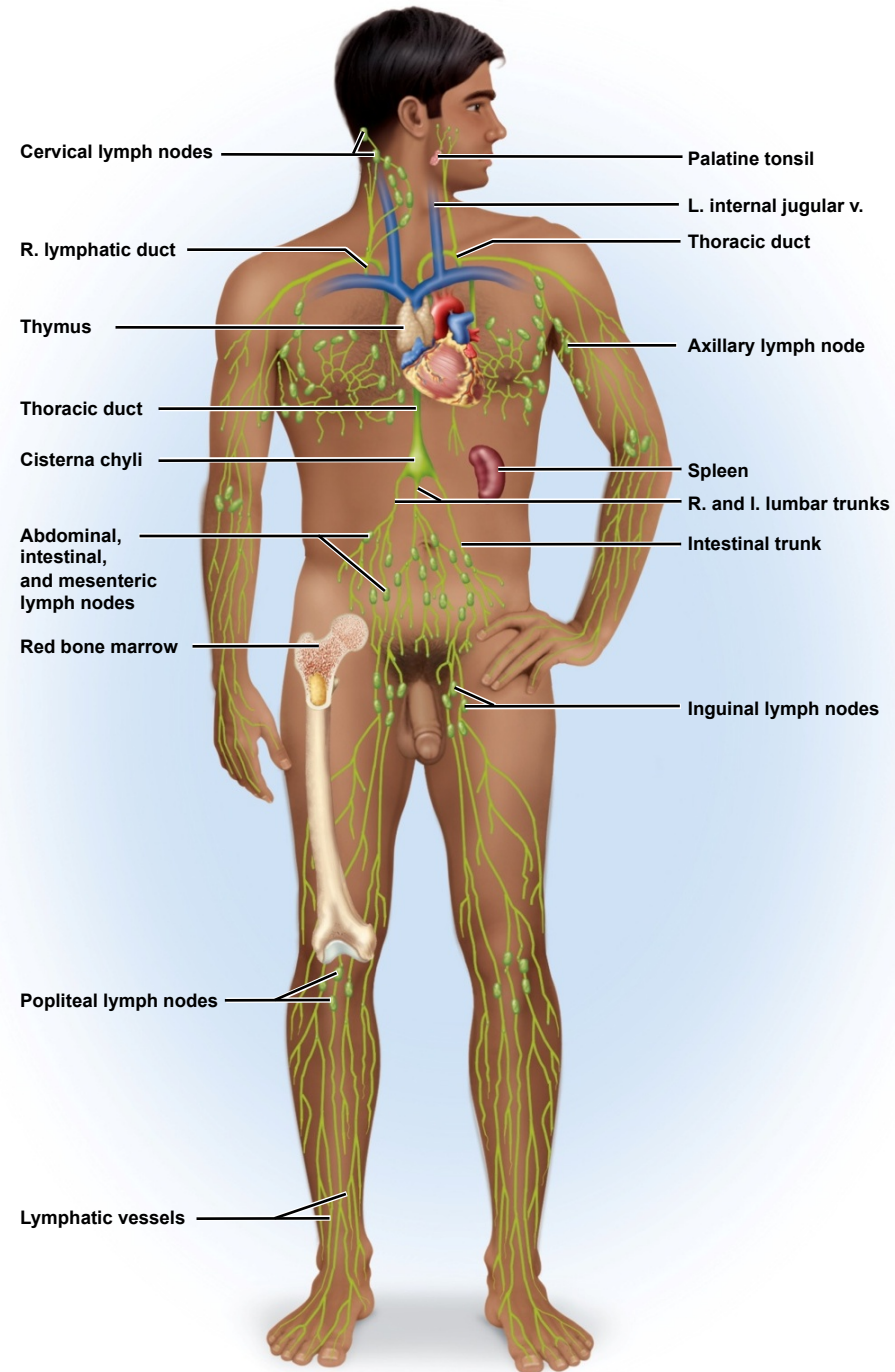


Fig. 21.2

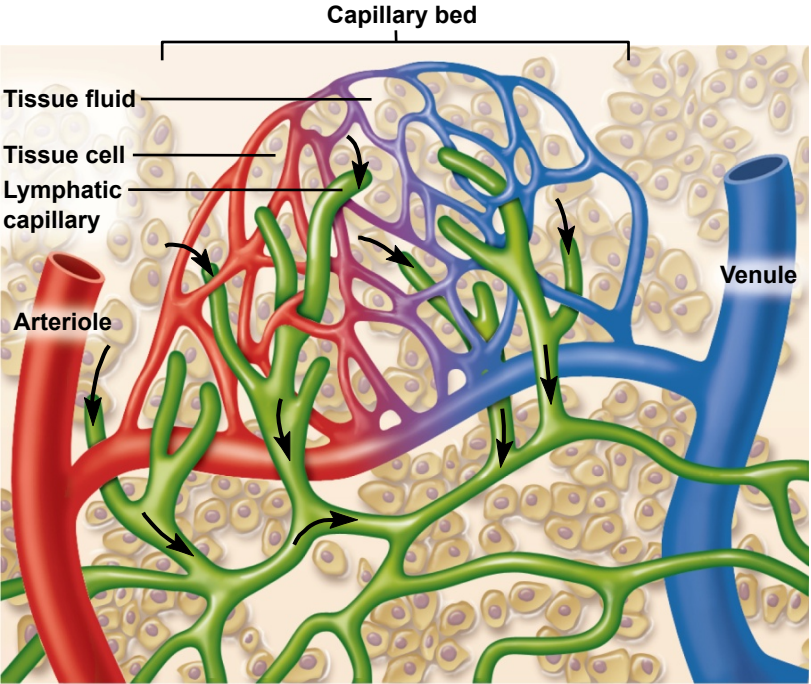
Copyright © McGraw-Hill Education. Permission required for reproduction or display.



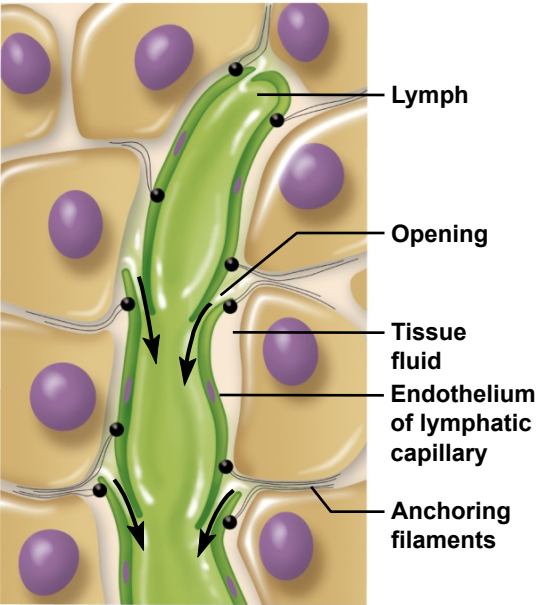
©Medicimage/Visuals Unlimited, Inc.

Fig. 21.3

Copyright © McGraw-Hill Education. Permission required for reproduction or display.



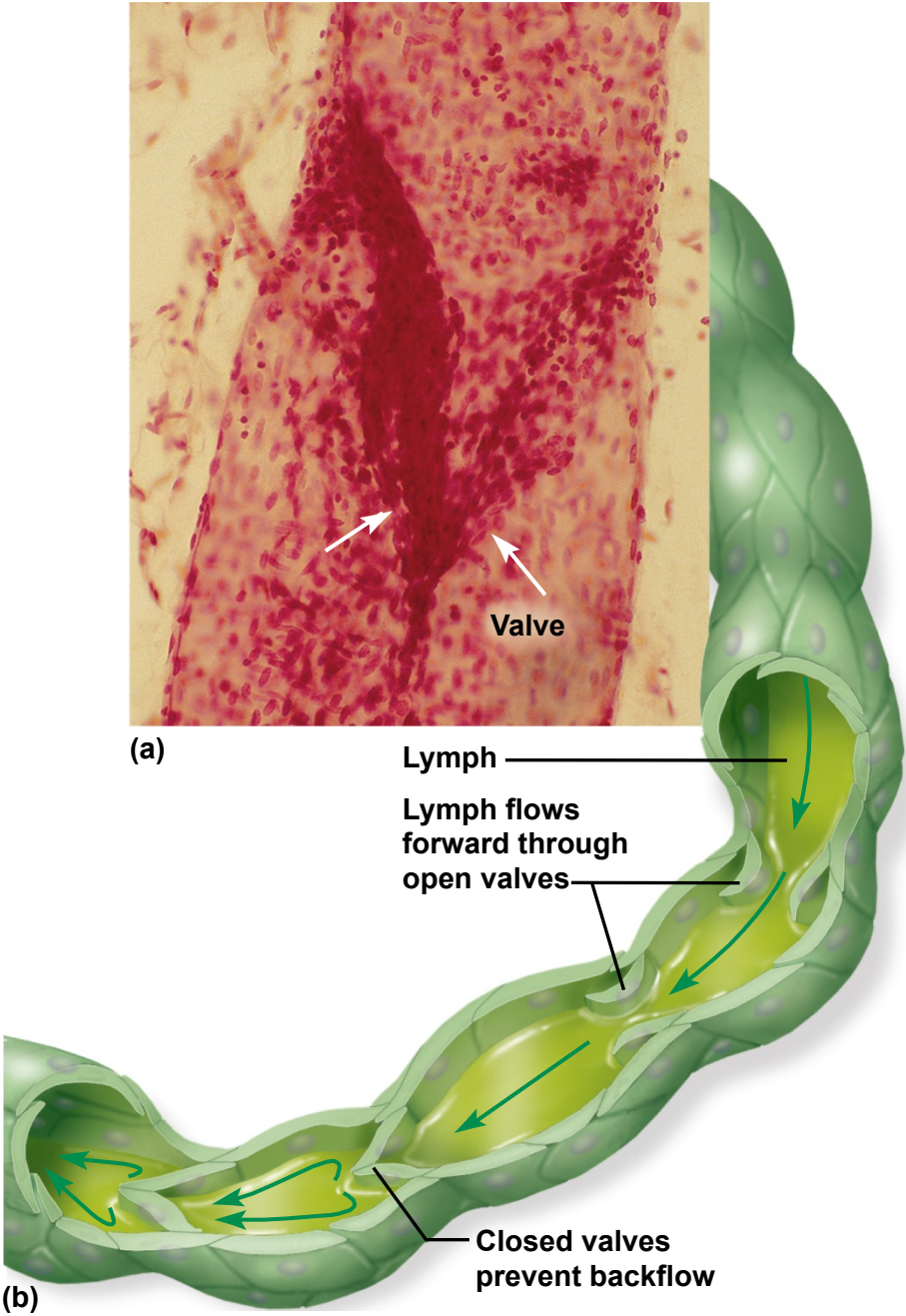
(a)



(b)

Fig. 21.4

Copyright © McGraw-Hill Education. Permission required for reproduction or display.



a: ©McGraw-Hill Education/Dennis Strete

Fig. 21.5

Copyright © McGraw-Hill Education. Permission required for reproduction or display.

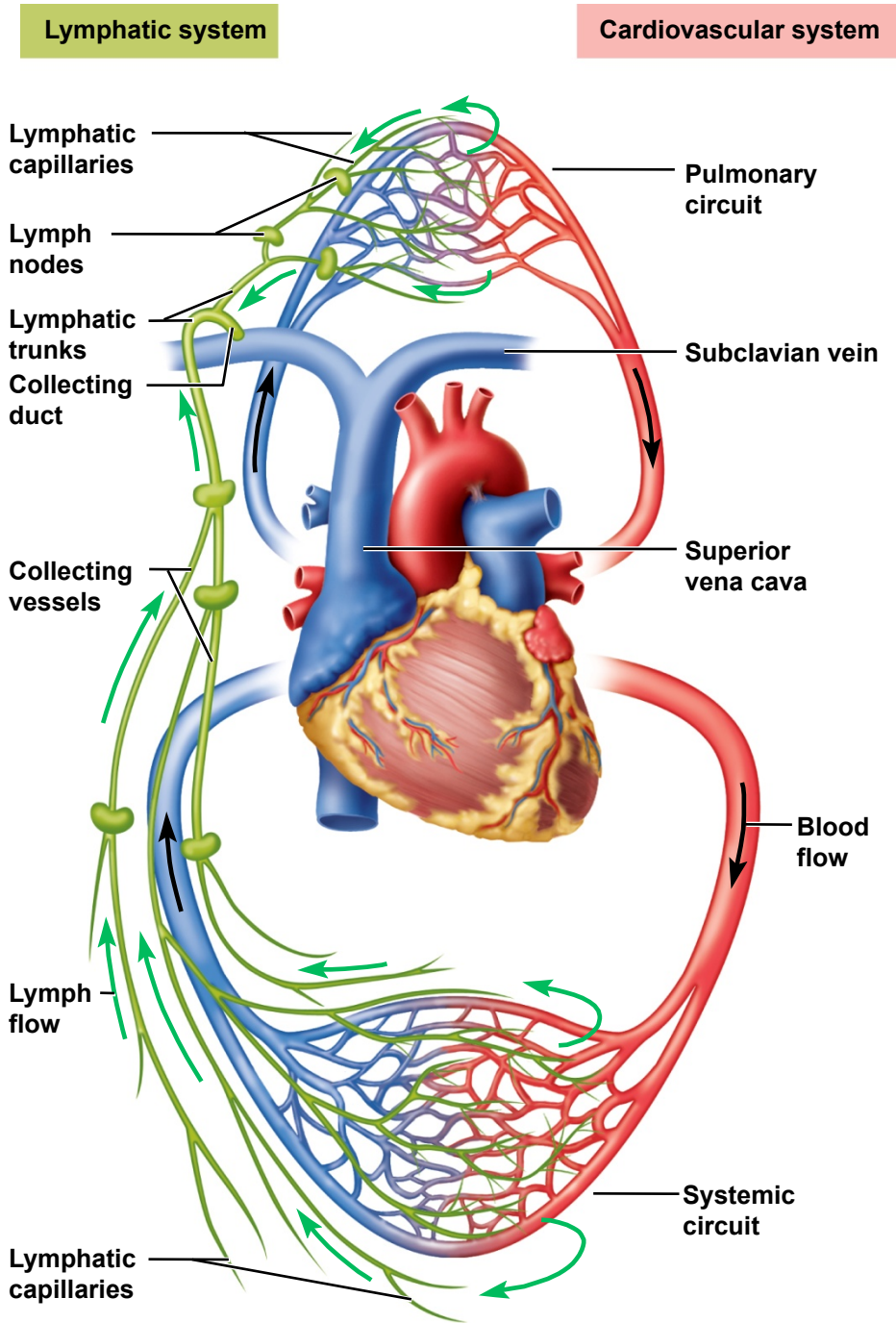


Fig. 21.6

Copyright © McGraw-Hill Education. Permission required for reproduction or display.

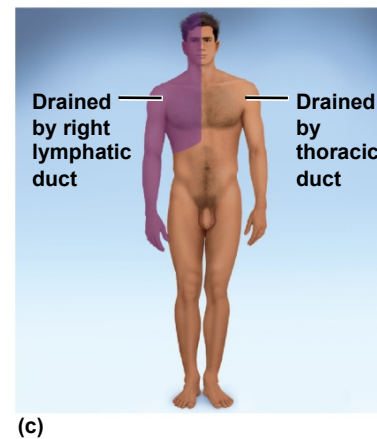
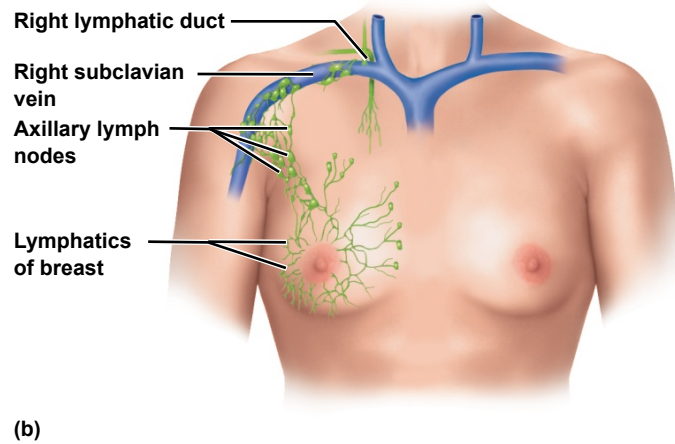
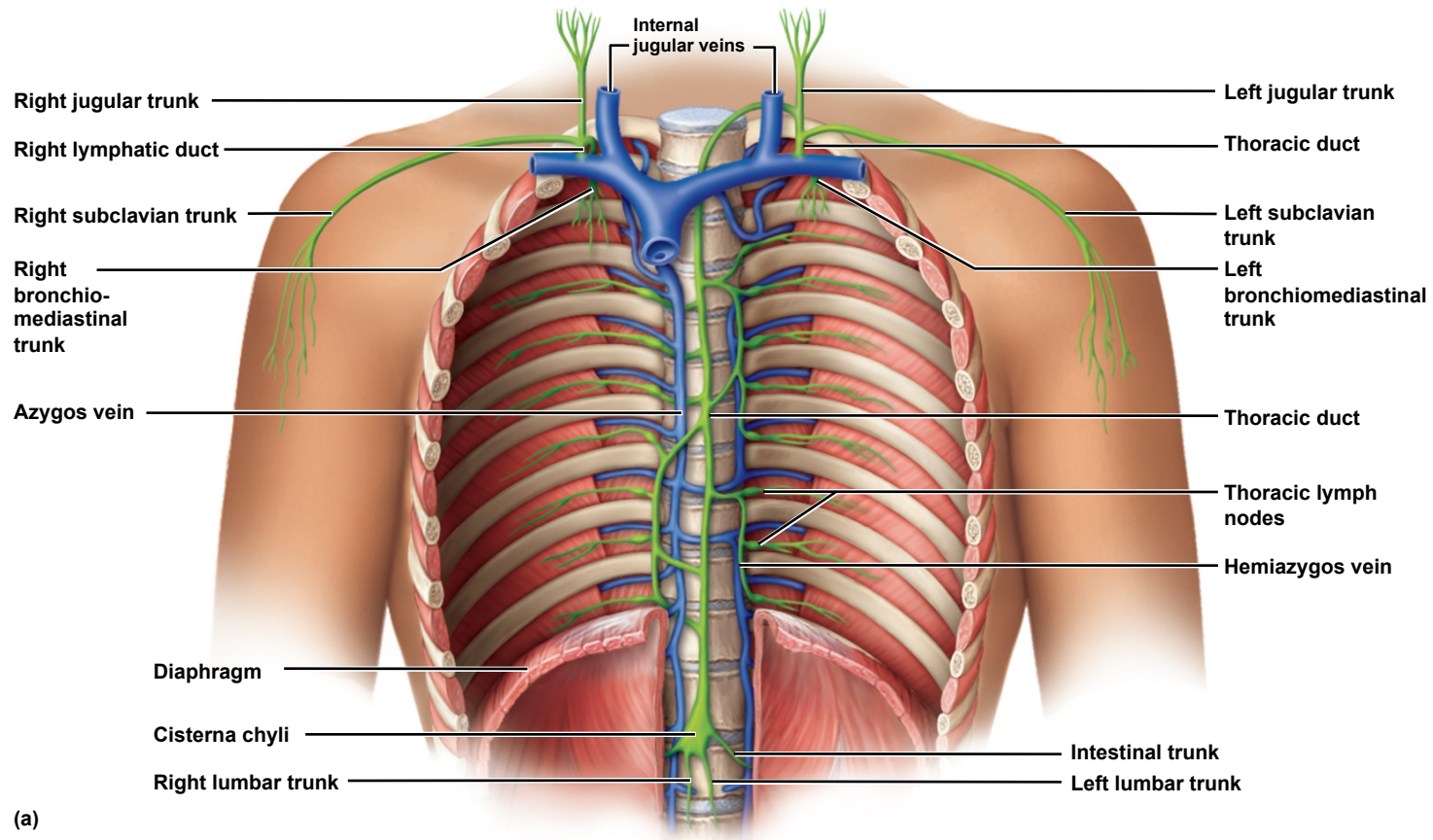
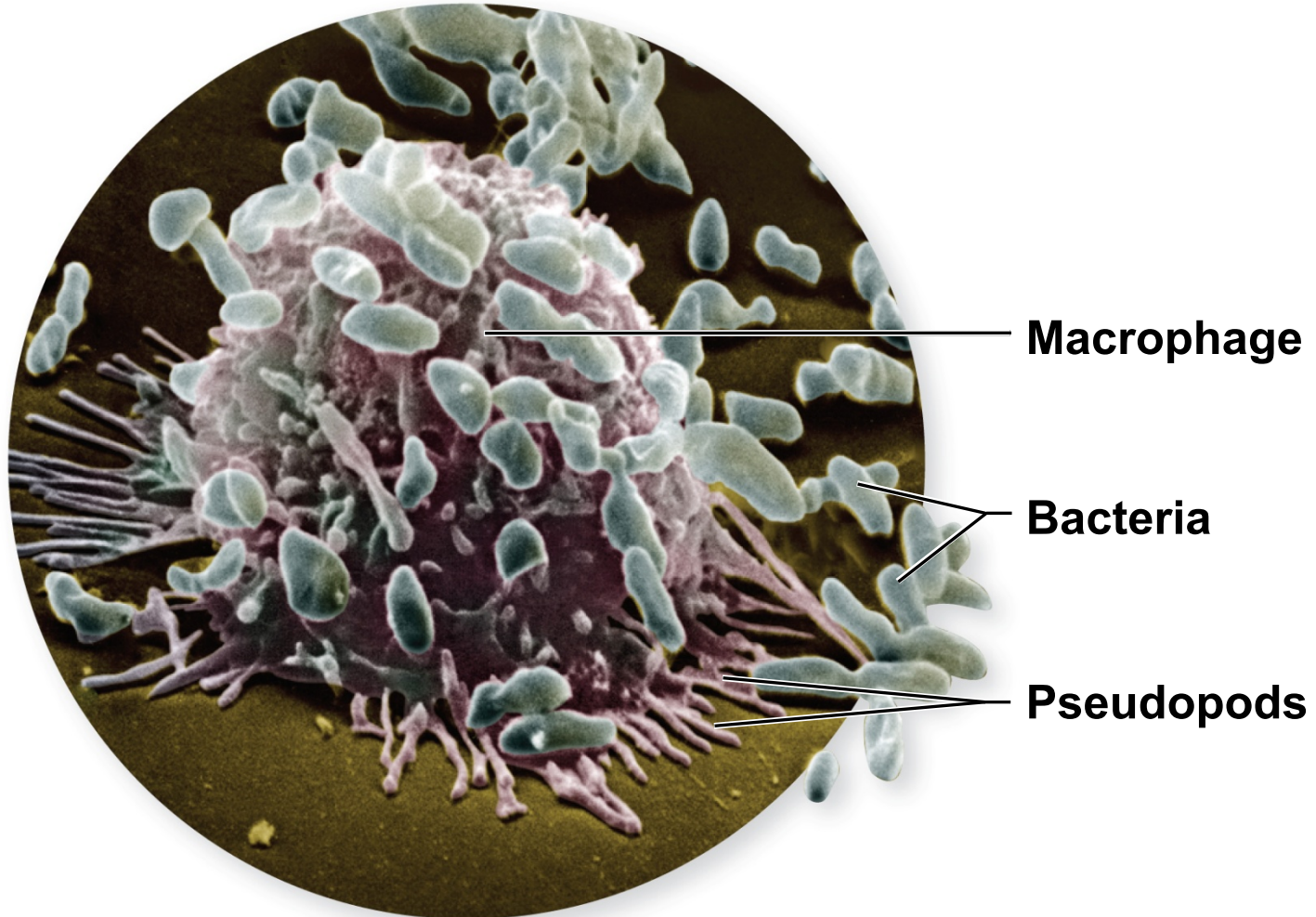


Fig. 21.7

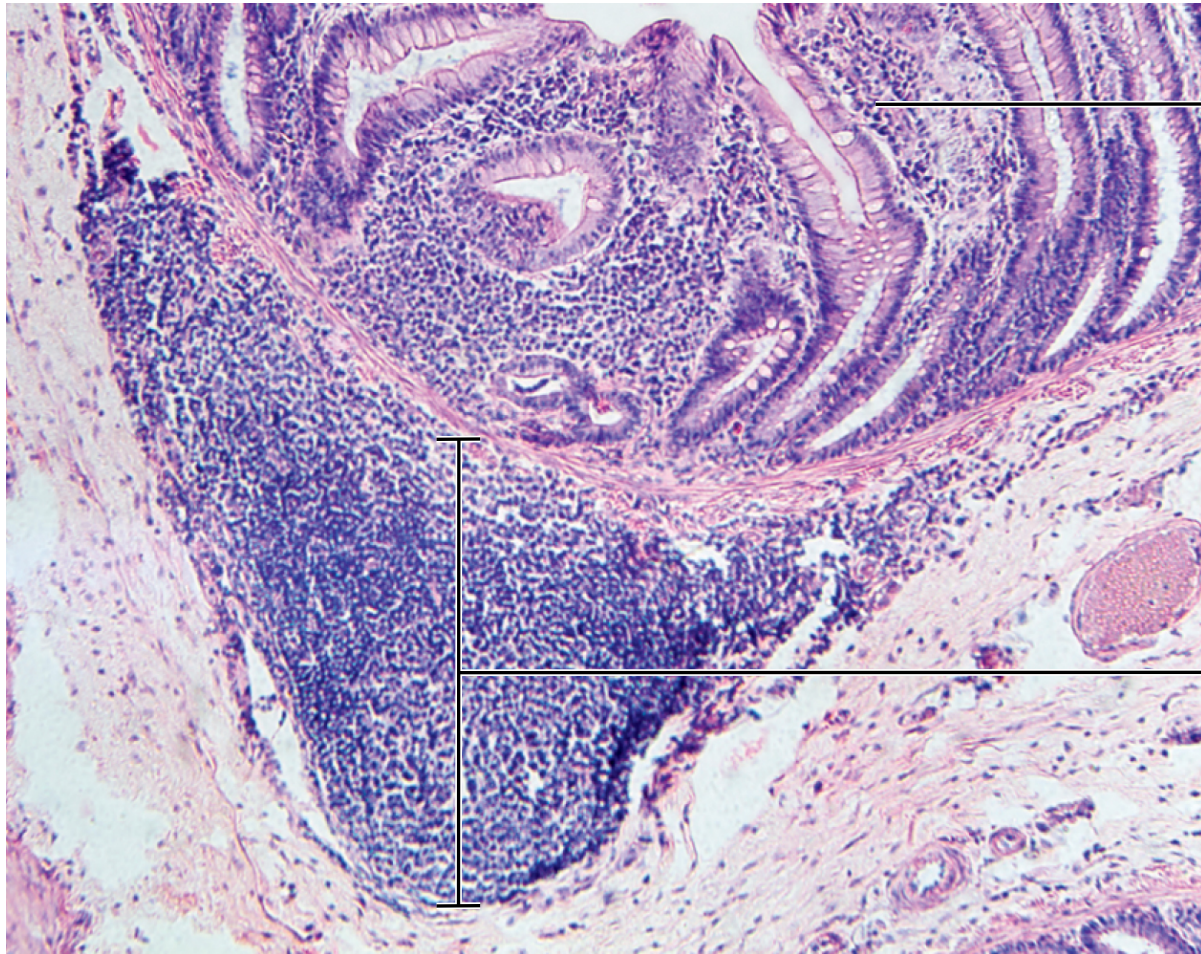
Copyright © McGraw-Hill Education. Permission required for reproduction or display.



©David M. Phillips/Science Source

Fig. 21.8

Copyright © McGraw-Hill Education. Permission required for reproduction or display.



Intestinal villus

**Lymphatic
nodule**

©Garry DeLong/ Science Source

Fig. 21.9

Copyright © McGraw-Hill Education. Permission required for reproduction or display.

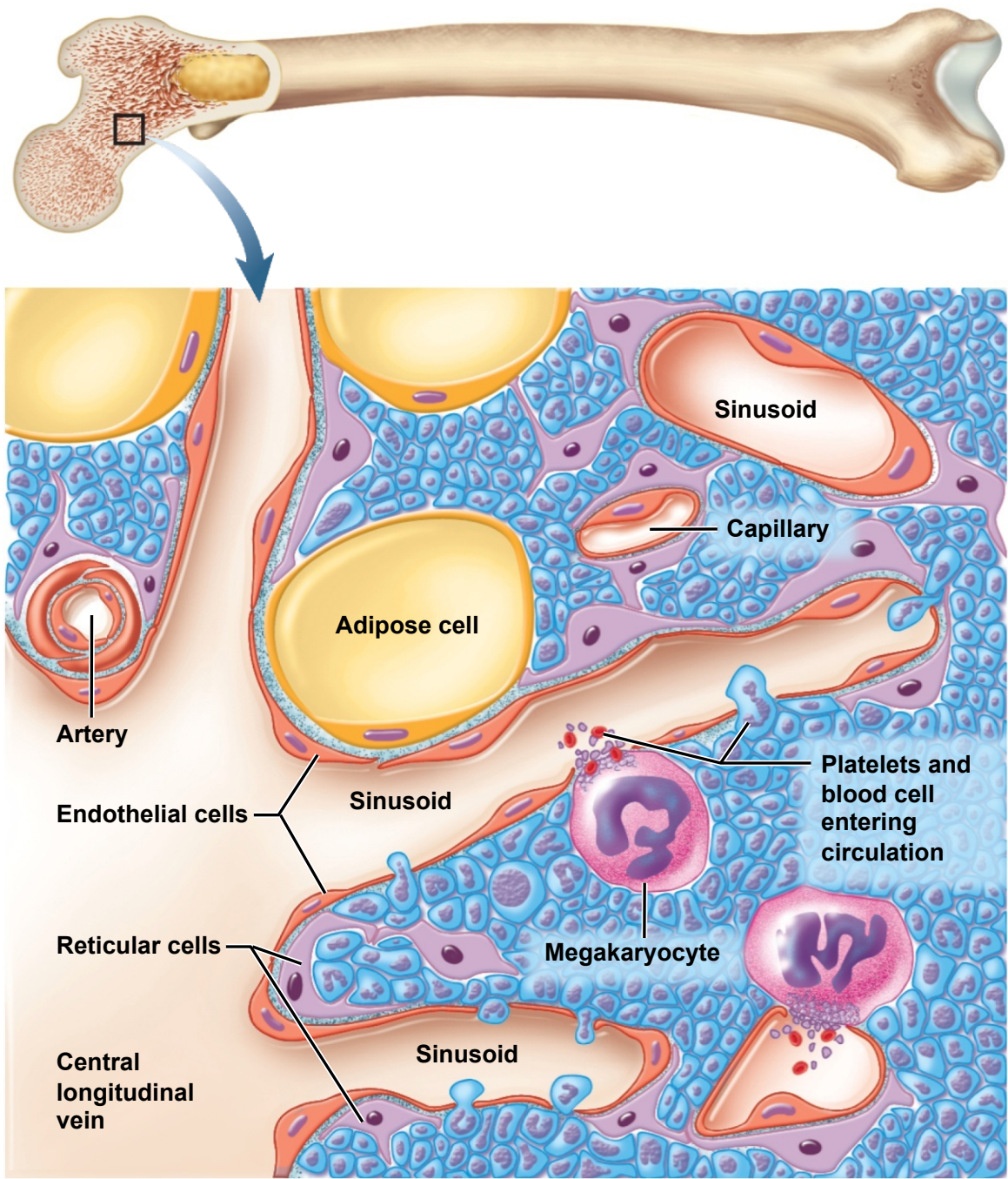
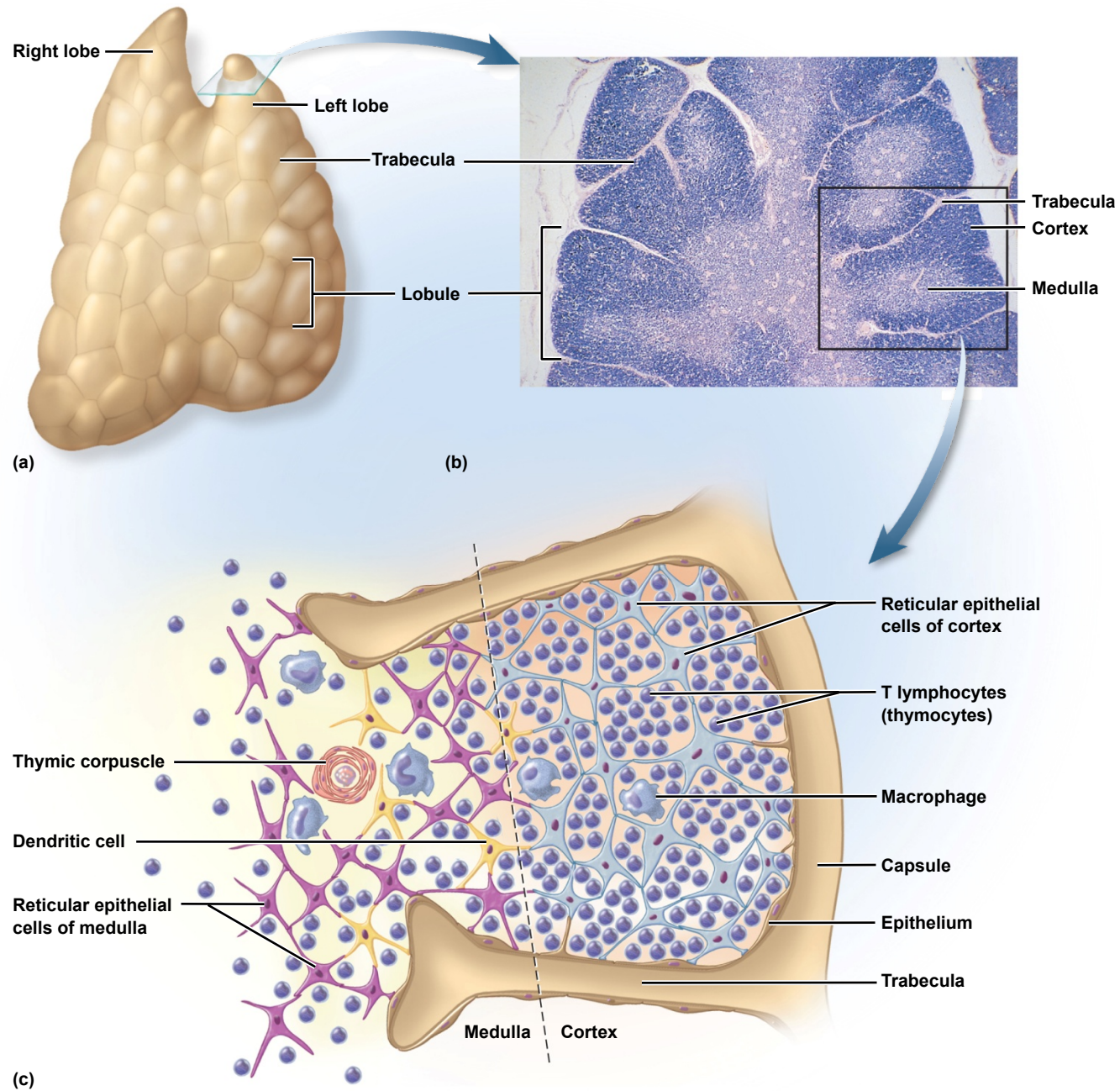


Fig. 21.10

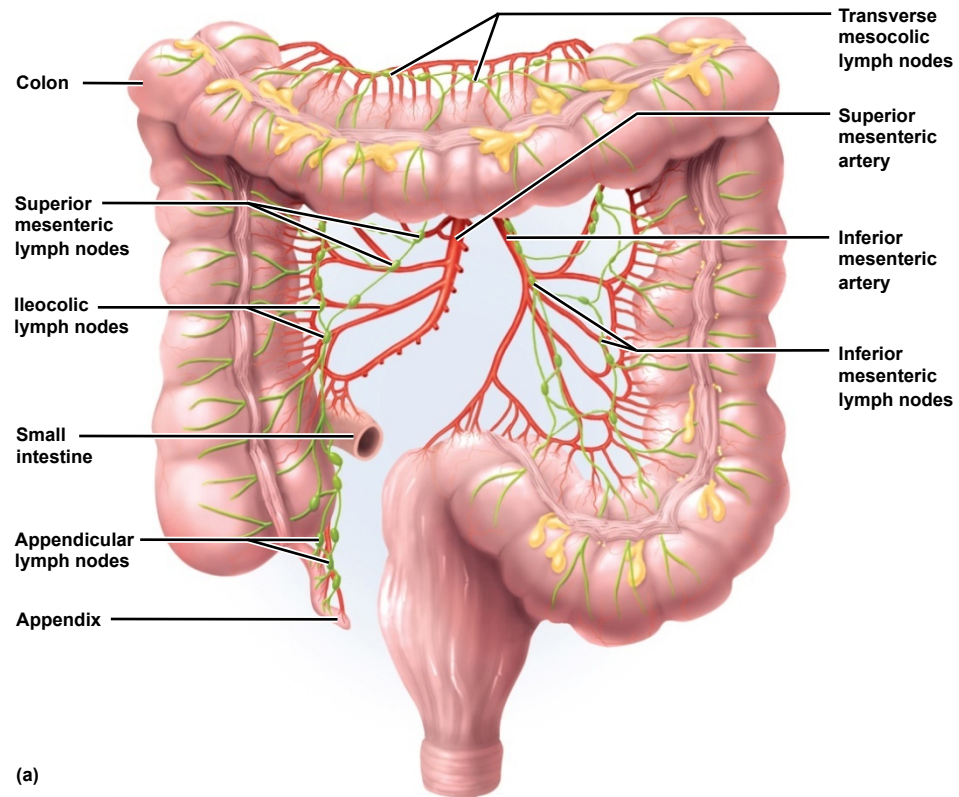
Copyright © McGraw-Hill Education. Permission required for reproduction or display.



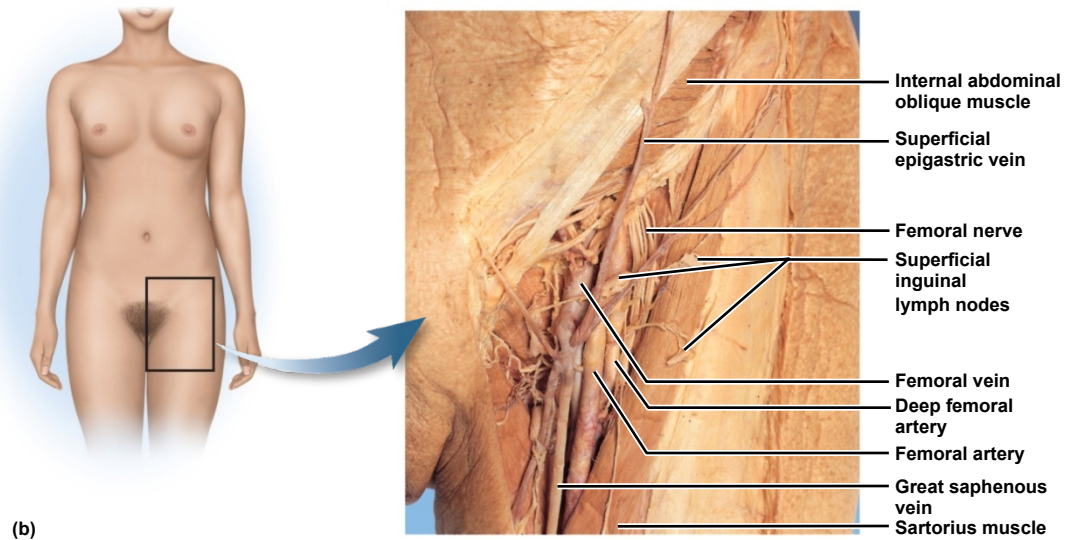
b: ©McGraw-Hill Education/Dennis Strete

Fig. 21.11

Copyright © McGraw-Hill Education. Permission required for reproduction or display.



(a)

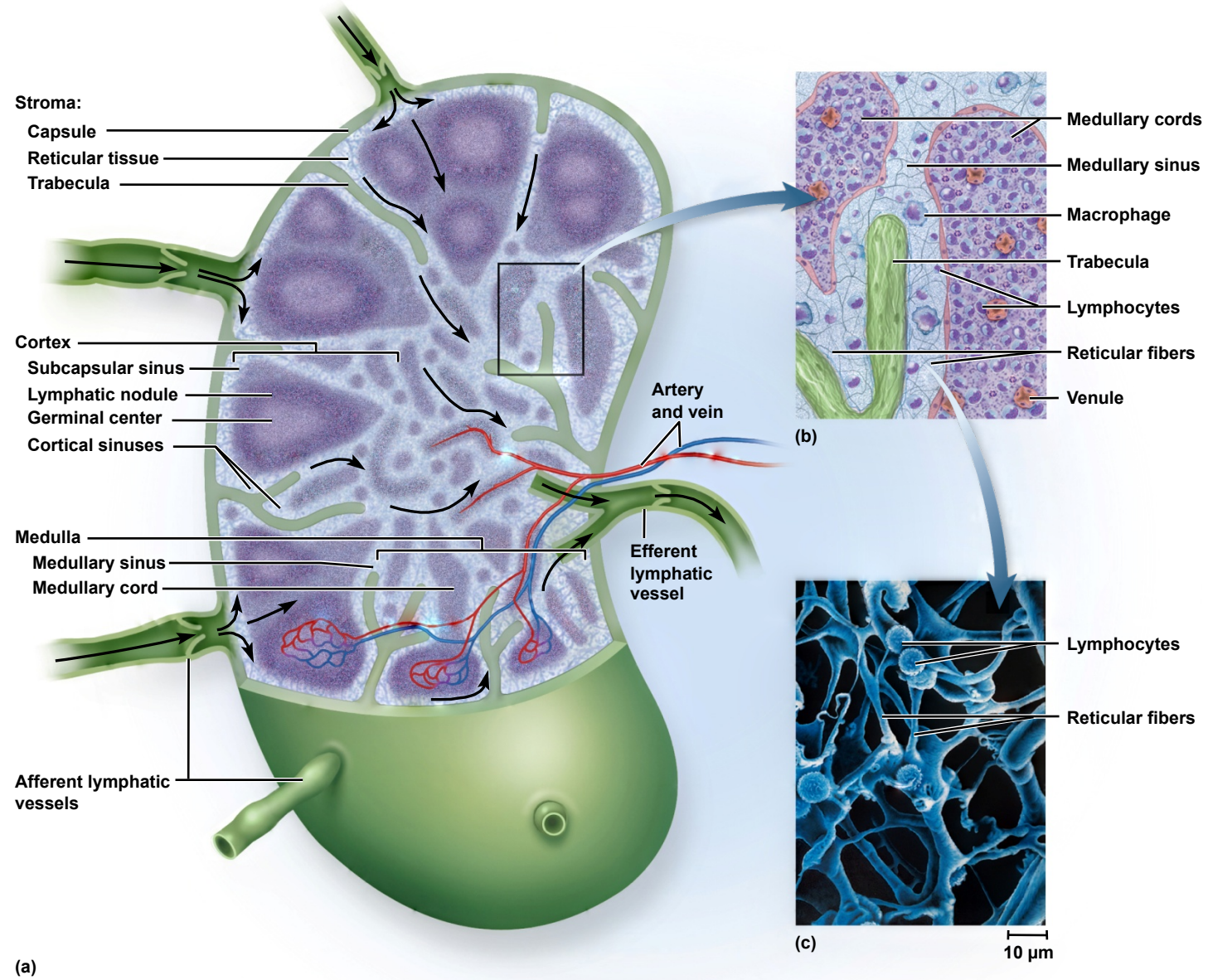


(b)

b: ©McGraw-Hill Education/Rebecca Gray/Don Kincaid, dissections

Fig. 21.12

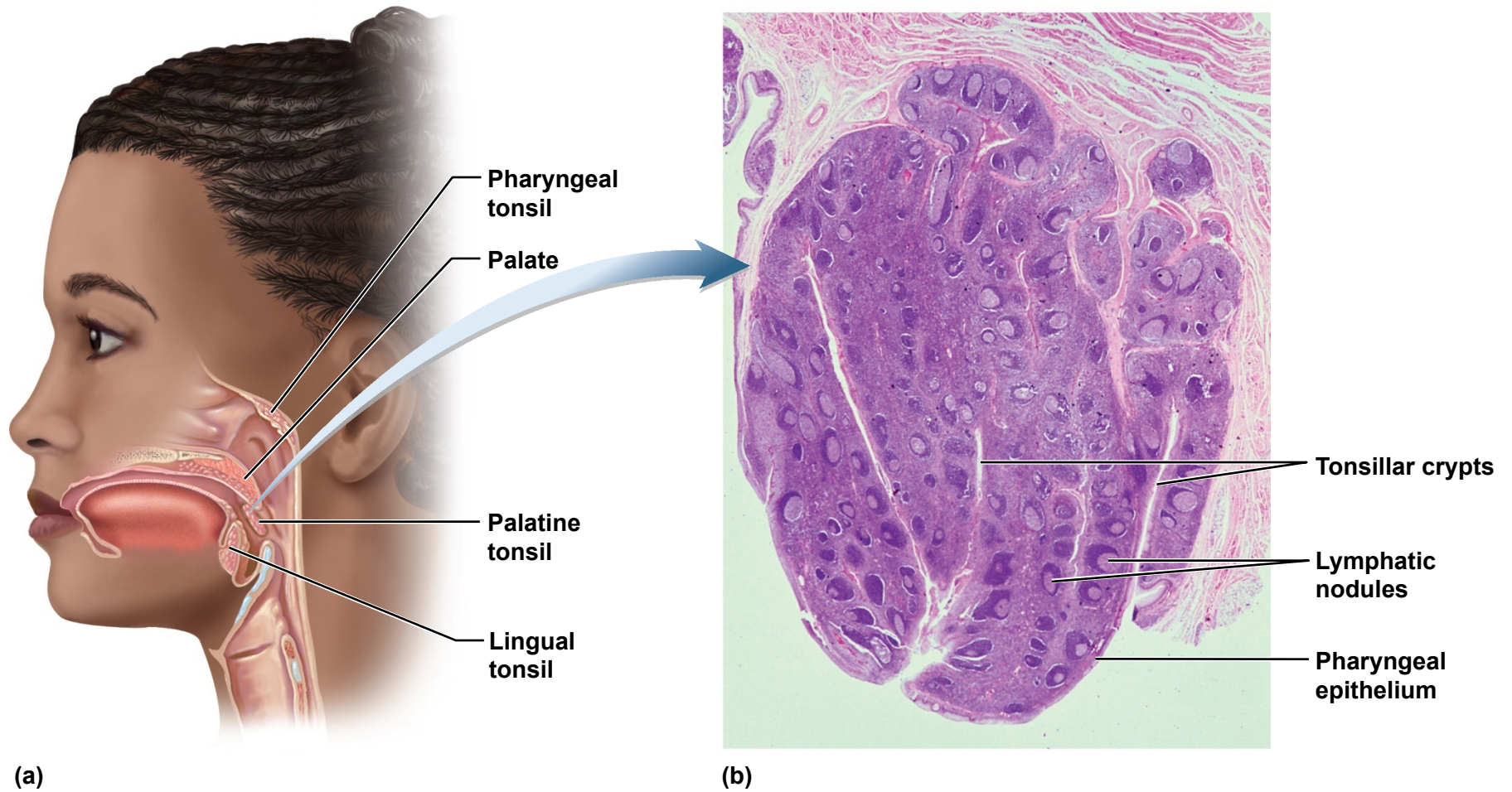
Copyright © McGraw-Hill Education. Permission required for reproduction or display.



c: ©Francis Leroy, Biocosmos/Science Source

Fig. 21.13

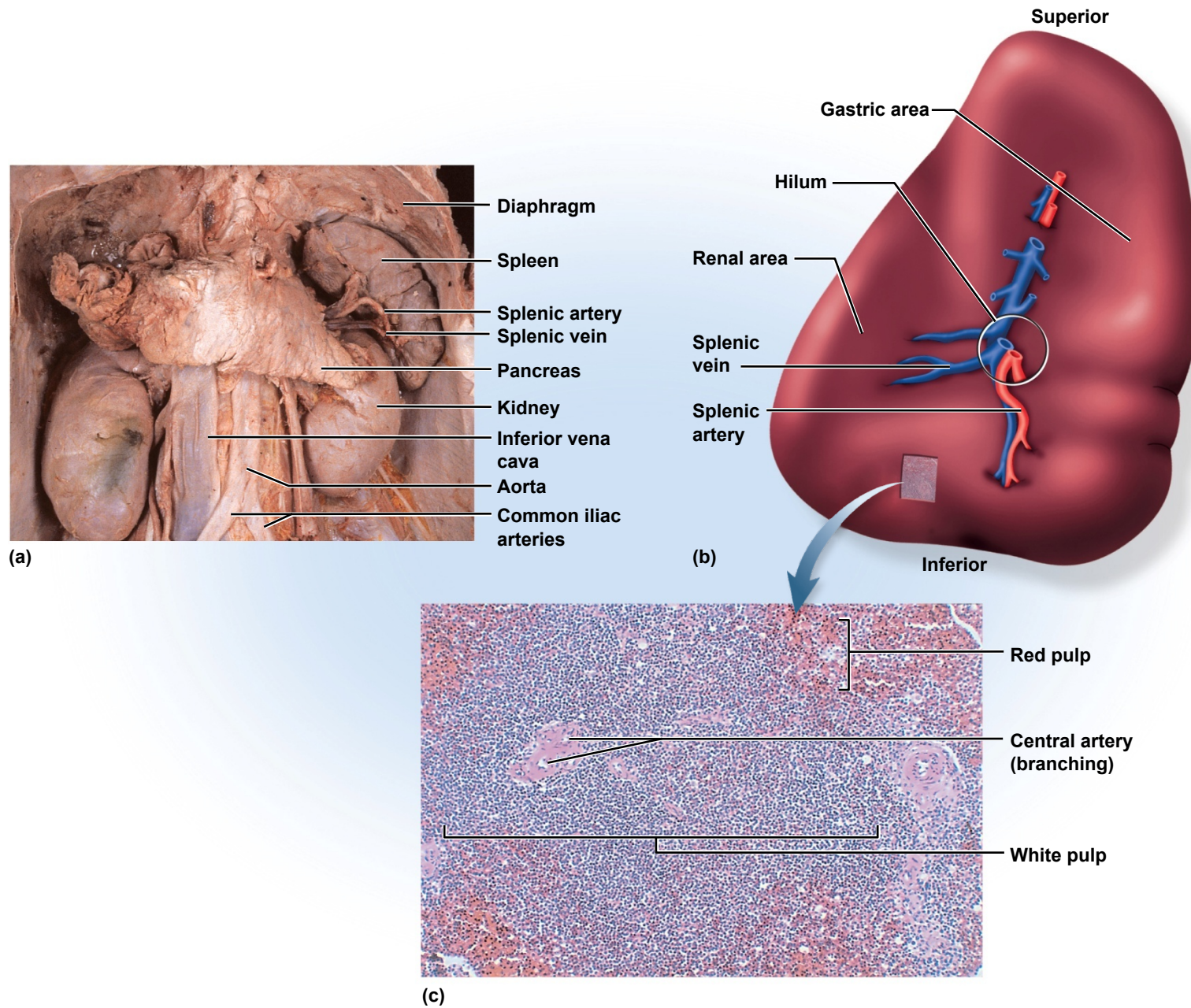
Copyright © McGraw-Hill Education. Permission required for reproduction or display.



b: ©Biophoto Associates/Science Source

Fig. 21.14

Copyright © McGraw-Hill Education. Permission required for reproduction or display.



a: ©McGraw-Hill Education/Dennis Strete; c: ©McGraw-Hill Education/AI Telser

Fig. 21.15

Copyright © McGraw-Hill Education. Permission required for reproduction or display.

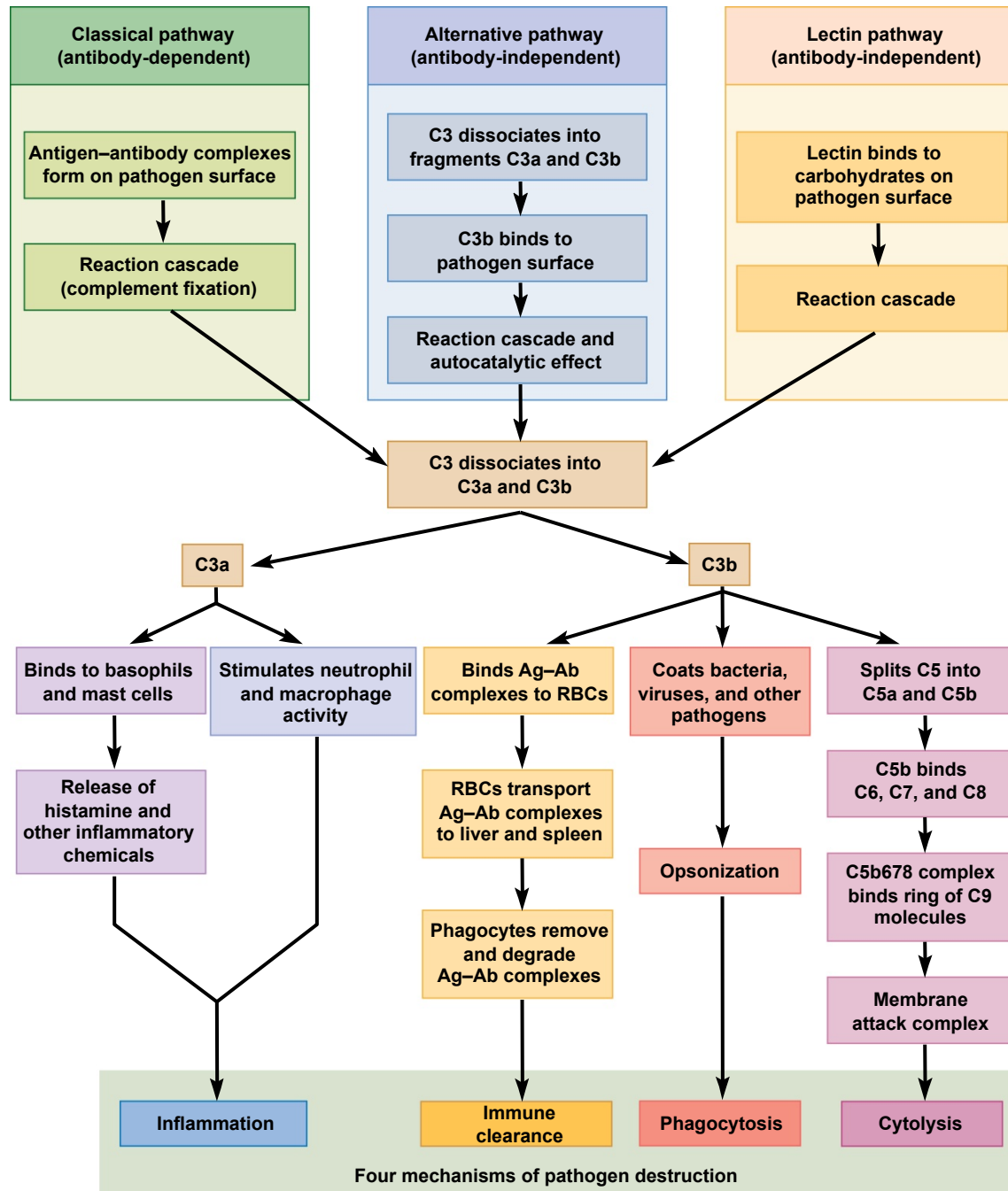


Fig. 21.16

Copyright © McGraw-Hill Education. Permission required for reproduction or display.

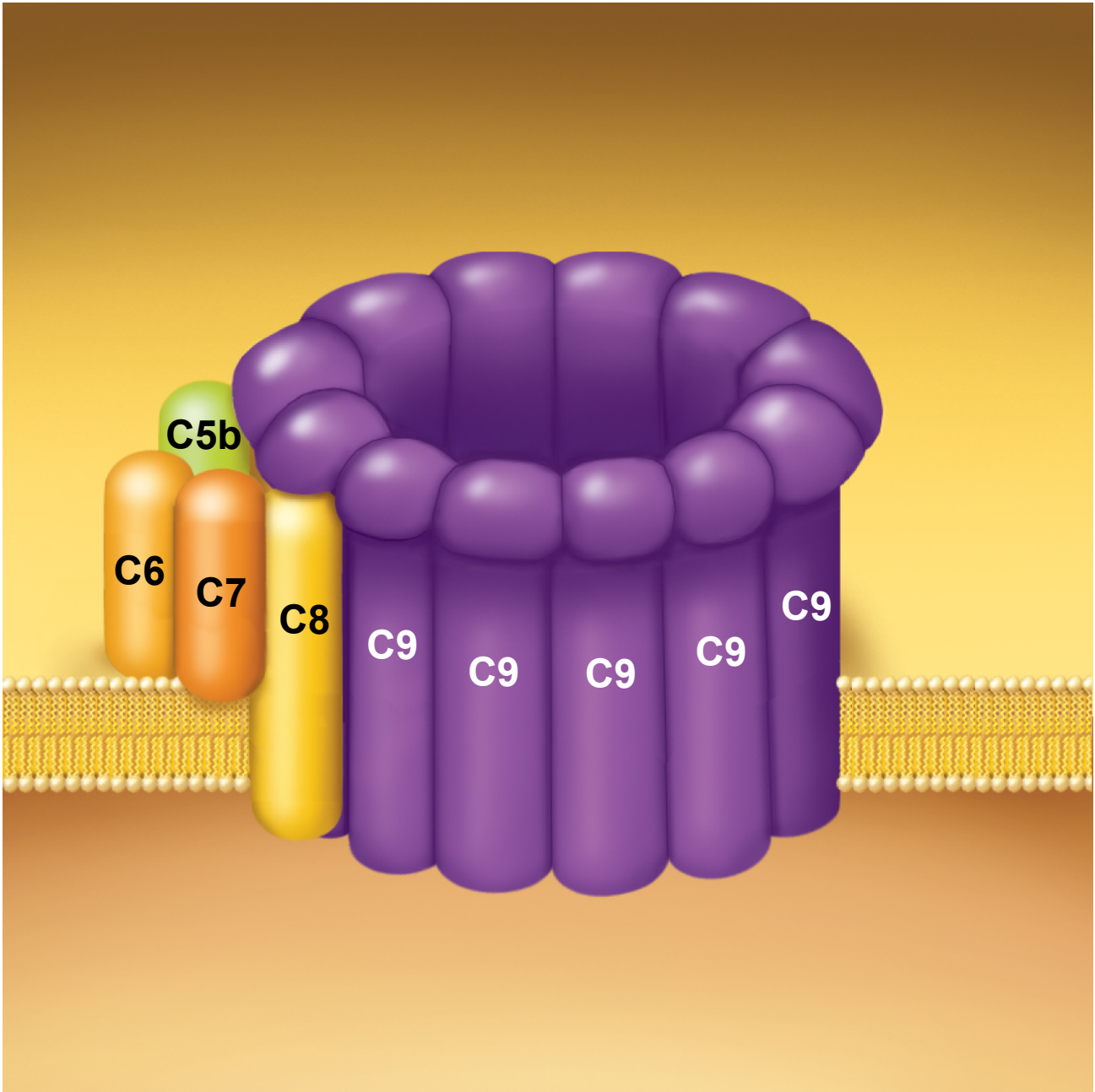


Fig. 21.17

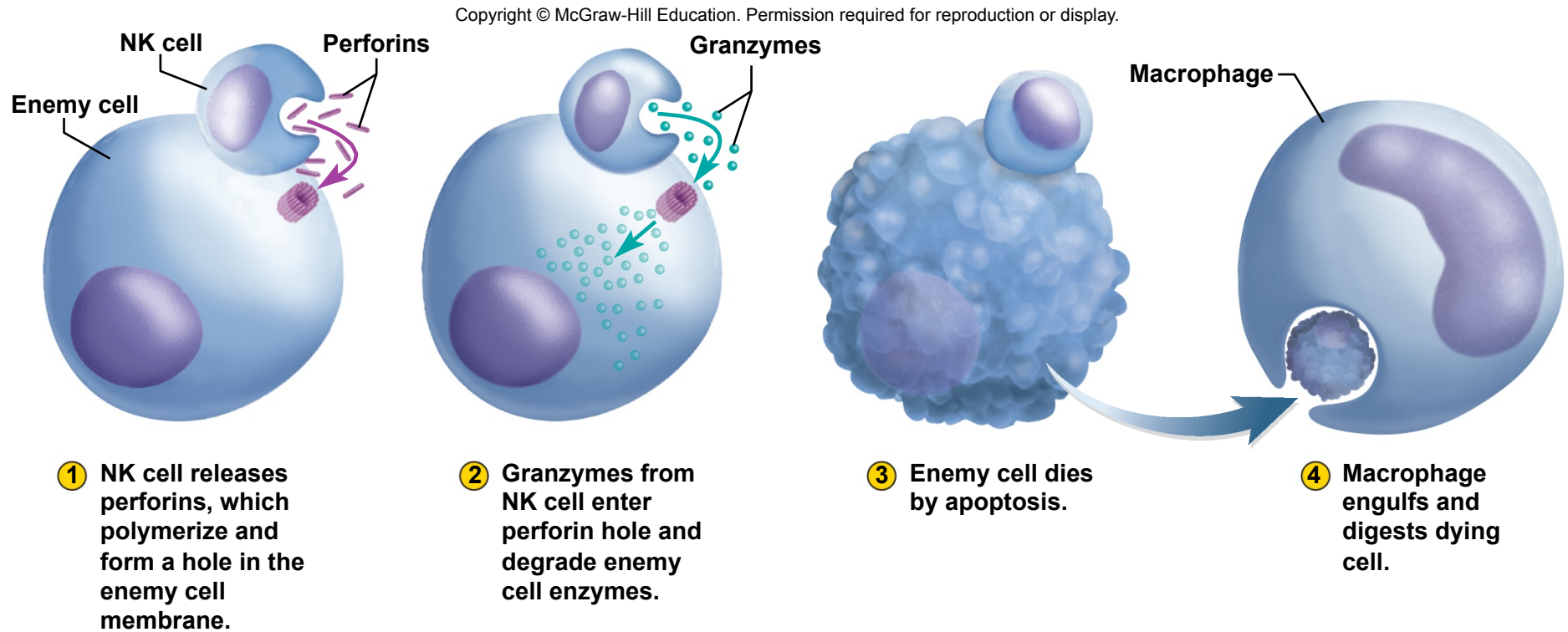


Fig. 21.18

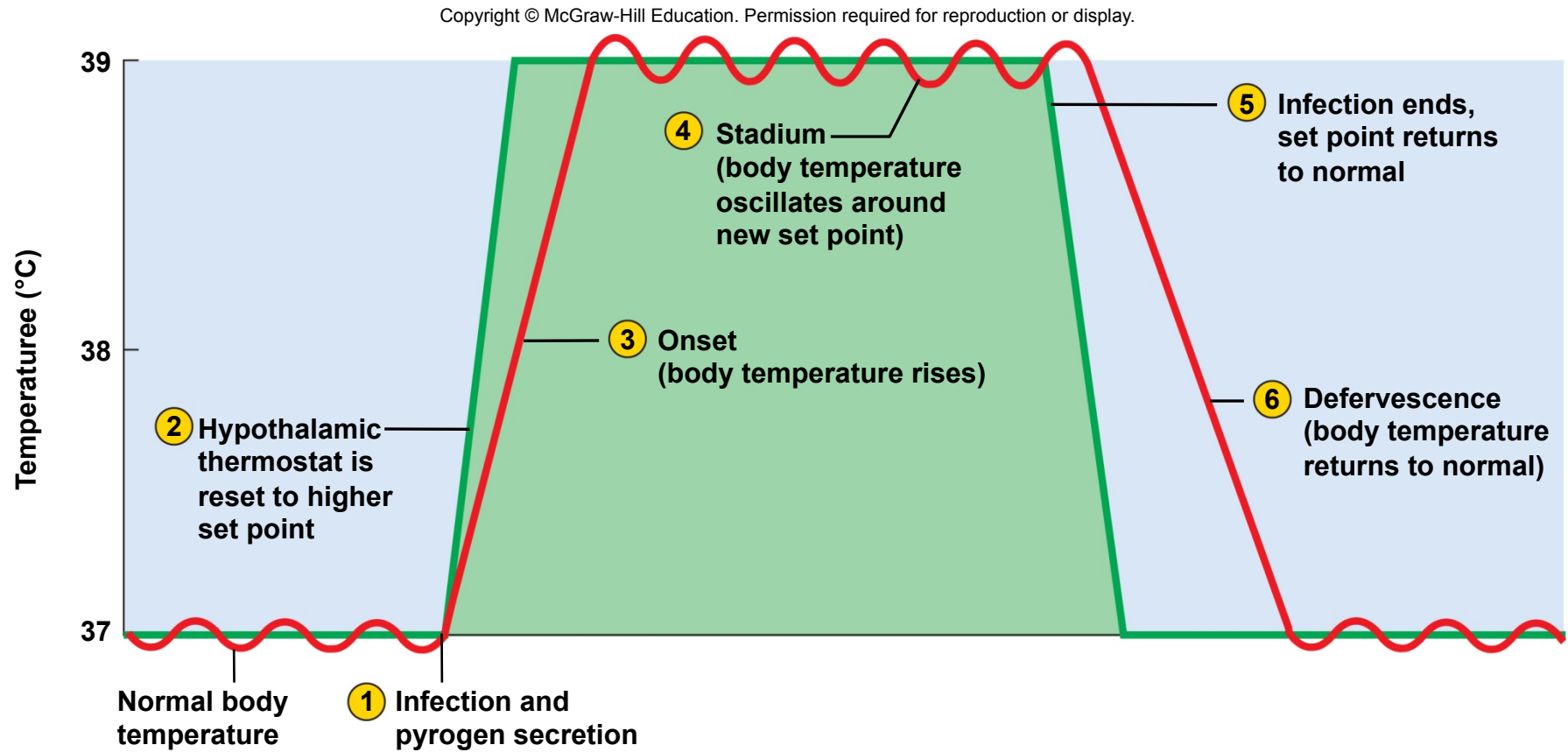


Fig. 21.19

Copyright © McGraw-Hill Education. Permission required for reproduction or display.

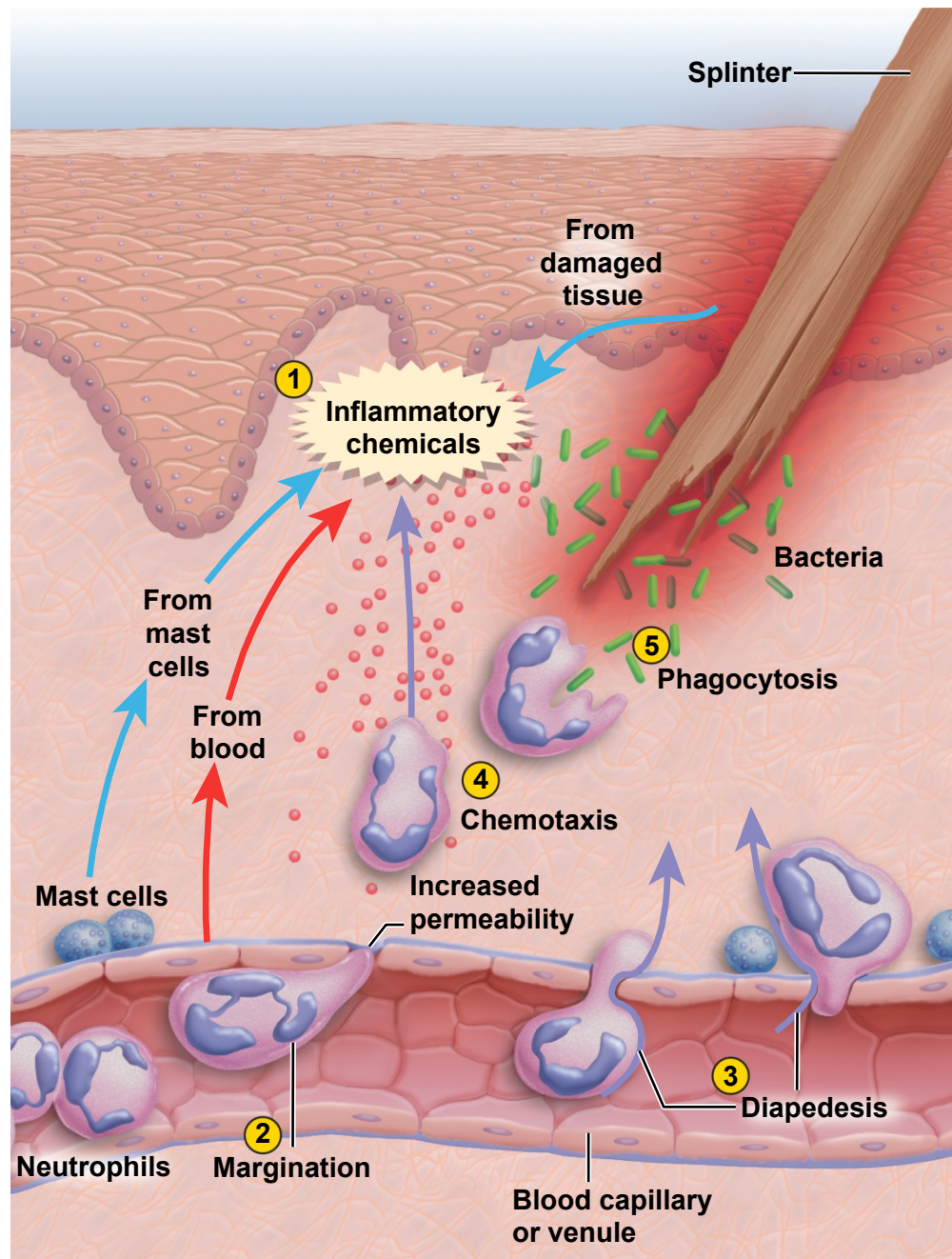


Fig. 21.20

Copyright © McGraw-Hill Education. Permission required for reproduction or display.

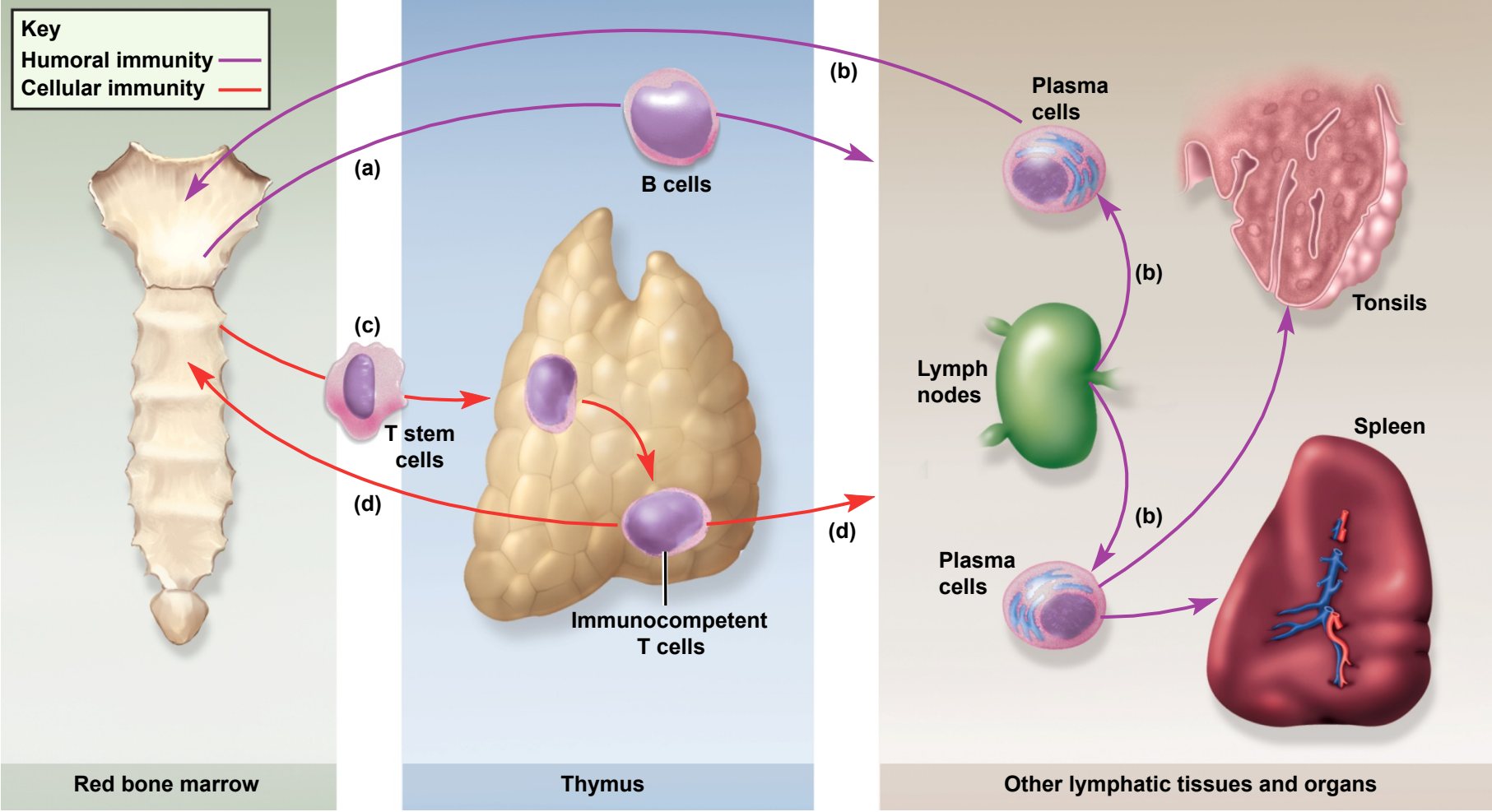
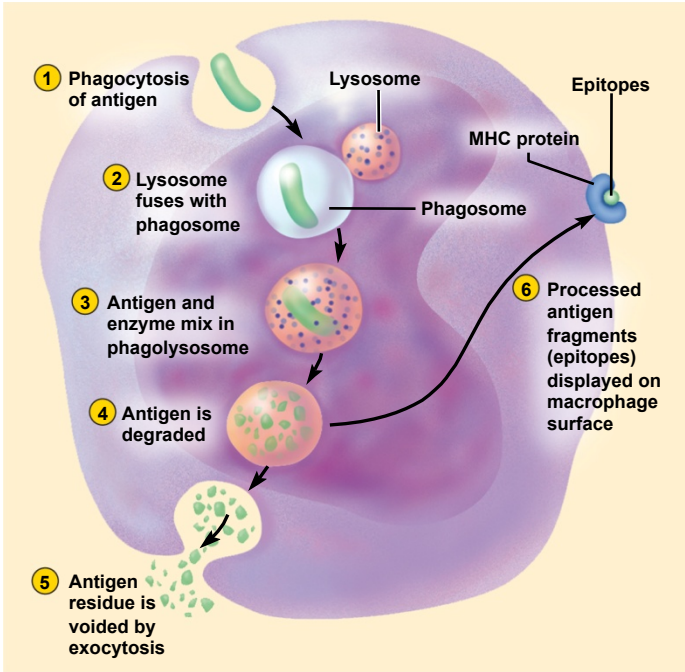
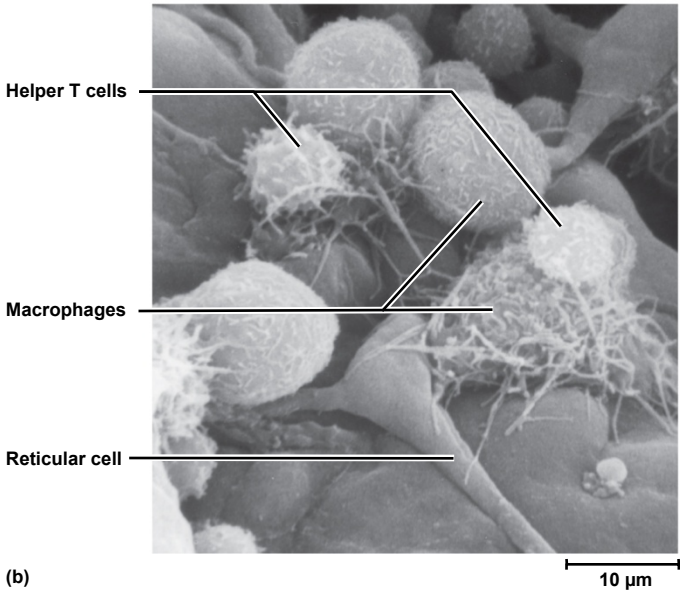


Fig. 21.21

Copyright © McGraw-Hill Education. Permission required for reproduction or display.



(a)



(b)

b: © Dr. Kessel & Dr. Kardon/Tissues and Organs/Visuals Unlimited, Inc

Fig. 21.22

Copyright © McGraw-Hill Education. Permission required for reproduction or display.

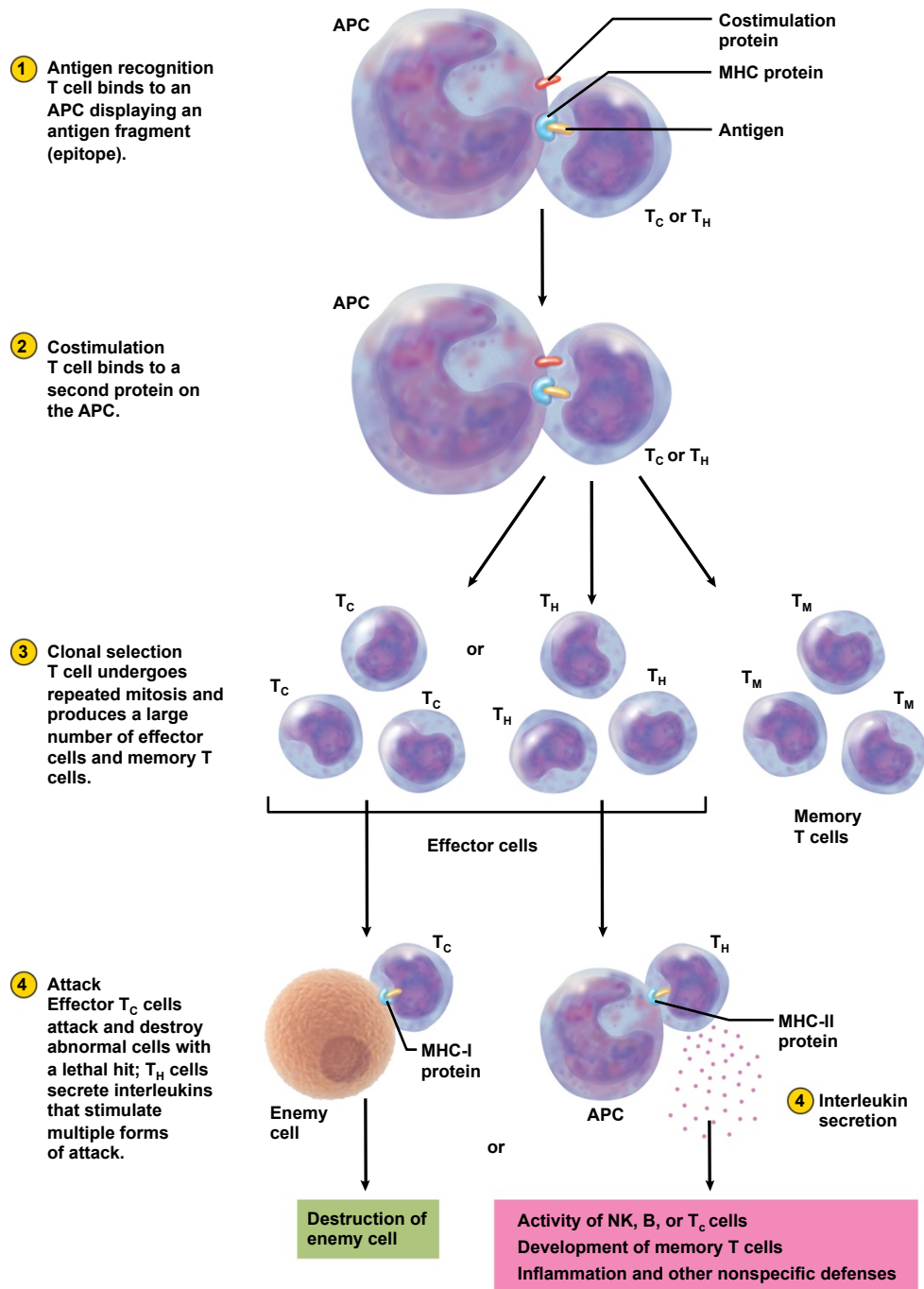


Fig. 21.23

Copyright © McGraw-Hill Education. Permission required for reproduction or display.

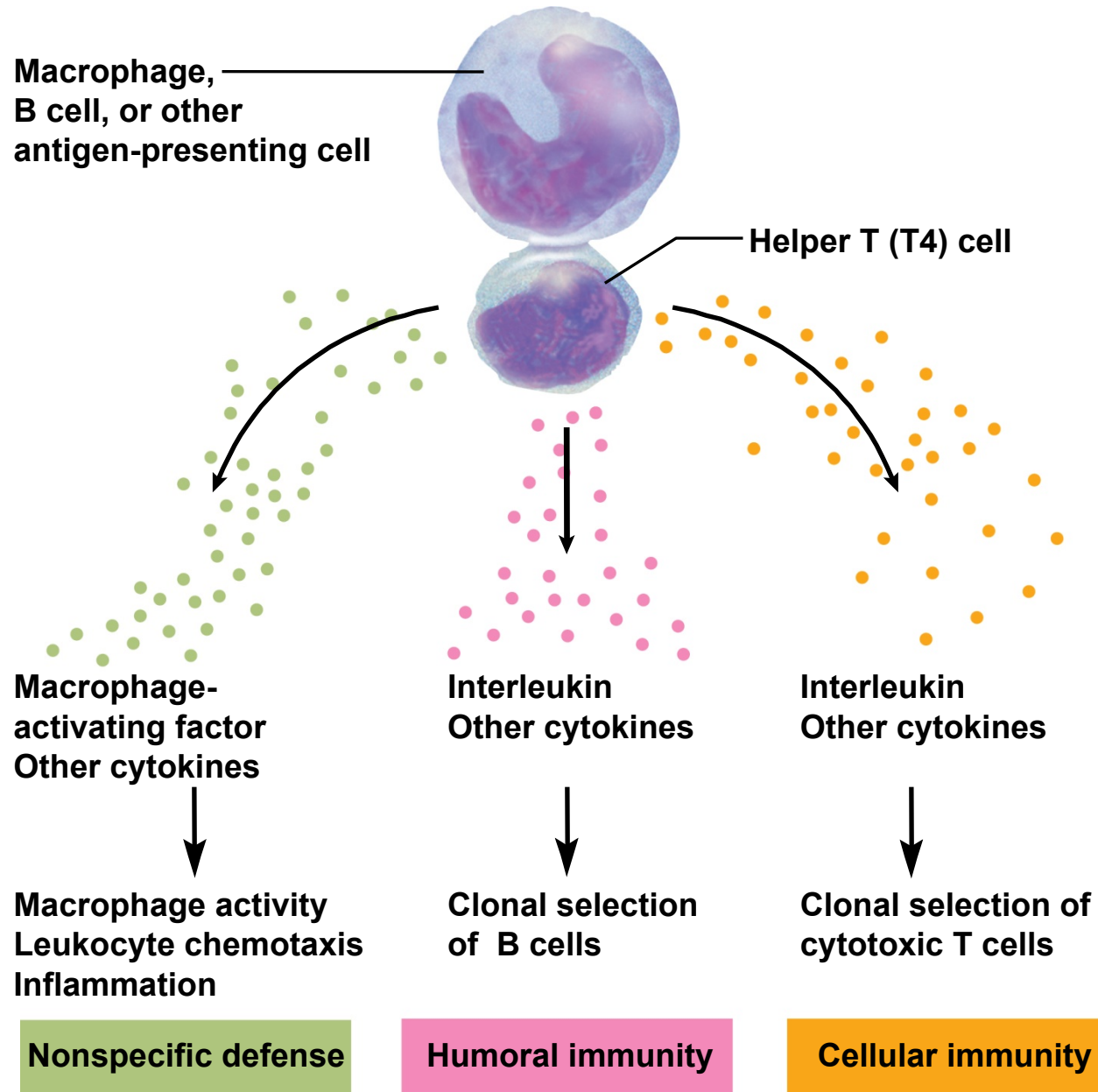


Fig. 21.25

Copyright © McGraw-Hill Education. Permission required for reproduction or display.

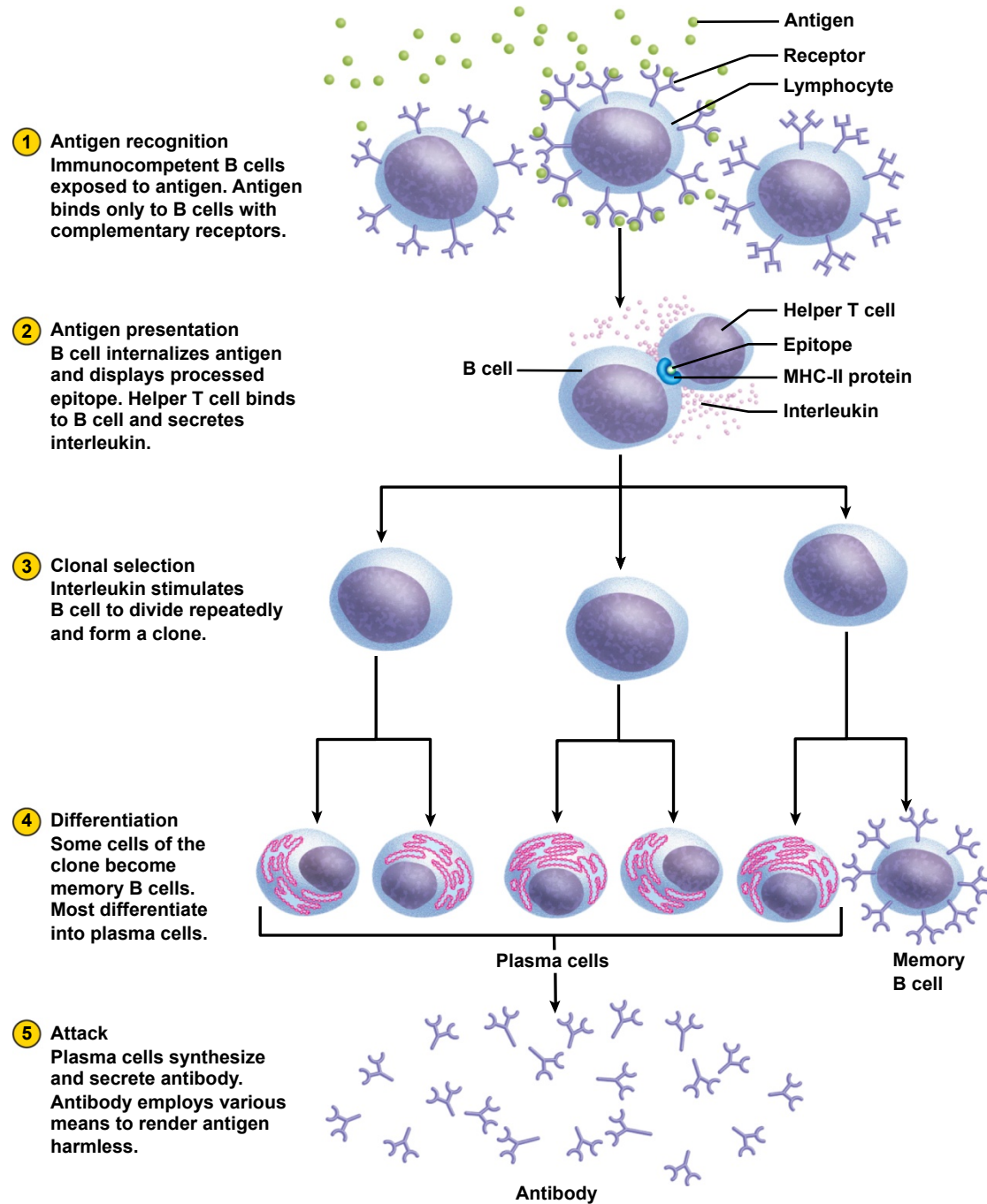
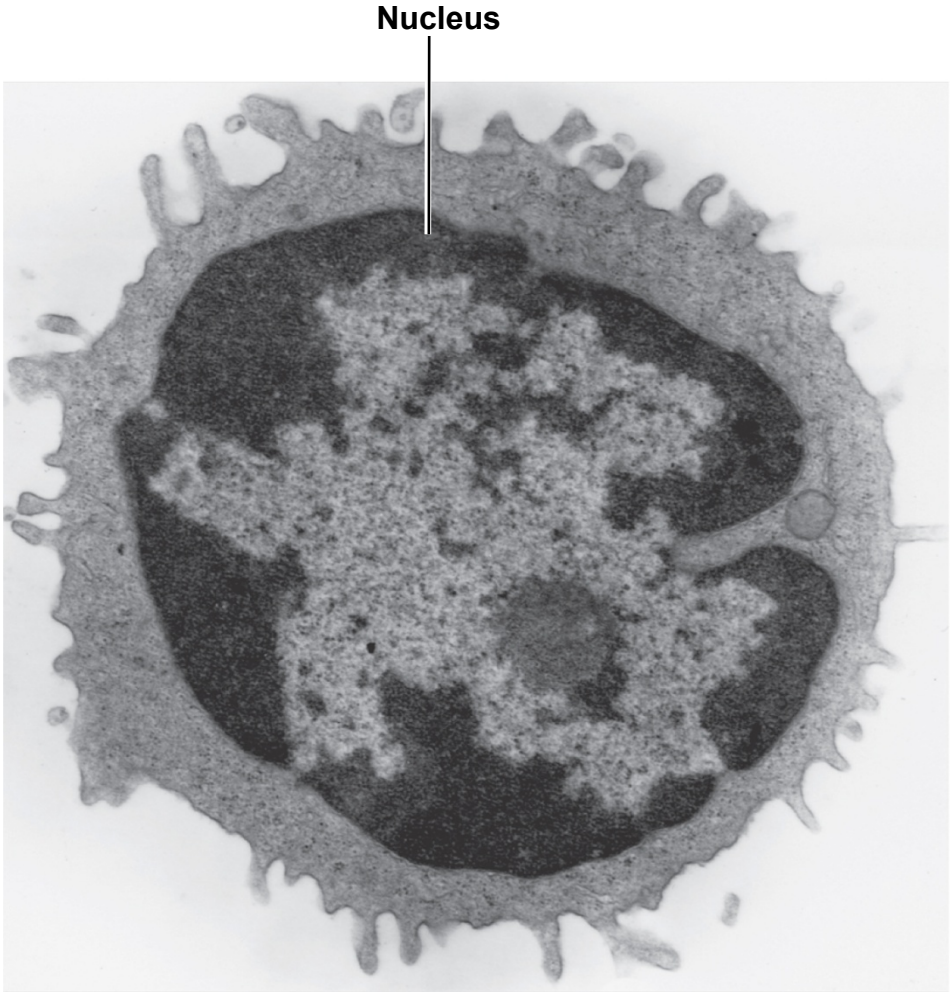
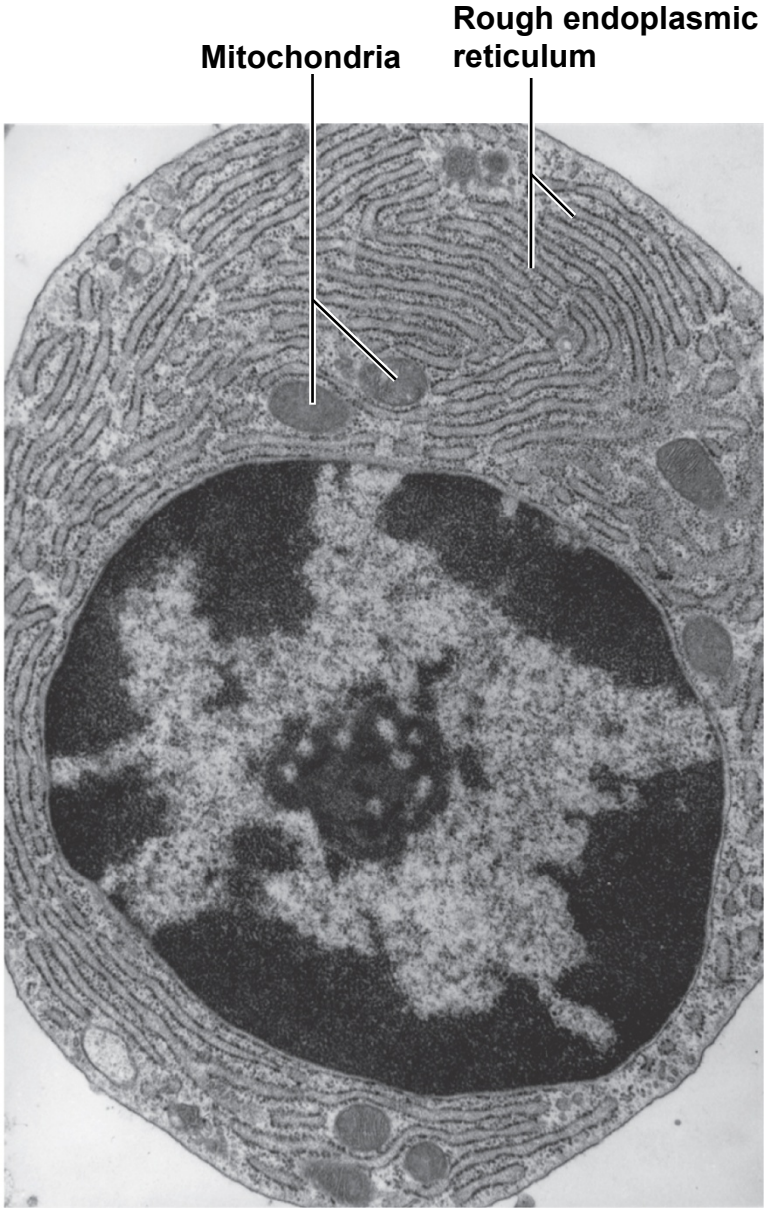


Fig. 21.26

Copyright © McGraw-Hill Education. Permission required for reproduction or display.



(a) B cell



(b) Plasma cell

a,b: © Dr. Don W. Fawcett/Visuals Unlimited

Fig. 21.27

Copyright © McGraw-Hill Education. Permission required for reproduction or display.

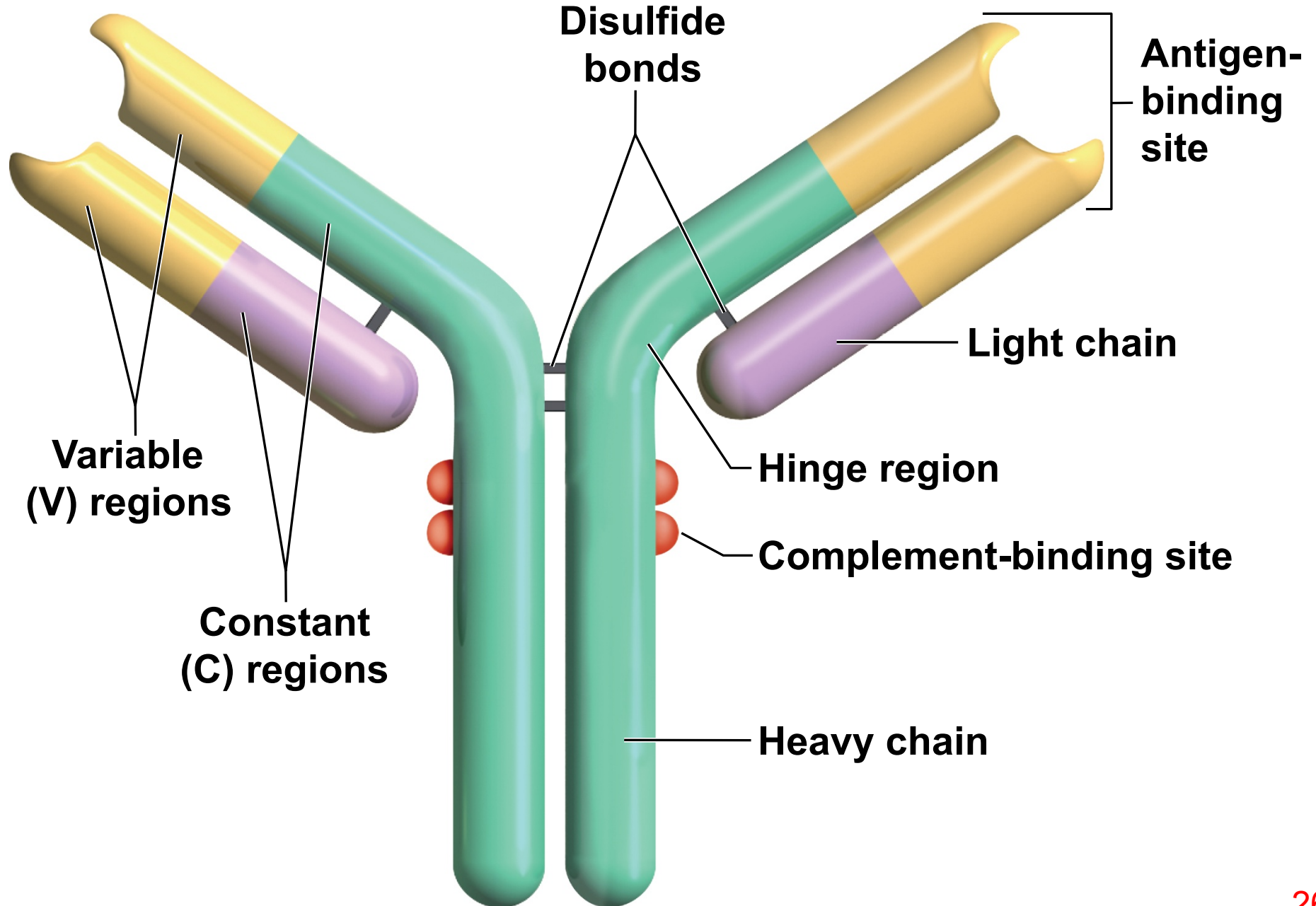
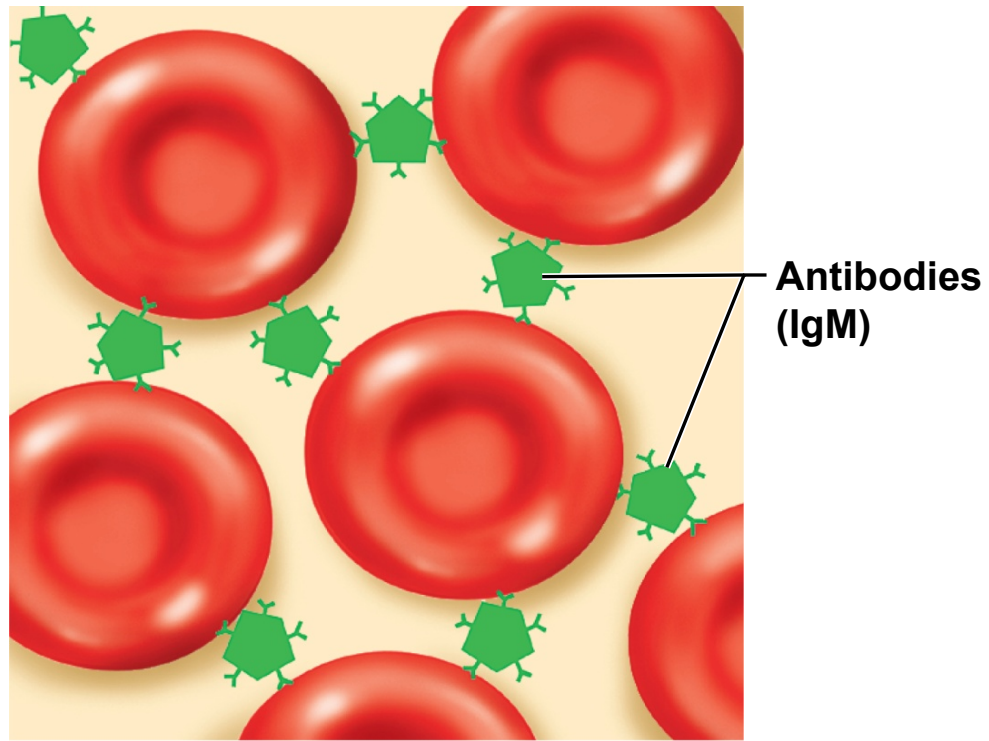
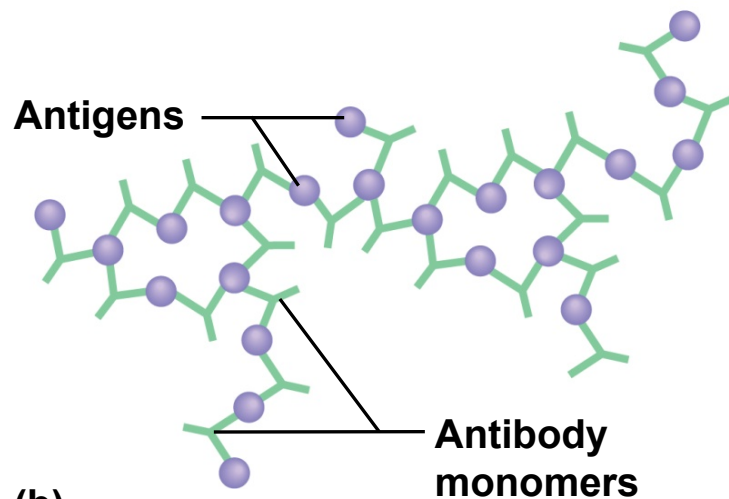


Fig. 21.28

Copyright © McGraw-Hill Education. Permission required for reproduction or display.



(a)



(b)

Fig. 21.29

Copyright © McGraw-Hill Education. Permission required for reproduction or display.

