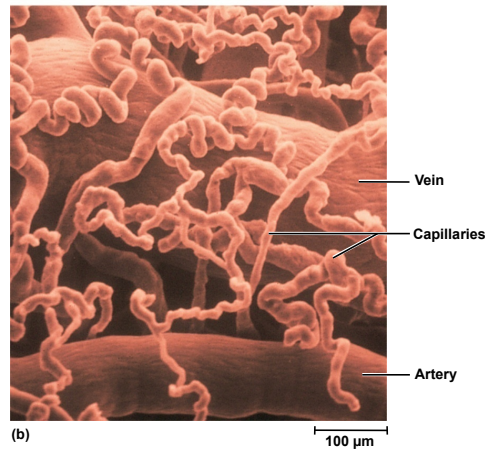
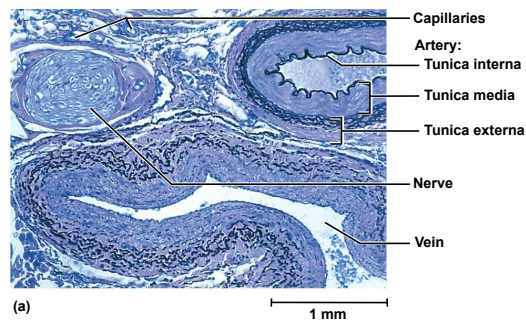


Fig. 20.1

Copyright © McGraw-Hill Education. Permission required for reproduction or display.

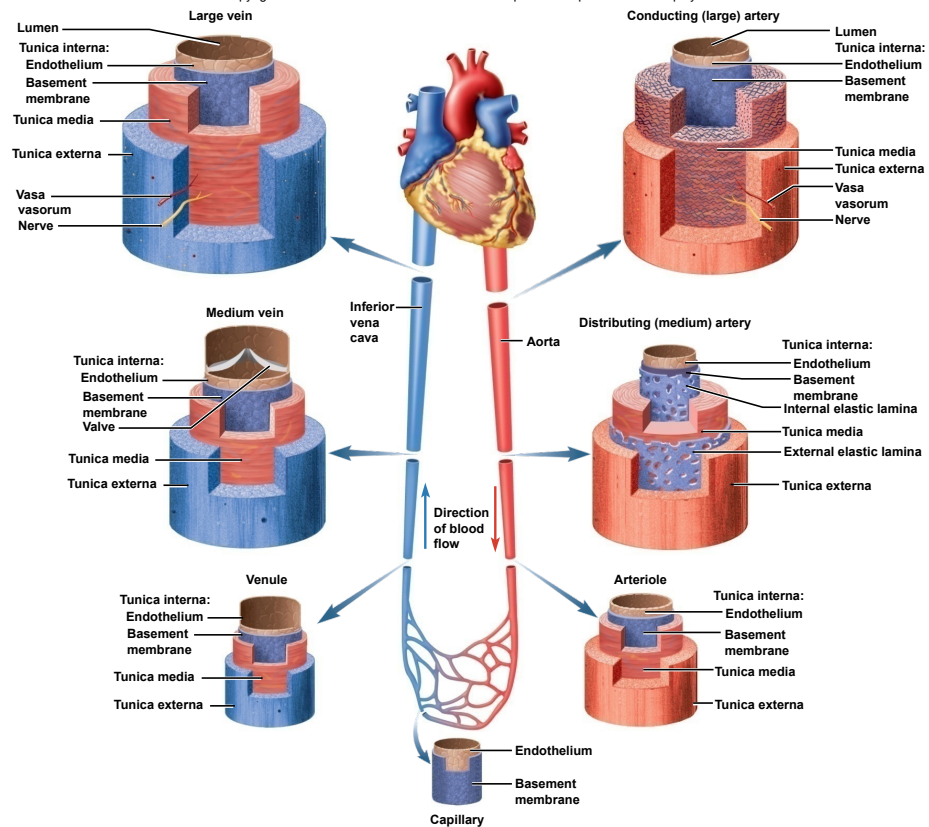


a: ©The McGraw-Hill Companies, Inc.; b: ©Wolf H. Fahrenbach/Visuals Unlimited

1

Fig. 20.2

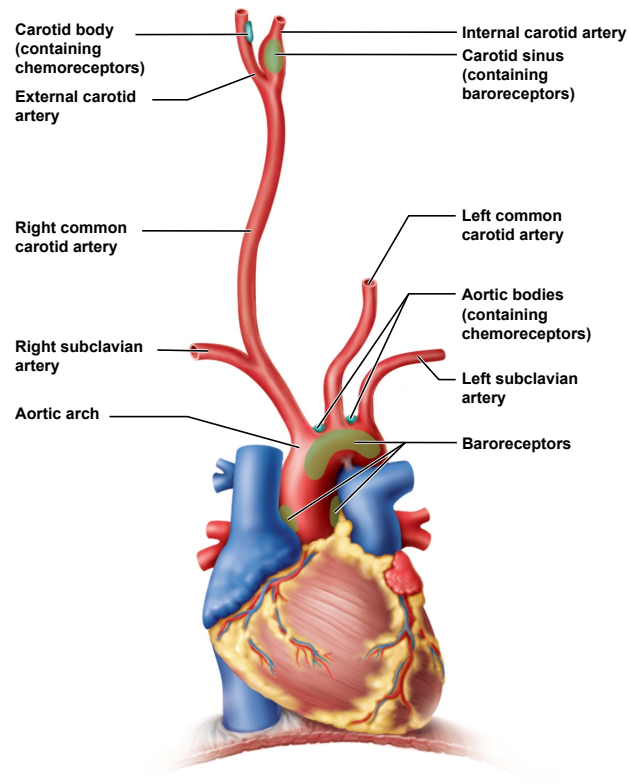
Copyright © McGraw-Hill Education. Permission required for reproduction or display.



2

Fig. 20.3

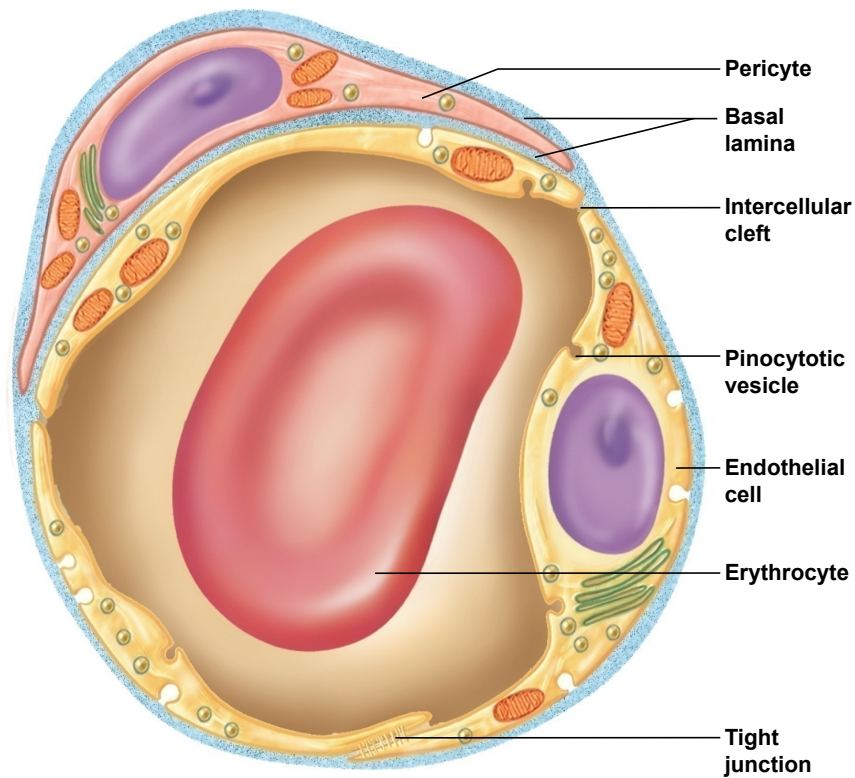
Copyright © McGraw-Hill Education. Permission required for reproduction or display.



3

Fig. 20.4

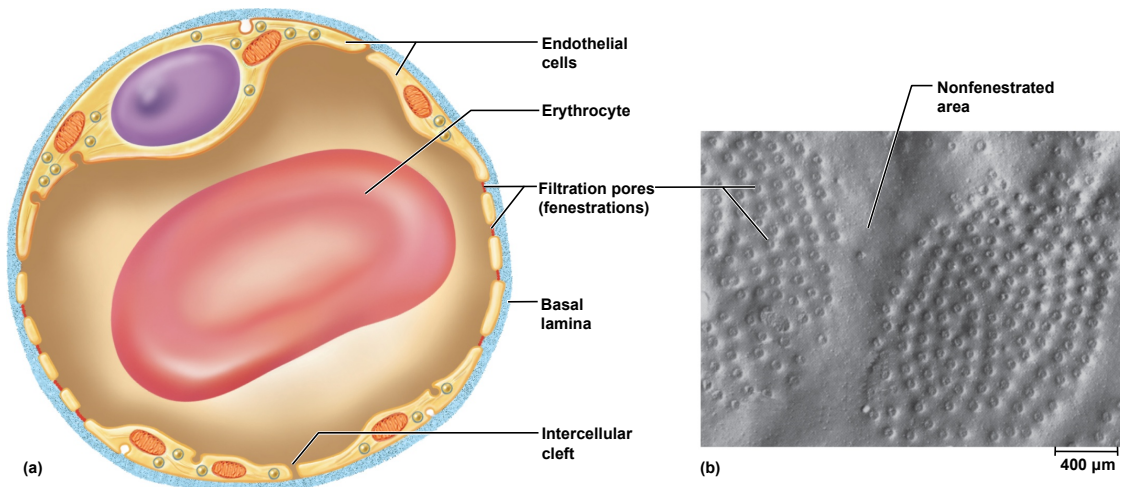
Copyright © McGraw-Hill Education. Permission required for reproduction or display.



4

Fig. 20.5

Copyright © McGraw-Hill Education. Permission required for reproduction or display.

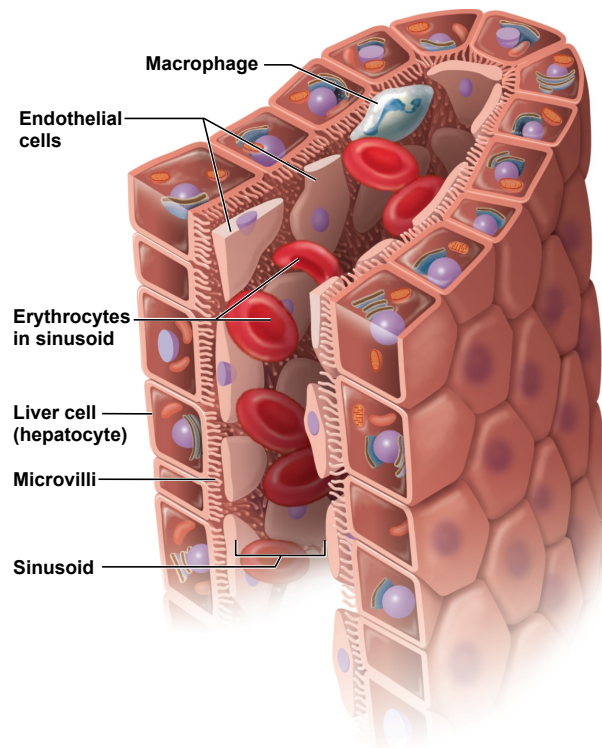


b: Courtesy of S. McNutt

5

Fig. 20.6

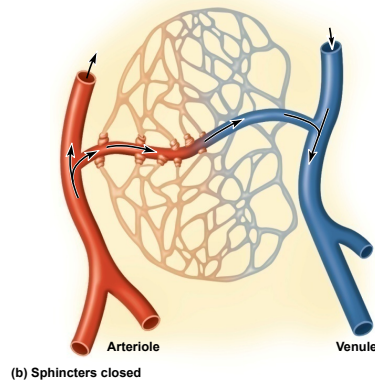
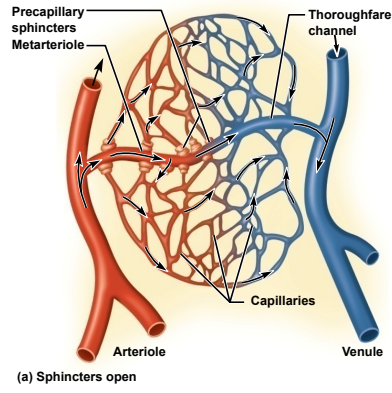
Copyright © McGraw-Hill Education. Permission required for reproduction or display.



6

Fig. 20.7

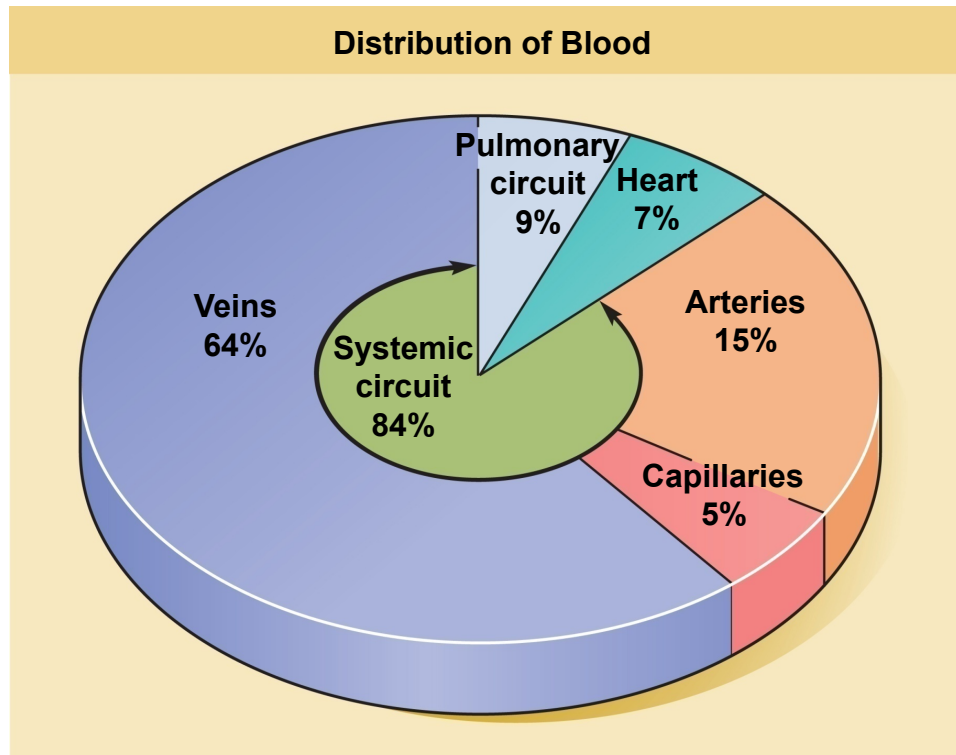
Copyright © McGraw-Hill Education. Permission required for reproduction or display.



7

Fig. 20.8

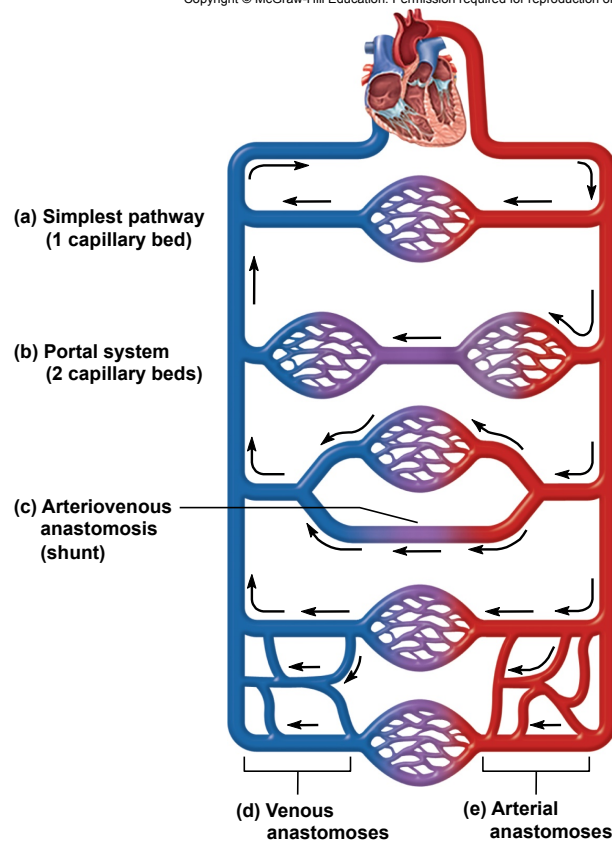
Copyright © McGraw-Hill Education. Permission required for reproduction or display.



8

Fig. 20.9

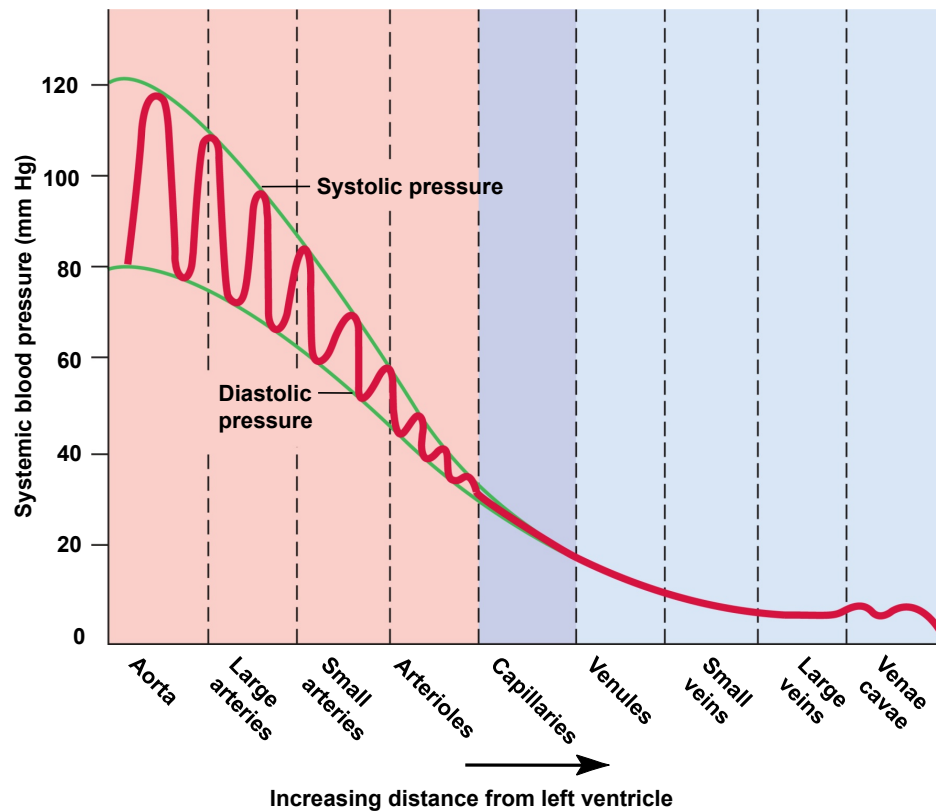
Copyright © McGraw-Hill Education. Permission required for reproduction or display.



9

Fig. 20.10

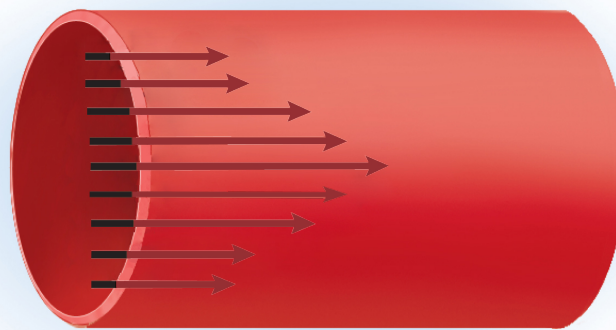
Copyright © McGraw-Hill Education. Permission required for reproduction or display.



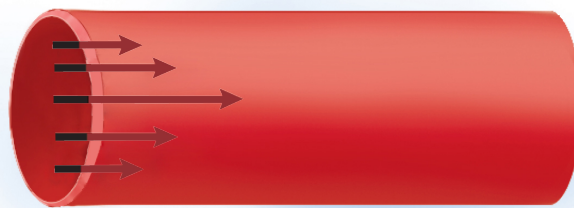
10

Fig. 20.11

Copyright © McGraw-Hill Education. Permission required for reproduction or display.



(a)

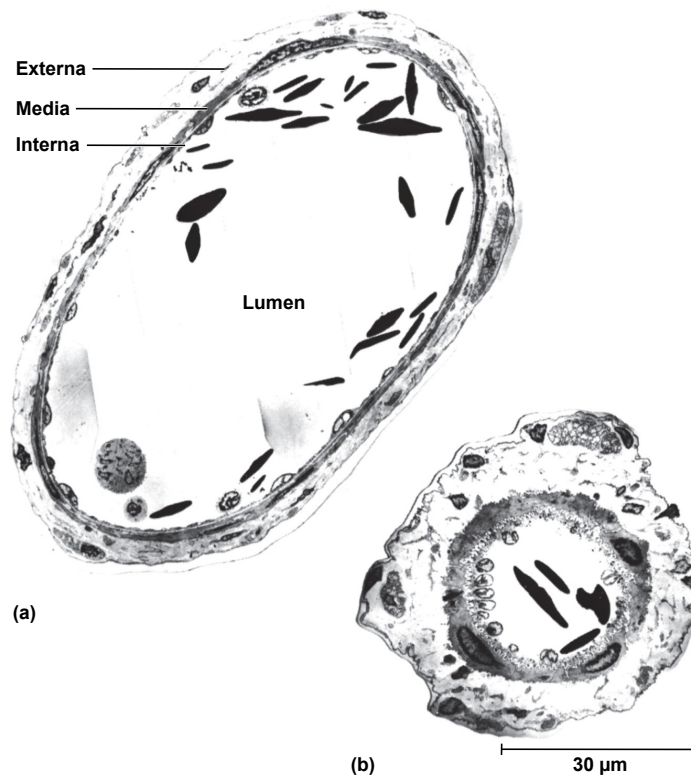


(b)

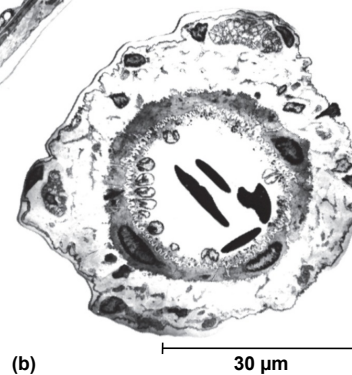
11

Fig. 20.12

Copyright © McGraw-Hill Education. Permission required for reproduction or display.



(a)



(b)

30 μ m

a,b: Phelps, P. C. and Luft, J. H. (1969), "Electron microscopical study of relaxation and constriction in frog arterioles." *Am. J. Anat.*, 1969/125: 399-427.
Reproduced with permission of Wiley Inc.

12

Table 20.1

Copyright © McGraw-Hill Education. Permission required for reproduction or display.

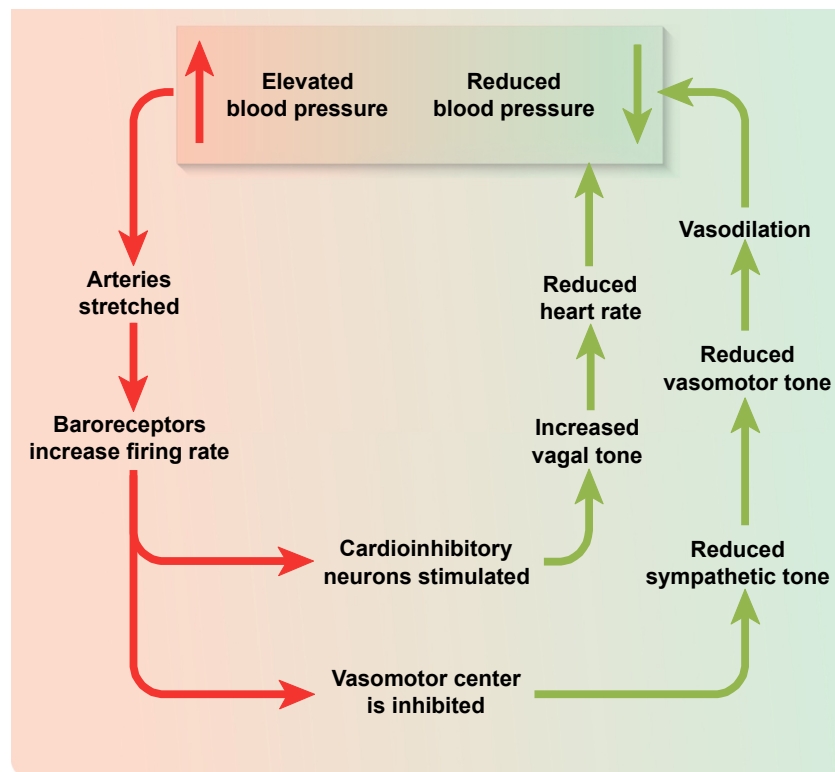
TABLE 20.1		
Blood Velocity in the Systemic Circuit		
Vessel	Typical Lumen Diameter	Velocity*
Aorta	2.5 cm	1,200 mm/s
Arterioles	20–50 μm	15 mm/s
Capillaries	5–9 μm	0.4 mm/s
Venules	20 μm	5 mm/s
Inferior vena cava	3 cm	80 mm/s

*Peak systolic velocity in the aorta; mean or steady velocity in other vessels, assuming no upstream vasoconstriction adding to resistance

13

Fig. 20.13

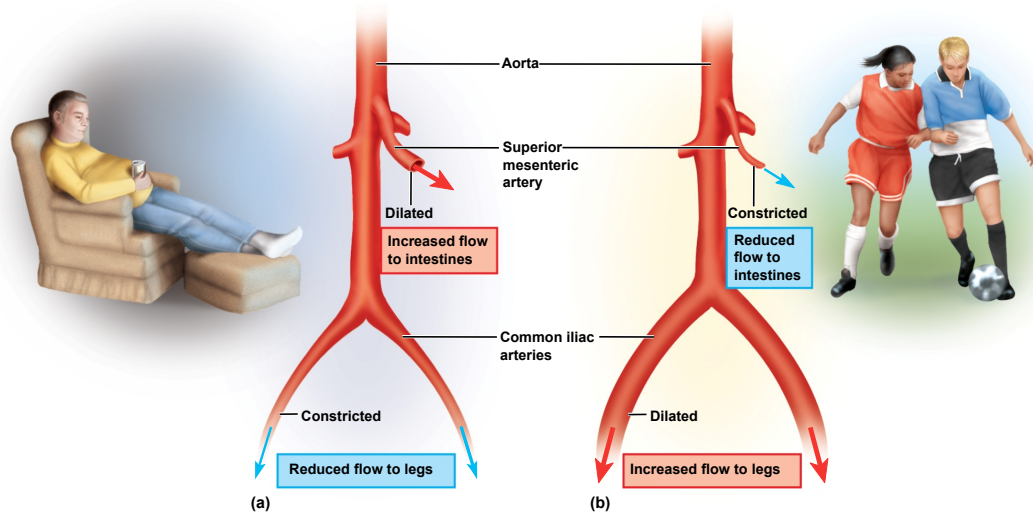
Copyright © McGraw-Hill Education. Permission required for reproduction or display.



14

Fig. 20.14

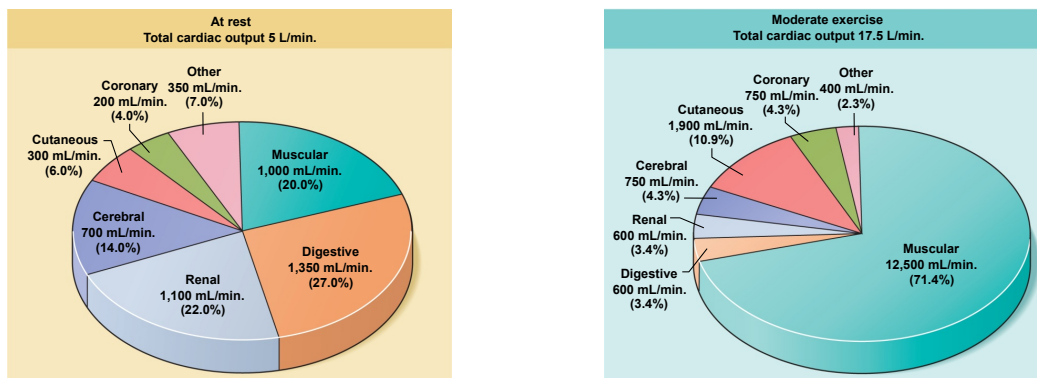
Copyright © McGraw-Hill Education. Permission required for reproduction or display.



15

Fig. 20.15

Copyright © McGraw-Hill Education. Permission required for reproduction or display.



16

Fig. 20.16

Copyright © McGraw-Hill Education. Permission required for reproduction or display.

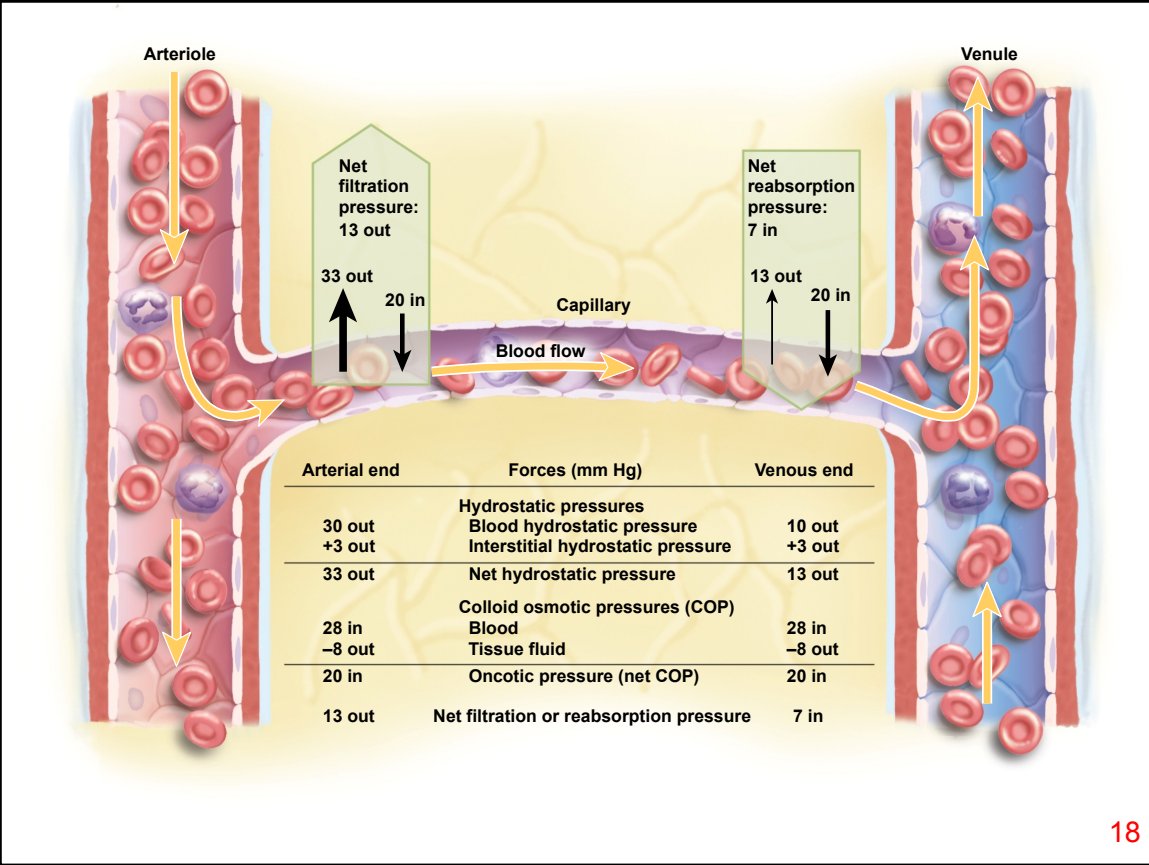
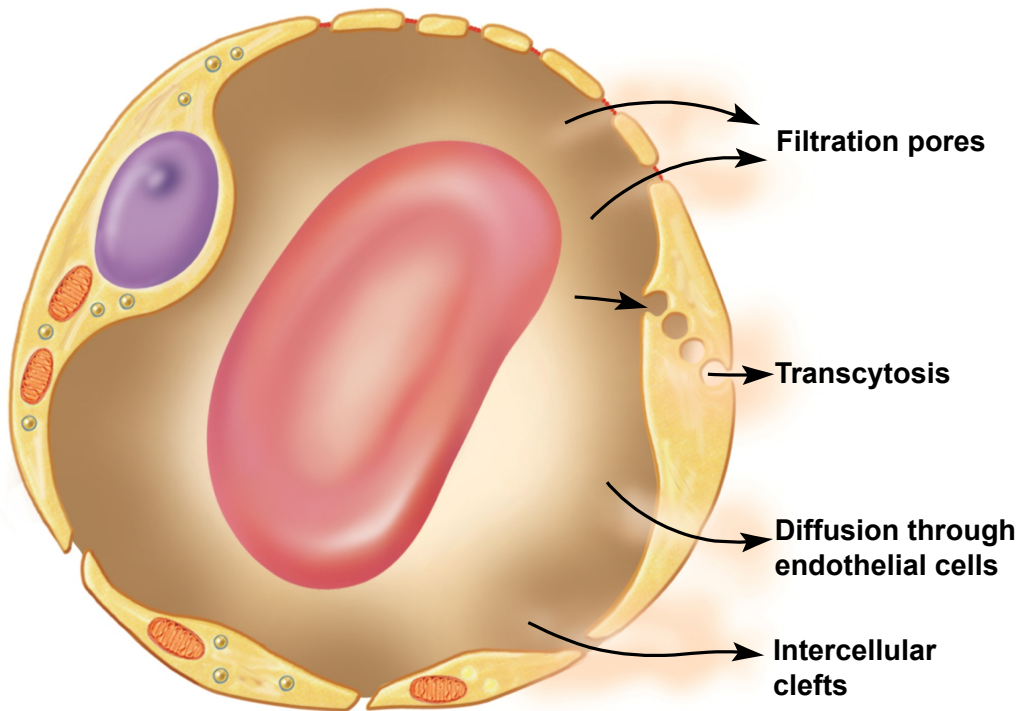


Fig. 20.19

Copyright © McGraw-Hill Education. Permission required for reproduction or display.

