

Fig. 17.1

Copyright © McGraw-Hill Education. Permission required for reproduction or display.

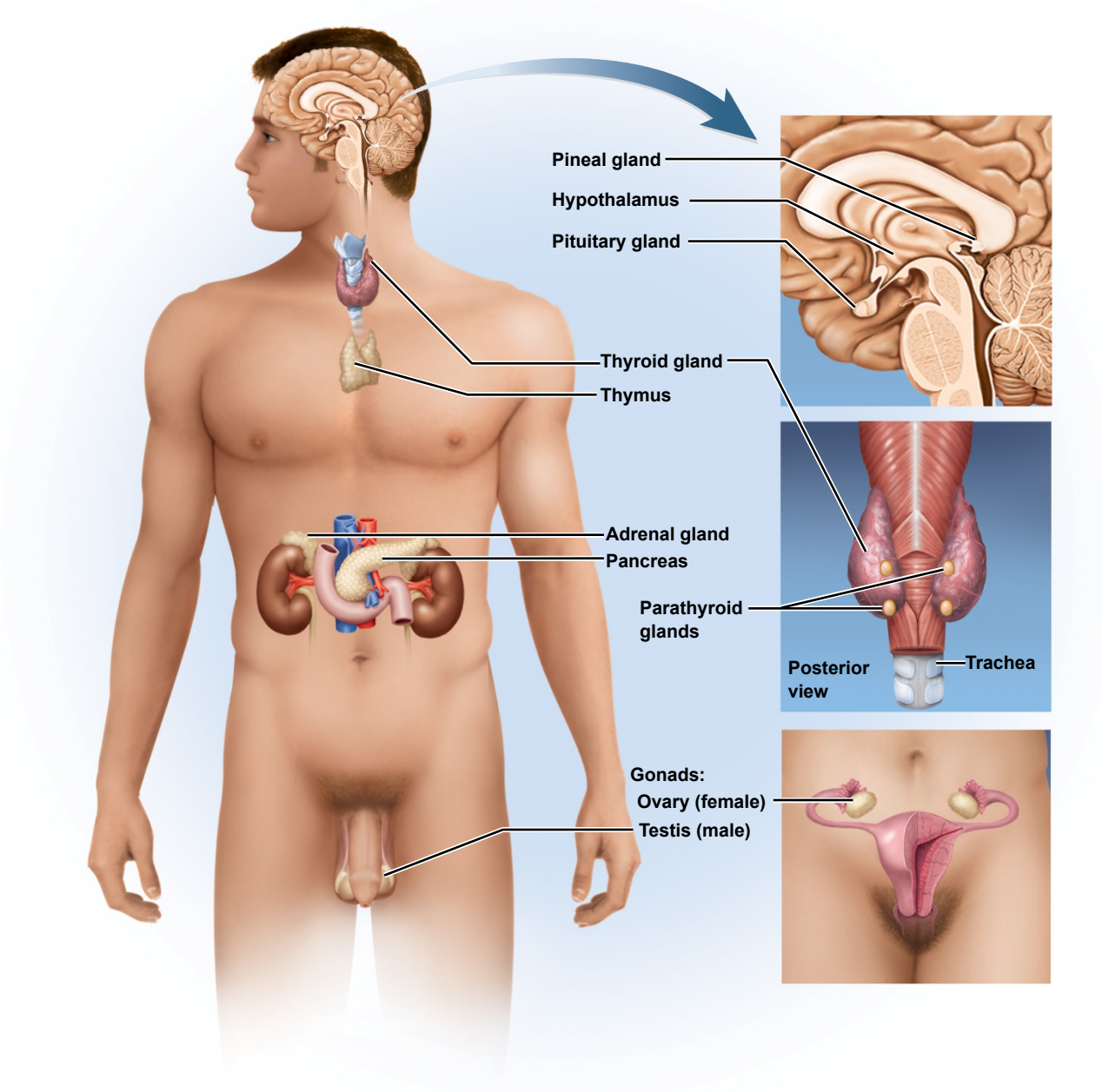


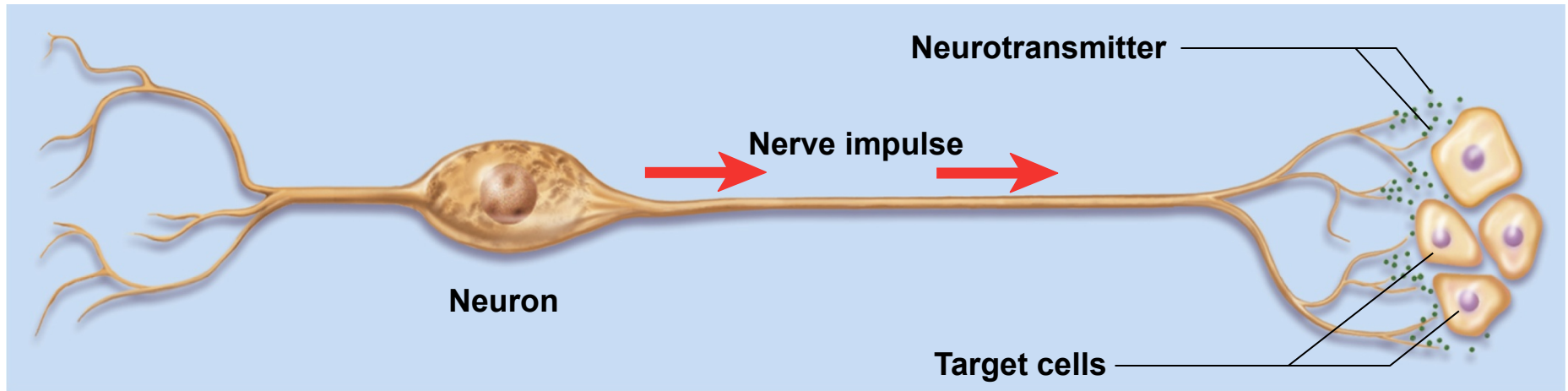
Table 17.1

Copyright © McGraw-Hill Education. Permission required for reproduction or display.

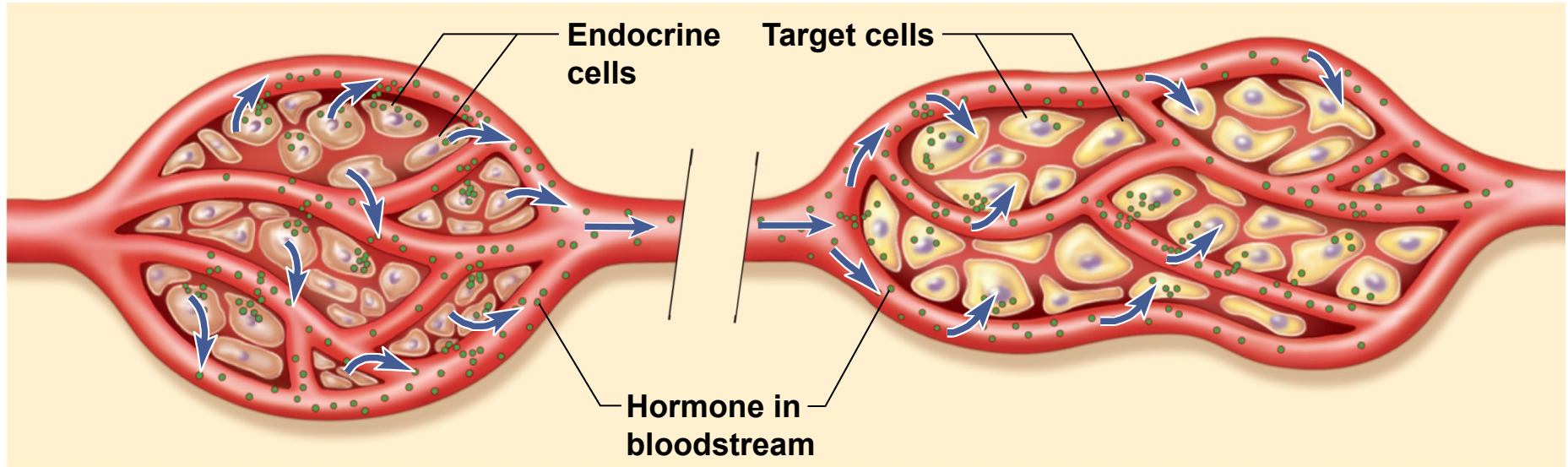
TABLE 17.1		Comparison of the Nervous and Endocrine Systems	
Nervous System		Endocrine System	
Communicates by means of electrical impulses and neurotransmitters		Communicates by means of hormones	
Releases neurotransmitters at synapses at specific target cells		Releases hormones into bloodstream for general distribution throughout body	
Usually has relatively local, specific effects		Sometimes has very general, widespread effects	
Reacts quickly to stimuli, usually within 1–10 ms		Reacts more slowly to stimuli, often taking seconds to days	
Stops quickly when stimulus stops		May continue responding long after stimulus stops	
Adapts relatively quickly to continual stimulation		Adapts relatively slowly; may respond for days to weeks	

Fig. 17.2

Copyright © McGraw-Hill Education. Permission required for reproduction or display.



(a) Nervous system



(b) Endocrine system

Table 17.2

Copyright © McGraw-Hill Education. Permission required for reproduction or display.

TABLE 17.2			Names and Abbreviations for Hormones		
Abbreviation		Name		Source	
ACTH		Adrenocorticotrophic hormone (corticotropin)		Anterior pituitary	
ADH		Antidiuretic hormone (arginine vasopressin)		Posterior pituitary	
ANP		Atrial natriuretic peptide		Heart	
CRH		Corticotropin-releasing hormone		Hypothalamus	
DHEA		Dehydroepiandrosterone		Adrenal cortex	
EPO		Erythropoietin		Kidney, liver	
FSH		Follicle-stimulating hormone		Anterior pituitary	
GH		Growth hormone (somatotropin)		Anterior pituitary	
GHRH		Growth hormone–releasing hormone		Hypothalamus	
GnRH		Gonadotropin-releasing hormone		Hypothalamus	
IGFs		Insulin-like growth factors (somatomedins)		Liver, other tissues	
LH		Luteinizing hormone		Anterior pituitary	
NE		Norepinephrine		Adrenal medulla	
OT		Oxytocin		Posterior pituitary	
PIH		Prolactin-inhibiting hormone (dopamine)		Hypothalamus	
PRL		Prolactin		Anterior pituitary	
PTH		Parathyroid hormone (parathormone)		Parathyroids	
T ₃		Triiodothyronine		Thyroid	
T ₄		Thyroxine (tetraiodothyronine)		Thyroid	
TH		Thyroid hormone (T ₃ and T ₄ collectively)		Thyroid	
TRH		Thyrotropin-releasing hormone		Hypothalamus	
TSH		Thyroid-stimulating hormone (thyrotropin)		Anterior pituitary	

Fig. 17.3

Copyright © McGraw-Hill Education. Permission required for reproduction or display.

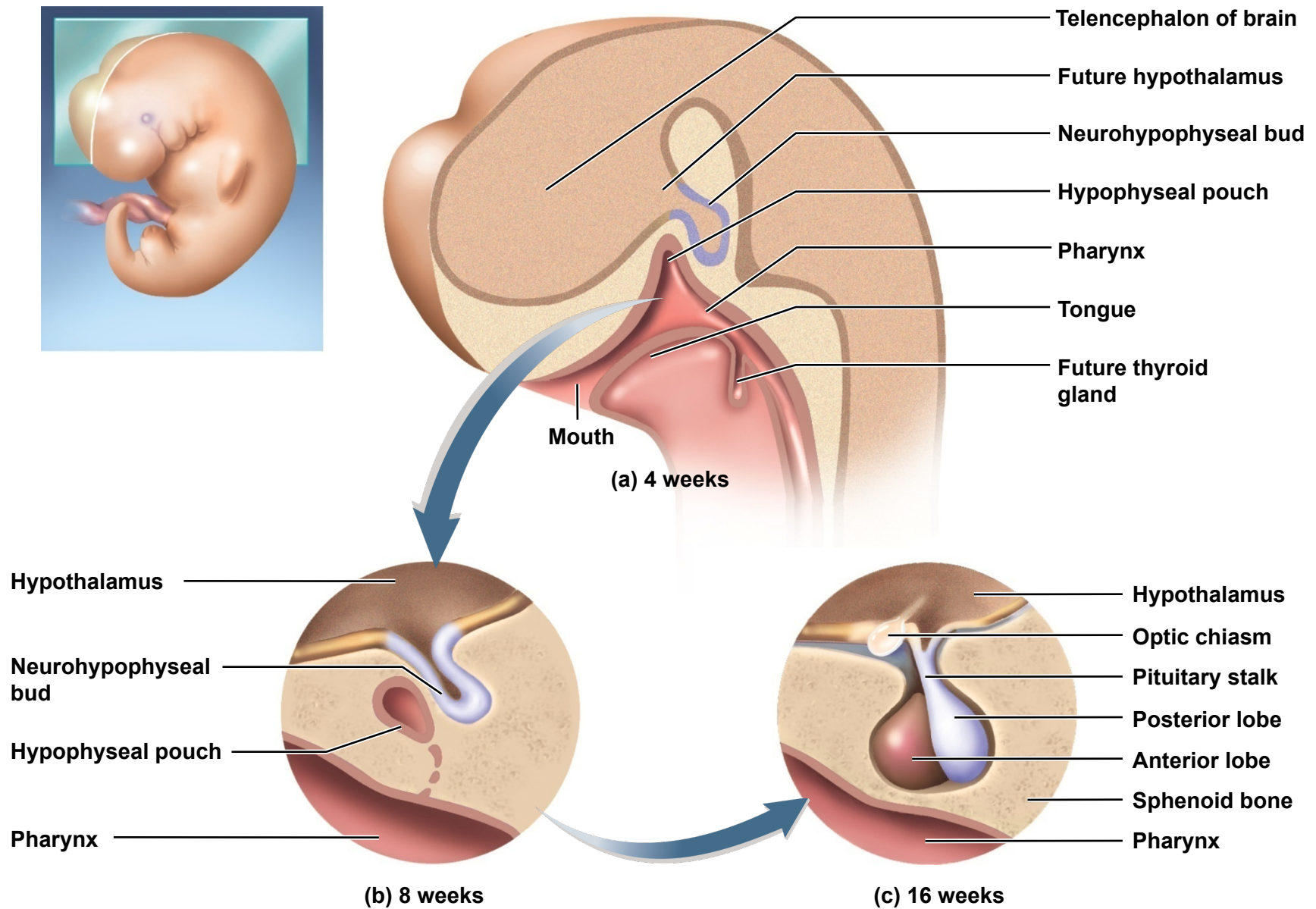


Fig. 17.4

Copyright © McGraw-Hill Education. Permission required for reproduction or display.

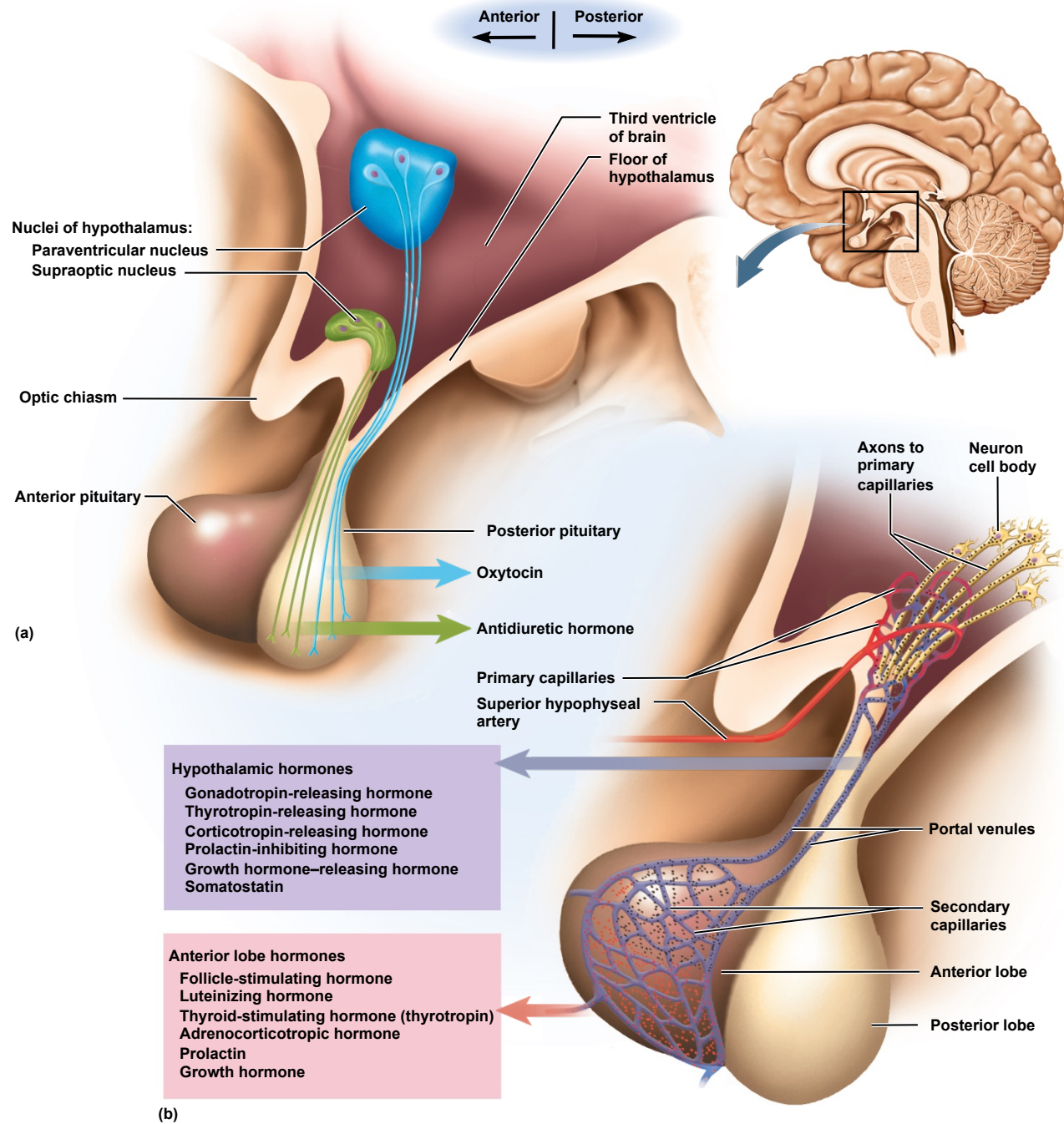
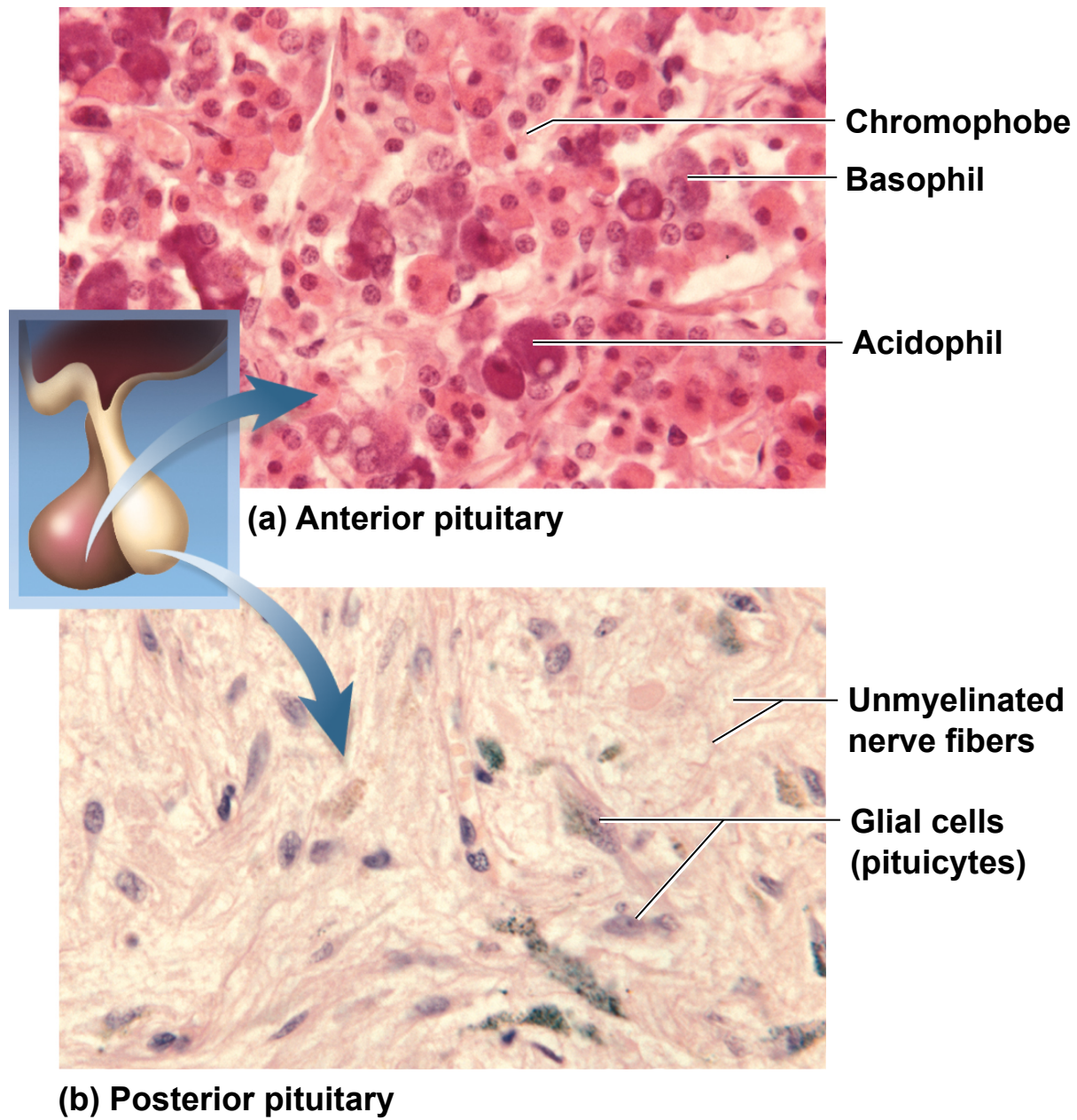


Fig. 17.5

Copyright © McGraw-Hill Education. Permission required for reproduction or display.



a: ©Dr. John D. Cunningham/Visuals Unlimited; b: ©Science VU/Visuals Unlimited

Table 17.3

Copyright © McGraw-Hill Education. Permission required for reproduction or display.

TABLE 17.3		Hypothalamic Releasing and Inhibiting Hormones That Regulate the Anterior Pituitary
Hormone	Principal Effects	
Thyrotropin-releasing hormone (TRH)	Promotes secretion of thyroid-stimulating hormone (TSH) and prolactin (PRL)	
Corticotropin-releasing hormone (CRH)	Promotes secretion of adrenocorticotrophic hormone (ACTH)	
Gonadotropin-releasing hormone (GnRH)	Promotes secretion of follicle-stimulating hormone (FSH) and luteinizing hormone (LH)	
Growth hormone–releasing hormone (GHRH)	Promotes secretion of growth hormone (GH)	
Prolactin-inhibiting hormone (PIH)	Inhibits secretion of prolactin (PRL)	
Somatostatin	Inhibits secretion of growth hormone (GH) and thyroid-stimulating hormone (TSH)	

Table 17.4

Copyright © McGraw-Hill Education. Permission required for reproduction or display.

TABLE 17.4		
Pituitary Hormones		
Hormone	Target Organ or Tissue	Principal Effects
Anterior Pituitary		
Follicle-stimulating hormone (FSH)	Ovaries, testes	<i>Female:</i> Growth of ovarian follicles and secretion of estrogen <i>Male:</i> Sperm production
Luteinizing hormone (LH)	Ovaries, testes	<i>Female:</i> Ovulation, maintenance of corpus luteum <i>Male:</i> Testosterone secretion
Thyroid-stimulating hormone (TSH)	Thyroid gland	Growth of thyroid, secretion of thyroid hormone
Adrenocorticotrophic hormone (ACTH)	Adrenal cortex	Growth of adrenal cortex, secretion of glucocorticoids
Prolactin (PRL)	Mammary glands, testes	<i>Female:</i> Milk synthesis <i>Male:</i> Increased LH sensitivity
Growth hormone (GH)	Liver, bone, cartilage, muscle, fat	Widespread tissue growth, especially in the stated tissues
Posterior Pituitary		
Antidiuretic hormone (ADH)	Kidneys	Water retention
Oxytocin (OT)	Uterus, mammary glands	Labor contractions, milk release; possibly involved in ejaculation, sperm transport, sexual affection, and mother–infant bonding

Fig. 17.6

Copyright © McGraw-Hill Education. Permission required for reproduction or display.

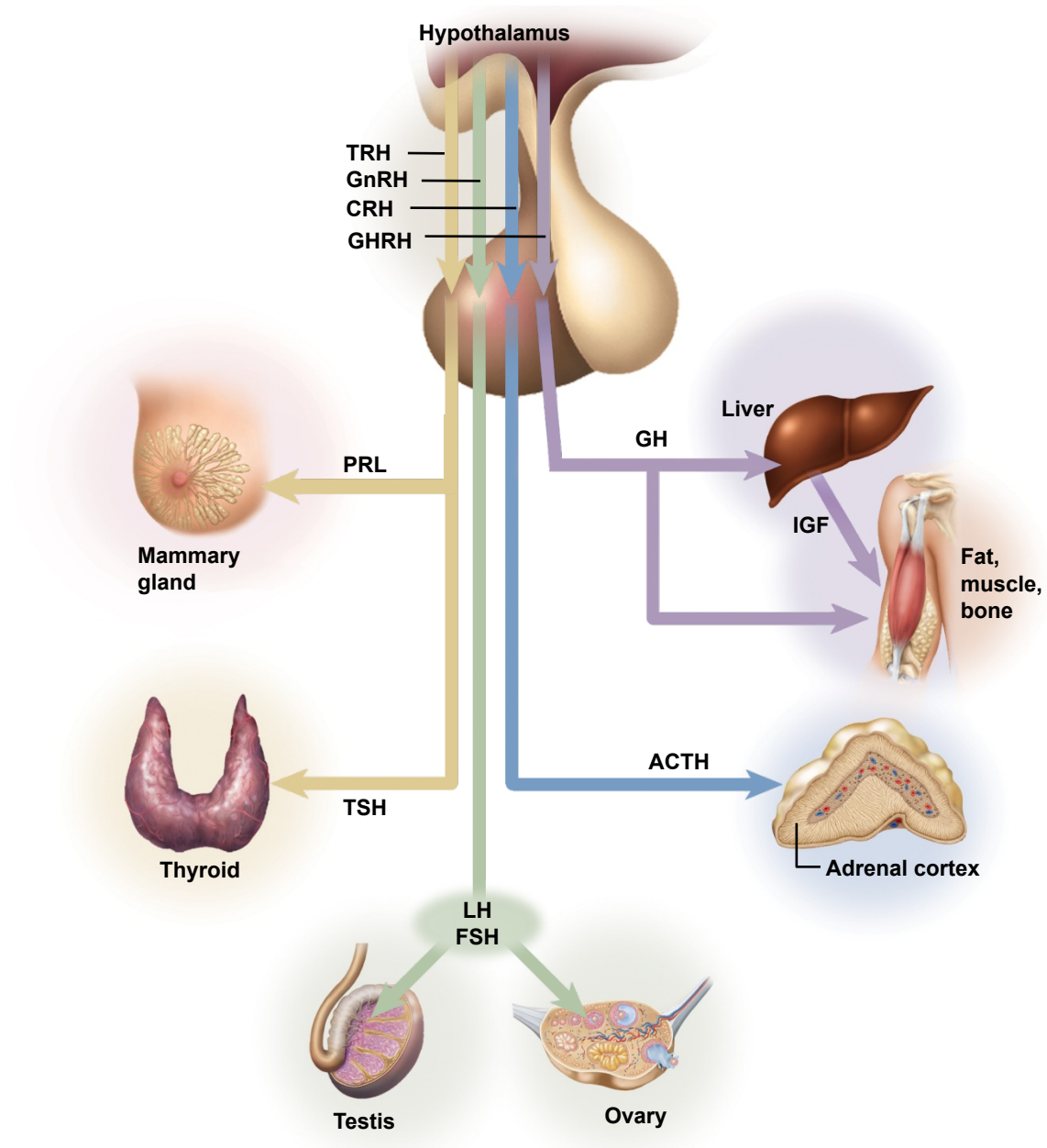


Fig. 17.7

Copyright © McGraw-Hill Education. Permission required for reproduction or display.

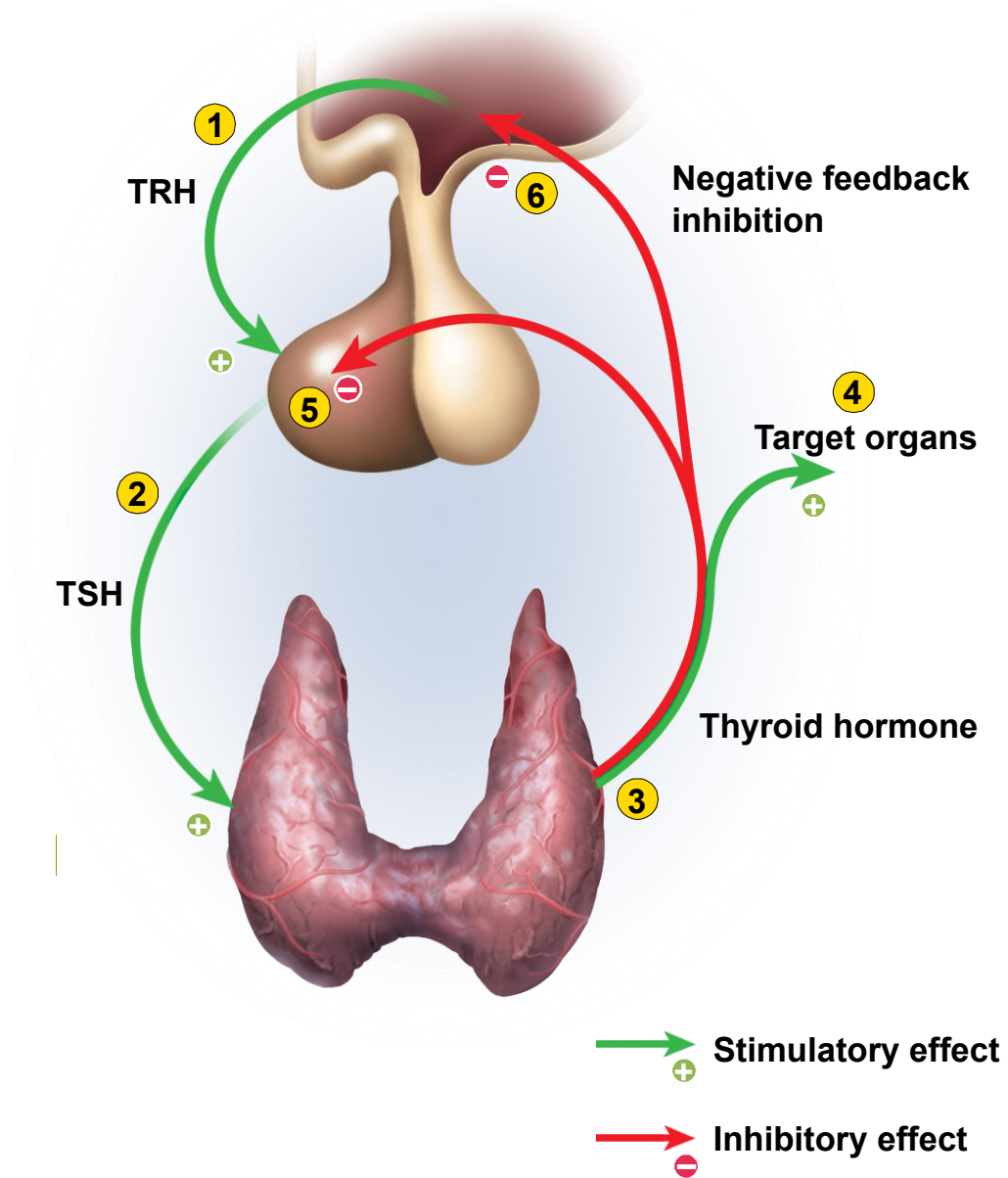


Fig. 17.8

Copyright © McGraw-Hill Education. Permission required for reproduction or display.

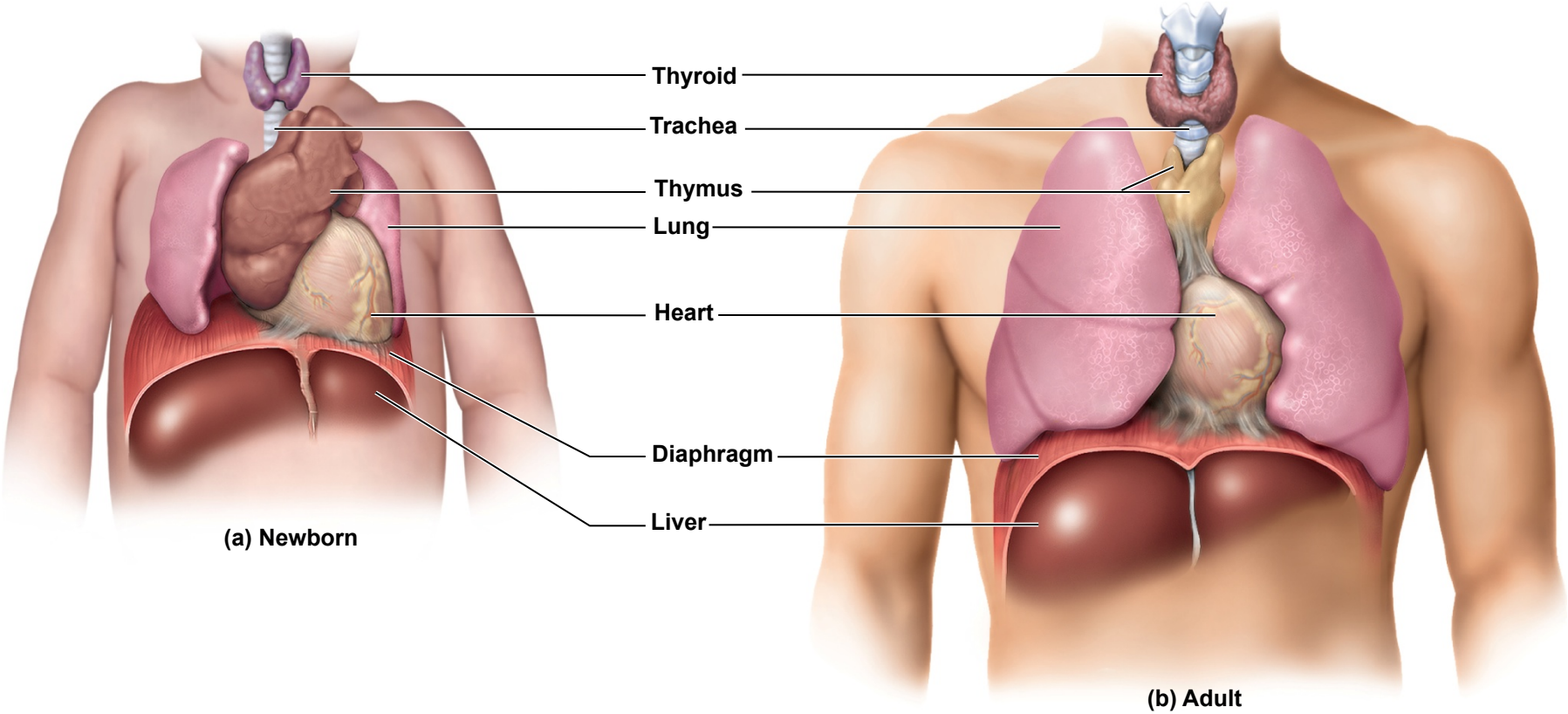
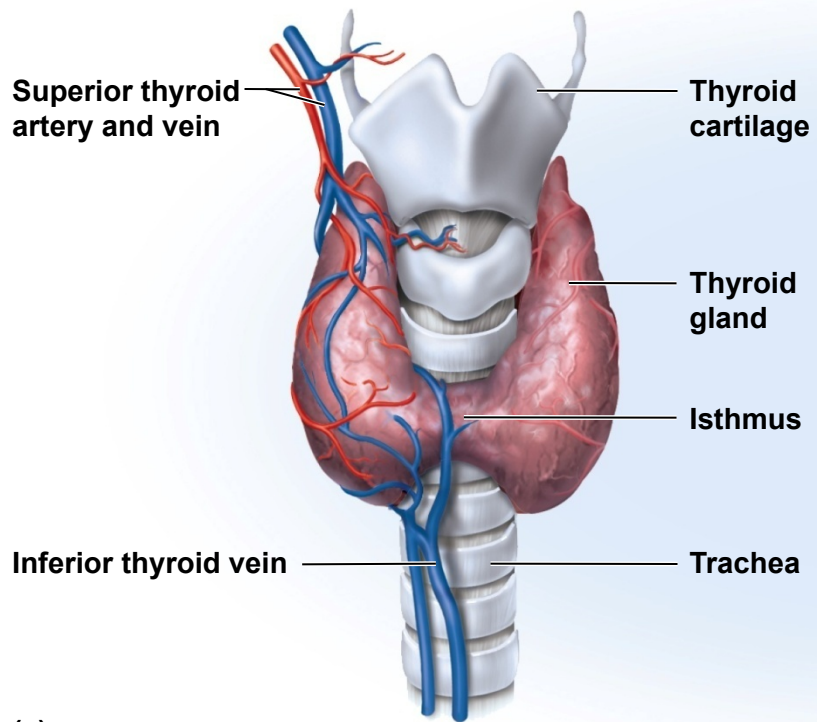
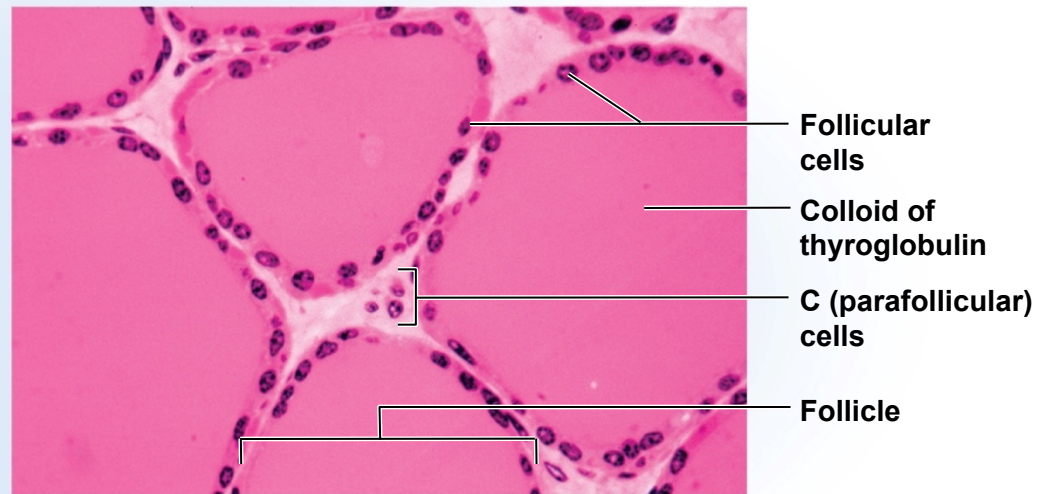


Fig. 17.9

Copyright © McGraw-Hill Education. Permission required for reproduction or display.



(a)

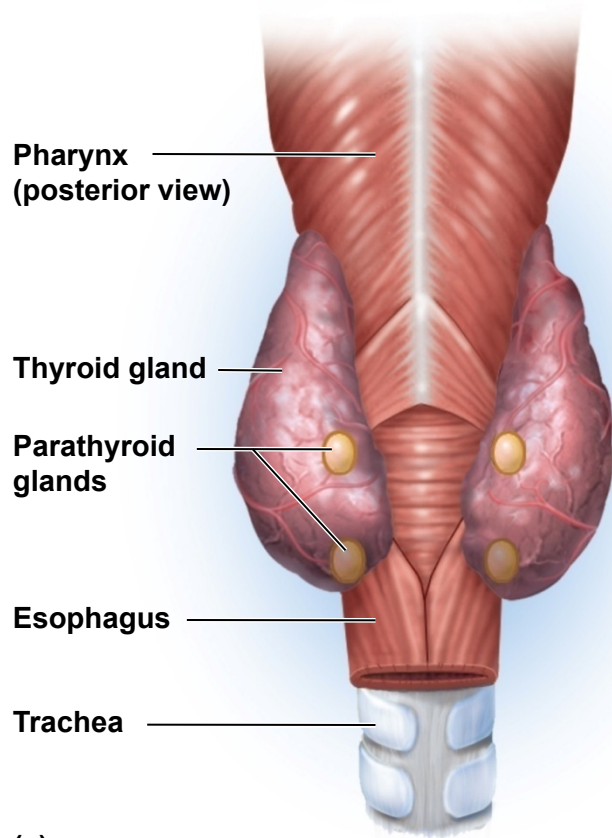


(b)

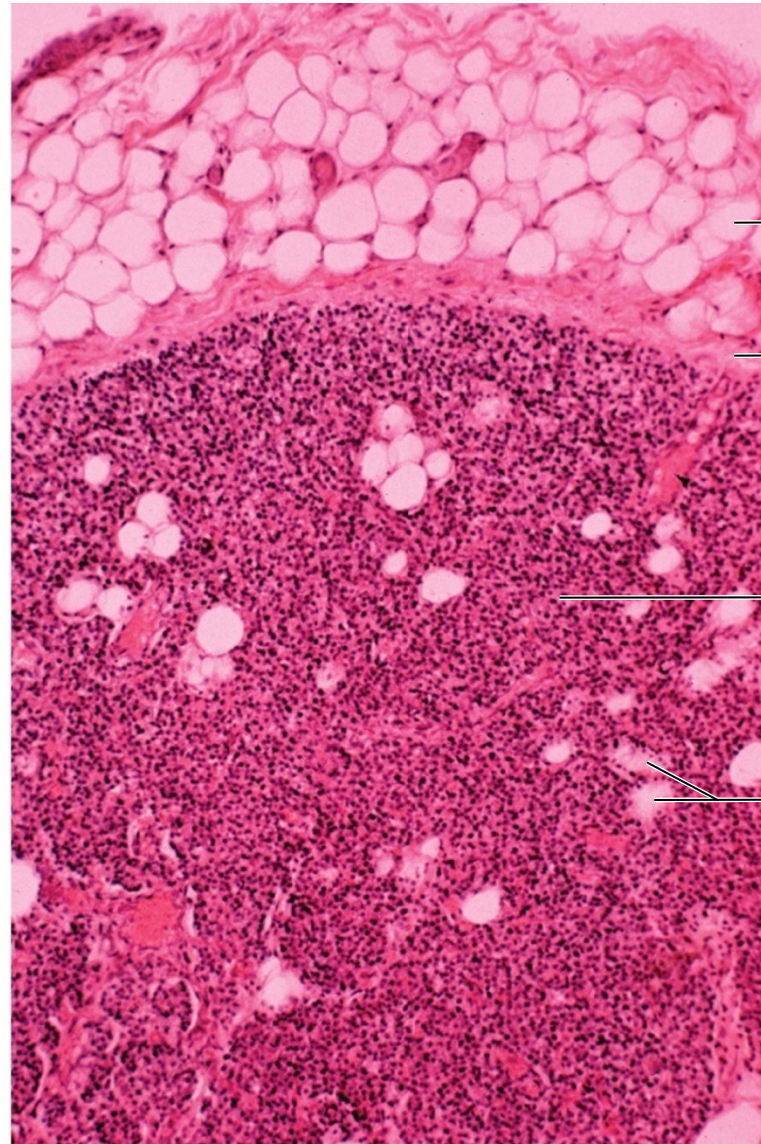
b: ©Robert Calentine/Visuals Unlimited

Fig. 17.10

Copyright © McGraw-Hill Education. Permission required for reproduction or display.



(a)

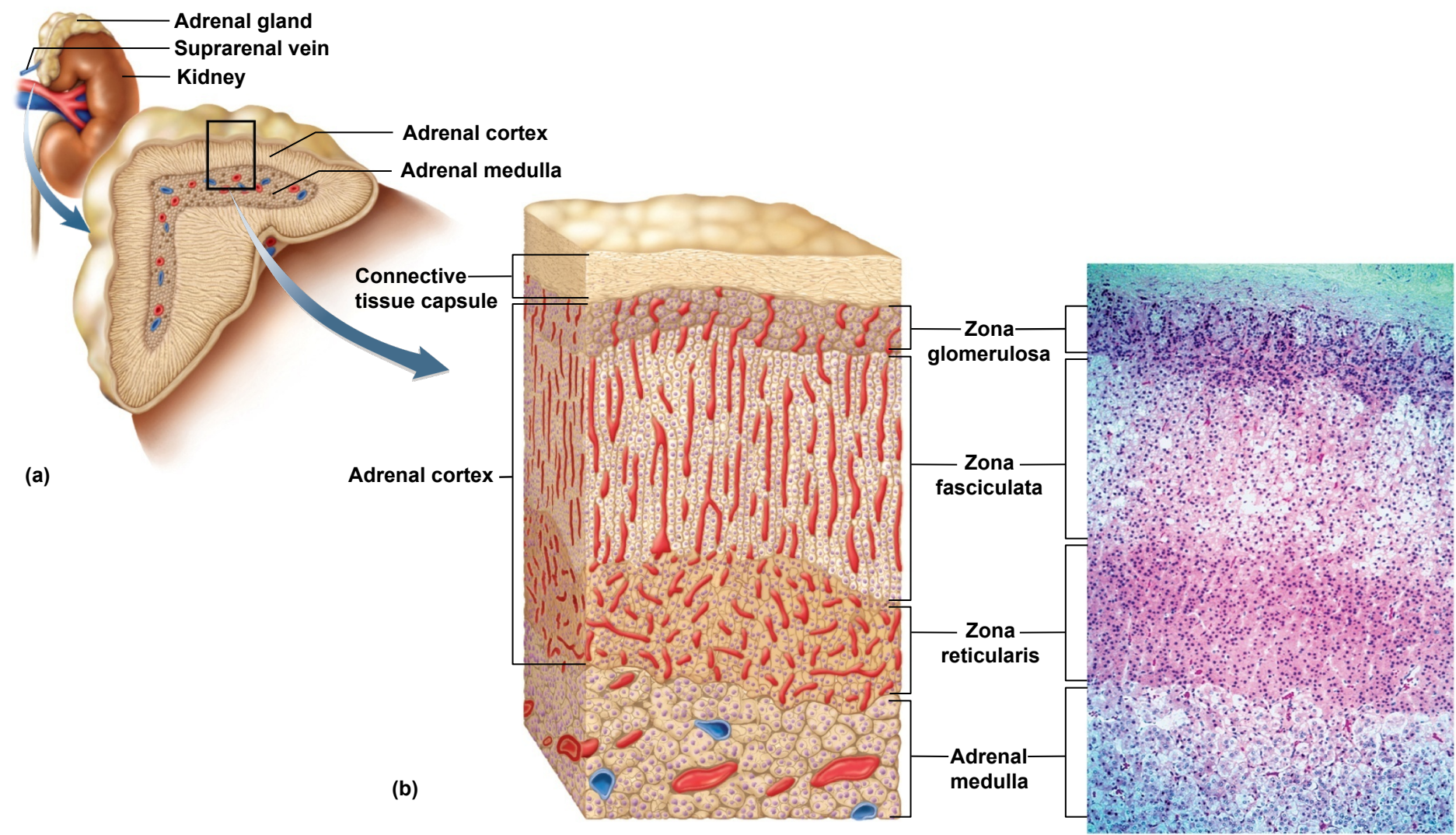


(b)

b: ©John Cunningham/Visuals Unlimited

Fig. 17.11

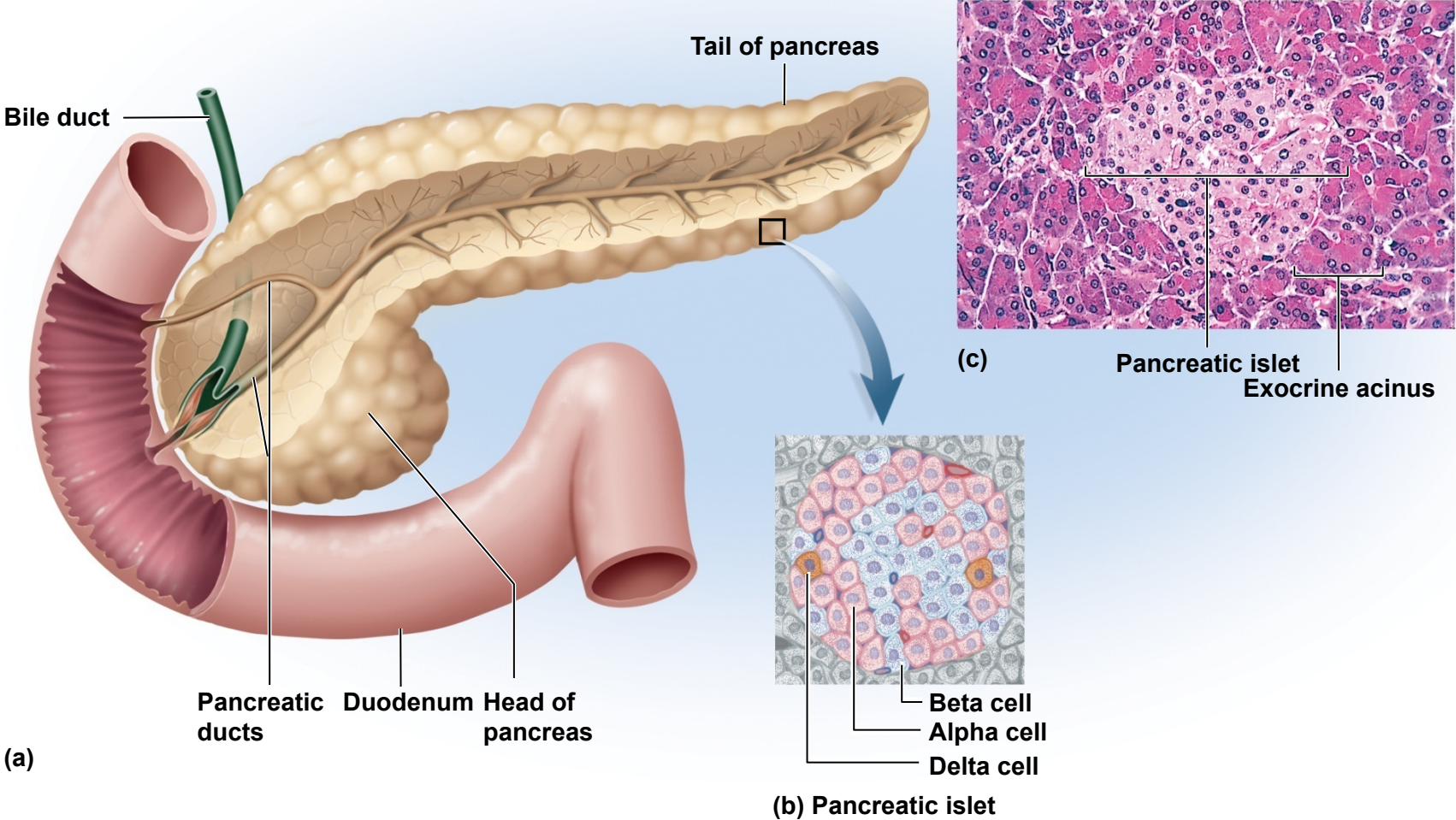
Copyright © McGraw-Hill Education. Permission required for reproduction or display.



b: ©Victor Eroschenko

Fig. 17.12

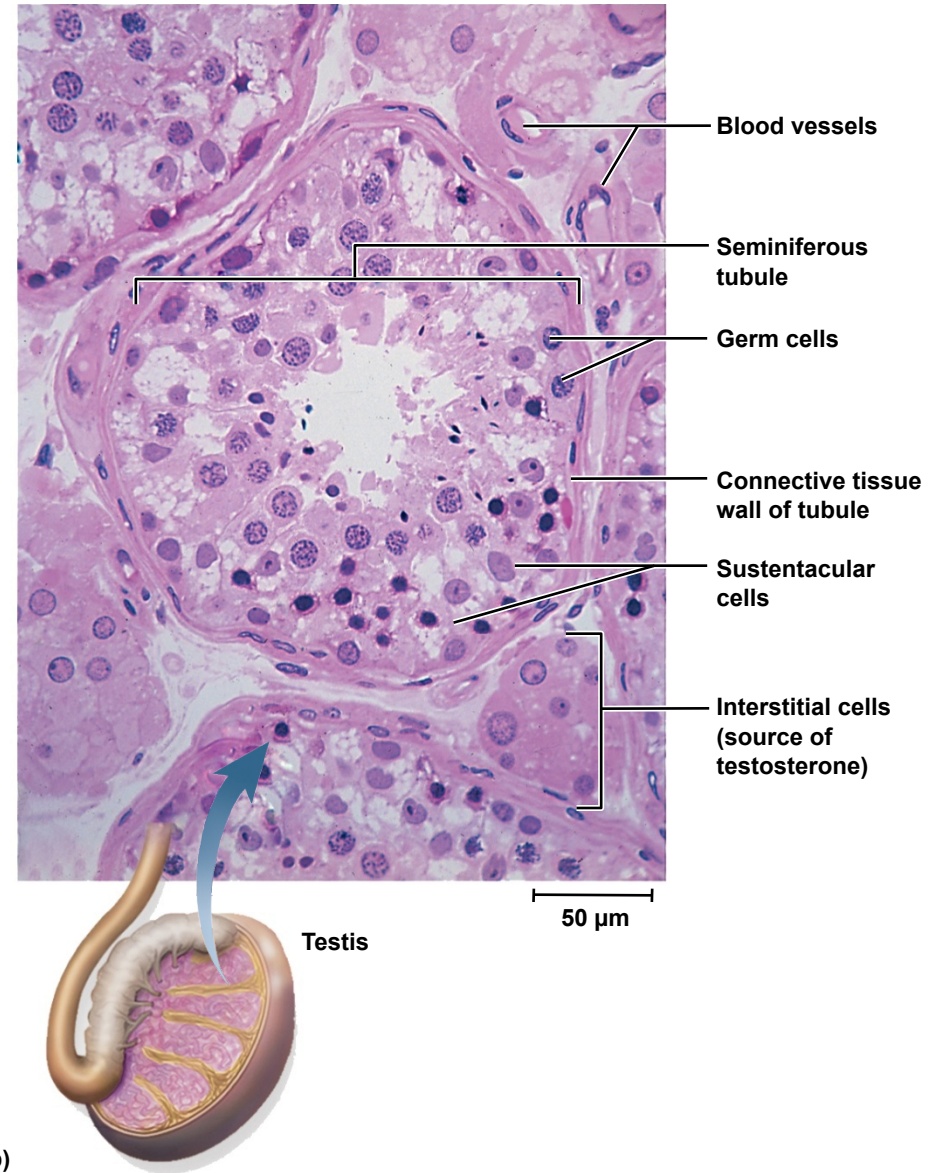
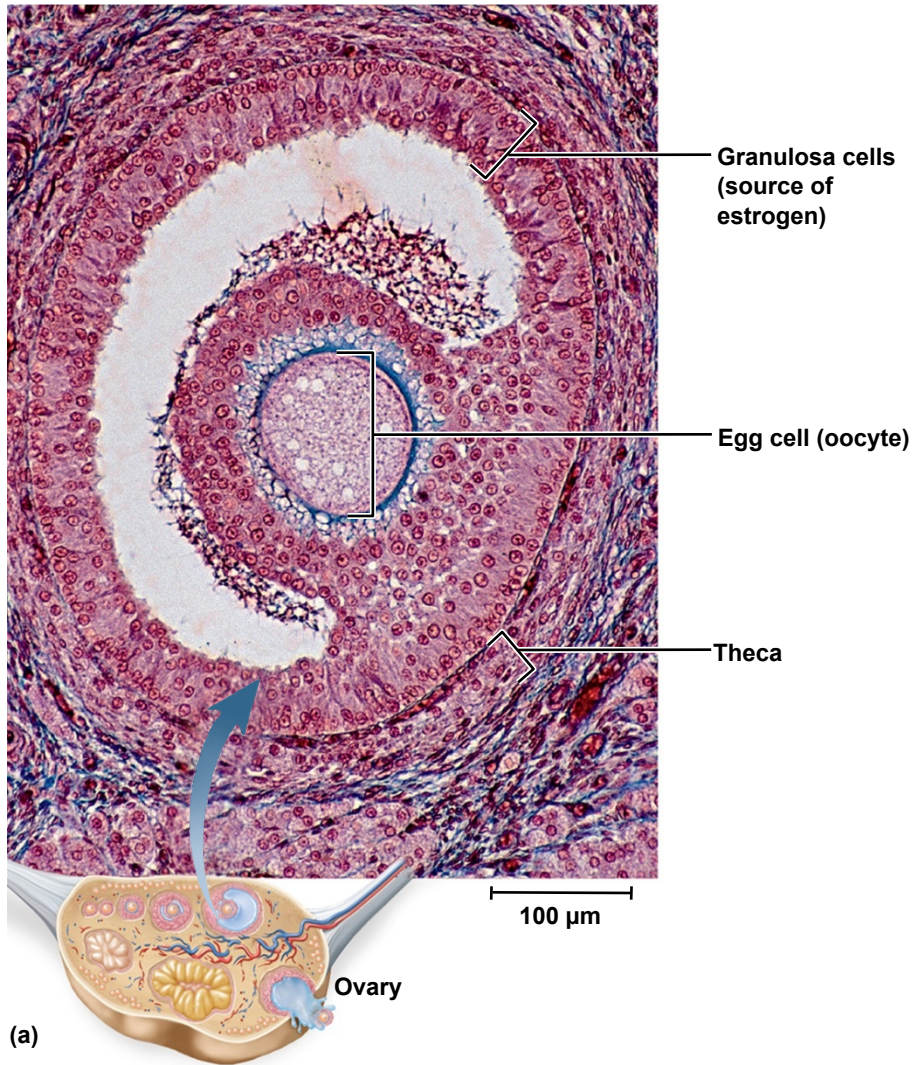
Copyright © McGraw-Hill Education. Permission required for reproduction or display.



c: ©Ed Reschke

Fig. 17.13

Copyright © McGraw-Hill Education. Permission required for reproduction or display.



a: ©Ed Reschke/Getty Images; b: © Ed Reschke

Table 17.5a

Copyright © McGraw-Hill Education. Permission required for reproduction or display.

TABLE 17.5			
Hormones from Sources Other than the Hypothalamus and Pituitary			
Source	Hormone	Target Organs and Tissues	Principal Effects
Pineal gland	Melatonin	Brain	Uncertain; may influence mood and sexual maturation
Thymus	Thymopoietin, thymosin, thymulin	Immune cells (T lymphocytes)	Stimulate T lymphocyte development and activity
Thyroid gland	Thyroxine (T ₄) and triiodothyronine (T ₃)	Most tissues	Elevate metabolic rate and heat production; increase respiratory rate, heart rate, and strength of heartbeat; stimulate appetite and accelerate breakdown of nutrients; promote alertness and quicken reflexes; stimulate growth hormone secretion and growth of skin, hair, nails, teeth, and fetal nervous system
	Calcitonin	Bone	Stimulates bone deposition, mainly in children
Parathyroid glands	Parathyroid hormone (PTH)	Bone, kidneys, small intestine	Raises blood Ca ²⁺ level by stimulating bone resorption and inhibiting deposition, reducing urinary Ca ²⁺ excretion, and enhancing calcitriol synthesis
Adrenal medulla	Epinephrine, norepinephrine, dopamine	Most tissues	Promote alertness; mobilize organic fuels; raise metabolic rate; stimulate circulation and respiration; increase blood glucose level; inhibit insulin secretion and glucose uptake by insulin-dependent organs (sparing glucose for brain)
Adrenal cortex	Aldosterone	Kidney	Promotes Na ⁺ and water retention and K ⁺ excretion; maintains blood pressure and volume
	Cortisol and corticosterone	Most tissues	Stimulate fat and protein catabolism, gluconeogenesis, stress resistance, and tissue repair
	Dehydroepiandrosterone	Bone, muscle, integument, brain, many other tissues	Precursor of testosterone; indirectly promotes growth of bones, pubic and axillary hair, apocrine glands, and fetal male reproductive tract; stimulates libido

Table 17.5b

Copyright © McGraw-Hill Education. Permission required for reproduction or display.

TABLE 17.5 Hormones from Sources Other than the Hypothalamus and Pituitary (continued)			
Source	Hormone	Target Organs and Tissues	Principal Effects
Pancreatic islets	Glucagon	Primarily liver	Stimulates amino acid absorption, gluconeogenesis, glycogen and fat breakdown; raises blood glucose and fatty acid levels
	Insulin	Most tissues	Stimulates glucose and amino acid uptake; lowers blood glucose level; promotes glycogen, fat, and protein synthesis
	Somatostatin	Stomach, intestines, pancreatic islet cells	Modulates digestion, nutrient absorption, and glucagon and insulin secretion
	Pancreatic polypeptide	Pancreas, gallbladder	Inhibits release of bile and digestive enzymes
	Gastrin	Stomach	Stimulates acid secretion and gastric motility
Ovaries	Estradiol	Many tissues	Stimulates female reproductive development and adolescent growth; regulates menstrual cycle and pregnancy; prepares mammary glands for lactation
	Progesterone	Uterus, mammary glands	Regulates menstrual cycle and pregnancy; prepares mammary glands for lactation
	Inhibin	Anterior pituitary	Inhibits FSH secretion
Testes	Testosterone	Many tissues	Stimulates fetal and adolescent reproductive development, musculoskeletal growth, sperm production, and libido
	Inhibin	Anterior pituitary	Inhibits FSH secretion
Skin	Cholecalciferol	—	Precursor of calcitriol (see kidneys)
Liver	Calcidiol	—	Precursor of calcitriol (see kidneys)
	Angiotensinogen	—	Precursor of angiotensin II (see kidneys)
	Erythropoietin	Red bone marrow	Promotes red blood cell production, increases oxygen-carrying capacity of blood
	Hepcidin	Small intestine, liver	Promotes iron absorption and mobilization
	Insulin-like growth factor I	Many tissues	Prolongs and mediates action of growth hormone
Kidneys	Angiotensin I	—	Precursor of angiotensin II, a vasoconstrictor
	Calcitriol	Small intestine	Increases blood calcium level mainly by promoting intestinal absorption of Ca^{2+}
	Erythropoietin	Red bone marrow	Promotes red blood cell production, increases oxygen-carrying capacity of blood
Heart	Natriuretic peptides	Kidney	Lower blood volume and pressure by promoting Na^+ and water loss
Stomach and small intestine	Cholecystokinin	Gallbladder, brain	Bile release; appetite suppression
	Gastrin	Stomach	Stimulates acid secretion
	Ghrelin	Brain	Stimulates hunger, initiates feeding
	Peptide YY	Brain	Produces sense of satiety, terminates feeding
	Other enteric hormones	Stomach, intestines	Coordinate secretion and motility in different regions of digestive tract
Adipose tissue	Leptin	Brain	Limits appetite over long term
Osseous tissue	Osteocalcin	Pancreas, adipose tissue	Stimulates pancreatic beta cells to multiply, increases insulin secretion, enhances insulin sensitivity of various tissues, and reduces fat deposition
Placenta	Estrogen, progesterone	Many tissues of mother and fetus	Stimulate fetal development and maternal bodily adaptations to pregnancy; prepare mammary glands for lactation

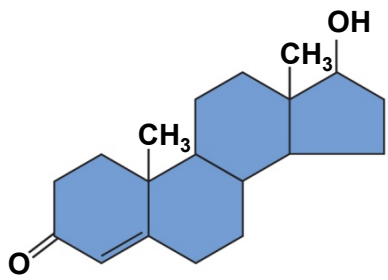
Table 17.6

Copyright © McGraw-Hill Education. Permission required for reproduction or display.

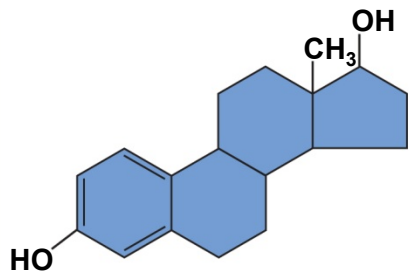
TABLE 17.6		Chemical Classification of Hormones
Steroids and Steroid Derivatives		
Aldosterone		
Androgens		
Calcitriol		
Corticosterone		
Cortisol		
Estrogens		
Progesterone		
Monoamines		
Dopamine		Norepinephrine
Epinephrine		Thyroid hormone
Melatonin		
Peptides		
Oligopeptides (3–10 amino acids)		
Angiotensin II		
Antidiuretic hormone		
Cholecystokinin		
Gonadotropin-releasing hormone		
Oxytocin		
Thyrotropin-releasing hormone		
Polypeptides (more than 10 amino acids)		
Adrenocorticotrophic hormone		Hepcidin
Natriuretic peptides		Insulin
Calcitonin		Leptin
Corticotropin-releasing hormone		Pancreatic polypeptide
Gastrin		Parathyroid hormone
Ghrelin		Prolactin
Glucagon		Somatostatin
Growth hormone		Thymic hormones
Growth hormone–releasing hormone		
Glycoproteins (protein–carbohydrate complexes)		
Erythropoietin		Luteinizing hormone
Follicle-stimulating hormone		Thyroid-stimulating hormone
Inhibin		

Fig. 17.14

Copyright © McGraw-Hill Education. Permission required for reproduction or display.

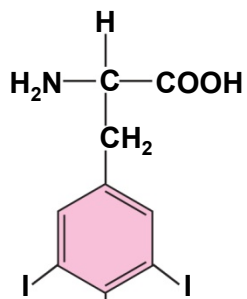


Testosterone

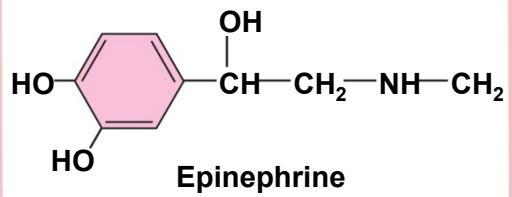


Estradiol

(a) Steroids

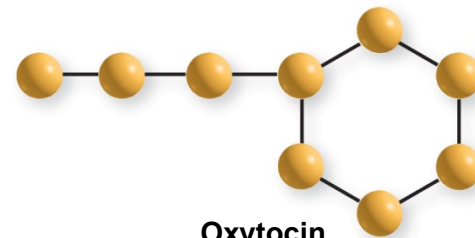


Thyroxine

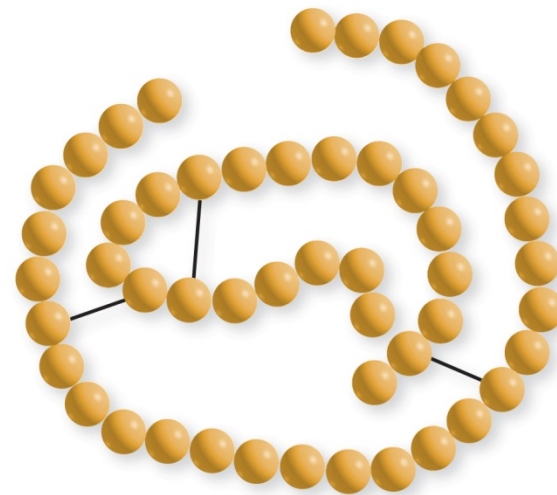


Epinephrine

(b) Monoamines



Oxytocin



Insulin

(c) Peptides

Fig. 17.15

Copyright © McGraw-Hill Education. Permission required for reproduction or display.

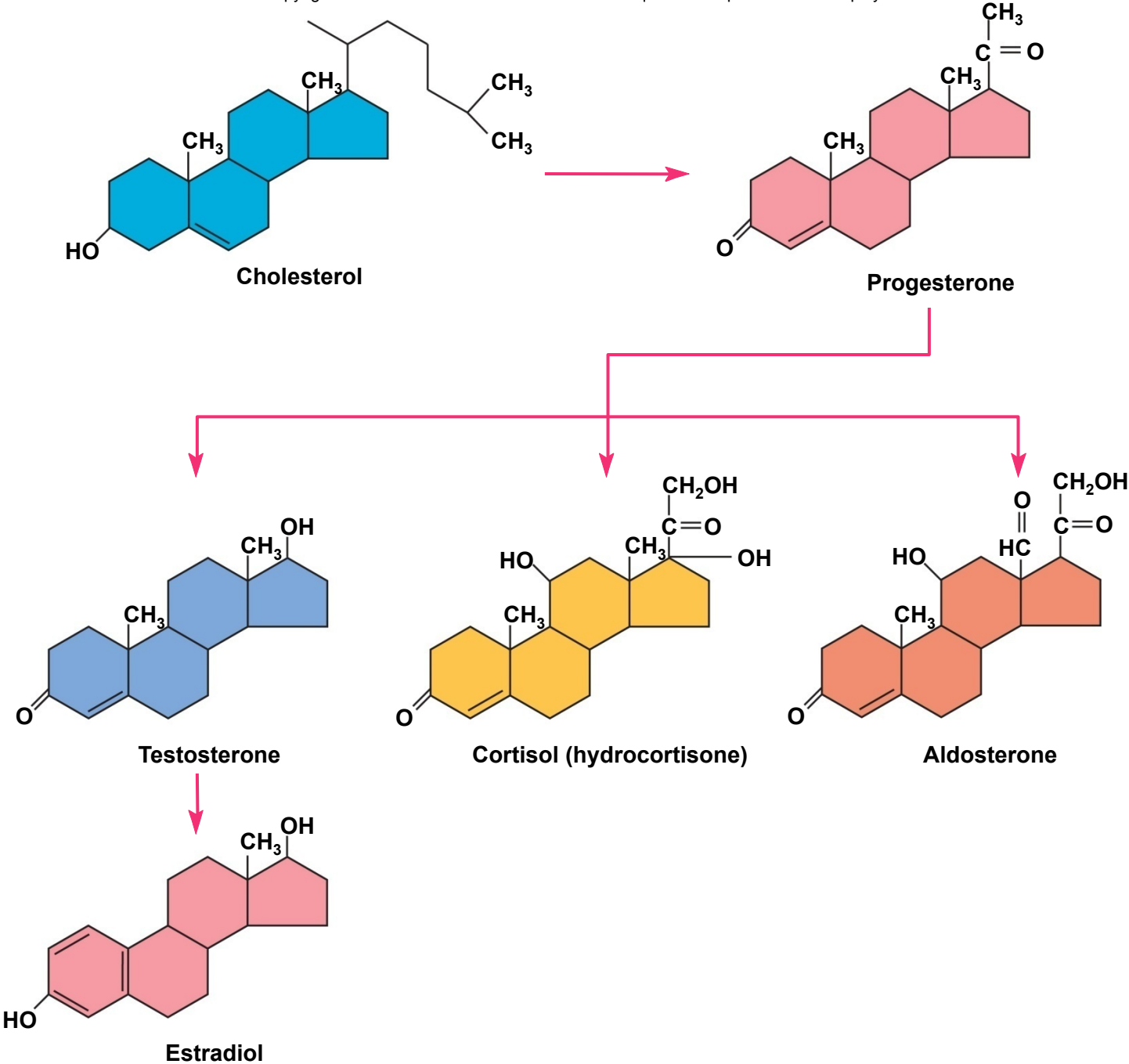


Fig. 17.16

Copyright © McGraw-Hill Education. Permission required for reproduction or display.

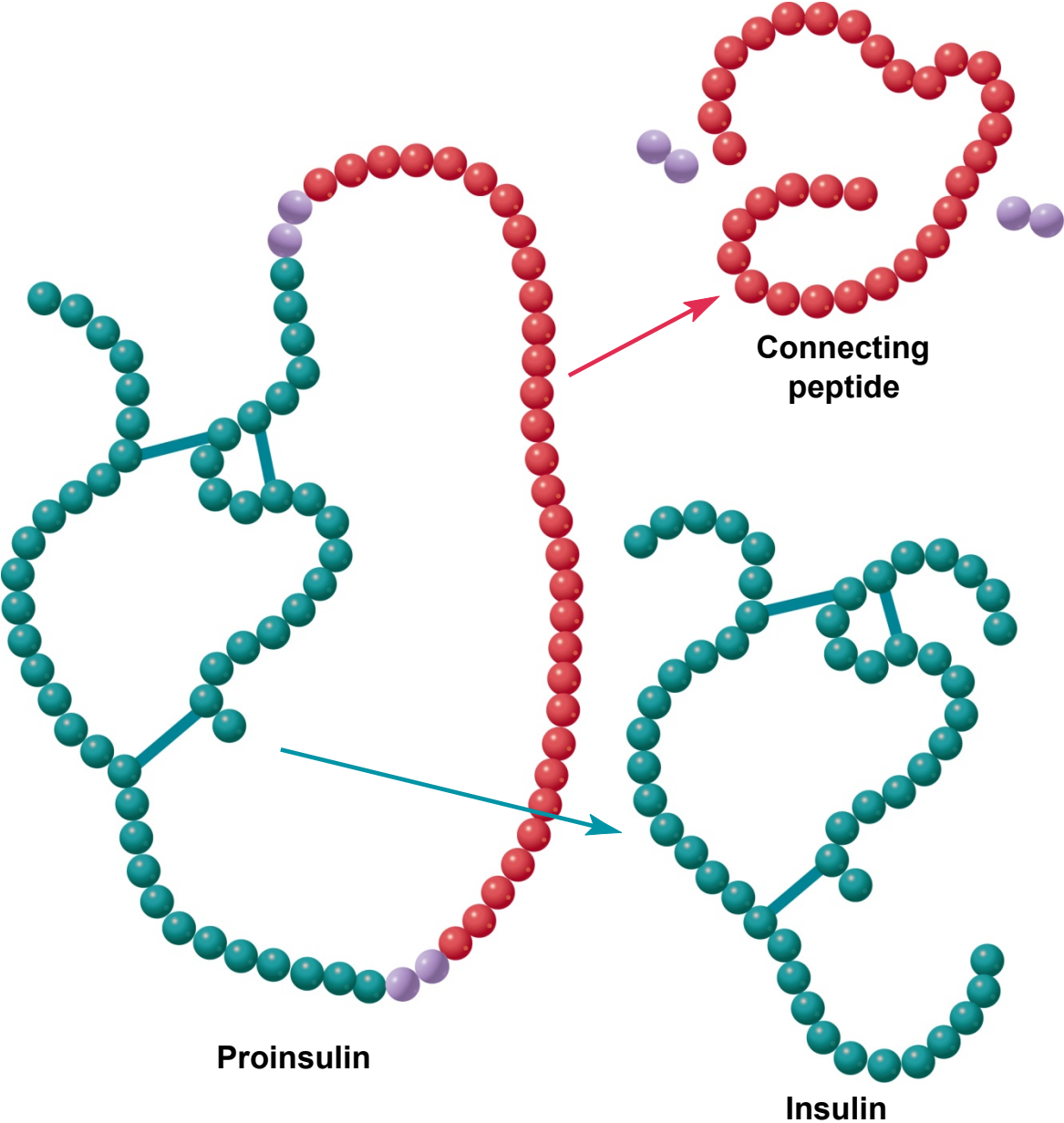


Fig. 17.17

Copyright © McGraw-Hill Education. Permission required for reproduction or display.

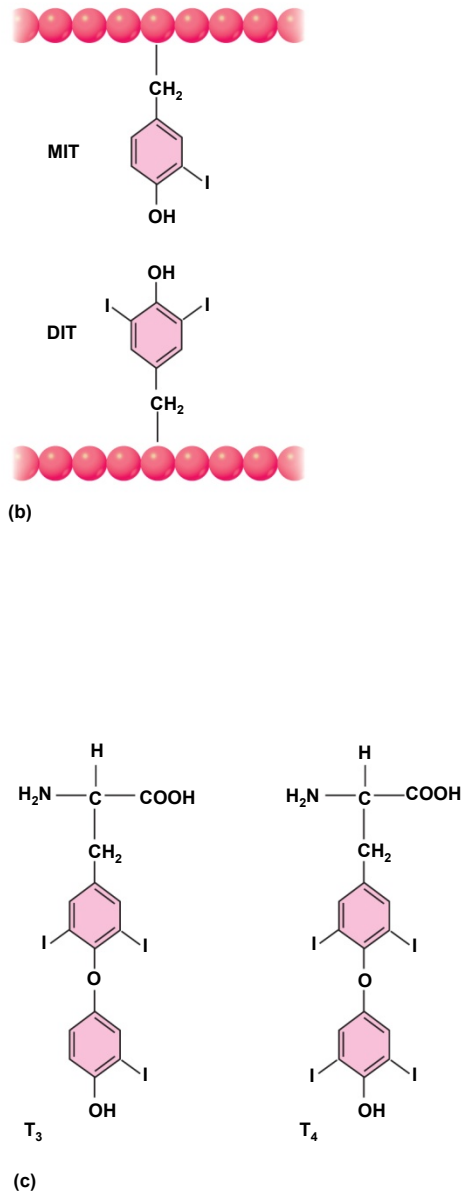
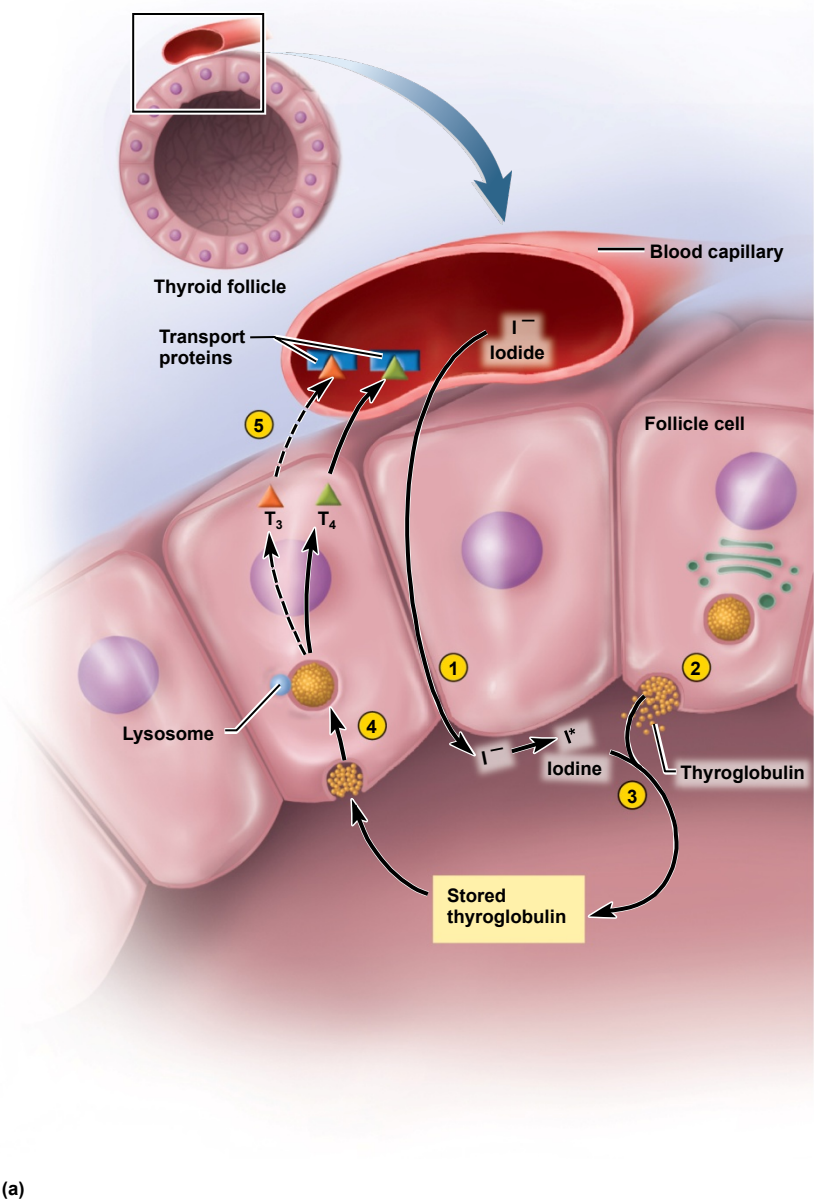


Fig. 17.18

Copyright © McGraw-Hill Education. Permission required for reproduction or display.

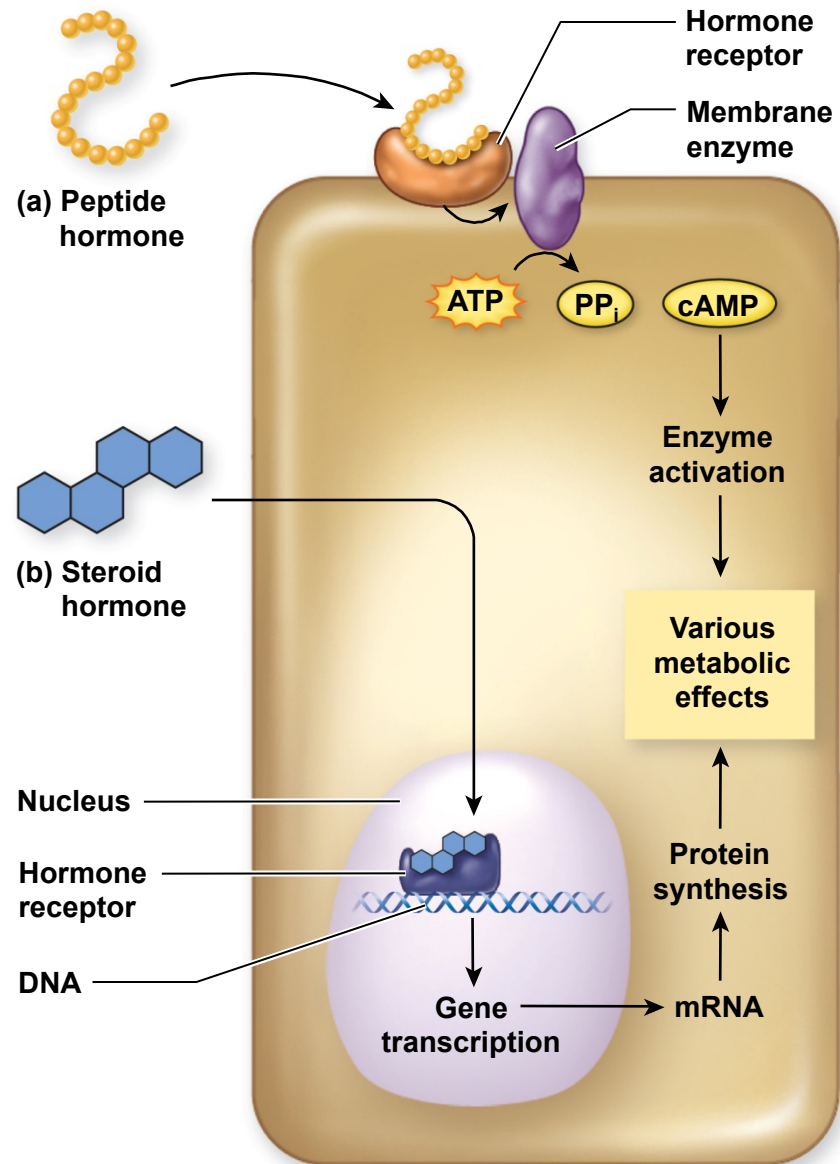


Fig. 17.19

Copyright © McGraw-Hill Education. Permission required for reproduction or display.

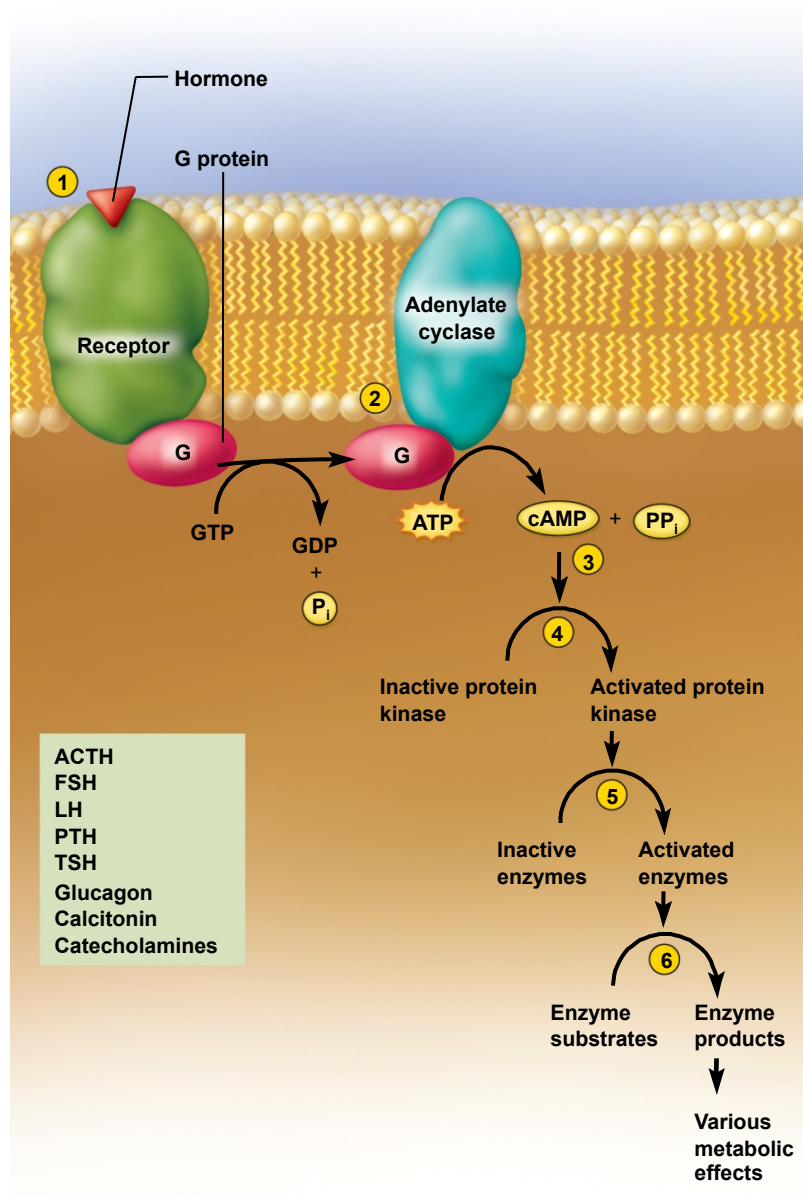


Fig. 17.20

Copyright © McGraw-Hill Education. Permission required for reproduction or display.

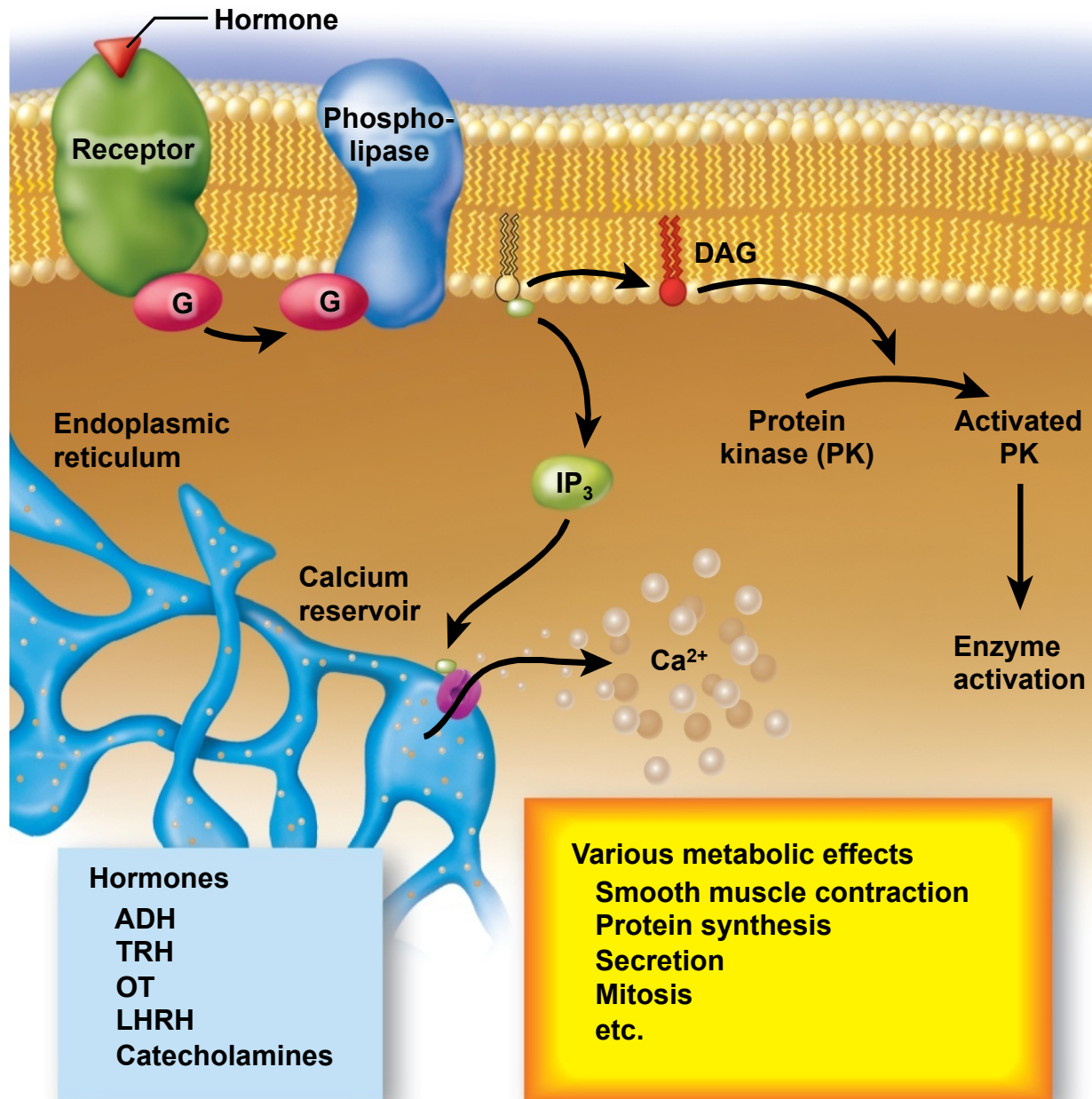


Fig. 17.21

Copyright © McGraw-Hill Education. Permission required for reproduction or display.

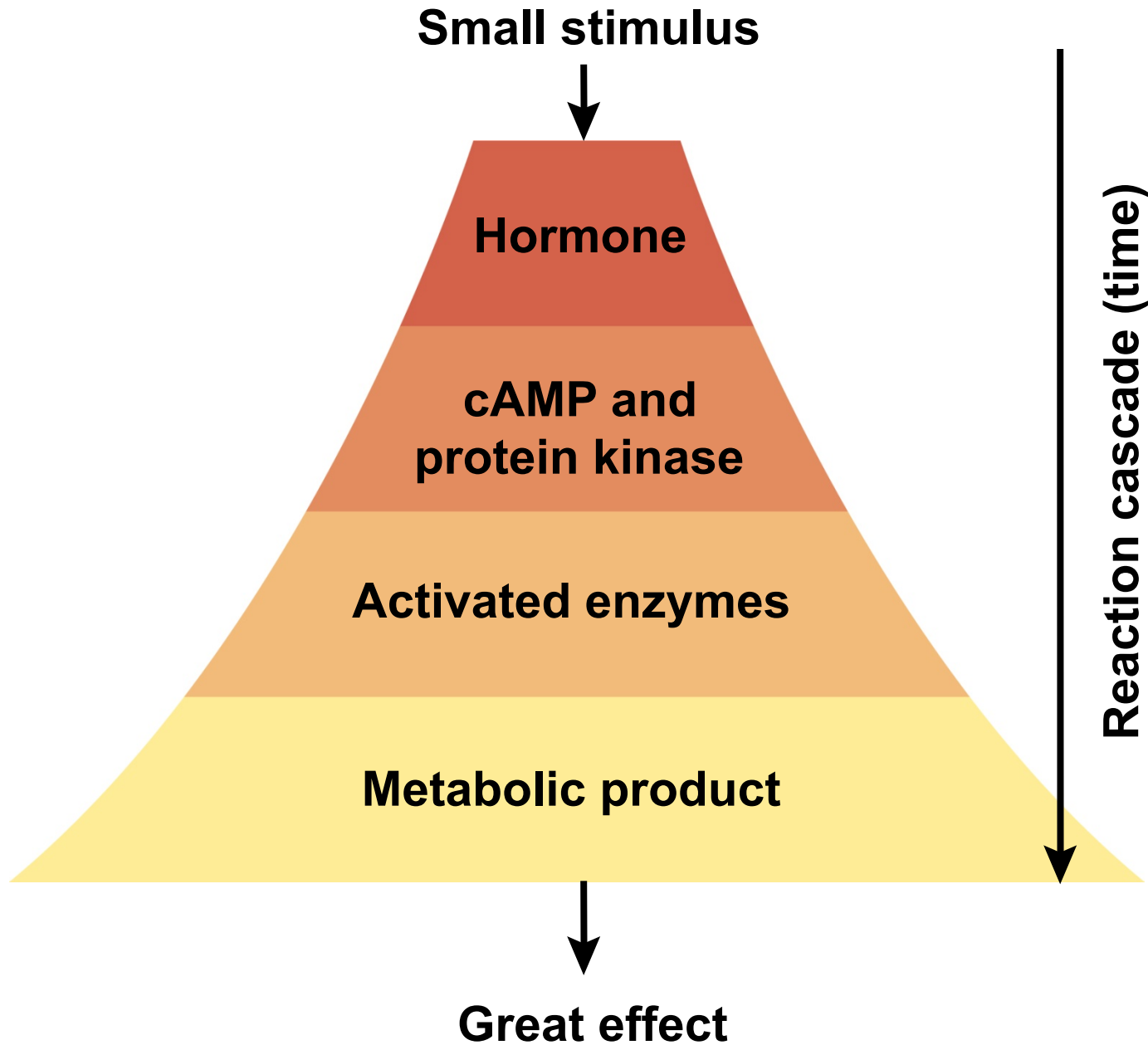
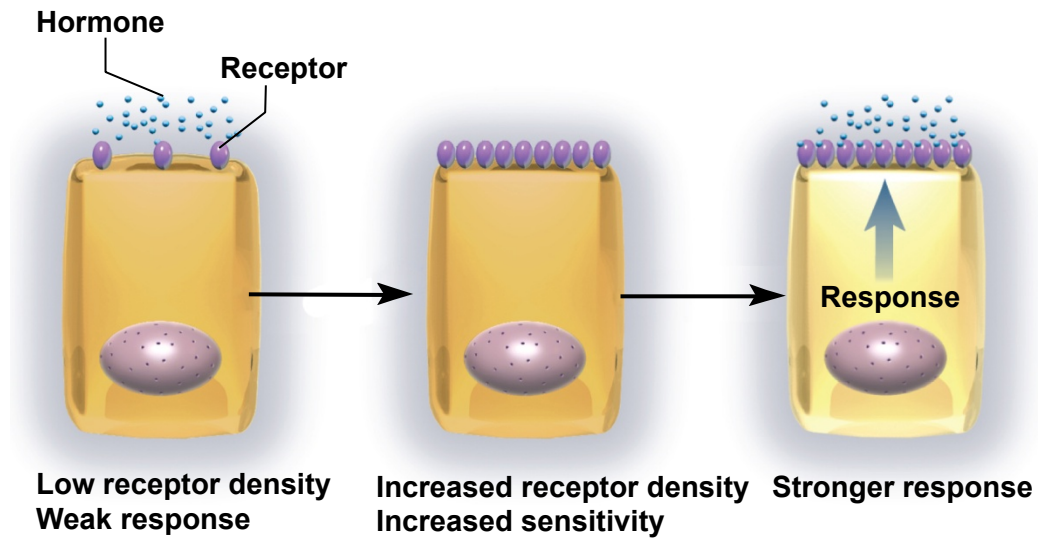
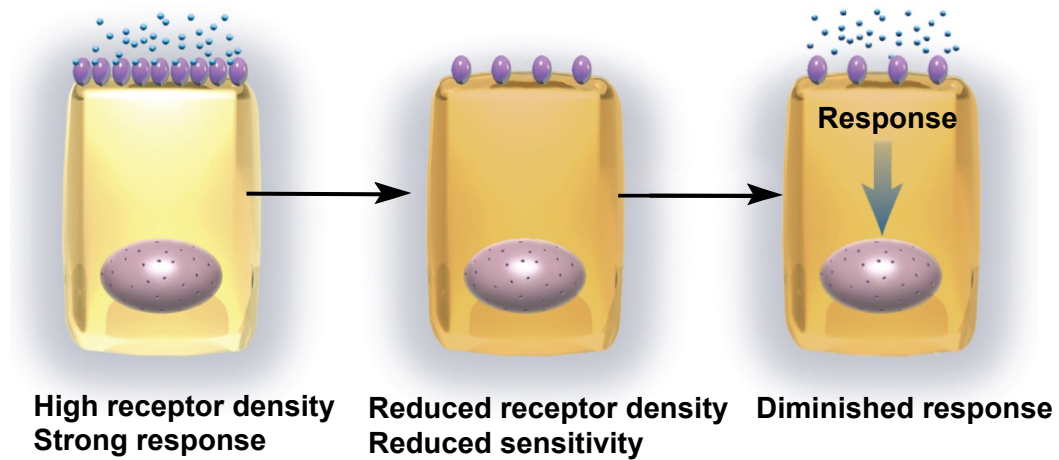


Fig. 17.22

Copyright © McGraw-Hill Education. Permission required for reproduction or display.



(a) Up-regulation



(b) Down-regulation

Fig. 17.23

Copyright © McGraw-Hill Education. Permission required for reproduction or display.

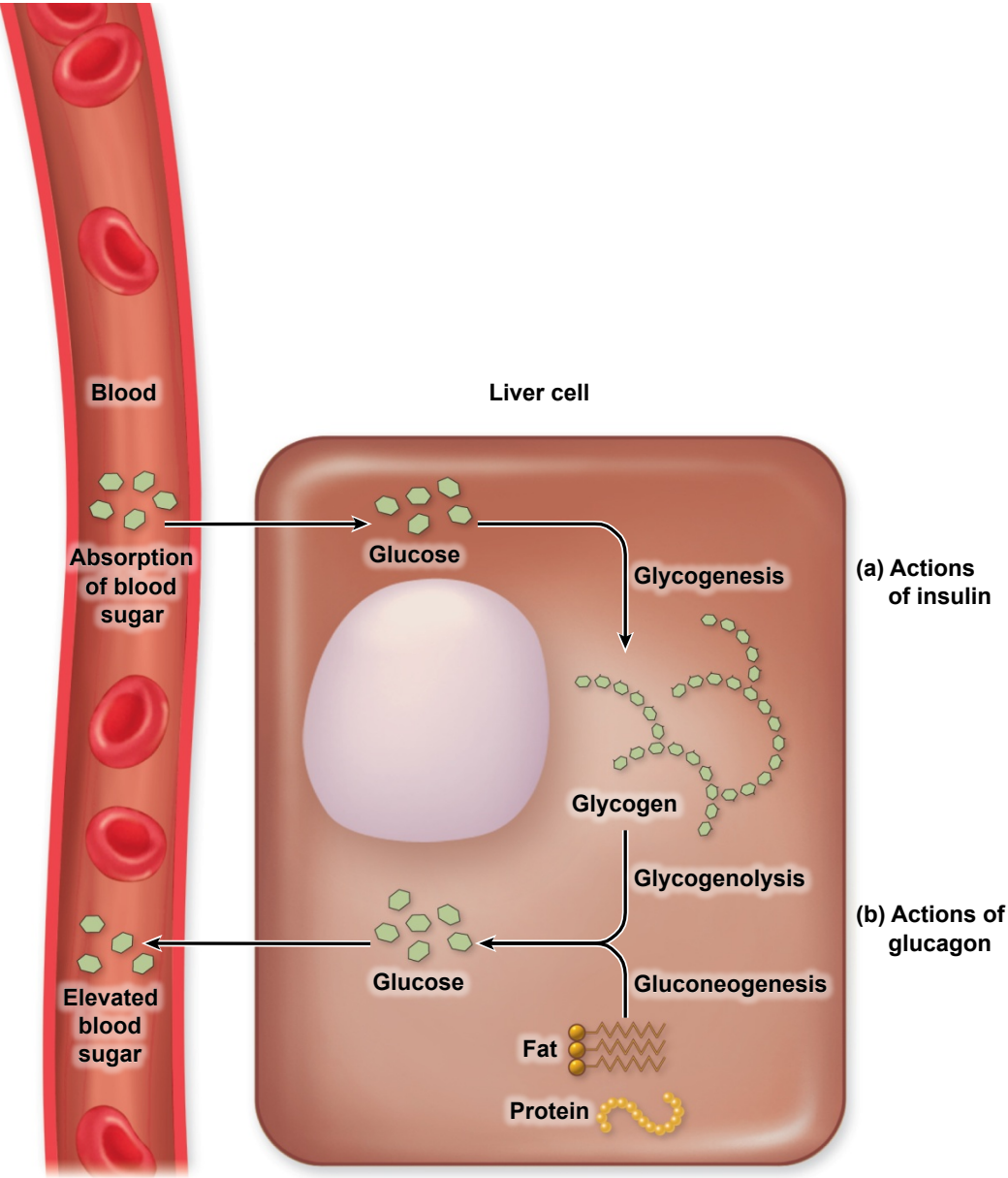


Fig. 17.24

Copyright © McGraw-Hill Education. Permission required for reproduction or display.

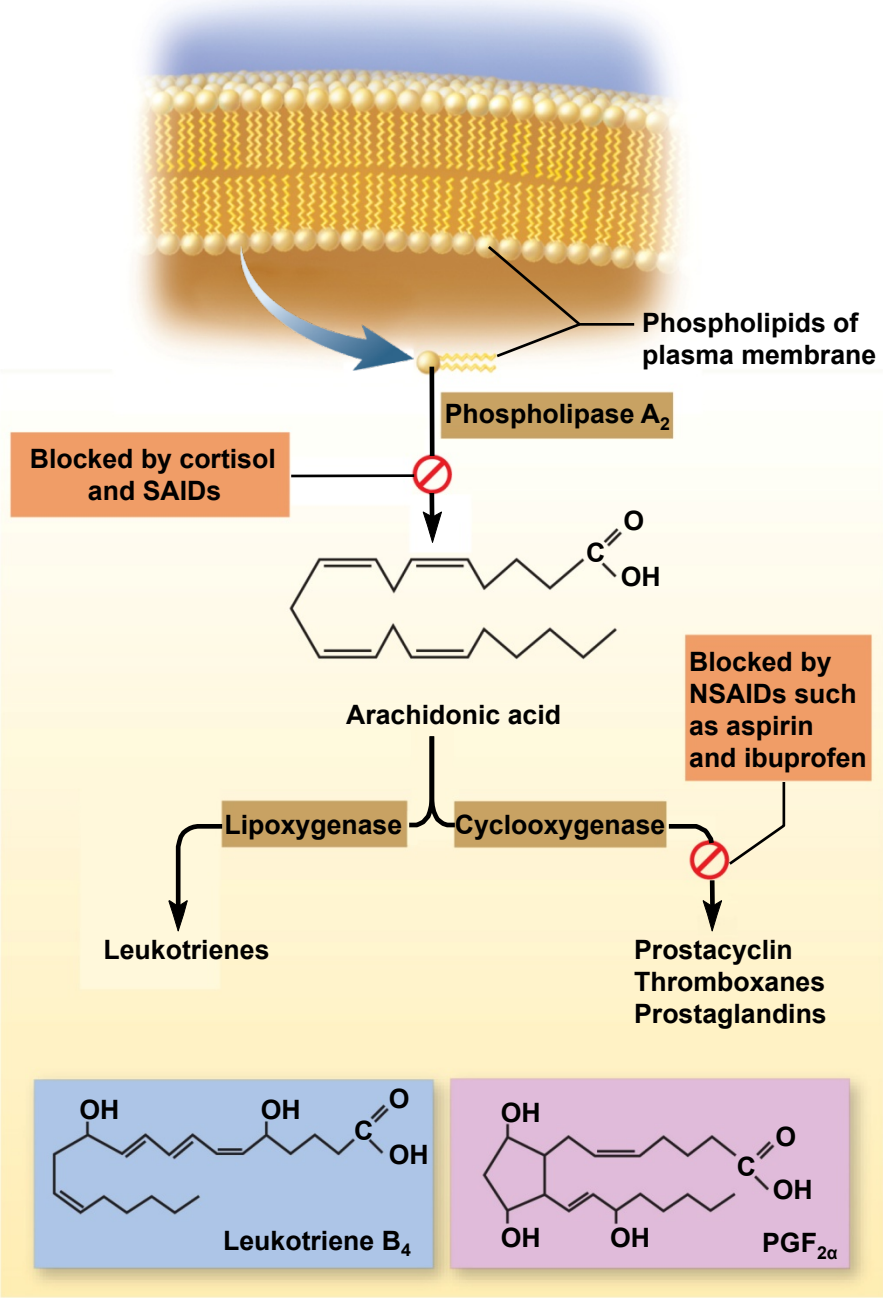


Table 17.7

Copyright © McGraw-Hill Education. Permission required for reproduction or display.

TABLE 17.7	Some of the Roles of Prostaglandins
	<i>Inflammatory:</i> Promote fever and pain, two cardinal signs of inflammation
	<i>Endocrine:</i> Mimic effects of TSH, ACTH, and other hormones; alter sensitivity of anterior pituitary to hypothalamic hormones; work with glucagon, catecholamines, and other hormones in regulation of fat mobilization
	<i>Nervous:</i> Function as neuromodulators, altering the release or effects of neurotransmitters in the brain
	<i>Reproductive:</i> Promote ovulation and formation of corpus luteum; induce labor contractions
	<i>Gastrointestinal:</i> Inhibit gastric secretion
	<i>Vascular:</i> Act as vasodilators and vasoconstrictors
	<i>Respiratory:</i> Constrict or dilate bronchioles
	<i>Renal:</i> Promote blood circulation through the kidney, increase water and electrolyte excretion

