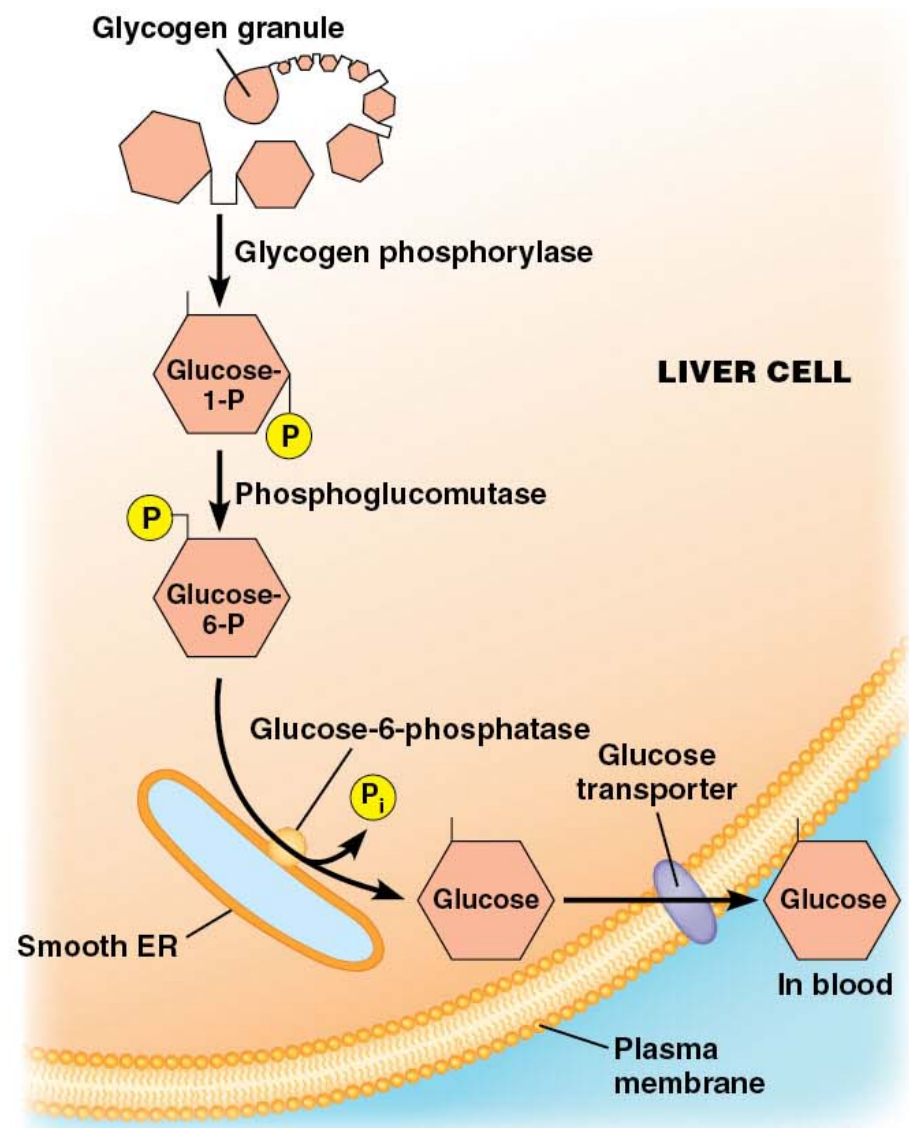


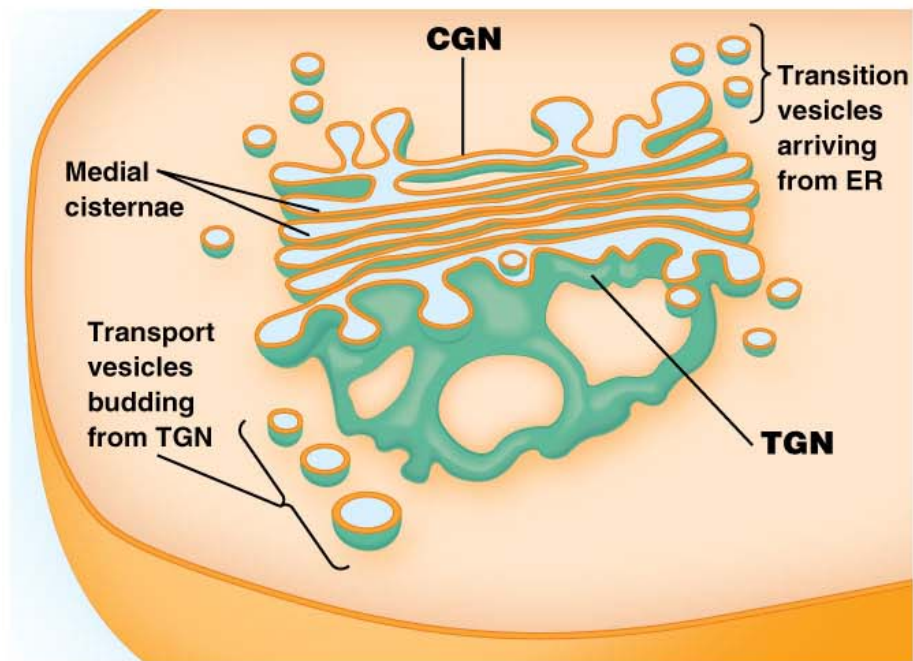
**(a)** Proximity of glycogen to smooth ER

0.5 μm

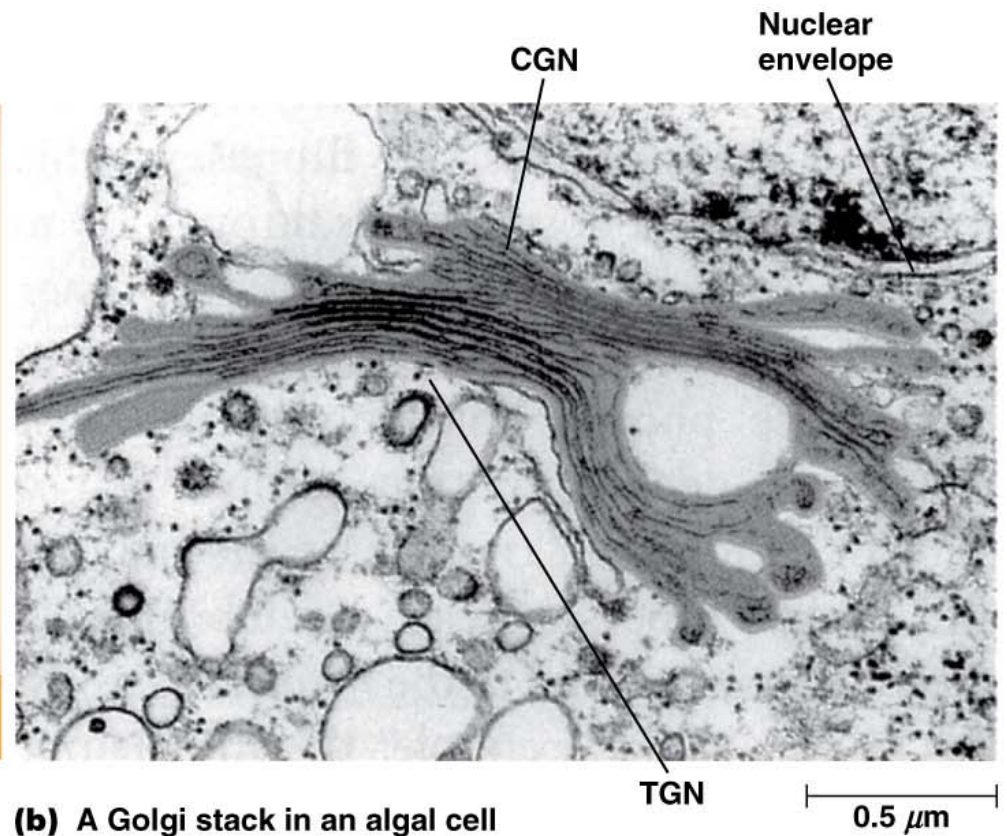


**(b)** Process of glycogen breakdown in liver

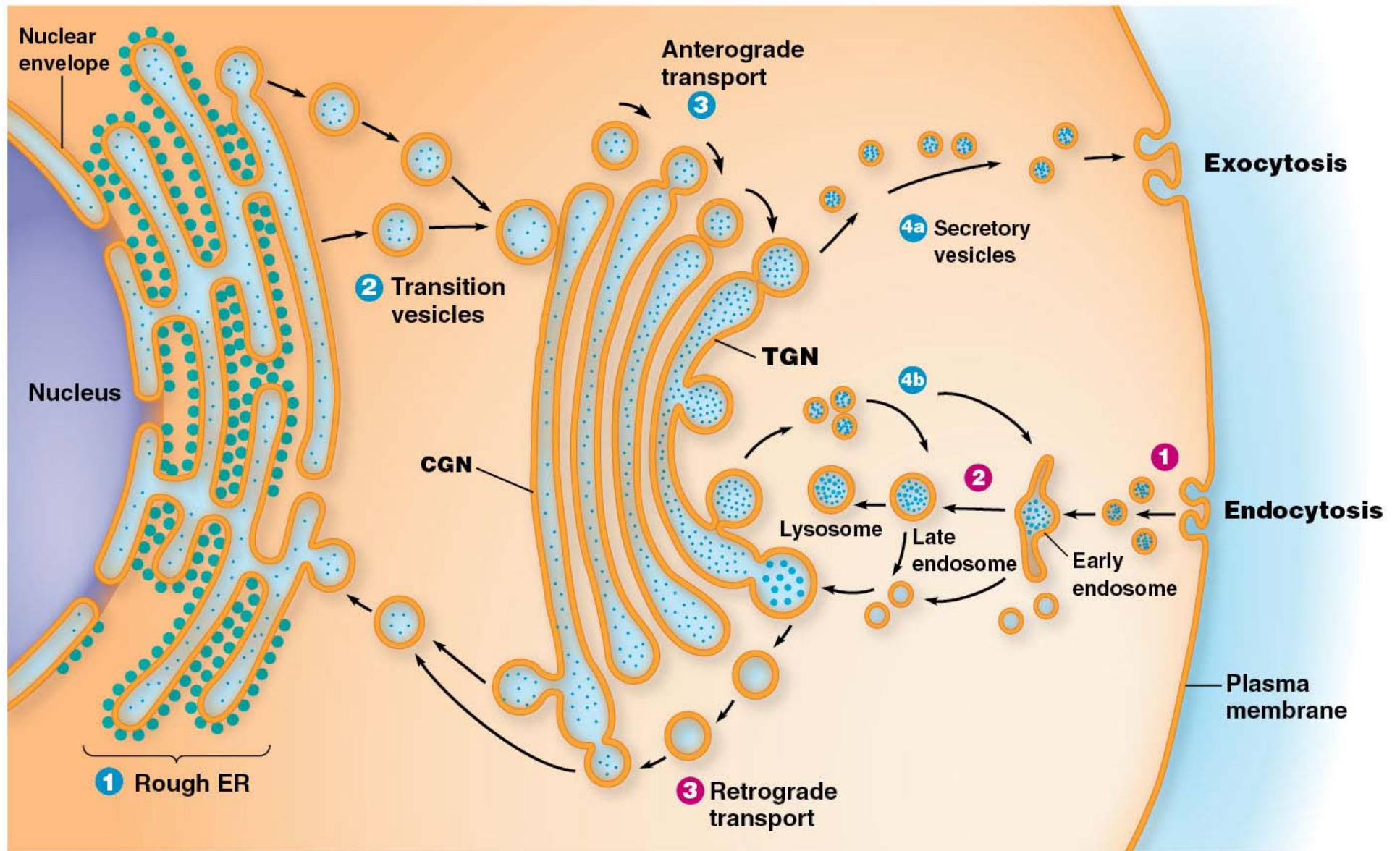


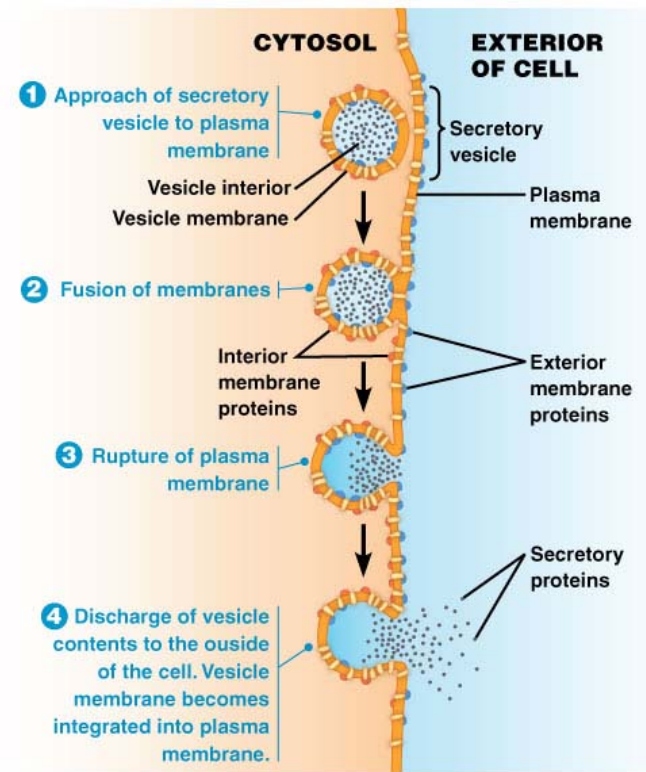


**(a)** A Golgi stack in an animal cell

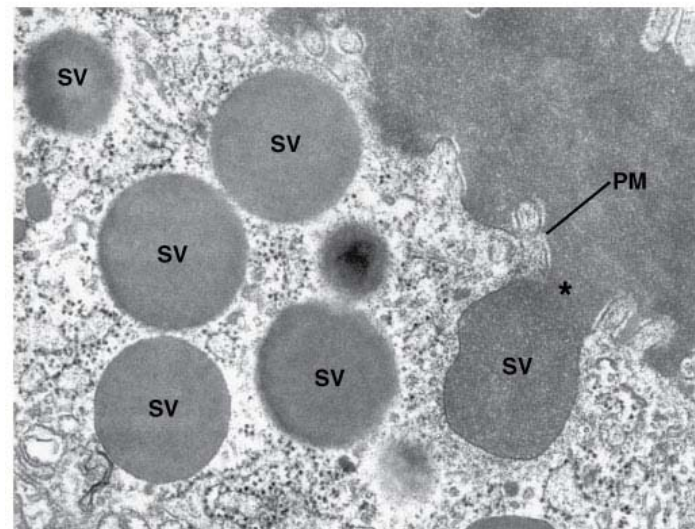


**(b)** A Golgi stack in an algal cell





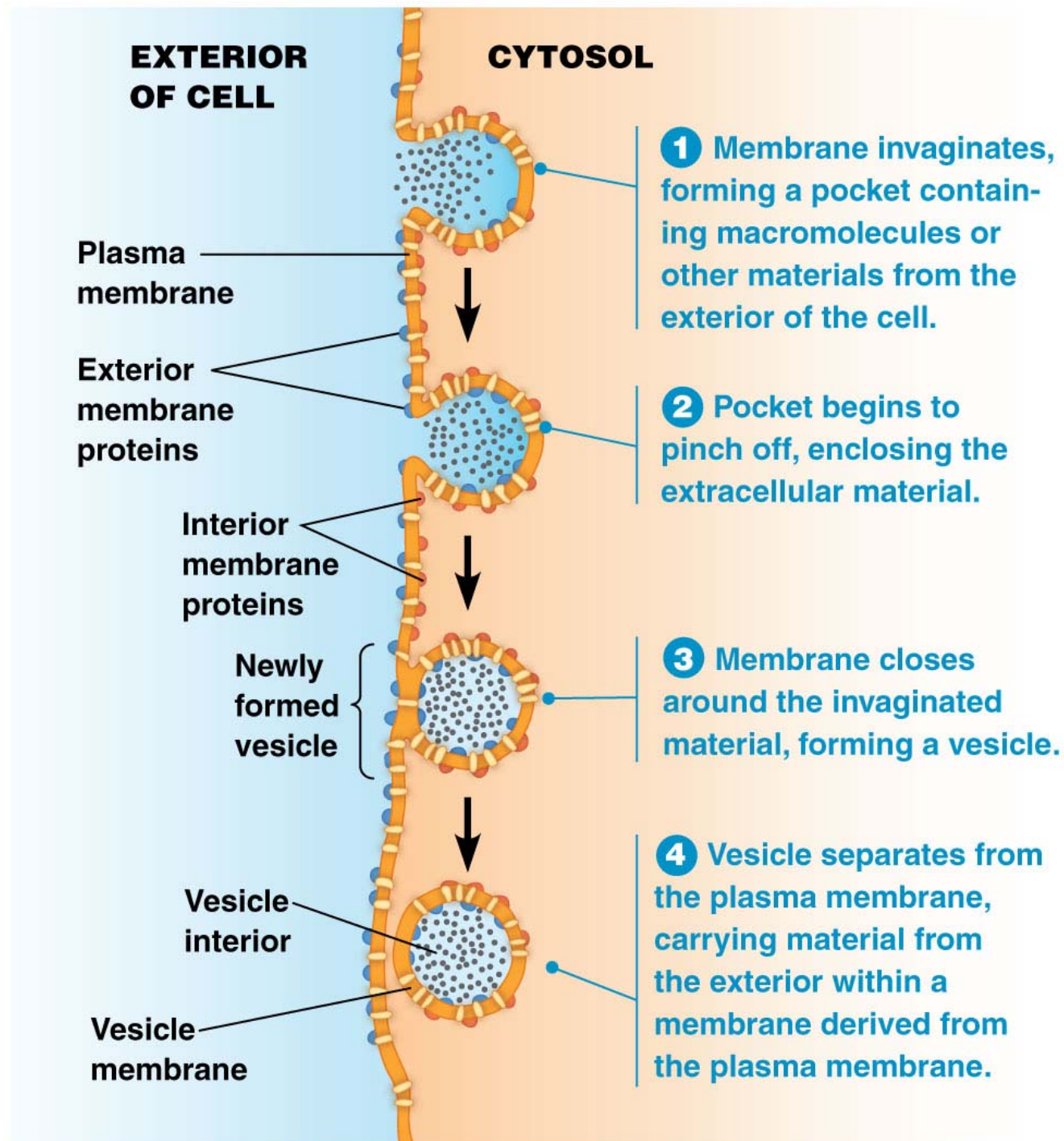
**(a)**

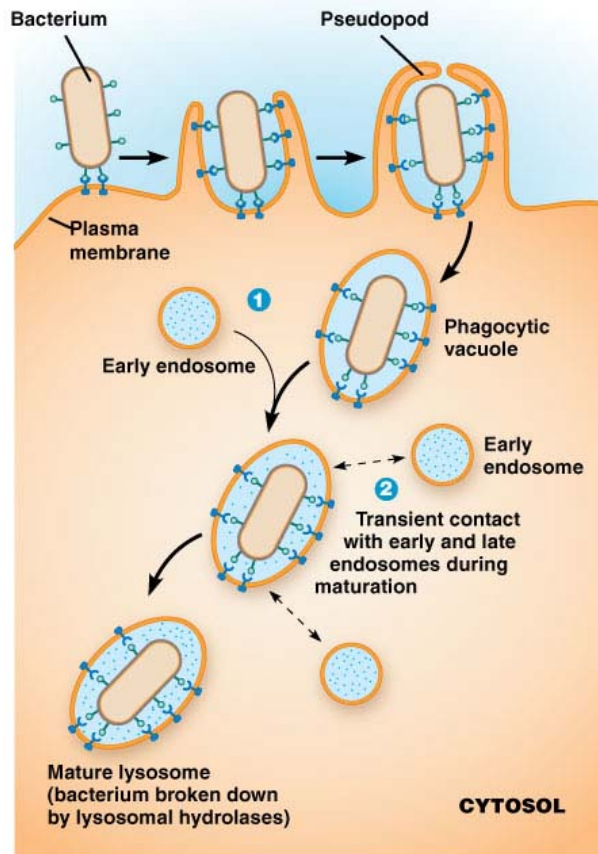


**(b)**

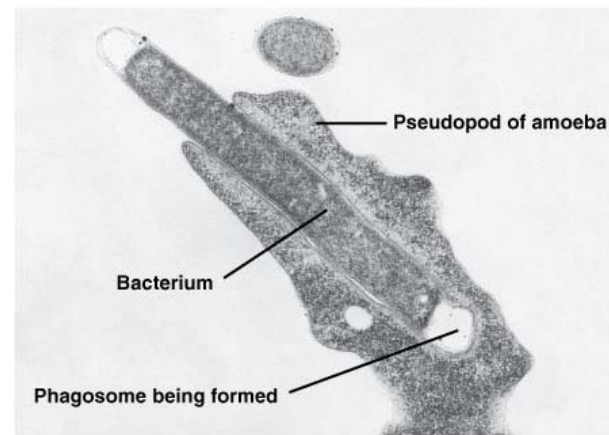
0.5  $\mu\text{m}$





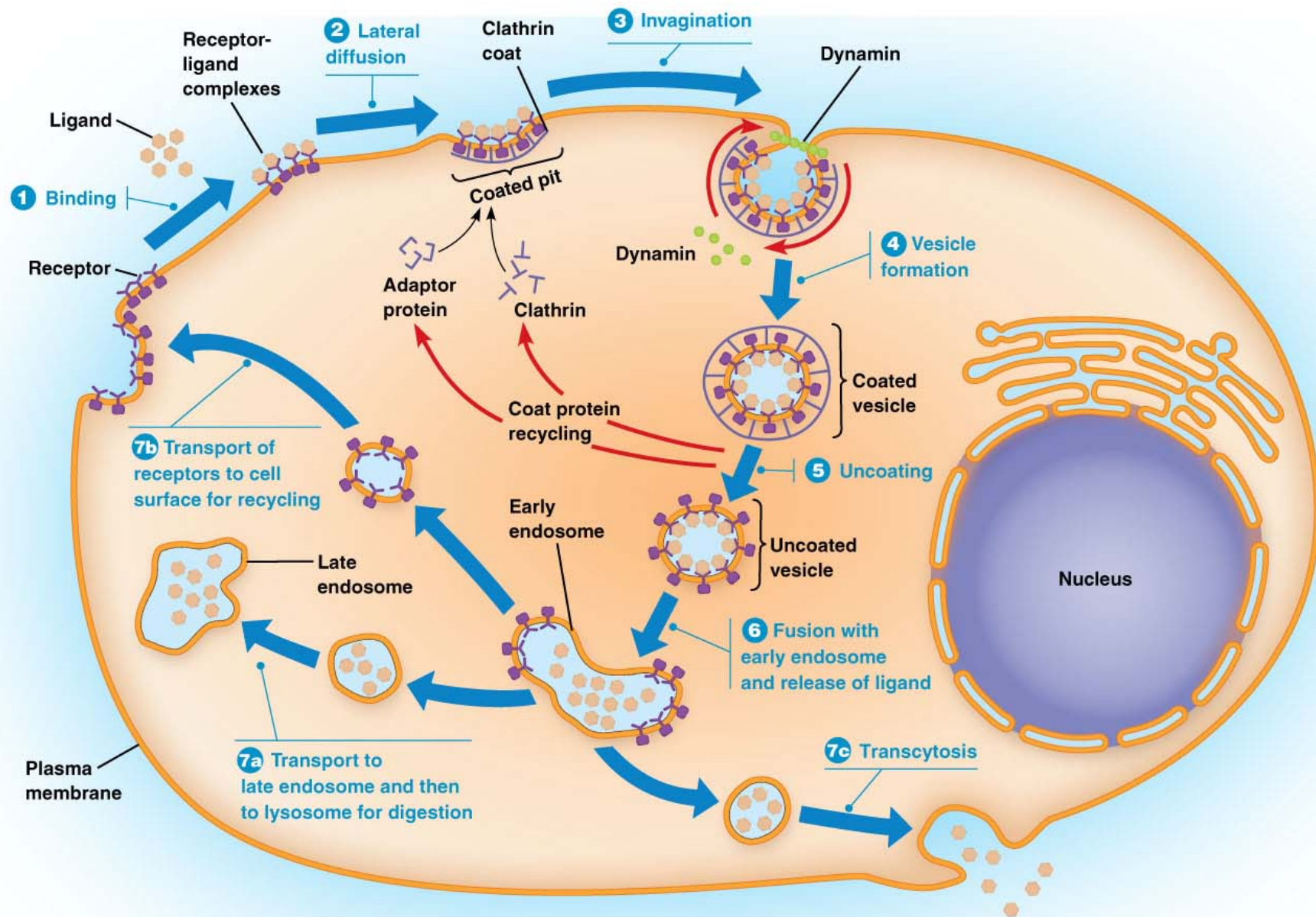


(a)

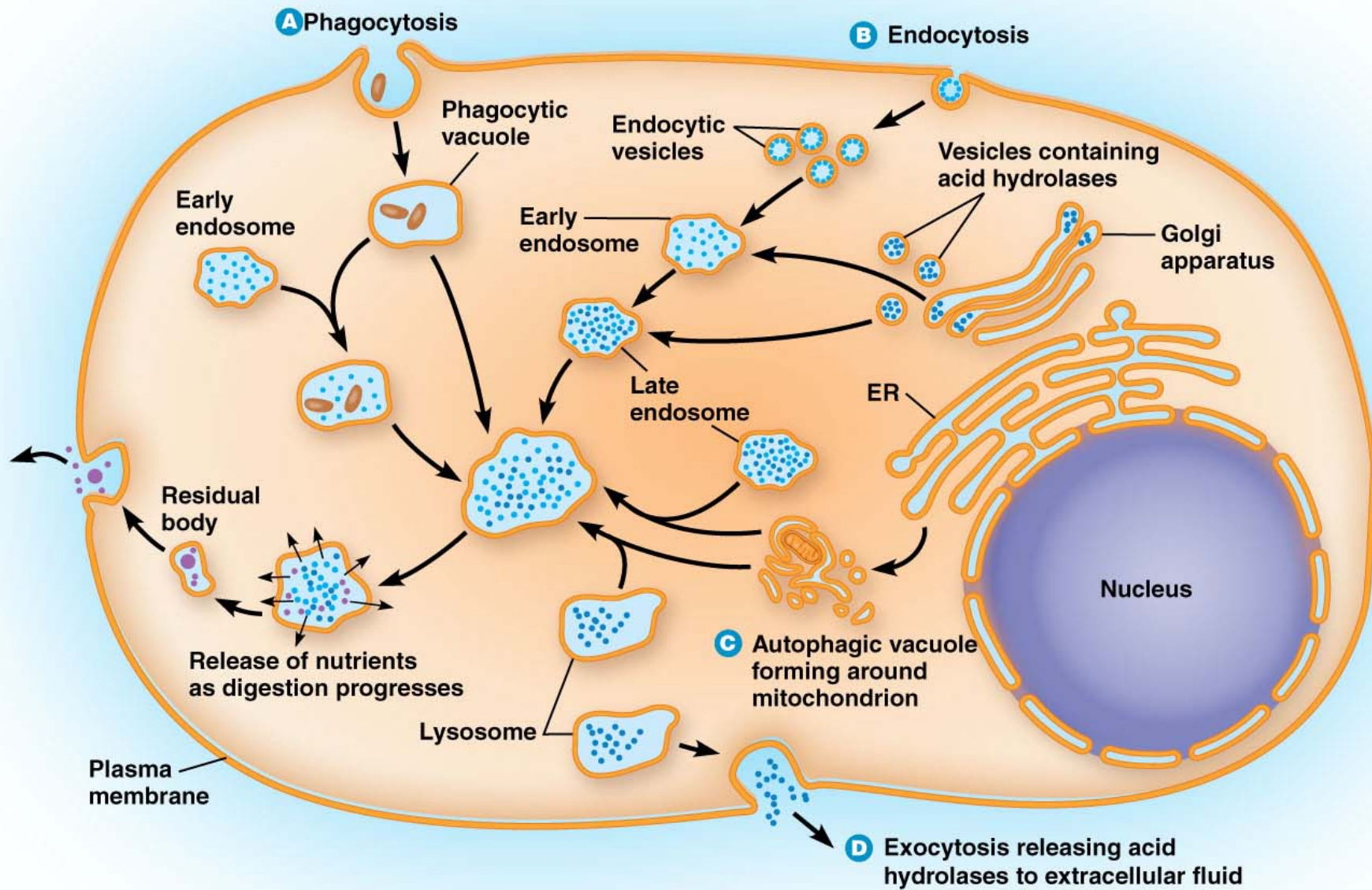


(b)

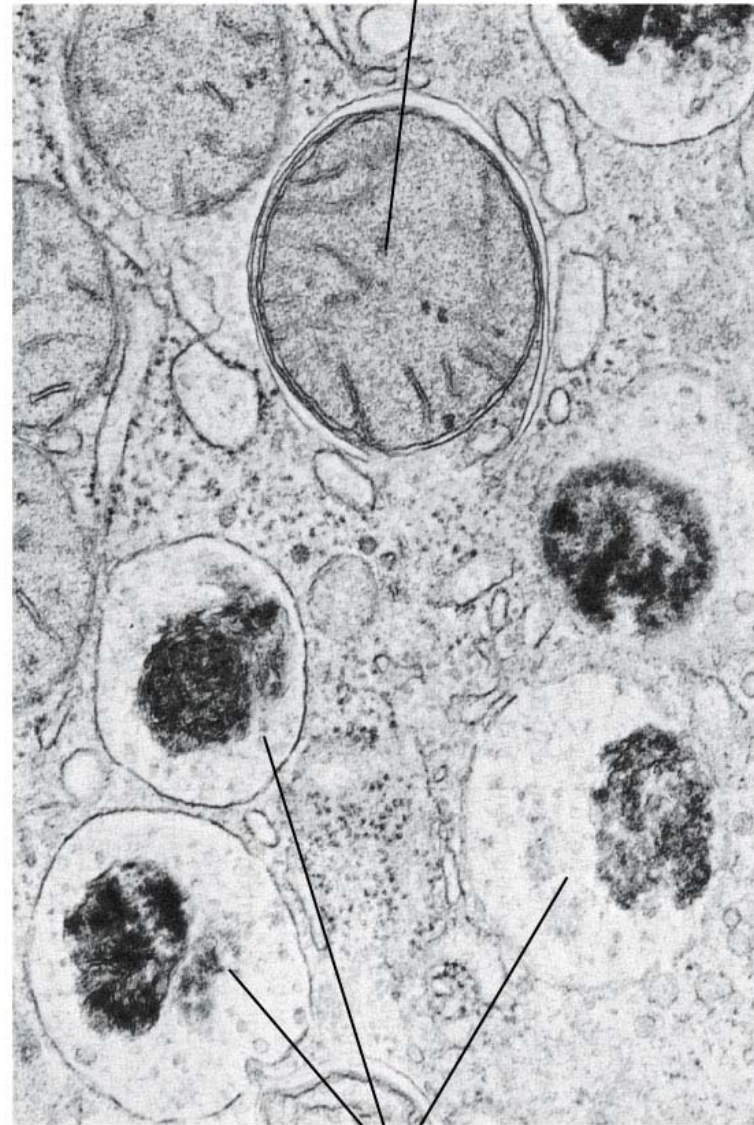
1  $\mu\text{m}$







Mitochondrion  
being sequestered  
by membrane  
of the smooth ER



Autophagic  
vacuoles with  
remnants of  
mitochondria

500 nm



